

103 Jacket

Burda sizes 34, 36, 38, 40, 42

Back length about 58 cm (23 ins)

Materials

Imitation astrakhan,
width: 140 cm (55 in)
length: 1.35 – 1.35 – 1.4–1.40–1.40m (1 5/8 yds).

Lining,
width: 140 cm (55 in)
length: 1.15 – 1.20 – 1.20 – 1.25 – 1.25 m
(1 3/8 – 1 3/8 – 1 3/8 – 1 1/2 – 1 1/2 yds).

Interfacing.

1 separating metal zip, 50 – 55 – 55 – 55 – 55 cm
(20 – 22 – 22 – 22 – 22 ins) long.

Recommended fabrics: Softly draping fake fur with short pile.

Preparations

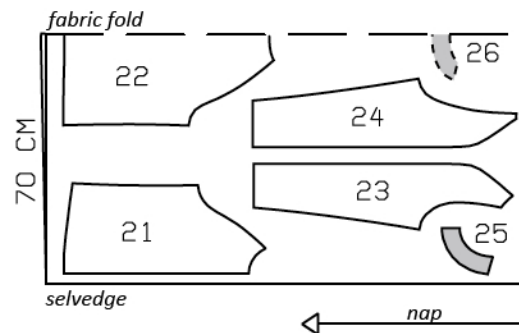
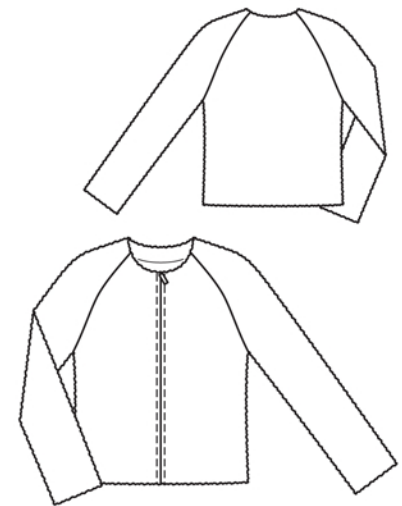
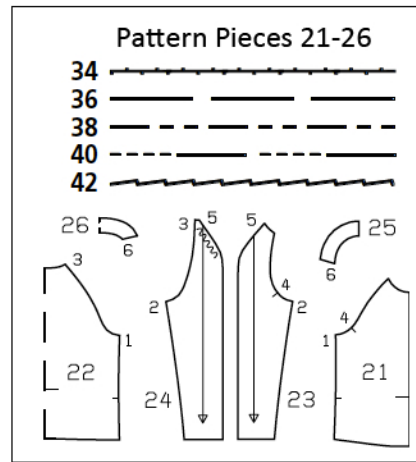
Print the pattern out on letter or A4 sized paper. It is very important to not scale the document. Your pattern will print on multiple pages, which you will then tile together. Arrange the sheets on a large, hard and flat surface matching up the numbers and letters (i.e. 6A to 6A). Cut or fold one of the sides and match the edge to its corresponding side. Then, tape down in place so paper is secure.

Trace the pattern pieces from the pattern sheet following the lines and markings for style 103 and your size. To cut the lining, mark a line for the lining on pieces 21 to 24, 5 cm (2 ins) from neck edge.

burda style magazine patterns do not have seam allowance included.

Seam and hem allowance to be added:

Seams and edges 1.5 cm (5/8 in), hem and sleeve hems 4 cm (1 5/8 ins), lining 1.5 cm (5/8 in).



Cut from a double layer of fabric, right side facing in. Note direction of nap on fake fur.

Cutting Out

Astrakhan:

- 21 front 2x
- 22 back, on a fold 1x
- 23 front sleeve 2x
- 24 back sleeve 2x
- 25 front neck facing 2x
- 26 back neck facing, on a fold 1x

Lining: pieces 21, 23 and 24 to lining line; piece 22 to lining line and with an ease pleat of about 2 cm (3/4 in) at centre back.

Interfacing: See pattern layout. Interface allowances on front edges of front pieces. Also interface hem allowances.

Sewing

Stitch side seams and underneath sleeve seams. Press seam allowances open.

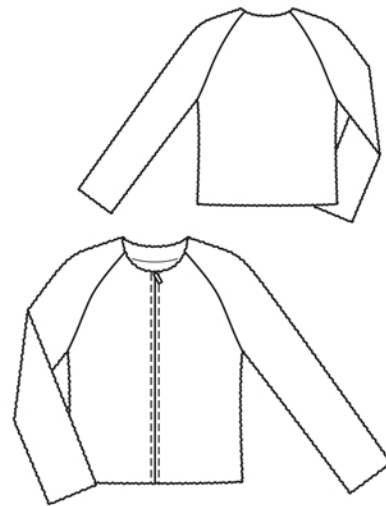
Stitch sleeves to armhole edges. Press seam allowances open, from neck edge to beginning of underarm curve.

Stitch top sleeve seams (seam number 5). Press sleeve hem allowances to inside and sew in place by hand.

Shorten upper end of zip for sizes 36 – 42: For the zip, measure length of front edge from neck edge to hem line. Mark this length on zip. Use pliers to remove top stoppers and surplus teeth from zip. If your zip is of metal, reattach stoppers and press firmly to secure. If your zip is of plastic, sew heavy thread bars across the top to prevent the slider from slipping off. Trim away zip tapes 2 cm (3/4 in) above teeth.

Separate zip halves. Lay zip face down on seam allowances of front edges of jacket front (right side of fabric), matching zip teeth to marked front edge. Stitch zip tapes to seam allowances.

Line jacket and hem: Stitch ease pleat in back lining piece, about 5 cm (2 ins) long at both top and bottom, and baste in between. Press pleat to one side. Stitch seams of lining. Stitch sleeve linings to armhole edges. Stitch shoulder seams of neck facing. Trim away allowances on front edges of front lining pieces and on neck facing. Stitch neck facing to lining. Press seam allowances onto lining. Lay front edges of lining and facing right sides together with seam allowances on front jacket edges, over zip, so that edges lie exactly together. Stitch edges together, 7 mm (1/4 in) from edge. Press lining and facing forward over joining seam and stitch to seam allowances, close to seam. Lay seam allowances of front edges on jacket, together with facing and lining, right sides together. Pin facing to neck edge. Stitch along neck edge. Trim seam allowances, trimming corners diagonally. Turn facing and lining to inside and press edges. Pull sleeve linings inside jacket sleeves. At hem edge, lay allowances at front edges and lining forward again. Press hem allowance to inside and sew in place by hand. Turn allowances and



lining to inside again. Turn in lining along hem edge and press fold lightly. Push upward in a shallow curve and pin to hem allowance. Sew lining in place. Lay extra length of lining down and press lightly. Pin a fold, about 1 cm (3/8 in) deep, in lining, above each sleeve hem. Turn in sleeve lining and sew to hem. Lay extra length down and press.

Topstitch 7 mm (1/4 in) from front edges of jacket.

Additional Information:

Burda patterns do not include seam and hem allowances. We recommend adding 1-2 cm (3/8 - 3/4 inch) for seams and 2-5 cm (3/4 - 2 inch/es) for hems. Refer to your specific pattern instructions for exact measurements.

The fabric requirements are based on the fabric used for the original designs. These amounts will change if you use fabric of a different width. The pattern of the fabric determines whether all the pieces must be cut in the same direction or whether some can be reversed to save fabric.

The cutting layout printed with the instructions shows the best way to place the pattern pieces on our original fabric. Fold the fabric double with the right side facing in. The fabric then has a fold edge and a selvedge edge. When cutting from a single fabric layer, the right side should face up.

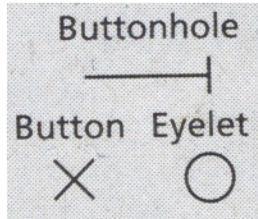
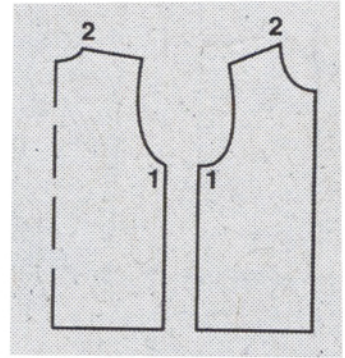
Pattern pieces which are shown in the cutting layout with broken outlines should be pinned to the fabric with their printed side facing down.

Grey shaded areas in the cutting layout indicate which pieces are to be interfaced.

Transfer the pattern piece lines to the wrong side of your fabric with burda dressmaker's carbon paper. Hand-baste along lines (e.g. for pockets or centre front) to make them visible on the right side of the fabric.

Key Symbols:

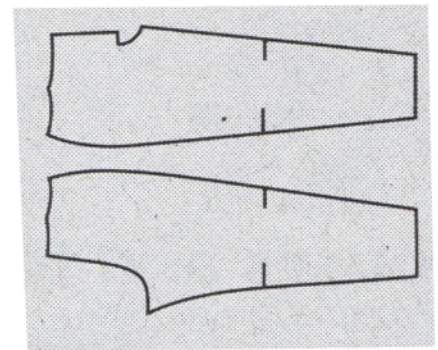
Seam numbers
show where pattern pieces must be sewn together. Match pieces with the same numbers.



Seam marks
on long seams. Match the small symbols to one another.



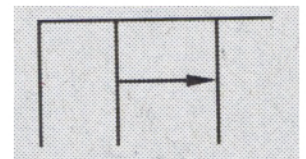
Presser foot
is the symbol for seam and top-stitching lines.



Scissors
indicate edges to be cut without seam allowances and also slash lines, e.g. pocket openings.



Pleat symbol
Fold pleat in direction of arrow.



Placket/slit mark
Indicates beginning/end of placket/slit.

