

### 106 Dress

Burda sizes 17, 18, 19, 20, 21

Length from waist 53 cm (21 ins)

### Materials

Crêpe satin, with crosswise stretch,  
width: 140 cm (55 in)  
length: 1.80 m (2 yds) for all sizes.

Interfacing.

1 invisible zip, 60 cm (24 ins) long.

Recommended fabrics: Lightweight dress fabrics.  
Fabrics with elastane are ideal.

### Preparations

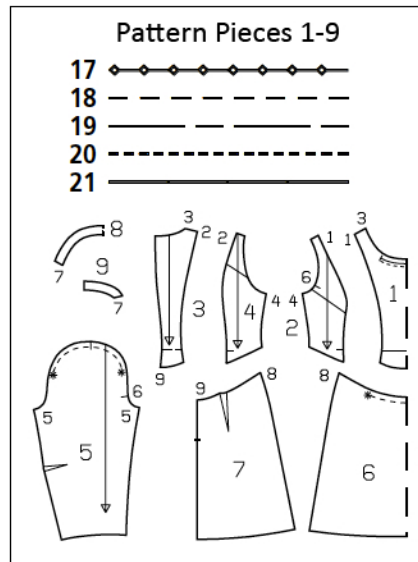
Print the pattern out on letter or A4 sized paper.  
It is **very** important to not scale the document.  
Your pattern will print on multiple pages, which  
you will then tile together. Arrange the sheets on  
a large, hard and flat surface matching up the  
numbers and letters (i.e. 6A to 6A). Cut or fold  
one of the sides and match the edge to it's corre-  
sponding side. Then, tape down in place so paper  
is secure.

Trace the pattern pieces from the pattern sheet  
following the lines and markings for style 106 and  
your size. Cut pieces 1, 2, and 4 apart on the  
marked seam lines.

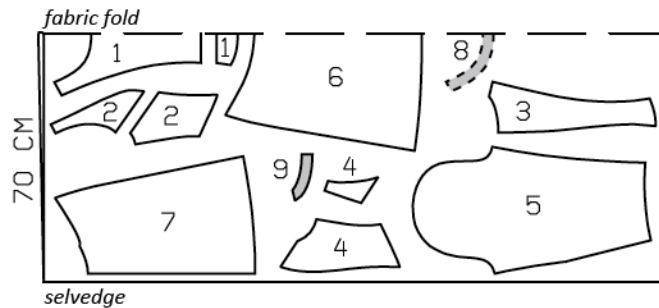
The gathering line on upper front edge is marked  
in full for size 17 only. For the other sizes, com-  
plete this line accordingly.

**burda style magazine patterns do not have seam  
allowance included.**

Seam and hem allowance to be added:  
Seams and edges 1.5 cm (5/8 in), hem and sleeve  
hems 4 cm (1 5/8 ins) – flare sleeve hem allow-  
ances.



Cut from a double layer of fabric, right  
side facing in.



### Cutting Out

- 1 centre front, on a fold, cut apart, each 1x
- 2 side front, cut apart, each 2x
- 3 centre back 2x
- 4 side back, cut apart, each 2x
- 5 sleeve 2x
- 6 front skirt panel, on a fold 1x
- 7 back skirt panel 2x
- 8 front facing, on a fold 1x
- 9 back facing 2x

Interfacing: Iron to facing pieces.

## Sewing

Stitch horizontal section seam on centre front. Stitch slanted section seams on side front and back units. Press seam allowances up. Stitch vertical front and back section seams (seam numbers 1 and 2). Press seam allowances onto centre pieces.

Stitch side seams and shoulder seams of dress bodice. Stitch darts in back skirt panels. Stitch side seams of skirt. Gather upper edge of skirt front, between asterisks. Stitch skirt to dress bodice. Press seam allowances up.

Sew invisible zip to back slit edges, see the "Helpful Hint" on next page. Stitch centre back seam from lower edge to zip.

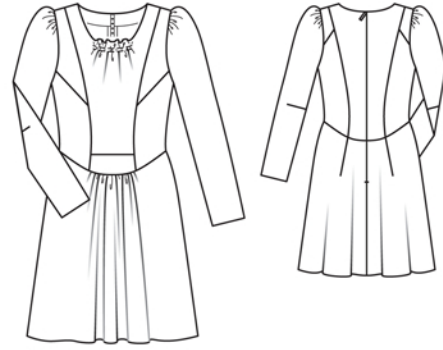
Face neck edge: Stitch shoulder seams of neck facing. Pin facing right sides together with neck edge of dress. At zip slit, turn facing back, about 5 mm (3/16 in) before edges of slit, and pin to upper edge. Lay allowances on slit edges of dress to outside and pin to neck edge, over facing. Stitch along neck edge. Turn allowances on slit edges to inside. Lay facing up and stitch to seam allowances, as far as possible, close to seam. Turn facing to inside and sew to zip tapes. Sew inside edge of facing to shoulder seams.

Machine baste (longest stitch setting) front neck edge 4 mm (a generous 1/8 in) above and below marked gathering line. Gather fabric along machine basting to 11.8 – 12 – 12.2 – 12.4 – 12.6 cm (4 5/8 – 4 3/4 – 4 13/16 – 5 7/8 – 5 ins) wide. Pull ends of thread to inside and knot.

Press hem allowance to inside and sew in place by hand.

Stitch darts in sleeves. Press darts up. Stitch sleeve seams. Press sleeve hem allowances to inside and sew in place by hand.

Set in sleeves, gathering sleeve caps.



## Additional Information:

**Burda patterns do not include seam and hem allowances.** We recommend adding 1-2 cm (3/8 - 3/4 inch) for seams and 2-5 cm (3/4 - 2 inch/es) for hems. Refer to your specific pattern instructions for exact measurements.

The fabric requirements are based on the fabric used for the original designs. These amounts will change if you use fabric of a different width. The pattern of the fabric determines whether all the pieces must be cut in the same direction or whether some can be reversed to save fabric.

The cutting layout printed with the instructions shows the best way to place the pattern pieces on our original fabric. Fold the fabric double with the right side facing in. The fabric then has a fold edge and a selvedge edge. When cutting from a single fabric layer, the right side should face up.

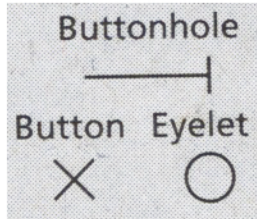
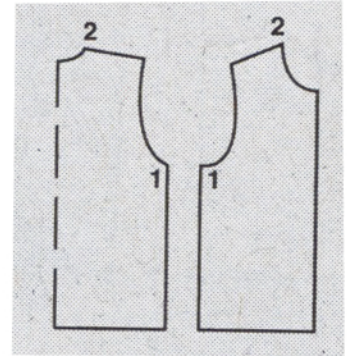
Pattern pieces which are shown in the cutting layout with broken outlines should be pinned to the fabric with their printed side facing down.

Grey shaded areas in the cutting layout indicate which pieces are to be interfaced.

Transfer the pattern piece lines to the wrong side of your fabric with burda dressmaker's carbon paper. Hand-baste along lines (e.g. for pockets or centre front) to make them visible on the right side of the fabric.

## Key Symbols:

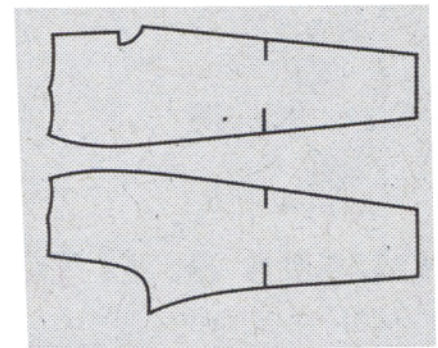
**Seam numbers**  
show where pattern pieces must be sewn together. Match pieces with the same numbers.



**Seam marks**  
on long seams. Match the small symbols to one another.



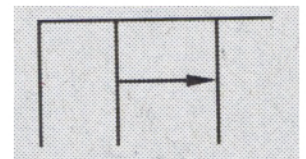
**Presser foot**  
is the symbol for seam and top-stitching lines.



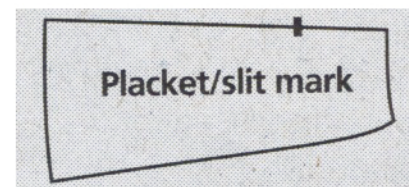
**Scissors**  
indicate edges to be cut without seam allowances and also slash lines, e.g. pocket openings.



**Pleat symbol**  
Fold pleat in direction of arrow.



**Placket/slit mark**  
Indicates beginning/end of placket/slit.



**Gather**  
**Ease**  
**Stretch**

