

107 Jacket

Burda sizes 36, 38, 40, 42, 44

Back length about 83 cm (33 ins)

Sleeves are about 10 cm (4 ins) longer than normal

Materials

Fine knit fabric with two-way stretch, width: 150 cm (59 in)

length: 1.65 – 1.70 – 1.70 – 1.85 – 1.85 m
(1 7/8 – 1 7/8 – 1 7/8 – 2 1/8 – 2 1/8 yds).

Vilene Bias Tape/stay tape.

9 large sew-on snap fasteners.

Recommended fabrics: Fine knit fabrics or jersey. Use only fabrics with two-way stretch.

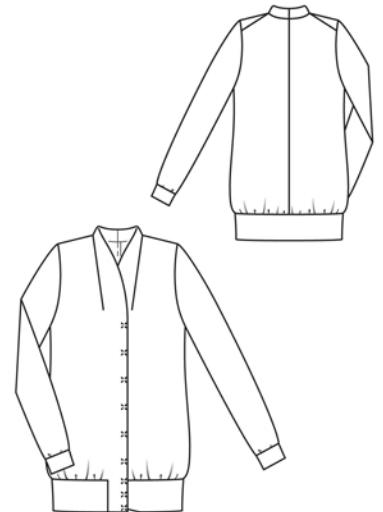
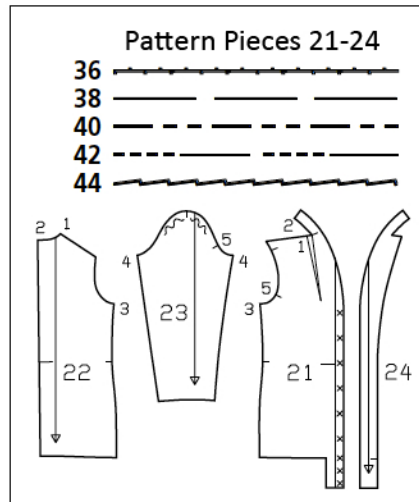
Preparations

Print the pattern out on letter or A4 sized paper. It is **very important** to not scale the document. Your pattern will print on multiple pages, which you will then tile together. Arrange the sheets on a large, hard and flat surface matching up the numbers and letters (i.e. 6A to 6A). Cut or fold one of the sides and match the edge to it's corresponding side. Then, tape down in place so paper is secure.

Trace the pattern pieces from the pattern sheet following the lines and markings for style 107 and your size.

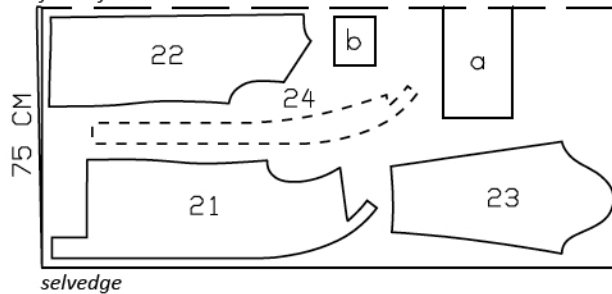
burda style magazine patterns do not have seam allowance included.

Seam and hem allowance to be added:
Seams and edges 1.5 cm (5/8 in).



Sizes 36-40

fabric fold

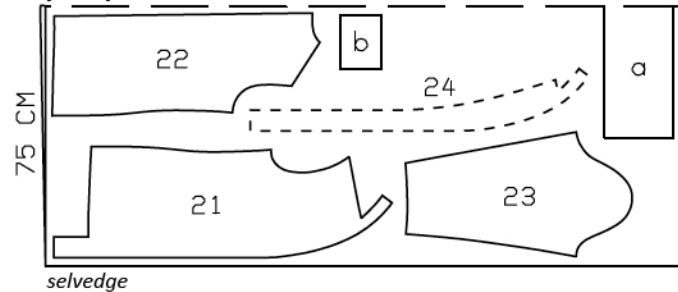


selvedge

Sizes 42, 44

fabric fold

Cut from a double layer of fabric, right side facing in.



selvedge

Cutting Out

- 21 front with collar 2x
- 22 back 2x
- 23 sleeve 2x
- 24 front facing with collar 2x

Draft the following pieces NOT included in the pattern

- a) hem band, 60 – 64 – 68 – 72 – 76 cm (23 3/4 – 25 1/4 – 26 3/4 – 28 1/2 – 30 ins) long, 20 cm (8 ins) wide, finished width 10 cm (4 ins),
- b) 2 sleeve bands, 13.5 – 14 – 14.5 – 15 – 15.5 cm (5 3/8 – 5 1/2 – 5 3/4 – 6 – 6 1/4 ins) long, 12 cm wide (4 3/4 ins), finished width 6 cm (2 3/8 ins).

Vilene Bias Tape/stay tape: On front pieces, iron to narrow lower edges, front edges, edge of collar, and shoulder seam edges. On back piece, iron to back neck edge.

Sewing

Note: Stitch seams on stretch fabrics with a special stretch stitch or at a narrow zigzag setting.

Stitch centre back seam. Neaten seam allowances together and press to one side.

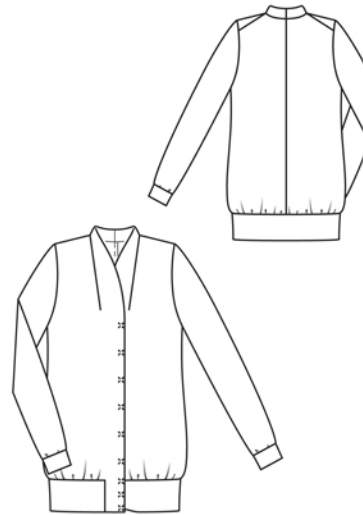
On each front piece, cut along centre of dart, about 5 cm (2 ins) long. Stitch shoulder seams. Neaten seam allowances together and press forward. Stitch centre back seam of integrated collar on front pieces. Begin at centre back and stitch collar to neck edge, right sides facing, then stitch dart. Press seam allowances onto collar and press darts forward.

Stitch side seams.

On front facings, stitch centre back seam of integrated collar. Stitch facings right sides together with narrow lower front edges. Lay facing downward. Press seam allowances open. Stitch ends of waistband to fronts, from corners, and to facings, up to seam mark. Clip seam allowance of fronts into corners. Press seams open. Pin facings right sides together with fronts and pin edges of collar together. Stitch along front edges and edges of collar. Turn collar right side out and turn facings to inside. Press edges. Pin joining seams at ends of waistband together exactly. Work from inside to stitch allowances together, close to seam. Neaten long edges of waistband together and stitch to lower edge of fronts and back, stretched to fit. Clip seam allowance of facings into each corner, between shoulder and collar. Turn in inside edge of collar and pin over joining seam. Pin facings in place, over darts. Work from right side of garment to stitch in line of collar joining seam and continue in line of dart seams, catching inside edge of collar and facings. Sew facing to shoulder seams.

Stitch sleeve seams. Stitch ends of each sleeve band together. Fold each sleeve band in half and stitch to lower edge of sleeve, stretched to fit.

Set in sleeves, easing sleeve caps.



Sew top halves of snaps to wrong side of right front as marked, taking even stitches and exiting needle on right side of fabric. Lay right front on left front, matching centres. Mark placement of bottom halves of snaps on left front. Sew bottom halves of snaps in place, as marked.

Additional Information:

Burda patterns do not include seam and hem allowances. We recommend adding 1-2 cm (3/8 - 3/4 inch) for seams and 2-5 cm (3/4 - 2 inch/es) for hems. Refer to your specific pattern instructions for exact measurements.

The fabric requirements are based on the fabric used for the original designs. These amounts will change if you use fabric of a different width. The pattern of the fabric determines whether all the pieces must be cut in the same direction or whether some can be reversed to save fabric.

The cutting layout printed with the instructions shows the best way to place the pattern pieces on our original fabric. Fold the fabric double with the right side facing in. The fabric then has a fold edge and a selvedge edge. When cutting from a single fabric layer, the right side should face up.

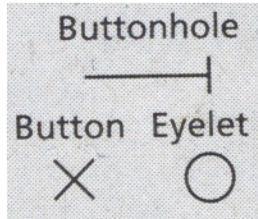
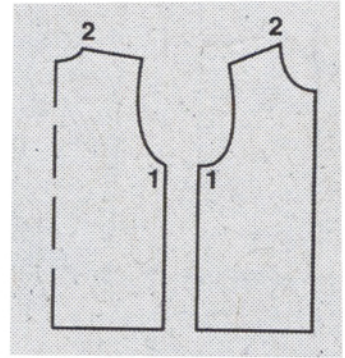
Pattern pieces which are shown in the cutting layout with broken outlines should be pinned to the fabric with their printed side facing down.

Grey shaded areas in the cutting layout indicate which pieces are to be interfaced.

Transfer the pattern piece lines to the wrong side of your fabric with burda dressmaker's carbon paper. Hand-baste along lines (e.g. for pockets or centre front) to make them visible on the right side of the fabric.

Key Symbols:

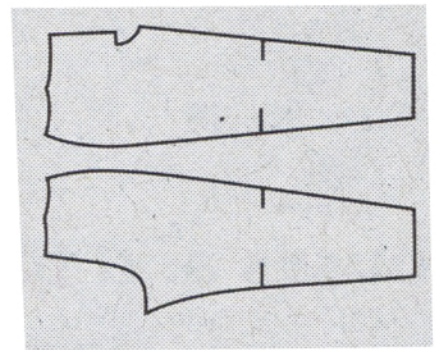
Seam numbers
show where pattern pieces must be sewn together. Match pieces with the same numbers.



Seam marks
on long seams. Match the small symbols to one another.



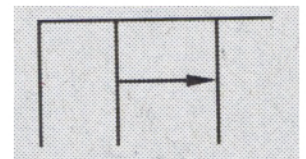
Presser foot
is the symbol for seam and top-stitching lines.



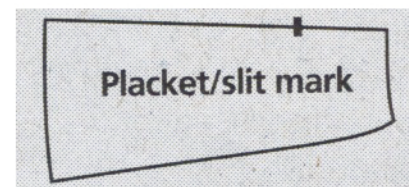
Scissors
indicate edges to be cut without seam allowances and also slash lines, e.g. pocket openings.



Pleat symbol
Fold pleat in direction of arrow.



Placket/slit mark
Indicates beginning/end of placket/slit.



Gather
Ease
Stretch

