

112 Dress

Burda sizes 36, 38, 40, 42, 44

Length from waist 49 cm (19 1/4 ins)

3/4 – sleeves, about 10 cm (4 ins) shorter than normal

Materials

Cupro poplin,
width: 140 cm (55 in)
length: 1.75 m (2 yds) for all sizes.

Elastic, 1 cm (3/8 in) wide and 0.50 – 0.50 – 0.55 – 0.55 – 0.60 m (5/8 – 5/8 – 3/4 – 3/4 – 3/4 yd) long.

Elastic, 1.5 cm (5/8 in) wide and 0.80 – 0.80 – 0.85 – 0.90 – 95 m (7/8 – 7/8 – 1 – 1 – 1 1/8 yds) long.

Recommended fabrics: Lightweight dress fabrics.

Preparations

Print the pattern out on letter or A4 sized paper. It is **very important** to not scale the document. Your pattern will print on multiple pages, which you will then tile together. Arrange the sheets on a large, hard and flat surface matching up the numbers and letters (i.e. 6A to 6A). Cut or fold one of the sides and match the edge to its corresponding side. Then, tape down in place so paper is secure.

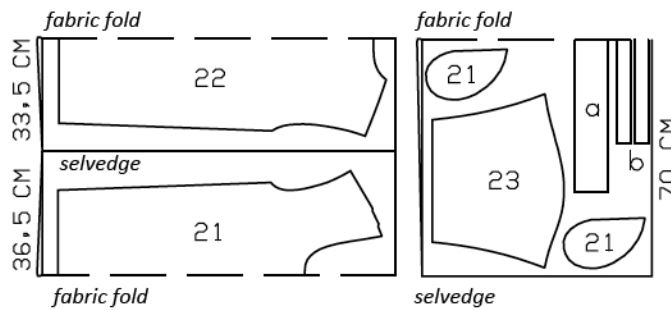
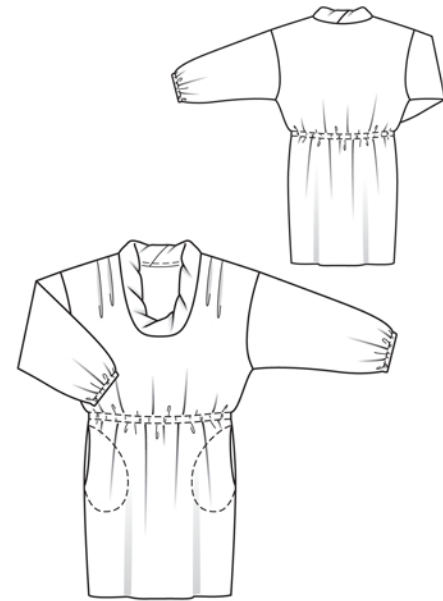
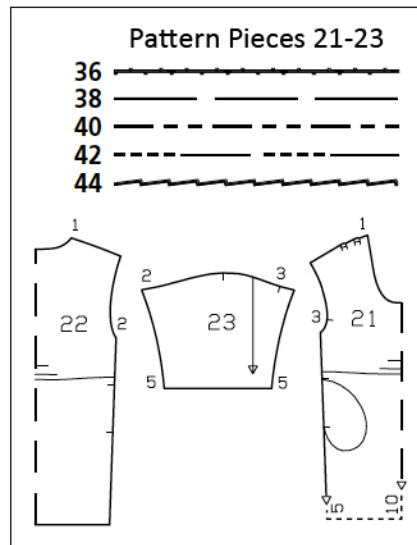
Trace the pattern pieces from the pattern sheet following the lines and markings for style 112 and your size. Trace the pocket piece from piece 21 as a separate pattern piece – it is the same for all sizes.

The pleat arrows on piece 21 are marked for size 36. For the other sizes, mark the pleat arrows accordingly.

burda style magazine patterns do not have seam allowance included.

Seam and hem allowance to be added:

Seams and edges 1.5 cm (5/8 in), hem 4 cm (1 5/8 ins), sleeve hems 2.5 cm (1 in)



Fold the fabric as shown in the pattern layout, right side facing in.

Cutting Out

- 21 front, on a fold 1x
- pocket piece 4x
- 22 back, on a fold 1x
- 23 sleeve 2x

Draft the following pieces NOT included in the pattern:

a) collar, 81 – 83 – 85 – 87 – 89 cm (32 – 32 3/4 – 33 1/2 – 34 1/4 – 35 ins) long, 10 cm (4 ins) wide, finished width 5 cm (2 ins),

b) strip for elastic casing, a total of 106 – 110 – 114 – 118 – 122 cm (41 3/4 – 43 1/2 – 45 – 46 1/2 – 48 ins) long, 4 cm (1 5/8 ins) wide (incl. allowances).

Sewing

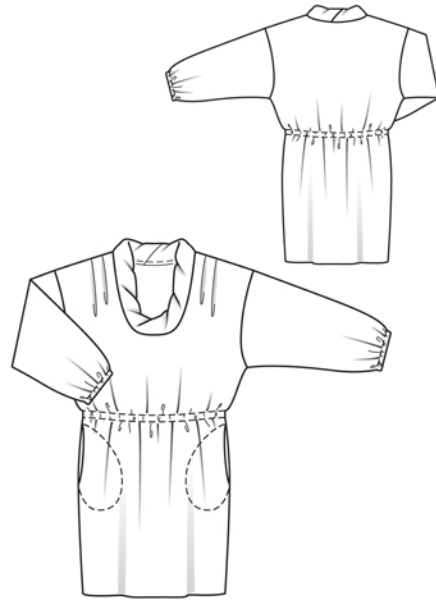
Fold pleats in front in direction of arrows and baste. Stitch shoulder seams. Stitch sleeves to armhole edges. Stitch each side seam, from slit mark, and sleeve seam as continuous seam, leaving opening for pockets. Leave sleeve seams open below hem line, to insert elastic.

In-seam pockets: Pin pocket pieces right sides together with seam allowances of pocket opening edges. Stitch in place, directly along marked seam lines. Spread pocket pieces apart and press. Topstitch 7 mm (1/4 in) from front pocket opening edges. Press pocket pieces forward and baste to wrong side of front. To stitch pocket pieces, pin paper pattern piece to front and stitch along edge of pattern piece.

Collar: Stitch narrow edges of collar together (centre back seam). Fold collar in half lengthwise, wrong side facing in. Pin joining edges of collar together, sliding inner edge approx. 3 cm (1 1/4 ins) to one side before pinning. Stitch collar to neck edge. Press allowances onto front and back.

Sew hem by hand.

Elastic casing: Press all edges of strip for waist casing to wrong side, 1 cm (3/8 in) wide. Baste facing strip to wrong side of front and back, over marked casing lines. Stitch from right side as marked. Pull elastic into casing. Sew ends of elastic together to a circumference of 72 – 76 – 80 – 84 – 88 cm (28 1/2 – 30 – 31 1/2 – 33 – 34 3/4 ins).



Additional Information:

Burda patterns do not include seam and hem allowances. We recommend adding 1-2 cm (3/8 - 3/4 inch) for seams and 2-5 cm (3/4 - 2 inch/es) for hems. Refer to your specific pattern instructions for exact measurements.

The fabric requirements are based on the fabric used for the original designs. These amounts will change if you use fabric of a different width. The pattern of the fabric determines whether all the pieces must be cut in the same direction or whether some can be reversed to save fabric.

The cutting layout printed with the instructions shows the best way to place the pattern pieces on our original fabric. Fold the fabric double with the right side facing in. The fabric then has a fold edge and a selvedge edge. When cutting from a single fabric layer, the right side should face up.

Pattern pieces which are shown in the cutting layout with broken outlines should be pinned to the fabric with their printed side facing down.

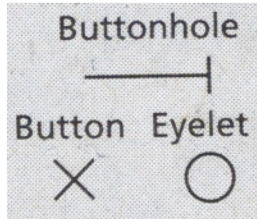
Grey shaded areas in the cutting layout indicate which pieces are to be interfaced.

Transfer the pattern piece lines to the wrong side of your fabric with burda dressmaker's carbon paper. Hand-baste along lines (e.g. for pockets or centre front) to make them visible on the right side of the fabric.

Key Symbols:

Seam numbers

show where pattern pieces must be sewn together. Match pieces with the same numbers.



Seam marks

on long seams. Match the small symbols to one another.



Presser foot is the symbol for seam and top-stitching lines.



Scissors

indicate edges to be cut without seam allowances and also slash lines, e.g. pocket openings.



Pleat symbol

Fold pleat in direction of arrow.



Placket/slit mark

Indicates beginning/end of placket/slit.



Gather
Ease
Stretch

