

### 104B Top

Burda sizes 17, 18, 19, 20, 21

Back length about 50 cm (20 ins)

### Materials

Stretch cotton tulle,  
width: 140 cm (55 in)  
length: 1.20 – 1.20 – 1.20 – 1.25 – 1.25 m  
(1 3/8 – 1 3/8 – 1 3/8 – 1 1/2 – 1 1/2 yds).

Recommended fabrics: Soft stretch tulle. Use only very elastic fabrics.

### Preparations

Print the pattern out on letter or A4 sized paper. It is **very important** to not scale the document. Your pattern will print on multiple pages, which you will then tile together. Arrange the sheets on a large, hard and flat surface matching up the numbers and letters (i.e. 6A to 6A). Cut or fold one of the sides and match the edge to its corresponding side. Then, tape down in place so paper is secure.

Trace the pattern pieces from the pattern sheet following the lines and markings for style 104A and your size. Cut pieces 1, 2, and 4 apart on the marked seam lines.

The gathering line on upper front edge is marked in full for size 17 only. For the other sizes, complete this line accordingly.

**burda style magazine patterns do not have seam allowance included.**

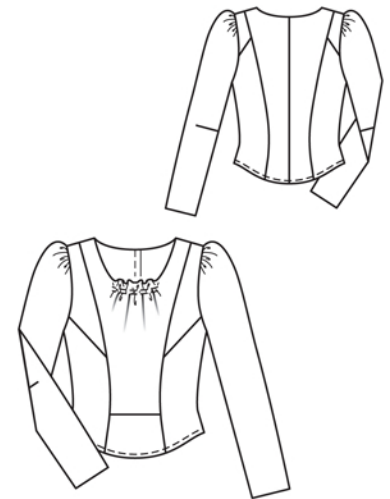
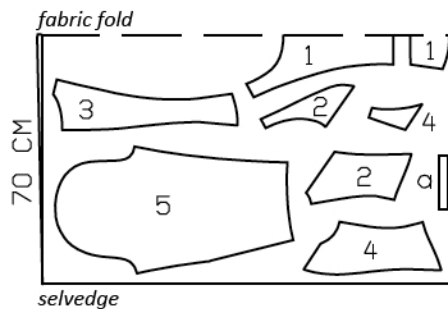
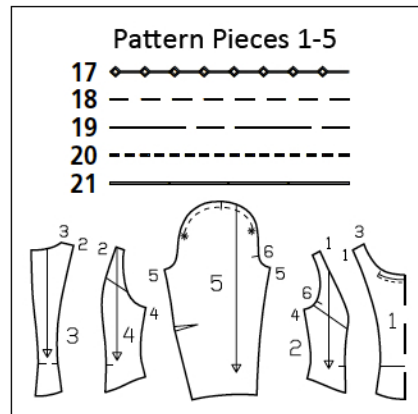
Seam and hem allowance to be added:  
Seams and hem 2 cm (3/4 in), sleeve attachment seams 1 cm (3/8 in), no allowance on neck edges and sleeve hem edges.

### Cutting Out

- 1 centre front, on a fold, cut apart, each 1x
- 2 side front, cut apart, each 2x
- 3 centre back 2x
- 4 side back, cut apart, each 2x
- 5 sleeve 2x

**Draft the following piece:**

- a) backing strip, 15 cm (6 ins) long, 2 cm (3/4 in) wide (incl. allowance).



Cut from a double layer of fabric, right side facing in.

### Sewing

Stitch horizontal section seam on centre front. Stitch slanted section seams on side front and back units. Press seam allowances up. Stitch vertical front and back section seams (seam numbers 1 and 2). Press seam allowances onto centre pieces.

Machine baste (longest stitch setting) front neck edge 4 mm (a generous 1/8 in) above and below marked gathering line. Gather fabric along machine basting to a width of 11.8 – 12 – 12.2 – 12.4 – 12.6 cm (4 5/8 – 4 3/4 – 4 13/16 – 5 7/8 – 5 ins). Lay backing strip on inside, over gathering. Stitch from right side, along lines of gathering.

Stitch centre back seam. Press seam allowances to one side. Stitch side seams and shoulder seams. Press seam allowances onto back.

Turn hem allowance to inside, turn half in, press, and stitch.

Stitch darts in sleeves. Press darts up. Stitch sleeve seams.

Set in sleeves, gathering sleeve caps.

## Additional Information:

**Burda patterns do not include seam and hem allowances.** We recommend adding 1-2 cm (3/8 - 3/4 inch) for seams and 2-5 cm (3/4 - 2 inch/es) for hems. Refer to your specific pattern instructions for exact measurements.

The fabric requirements are based on the fabric used for the original designs. These amounts will change if you use fabric of a different width. The pattern of the fabric determines whether all the pieces must be cut in the same direction or whether some can be reversed to save fabric.

The cutting layout printed with the instructions shows the best way to place the pattern pieces on our original fabric. Fold the fabric double with the right side facing in. The fabric then has a fold edge and a selvedge edge. When cutting from a single fabric layer, the right side should face up.

Pattern pieces which are shown in the cutting layout with broken outlines should be pinned to the fabric with their printed side facing down.

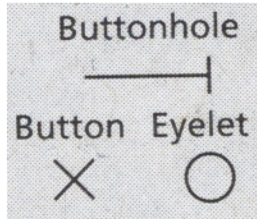
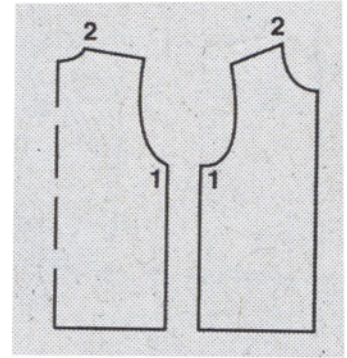
Grey shaded areas in the cutting layout indicate which pieces are to be interfaced.

Transfer the pattern piece lines to the wrong side of your fabric with burda dressmaker's carbon paper. Hand-baste along lines (e.g. for pockets or centre front) to make them visible on the right side of the fabric.

## Key Symbols:

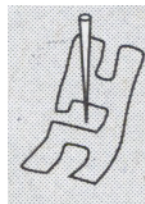
### Seam numbers

show where pattern pieces must be sewn together. Match pieces with the same numbers.

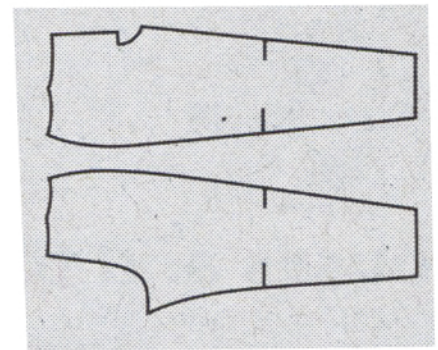


### Seam marks

on long seams. Match the small symbols to one another.



**Presser foot** is the symbol for seam and top-stitching lines.



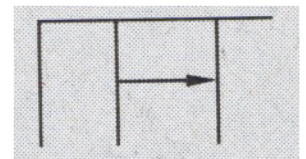
### Scissors

indicate edges to be cut without seam allowances and also slash lines, e.g. pocket openings.



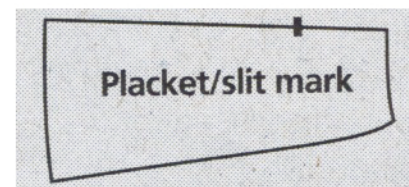
### Pleat symbol

Fold pleat in direction of arrow.



### Placket/slit mark

Indicates beginning/ end of placket/slit.



**Gather**  
**Ease**  
**Stretch**

