

114A Bolero

Burda sizes 36, 38, 40, 42, 44

Back length about 48 cm (19 ins)

Materials

Duchesse,
width: 145 cm (57 in)
length: 1.10 – 1.10 – 1.10 – 1.15 – 1.15 m
(1 1/4 – 1 1/4 – 1 1/4 – 1 3/8 – 1 3/8 yds).

Interfacing.

Recommended fabrics: Lightweight fabrics with some body

Preparations

Print the pattern out on letter or A4 sized paper. It is **very** important to not scale the document. Your pattern will print on multiple pages, which you will then tile together. Arrange the sheets on a large, hard and flat surface matching up the numbers and letters (i.e. 6A to 6A). Cut or fold one of the sides and match the edge to its corresponding side. Then, tape down in place so paper is secure.

Trace the pattern pieces from the pattern sheet following the lines and markings for style 114A and your size.

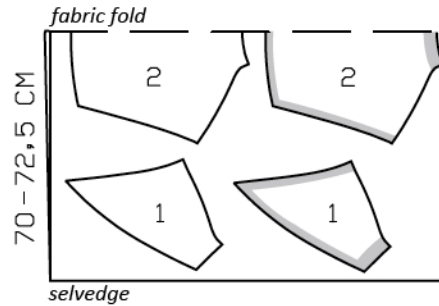
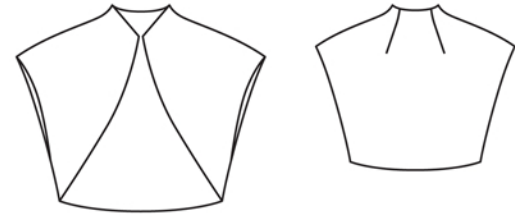
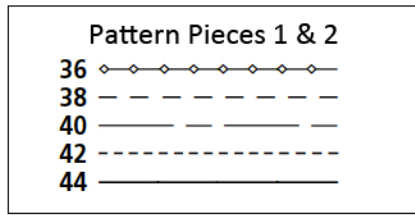
burda style magazine patterns do not have seam allowance included.

Seam and hem allowance to be added:
Seams and edges 1.5 cm (5/8 in).

Cutting Out

1 front 4x
2 back, on a fold 2x

Interfacing: See shaded pieces on pattern layout. Iron shaped strips of interfacing, about 4 cm (1 5/8 ins) wide, to attached collar of inside front and back pieces. Iron strips of interfacing, about 2 cm (3/8 in) wide, to front edges, and hem and armhole edges.



Cut from a double layer of fabric, right side facing in.

Sewing

Stitch back darts and press toward centre.

Stitch shoulder seams. Stitch side seams below marking. Press seam allowances open.

Pin bolero units right sides together. Stitch together along hem edges, front edges, and collar edges, leaving about 20 cm (8 ins) open in centre back for turning.

Turn in edges of armholes at the shoulder seam and hold together with a single straight pin. Reach through opening in edge of hem, between outer and inner fabric layers, to first pull out edge of one armhole. Remove the pin but keep hold of the edges. Stitch edges of armhole together, with right sides facing. Push armhole in again and pull finished edge out. Stitch edge of other armhole in same manner. Press edges. Sew opening closed.

Additional Information:

Burda patterns do not include seam and hem allowances. We recommend adding 1-2 cm (3/8 - 3/4 inch) for seams and 2-5 cm (3/4 - 2 inch/es) for hems. Refer to your specific pattern instructions for exact measurements.

The fabric requirements are based on the fabric used for the original designs. These amounts will change if you use fabric of a different width. The pattern of the fabric determines whether all the pieces must be cut in the same direction or whether some can be reversed to save fabric.

The cutting layout printed with the instructions shows the best way to place the pattern pieces on our original fabric. Fold the fabric double with the right side facing in. The fabric then has a fold edge and a selvedge edge. When cutting from a single fabric layer, the right side should face up.

Pattern pieces which are shown in the cutting layout with broken outlines should be pinned to the fabric with their printed side facing down.

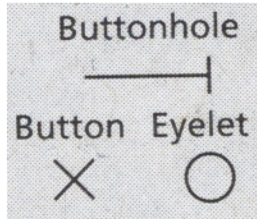
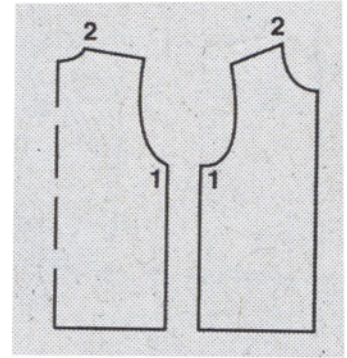
Grey shaded areas in the cutting layout indicate which pieces are to be interfaced.

Transfer the pattern piece lines to the wrong side of your fabric with burda dressmaker's carbon paper. Hand-baste along lines (e.g. for pockets or centre front) to make them visible on the right side of the fabric.

Key Symbols:

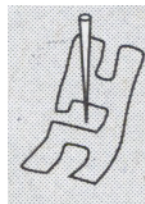
Seam numbers

show where pattern pieces must be sewn together. Match pieces with the same numbers.

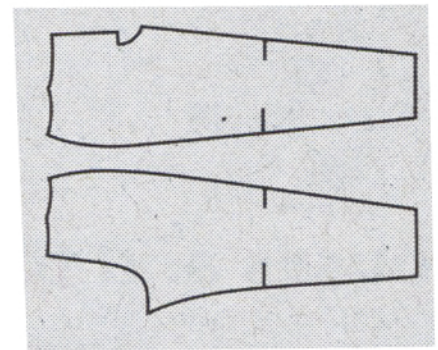


Seam marks

on long seams. Match the small symbols to one another.



Presser foot is the symbol for seam and top-stitching lines.



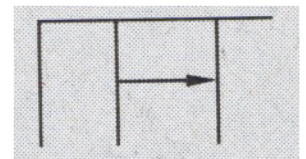
Scissors

indicate edges to be cut without seam allowances and also slash lines, e. g. pocket openings.



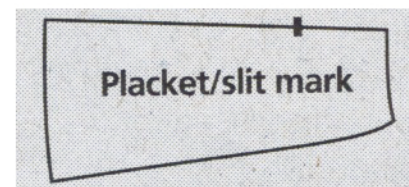
Pleat symbol

Fold pleat in direction of arrow.



Placket/slit mark

Indicates beginning/ end of placket/slit.



Gather
Ease
Stretch

