

116A Blazer

Burda sizes 38, 40, 42, 44, 46

Back length about 70 cm (28 ins)

Materials

Crêpe satin

width: 135 cm (53 in)

length: 2.30 – 2.30 – 2.30 – 2.50 – 2.50 m
(2 5/8 – 2 5/8 – 2 5/8 – 2 3/4 – 2 3/4 yds).

Lining,

width: 140 cm (55 in)

length: 1.40 m (1 5/8 yds).

Interfacing.

1 large button and 8 smaller buttons, covered with fabric.

Shoulder pads.

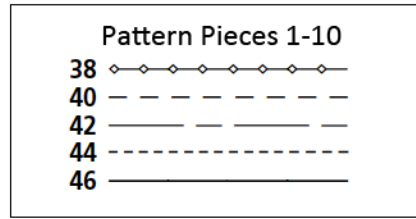
Recommended fabrics: Jacket fabrics.

Preparations

Print the pattern out on letter or A4 sized paper. It is very important to not scale the document. Your pattern will print on multiple pages, which you will then tile together. Arrange the sheets on a large, hard and flat surface matching up the numbers and letters (i.e. 6A to 6A). Cut or fold one of the sides and match the edge to its corresponding side. Then, tape down in place so paper is secure.

Trace the pattern pieces from the pattern sheet following the lines and markings for style 116A and your size. Trace the front facing from piece 1 as a separate pattern piece. The pocket lines (lower pocket) on pieces 1 and 3 are marked for size 38. Remark the pocket lines for sizes 40 – 46 according to the size lines. The pocket begins for each size 2 cm (3/4 in) before the dart. The pocket lines (upper pocket) on piece 1 are marked in full for size 38 only. Complete the lines for the other sizes accordingly. The buttonholes on piece 4 are marked for size 38. Remark the buttonholes for the other sizes accordingly.

Front lining piece: Trace the front as a separate pattern piece, up to the facing line. Mark and cut a horizontal line from section seam edge to point



of dart. Lay vertical dart closed and glue horizontal edges together at bottom end of dart. This will create a bust dart for the lining piece (see cutting layout).

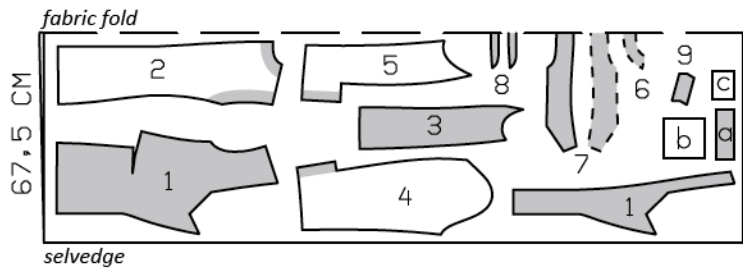
burda style magazine patterns do not have seam allowance included.

Seam and hem allowance to be added:

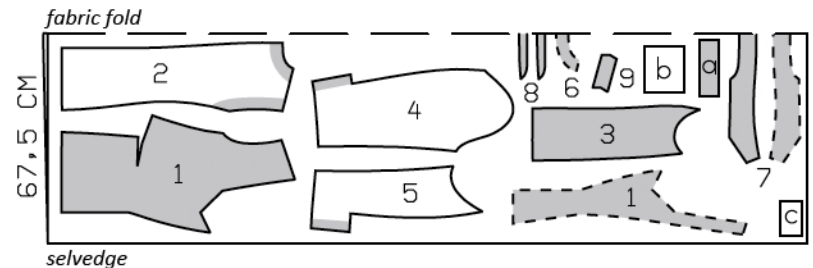
Seams and edges 1.5 cm (5/8 in), hem and sleeve hems 4 cm (1 5/8 ins), no allowance at horizontal edges of front (marked with scissors symbol), but 1.5 cm (5/8 in) allowance at dart. Cut lining pieces with 1.5 cm (5/8 in) seam and hem allowances.

Crepe Satin, 135cm wide

Sizes 38-42

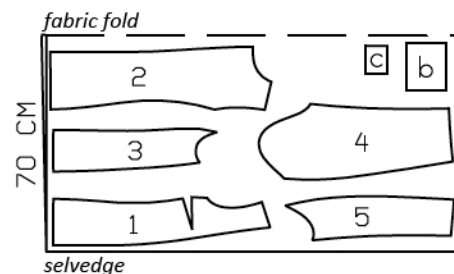


Sizes 44, 46



Lining, 140cm wide

Sizes 38-46



Cutting Out

Outer fabric:

- 1 front 2x
- front facing 2x
- 2 back 2x
- 3 side piece 2x
- 4 upper sleeve 2x
- 5 undersleeve 2x
- 6 back facing, on a fold 1x
- 7 collar, on a fold 2x
- 8 collar band, on a fold 2x
- 9 upper left welt 1x

Draft the following pieces NOT included in the pattern:

b) 2 pocket pieces (lower pocket), 16 – 16.5 – 17 – 17.5 – 18 cm (6 3/8 – 6 1/2 – 6 3/4 – 7 – 7 1/8 ins) wide, 16 cm (6 3/8 ins) long (incl. allowance),

c) pocket piece (upper pocket), 12 – 12.5 – 13 – 13.5 – 14 cm (4 3/4 – 5 – 5 1/4 – 5 3/8 – 5 1/2 ins) wide, 10 cm (4 ins) long (incl. allowance).

a) 2 welt strips, 16 – 16.5 – 17 – 17.5 – 18 cm (6 3/8 – 6 1/2 – 6 3/4 – 7 – 7 1/8 ins) long, 6 cm (3 3/8 ins) wide (incl. allowance).

Lining: piece 1 as listed under “Preparation“, piece 2 minus neck facing and at centre back with an ease pleat of about 2 cm (3/4 in), pieces 4 and 5 without slit allowances, piece 3, and pieces b and c.

Interfacing: See pattern layout. Also interface hem allowances.

Sewing

Stitch bust darts. Clip bottom horizontal edge of fronts close to end of seam. Press darts allowances open, pressing points of darts flat. Spread horizontal edges of fronts open and baste together with herringbone stitch. Stitch front section seams. Press seam allowances open.

Construct single welt pockets on fronts: Mark an abutting line for each welt, 1.5 cm (5/8 in) from joining line (= finished width of welt). Fold welt strips lengthwise, right side facing out, and press. Baste doubled strips over pocket markings so that fold edge of each welt meets with



abutting line and open lengthwise edges lie over marked slash line. Stitch welts along joining lines. Stitch fabric pocket pieces to pocket piece joining line. Slash between lines of stitching and clip diagonally toward each last stitch, not catching welts or pocket pieces. Turn welts over pocket openings. Pull pocket pieces to inside. Stitch pocket lining pieces to seam allowances of welt joining seams. Fold small triangles at pocket opening ends to inside and stitch to welts and pocket pieces, from seam end to seam end. Trim pocket pieces even and stitch together.

Construct welt pocket on upper left front: Fold welt lengthwise with right side facing in and stitch across ends. Turn welt right side out. Stitch welt right sides together with front, along marked joining line. Pin fabric pocket piece to marked slash line, opposite welt, and stitch along pocket piece joining line. This seam should be about 5 mm (3/16 in) shorter at the ends than the welt joining seam. Slash between lines of stitching and clip diagonally toward each last stitch. Do not cut into pocket pieces. Pull pocket pieces to inside. Press welt over pocket opening. Work from inside to stitch pocket lining piece to seam allowances of welt joining seam. Fold small triangles at pocket opening ends to inside and sew in place on pocket pieces. Trim pocket pieces even and stitch together. Sew ends of welt in place, by hand.

Stitch centre back seam, back section seams and shoulder seams. Stitch facing seams.

Notched collar: Pin facings right sides together with jacket. Pin lapel fold lines together. Build a little extra fullness into corners of lapels. Stitch facings to edges of lapels, from marking, and to front edges. Leave facings lying right sides together with jacket for now. Stitch collar band pieces to collar pieces. Trim seam allowances and press open. Topstitch close to each side of seams. Stitch collar pieces together along outer edges, building a little extra fullness into top collar and beginning and ending stitching at seam line of joining edge. Turn collar right side out. Lay collar between jacket and facing. Stitch undercollar to neck edge of jacket, from each marking to corner. Clip seam allowance of fronts at marking and at corner. Stitch lengthwise edge of undercollar to neck edge of jacket. Stitch top collar to facing, clipping seam allowance of facing at marking and at corner. Press seam allowances of collar joining seams open. Turn facing to inside.

Sewing Continued...

Pin collar joining seams together exactly. Lay back facing up and stitch seam allowances together, close to collar joining seam. Lay facing down again. Tip: To give the points of the lapels more stability, work from the lower side to sew the narrow edges to the collar, with herringbone stitch, from the corner, about 2.5 cm (1 in) long.

Two-piece sleeve with vent: Stitch front sleeve seams (seam number 7). Lay vent facing on upper sleeves and hem allowance outward. Mitre the corner. Trim allowances of mitred seam to a width of 5 mm (3/16 in) and press open. Turn facings of upper sleeves and hem allowances to inside. Stitch back sleeve seams above vents. Clip seam allowances into corner and press open. Sew hem allowances in place by hand. Press vent facings on undersleeves to inside and sew to hem allowance. Work buttonholes in front edges of vents. Stitch across facing and underlap at top of vent.

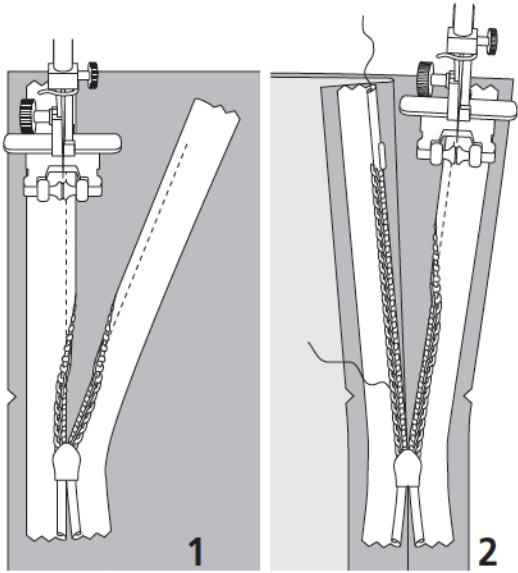
Set in sleeves, easing sleeve caps. Sew shoulder pads in place.

Unfold facings at hem. Press hem allowance to inside but do not yet sew in place.

Line jacket, hem: Stitch allowances of centre seam on back lining together, 1 cm (3/8 in) from edge. Stitch along centre back at top and bottom, each about 5 cm (2 ins) long, for ease pleat, and baste in between. Press pleat to one side. Stitch darts and seams of lining. Set in sleeve linings. Stitch lining to inside edges of facing, laying hem allowance down. Lay lining inside jacket, pulling linings into sleeves. Lay hem allowance to inside and sew in place by hand. Turn in lining along lower edge of jacket and press fold edge lightly. Push upward in a shallow curve and pin to hem allowance. Sew facings and lining in place. Lay extra length of lining down and press lightly. Now first pin lining to underlap of sleeve vents. Trim lining lying on top to 1 cm (3/8 in) before edge of underlap, trim away 1 cm (3/8 in) below end of vent, and clip about 1 cm (3/8 in) long into corner. Turn in lining and pin to inside edge of vent facing and to top of vent. Turn in lower edge of lining and

pin to hem allowance. Sew lining in place.

Work buttonhole in right front.



These special zippers come in various lengths. The zipper should be at least 2 cm (3/4 in) longer than the slit. It is sewn in place before the seam below the slit is stitched. A special presser foot is required to sew the zipper in place.

Sewing the zipper in place:

Open the zipper and push the coil back with your thumbnail to reveal the seam marking between the tape and the coil. Place the open zipper right side down on the right fabric side of one slit edge.

In order to stitch the zipper in place exactly along the marked seam line, you must first calculate the distance between the tape edge and the fabric edge as follows: width of seam allowance minus 1 cm (3/8 in) tape width = distance from edge of fabric. This will yield a value of 5 mm (3/16 in) if the width of the seam allowance is 1.5 cm (5/8 in).

Pin the top end of the zipper tape in place, the calculated distance from the edge of the fabric. The bottom end of the zipper will extend past the marked end of the slit. Place the presser foot on the zipper so that the coil is in the notch to the right of the needle (1). Stitch zipper in place, from the top to the marked end of the slit. Close zipper.

Place the other zipper tape face down on the opposite slit edge and pin in place at the top. Open zipper again. Place the presser foot on the top end of the zipper so that the coil is in the notch to the left of the needle (2). Sew the zipper in place, from the top to the end of the slit. Close zipper.

Now stitch the seam below the zipper, from bottom to top. Turn the loose lower end of the zipper out of the way, over the seam allowance. Stitch as close as possible to the last stitches of the zipper seams. Trim away excess zipper and bind the end with a scrap of fabric.

Additional Information:

Burda patterns do not include seam and hem allowances. We recommend adding 1-2 cm (3/8 - 3/4 inch) for seams and 2-5 cm (3/4 - 2 inch/es) for hems. Refer to your specific pattern instructions for exact measurements.

The fabric requirements are based on the fabric used for the original designs. These amounts will change if you use fabric of a different width. The pattern of the fabric determines whether all the pieces must be cut in the same direction or whether some can be reversed to save fabric.

The cutting layout printed with the instructions shows the best way to place the pattern pieces on our original fabric. Fold the fabric double with the right side facing in. The fabric then has a fold edge and a selvedge edge. When cutting from a single fabric layer, the right side should face up.

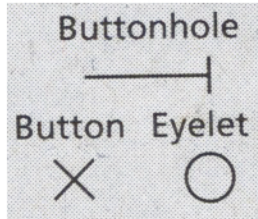
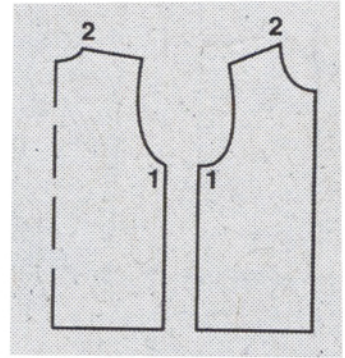
Pattern pieces which are shown in the cutting layout with broken outlines should be pinned to the fabric with their printed side facing down.

Grey shaded areas in the cutting layout indicate which pieces are to be interfaced.

Transfer the pattern piece lines to the wrong side of your fabric with burda dressmaker's carbon paper. Hand-baste along lines (e.g. for pockets or centre front) to make them visible on the right side of the fabric.

Key Symbols:

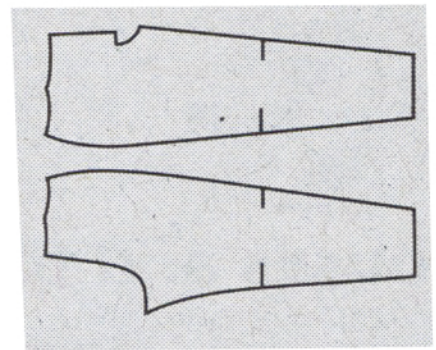
Seam numbers
show where pattern pieces must be sewn together. Match pieces with the same numbers.



Seam marks
on long seams. Match the small symbols to one another.



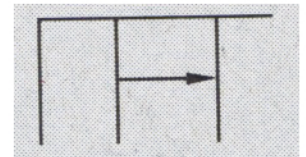
Presser foot
is the symbol for seam and top-stitching lines.



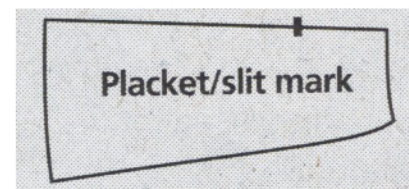
Scissors
indicate edges to be cut without seam allowances and also slash lines, e.g. pocket openings.



Pleat symbol
Fold pleat in direction of arrow.



Placket/slit mark
Indicates beginning/end of placket/slit.



Gather
Ease
Stretch

