

107 Dress

Burda sizes 36, 38, 40, 42, 44

Length from waist 58 cm (23 ins)

Materials

Jacquard fabric with crosswise stretch,
width: 145 cm (57 in)
length: 1.20 m (1 3/8 yds) for all sizes.

Lining,
width: 140 cm (55 in)
length: 1.10 m (1 1/4 yds).

Interfacing.

Vilene Bias Tape.

Boning tape, 8 mm (a good 1/4 in) wide and 0.80 m (1 yd) long.

1 invisible zip, 40 cm (16 ins) long.

Hook-and-eye fastener.

Recommended fabrics: Dress fabrics with some body, with or without elastane.

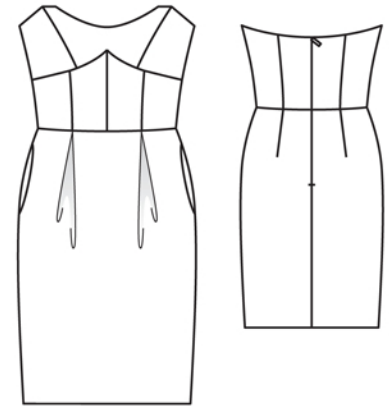
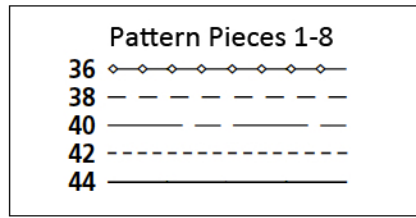
Preparations

Print the pattern out on letter or A4 sized paper. It is very important to not scale the document. Your pattern will print on multiple pages, which you will then tile together. Arrange the sheets on a large, hard and flat surface matching up the numbers and letters (i.e. 6A to 6A). Cut or fold one of the sides and match the edge to it's corresponding side. Then, tape down in place so paper is secure.

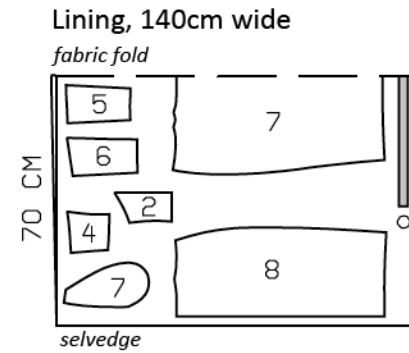
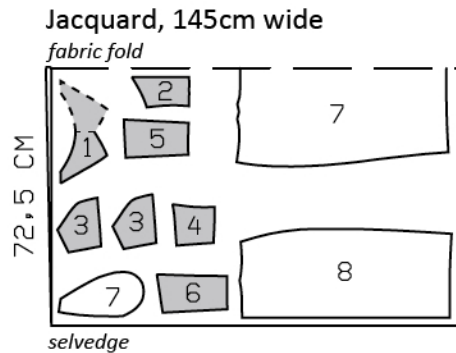
Trace the pattern pieces from the pattern sheet following the lines and markings for style 107 and your size. Trace the pocket piece from piece 7 as a separate pattern piece – it is the same for all sizes.

burda style magazine patterns do not have seam allowance included.

Seam and hem allowance to be added:
Seams and edges 1.5 cm (5/8 in), hem 4 cm (1 5/8 ins), lining 1.5 cm (5/8 in).



Cut from a double layer of fabric, right side facing in.



Cutting Out

Jacquard:

- 1 centre bust piece, on a fold 2x
- 2 centre front 2x
- 3 side bust piece 4x
- 4 side front 2x
- 5 centre back 2x
- 6 side back 2x
- 7 front skirt panel, on a fold 1x
- pocket piece 2x
- 8 back skirt panel 2x

Lining: pieces 2, 4, 5, 6, 7 and 8, and also pocket piece.

Draft the following piece NOT included in the pattern:

- a) narrow band, 69 – 73 – 77 – 81 – 85 cm (27 1/4 – 28 3/4 – 30 1/2 – 32 – 33 1/2 ins) long and 2.5 cm (1 in) wide, finished width 1.2 cm (1/2 in).

Interfacing: See shaded pieces in pattern layout.

Vilene Bias Tape: Iron onto upper edges of outer bust pieces and back pieces.

Sewing

Stitch centre front seam and front section seams. Begin centre seam exactly at diagonal upper seam line. Press seam allowances open. Cut two pieces of boning, each 6 mm (1/4 in) shorter than section seams (finished length without allowances), and round off ends slightly. Stitch boning to pressed-open seam allowances of section seams, beginning 3 mm (1/8 in) below upper seam line. Stitch centre bust pieces to side bust pieces. Press seam allowances open. Lay one bust unit aside, it will be sewn to lining. Stitch other bust unit to front, clipping seam allowance of bust pieces into corner. Press allowances up.

Stitch back section seams and side seams. Press seam allowances open. Stitch boning in place as for front section seams.

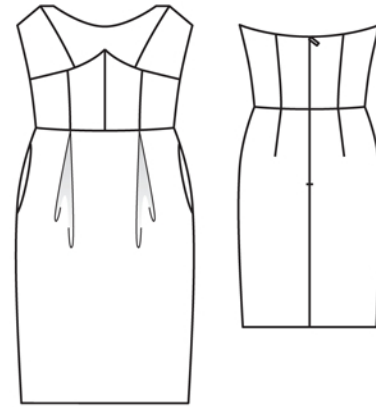
Stitch darts in back skirt panels and press to centre. Fold pleats in front skirt panel in arrow direction and baste. Stitch side seams of skirt, not stitching across pocket openings.

In-seam pockets: Pin pocket pieces right sides together with seam allowances of pocket opening edges – pocket lining pieces in front, fabric pocket pieces in back. Stitch pocket pieces in place along marked seam lines, stitching pocket pieces close to seam above pocket opening edges. Press pocket pieces forward and stitch together. Baste upper edges of pocket pieces in place.

Stitch skirt to bodice. Press seam allowances up.

Sew invisible zip to back opening edges, see the "Helpful Hint" on next page. Stitch centre back seam from lower edge to zip.

Fold strip for narrow band lengthwise, right side facing in. Stitch 1.2 cm (1/2 in) from fold edge. Turn band right side out. Try on dress and lay band around waist. Turn ends in so that fold edges meet exactly. Sew hook and eye to ends of band. Mark centre of band. Pin band to inside, along skirt joining seam, so that centre meets centre front and ends meet teeth of zip. Sew band to seam allowance of skirt joining seam, with a few stitches at centre front, at sec-



tion seams and at side seams, easing dress evenly.

Stitch centre front seam and section seams of lining front. Stitch bust unit to front lining. Stitch darts and remaining seams on lining. Leave opening for zip. Pin lining with bust unit right sides together with upper edge of dress. Turn lining at zip opening back about 5 mm (3/16 in) before edge and pin to upper edge. Lay allowances on opening edge of dress outward and pin to upper edge, over lining. Stitch along upper edge of dress. Trim seam allowances. Lay allowances at opening edges to inside. Lay lining (and bust unit) up and stitch to seam allowances, as far as possible, close to seam. Turn lining to inside and sew to zip tapes.

Press hem allowance to inside and sew in place by hand. Hem lining so that it is about 2 cm (3/4 in) shorter than dress.

Loops for hanging: Cut two bias strips of lining fabric, each 50 cm (20 ins) long and 3 cm (1 1/4 ins) wide, to make loops for hanging. Sew narrow bands, 7 mm (1/4 in) wide. Form bands in loops and sew ends together to skirt joining seam, over side seams, on inside of dress.



These special zippers come in various lengths. The zipper should be at least 2 cm (3/4 in) longer than the slit. It is sewn in place before the seam below the slit is stitched. A special presser foot is required to sew the zipper in place.

Sewing the zipper in place:

Open the zipper and push the coil back with your thumbnail to reveal the seam marking between the tape and the coil. Place the open zipper right side down on the right fabric side of one slit edge.

In order to stitch the zipper in place exactly along the marked seam line, you must first calculate the distance between the tape edge and the fabric edge as follows: width of seam allowance minus 1 cm (3/8 in) tape width = distance from edge of fabric. This will yield a value of 5 mm (3/16 in) if the width of the seam allowance is 1.5 cm (5/8 in).

Pin the top end of the zipper tape in place, the calculated distance from the edge of the fabric. The bottom end of the zipper will extend past the marked end of the slit. Place the presser foot on the zipper so that the coil is in the notch to the right of the needle (1). Stitch zipper in place, from the top to the marked end of the slit. Close zipper.

Place the other zipper tape face down on the opposite slit edge and pin in place at the top. Open zipper again. Place the presser foot on the top end of the zipper so that the coil is in the notch to the left of the needle (2). Sew the zipper in place, from the top to the end of the slit. Close zipper.

Now stitch the seam below the zipper, from bottom to top. Turn the loose lower end of the zipper out of the way, over the seam allowance. Stitch as close as possible to the last stitches of the zipper seams. Trim away excess zipper and bind the end with a scrap of fabric.

Additional Information:

Burda patterns do not include seam and hem allowances. We recommend adding 1-2 cm (3/8 - 3/4 inch) for seams and 2-5 cm (3/4 - 2 inch/es) for hems. Refer to your specific pattern instructions for exact measurements.

The fabric requirements are based on the fabric used for the original designs. These amounts will change if you use fabric of a different width. The pattern of the fabric determines whether all the pieces must be cut in the same direction or whether some can be reversed to save fabric.

The cutting layout printed with the instructions shows the best way to place the pattern pieces on our original fabric. Fold the fabric double with the right side facing in. The fabric then has a fold edge and a selvedge edge. When cutting from a single fabric layer, the right side should face up.

Pattern pieces which are shown in the cutting layout with broken outlines should be pinned to the fabric with their printed side facing down.

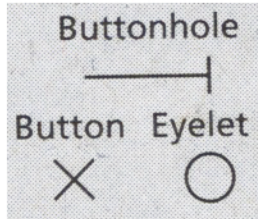
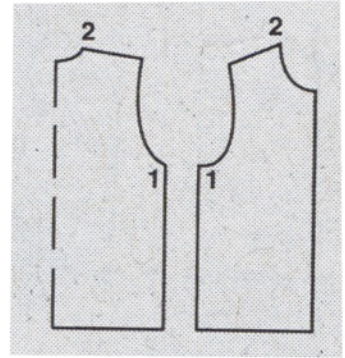
Grey shaded areas in the cutting layout indicate which pieces are to be interfaced.

Transfer the pattern piece lines to the wrong side of your fabric with burda dressmaker's carbon paper. Hand-baste along lines (e.g. for pockets or centre front) to make them visible on the right side of the fabric.

Key Symbols:

Seam numbers

show where pattern pieces must be sewn together. Match pieces with the same numbers.



Seam marks

on long seams. Match the small symbols to one another.



Presser foot is the symbol for seam and top-stitching lines.



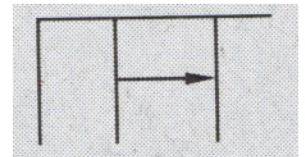
Scissors

indicate edges to be cut without seam allowances and also slash lines, e.g. pocket openings.



Pleat symbol

Fold pleat in direction of arrow.



Placket/slit mark

Indicates beginning/ end of placket/slit.



Gather
Ease
Stretch

