

### 108 Dress

with overskirt and bow belt

**Burda sizes 36, 38, 40, 42, 44**

Length of dress from waist 114 cm (45 ins),  
measured at centre front

Length of overskirt 114 cm (45 ins)

### Materials

Duchesse with crosswise stretch,  
width: 120 cm (47 in)

length: 3.25 – 3.30 – 3.35 – 3.40 – 3.45 m  
(3 5/8 – 3 5/8 – 3 3/4 – 3 3/4 – 3 7/8 yds).

Lining,

width: 140 cm (55 in)

length: 2.20 m (2 1/2 yds) for all sizes.

Tulle,

width: 150 cm (59 in)

length: 5.00 m (5 1/2 yds).

Interfacing.

Vilene Bias Tape.

Boning tape, 8 mm (a good 1/4 in) wide and 0.80 m (1 yd) long.

1 invisible zip, 40 cm (16 ins) long.

3 hook-and-eye fasteners.

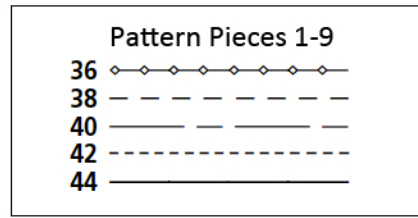
2 sew-on snap fasteners.

Recommended fabrics: Dress fabrics with some body, with or without elastane.

### Preparations

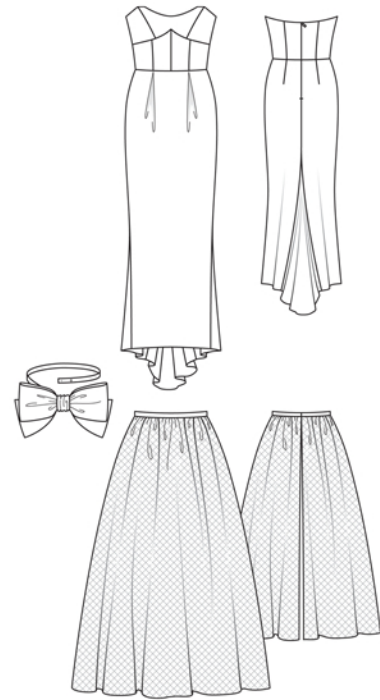
Print the pattern out on letter or A4 sized paper. It is **very important** to not scale the document. Your pattern will print on multiple pages, which you will then tile together. Arrange the sheets on a large, hard and flat surface matching up the numbers and letters (i.e. 6A to 6A). Cut or fold one of the sides and match the edge to its corresponding side. Then, tape down in place so paper is secure.

Trace the pattern pieces from the pattern sheet following the lines and markings for style 108 and your size.

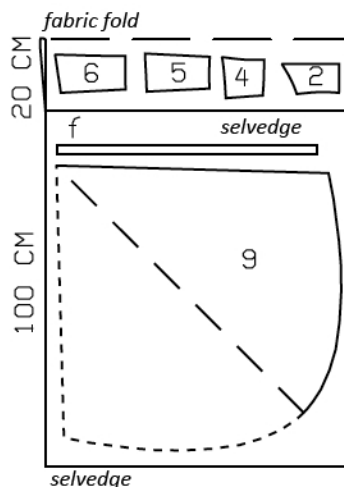
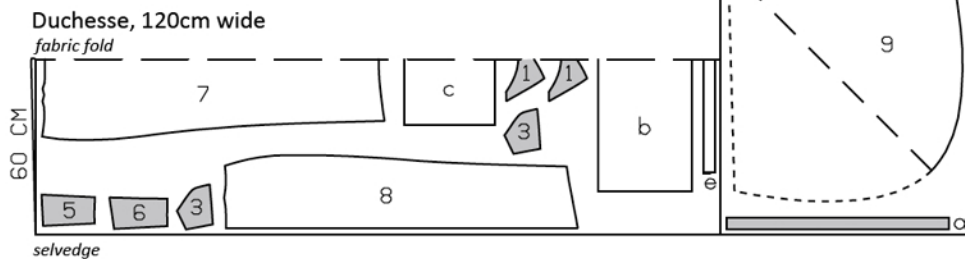


**burda style magazine patterns do not have seam allowance included.**

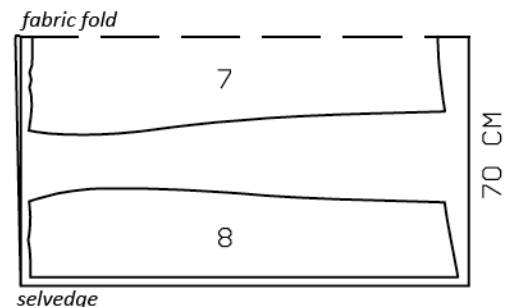
Seam and hem allowance to be added:  
Seams and edges 1.5 cm (5/8 in), hem 4 cm (1 5/8 ins), lining 1.5 cm (5/8 in). No allowance at lower edge and at back edges of overskirt panel.



Right side faces in on a double layer of fabric.  
Right side faces up on a single layer. Cut right and left pieces as opposites.



Lining, 140 wide



## Cutting Out

### Duchesse:

- 1 centre bust piece, on a fold 2x
- 2 centre front 2x
- 3 side bust piece 4x
- 4 side front 2x
- 5 centre back 2x
- 6 side back 2x
- 7 front skirt panel, on a fold 1x
- 8 back skirt panel 2x
- 9 back godet, on a fold 1x

### Draft the following pieces NOT included:

- a) waistband (overskirt) with 3 cm (1 1/4 in) underlap, 72 – 76 – 80 – 84 – 88 cm (28 1/2 – 30 – 31 1/2 – 33 – 34 3/4 ins) long, 4 cm (1 1/2 ins) wide, finished width 2 cm (3/4 in),
- b) bow, 90 cm (36 ins) long, 30 cm (12 ins) wide, finished width 15 cm (6 ins),
- c) band for bow, 45 cm (18 ins) long, 30 cm (12 ins) wide, finished width 15 cm (6 ins),
- d) bow “knot” 16 cm (6 3/8 ins) long, 16 cm (6 3/8 ins) wide,
- e) belt (bow), with 3 cm (1 1/4 in) underlap, 73 – 77 – 81 – 85 – 89 cm (28 3/4 – 30 1/2 – 32 – 33 1/2 – 35 ins) long, 4 cm (1 1/2 ins) wide, finished width 2 cm (3/4 in).

### Lining:

pieces 2, 4, 5, 6, 7, 8 and 9,

- f) narrow band, 69 – 73 – 77 – 81 – 85 cm (27 1/4 – 28 3/4 – 30 1/2 – 32 – 33 1/2 ins) long and 2.5 cm (1 in) wide, finished width 1.2 cm (1/2 in).

### Tulle:

overskirt panel, 500 cm (197 ins) wide, 114 cm (45 ins) long.

Interfacing: See shaded pieces in pattern layout.

Vilene Bias Tape: Iron onto upper edges of outer bust and back pieces.

## Sewing

Stitch centre front seam and front section seams. Begin centre seam exactly at diagonal upper seam line. Press seam allowances open. Cut two pieces of boning, each 6 mm (1/4 in) shorter than section seams (finished length without allowances), and round off ends slightly. Stitch boning to pressed-open seam allowances of section seams, beginning 3 mm (1/8 in) below upper seam line. Stitch centre bust pieces to side bust pieces. Press seam allowances open. Lay one bust unit aside, it will be sewn to lining. Stitch other bust unit to front, clipping seam allowance of bust pieces into corner. Press allowances up.

Stitch back section seams and side seams. Press seam allowances open. Stitch boning in place as for front section seams.

Stitch darts in back skirt panels and press to centre. Fold pleats in front skirt panel in arrow direction and baste. Stitch side seams of skirt.

Stitch godet in centre back seam. Lay godet pieces of outer fabric and lining right sides facing, and stitch lower edges together. Trim seam allowances. Lay lining down and stitch to allowances, close to seam. Turn lining to inside and press lower edge. Baste side edges together. Stitch back godet to back pieces below marking. Sew lining to godet joining seams.

Sew invisible zip to back opening edges, see the “Helpful Hint” on page 3. Stitch centre back seam from lower edge to zip.

Fold strip for narrow band lengthwise, right side facing in. Stitch 1.2 cm (1/2 in) from fold edge. Turn band right side out. Try on dress and lay band around waist. Turn ends in so that fold edges meet exactly. Sew hook and eye to ends of band. Mark centre of band. Pin band to inside, along skirt joining seam, so that centre meets centre front and ends meet teeth of zip. Sew band to seam allowance of skirt joining seam, with a few stitches at centre front, at section seams and at side seams, easing dress evenly.

Stitch centre front seam and section seams of lining front. Stitch bust unit to front lining. Stitch darts and remaining seams on lining. Leave opening for zip. Pin lining with bust unit right sides together with upper edge of dress. Turn lining at zip opening back about 5 mm (3/16 in) before edge and pin to upper edge. Lay allowances on opening edge of dress outward and pin to upper edge, over lining. Stitch along upper edge of dress. Trim seam allowances. Lay allowances at opening edges to inside. Lay lining (and bust unit) up and stitch to seam allowances, as far as possible, close to seam. Turn lining to inside and sew to zip tapes.

Press hem allowance to inside and sew in place by hand. Hem lining so that it is about 2 cm (3/4 in) shorter than dress.

Loops for hanging: Cut two bias strips of lining fabric, each 50 cm (20 ins) long and 3 cm (1 1/4 ins) wide, to make loops for hanging. Sew narrow bands, 7 mm (1/4 in) wide. Form bands in loops and sew ends together to skirt joining seam, over side seams, on inside of dress.

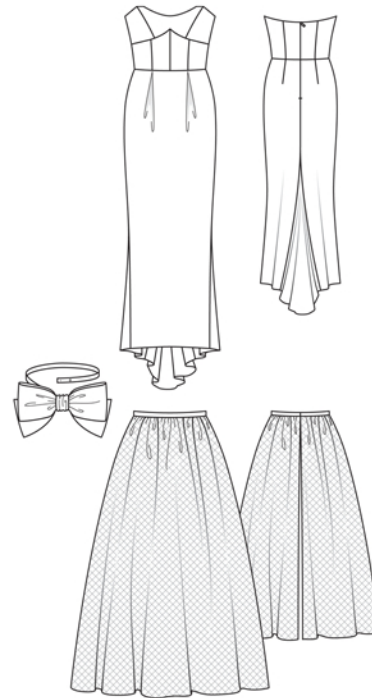
**Sewing Continued...****Overskirt**

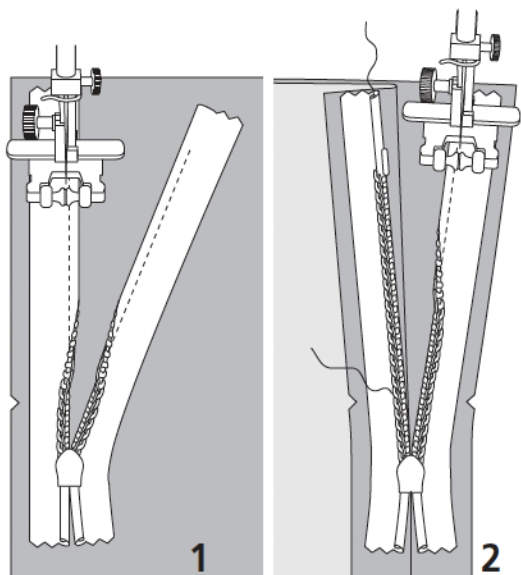
Gather upper edge of overskirt panel to 69 – 73 – 77 – 81 – 85 cm (27 1/4 – 28 3/4 – 30 1/2 – 32 – 33 1/2 ins).

Stitch waistband to upper edge of overskirt panel, leaving waistband underlap extending. Press seam allowances of joining seam onto waistband. Fold waistband lengthwise, right side facing in. Lay seam allowances at underlap down again. Stitch edges of underlap and ends of waistband together. Turn waistband right side out. Turn in inside edge and sew to joining seam. Fasten waistband hook and eye.

**Belt**

Fold belt lengthwise, right side facing in. Stitch edges together, leaving a section of seam open for turning. Turn belt right side out. Sew opening closed. Fold bow lengthwise, right side facing in. Stitch lengthwise edges together. Centre seam on bow. Press seam allowances open. Turn bow right side out. Fold band for bow lengthwise. Stitch edges together, leaving an opening, about 5 cm (2 ins) long, in centre for turning. Turn band for bow right side out and press. Sew seam opening closed. Press lengthwise edges of "knot" piece to inside for a finished width of 8 cm (3 1/4 ins). Turn ends of bow piece in to the centre and sew together. Lay band for bow under bow. Gather bow together in the middle. Lay "knot" around middle of bow, gather to a width of about 5 cm (2 ins), and sew to back. Sew one end of belt to back of bow. Fasten belt with hook and eye. Attach bow to belt with snaps.





These special zippers come in various lengths. The zipper should be at least 2 cm (3/4 in) longer than the slit. It is sewn in place before the seam below the slit is stitched. A special presser foot is required to sew the zipper in place.

### **Sewing the zipper in place:**

Open the zipper and push the coil back with your thumbnail to reveal the seam marking between the tape and the coil. Place the open zipper right side down on the right fabric side of one slit edge.

In order to stitch the zipper in place exactly along the marked seam line, you must first calculate the distance between the tape edge and the fabric edge as follows: width of seam allowance minus 1 cm (3/8 in) tape width = distance from edge of fabric. This will yield a value of 5 mm (3/16 in) if the width of the seam allowance is 1.5 cm (5/8 in).

Pin the top end of the zipper tape in place, the calculated distance from the edge of the fabric. The bottom end of the zipper will extend past the marked end of the slit. Place the presser foot on the zipper so that the coil is in the notch to the right of the needle (1). Stitch zipper in place, from the top to the marked end of the slit. Close zipper.

Place the other zipper tape face down on the opposite slit edge and pin in place at the top. Open zipper again. Place the presser foot on the top end of the zipper so that the coil is in the notch to the left of the needle (2). Sew the zipper in place, from the top to the end of the slit. Close zipper.

Now stitch the seam below the zipper, from bottom to top. Turn the loose lower end of the zipper out of the way, over the seam allowance. Stitch as close as possible to the last stitches of the zipper seams. Trim away excess zipper and bind the end with a scrap of fabric.

## Additional Information:

**Burda patterns do not include seam and hem allowances.** We recommend adding 1-2 cm (3/8 - 3/4 inch) for seams and 2-5 cm (3/4 - 2 inch/es) for hems. Refer to your specific pattern instructions for exact measurements.

The fabric requirements are based on the fabric used for the original designs. These amounts will change if you use fabric of a different width. The pattern of the fabric determines whether all the pieces must be cut in the same direction or whether some can be reversed to save fabric.

The cutting layout printed with the instructions shows the best way to place the pattern pieces on our original fabric. Fold the fabric double with the right side facing in. The fabric then has a fold edge and a selvedge edge. When cutting from a single fabric layer, the right side should face up.

Pattern pieces which are shown in the cutting layout with broken outlines should be pinned to the fabric with their printed side facing down.

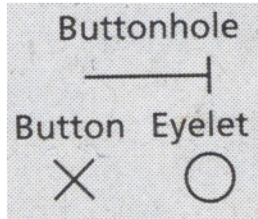
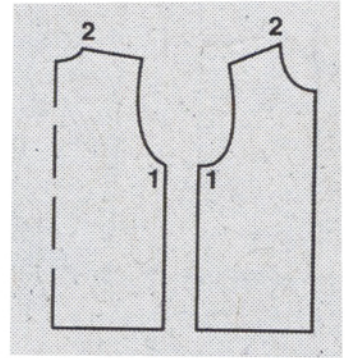
Grey shaded areas in the cutting layout indicate which pieces are to be interfaced.

Transfer the pattern piece lines to the wrong side of your fabric with burda dressmaker's carbon paper. Hand-baste along lines (e.g. for pockets or centre front) to make them visible on the right side of the fabric.

## Key Symbols:

### Seam numbers

show where pattern pieces must be sewn together. Match pieces with the same numbers.

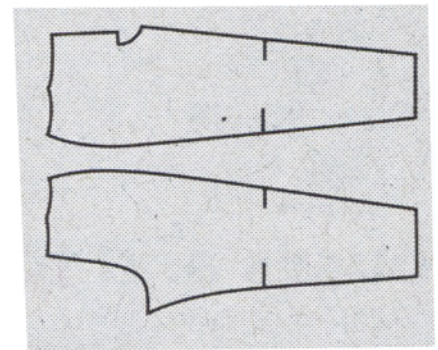


### Seam marks

on long seams. Match the small symbols to one another.



**Presser foot** is the symbol for seam and top-stitching lines.



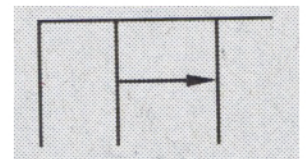
### Scissors

indicate edges to be cut without seam allowances and also slash lines, e.g. pocket openings.



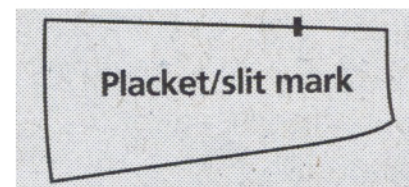
### Pleat symbol

Fold pleat in direction of arrow.



### Placket/slit mark

Indicates beginning/end of placket/slit.



**Gather**  
**Ease**  
**Stretch**

