

113 Dress

Burda sizes 72, 76, 80, 84, 88

Length from waist 119 cm (47 ins)

Materials

Chiffon,
width: 150 cm (59 in)
length: 12.10 – 12.10 – 12.20 – 12.30 – 12.40 m
(13 3/8 – 13 3/8 – 13 1/2 – 13 5/8 – 13 5/8 yds).

Crêpe de chine (underdress),
width: 150 cm
length: 3.50 m (3 7/8 yds) for all sizes.

Lining,
width: 140 cm (55 in)
length: 3.30 m (3 5/8 yds).

A piece of organza, 75 x 65 cm (30 x 26 ins).

Interfacing.

1 invisible zip, 40 cm (16 ins) long.

Recommended fabrics: Fine, sheer fabrics, combined with crêpe de chine.

Preparations

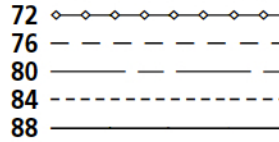
Print the pattern out on letter or A4 sized paper. It is **very important** to not scale the document. Your pattern will print on multiple pages, which you will then tile together. Arrange the sheets on a large, hard and flat surface matching up the numbers and letters (i.e. 6A to 6A). Cut or fold one of the sides and match the edge to its corresponding side. Then, tape down in place so paper is secure.

Trace the pattern pieces from the pattern sheet following the lines and markings for style 113 and your size.

burda style magazine patterns do not have seam allowance included.

Seam and hem allowance to be added:
Seams and edges 1.5 cm (5/8 in), hem 7 mm (1/4 in), draped scarf 7 mm (1/4 in).

Pattern Pieces 1-4



Follow the diagram (below right) to make a full-sized pattern piece for the skirt panel (a) as follows: On a large sheet of wrapping paper – the upper edge and the right edge must form a right angle – stretch a thread from the upper right corner to mark the radius (R) for the waist edge. Also mark the hem line (radius plus skirt length). Or measure the length of the skirt down from the waist edge at several points and then connect the points in an even curve to mark the edge of the hem. For the skirt lining panel, mark the seam line (on the bottom right) and cut the paper pattern piece apart on this line.

Cutting Out

Crêpe de chine:

1 front 1x

2 back 1x

a) skirt panel, on a fold 1x

Chiffon:

3 front draped piece 1x

4 back draped piece 1x

a) overskirt panel, on a fold 2x

Draft the following pieces:

b) draped scarf, 4.50 m (5 yds) long, 147 cm (58 ins) wide,

c) bias strip for fabric rose, 70 cm (28 ins) long, 10 cm (4 ins) wide.

Organza:

bias strip for fabric rose 70 cm (28 ins), 12 cm (4 3/4 ins) wide,
2 circles, each 16 cm (6 3/8 ins) in diameter.

Lining:

a) skirt panel, on a fold 1x
pieces 1 and 2.

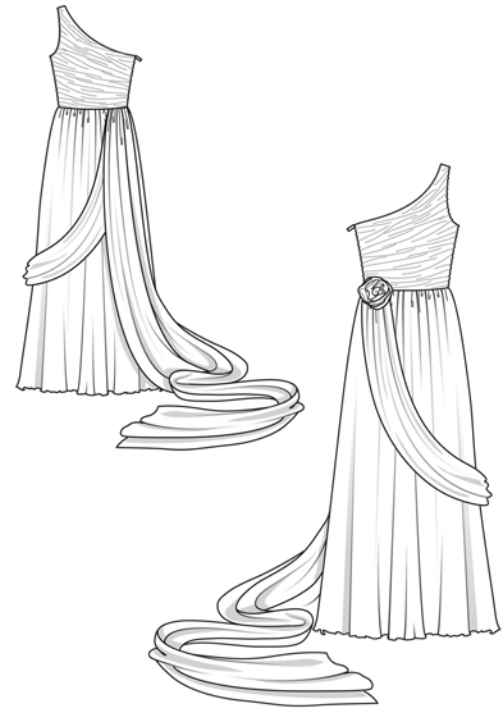
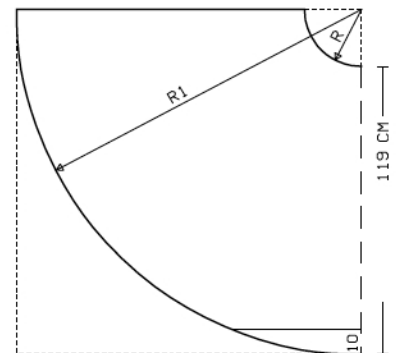


Diagram- Skirt Panel



Radius for waist edge (R)

size 72: 22.3 cm, size 76: 23.6 cm

size 80: 24.8 cm, size 84: 26.1 cm

size 88: 27.3 cm

Radius for hem edge (R 1)

size 72: 141.3 cm, size 76: 142.6 cm

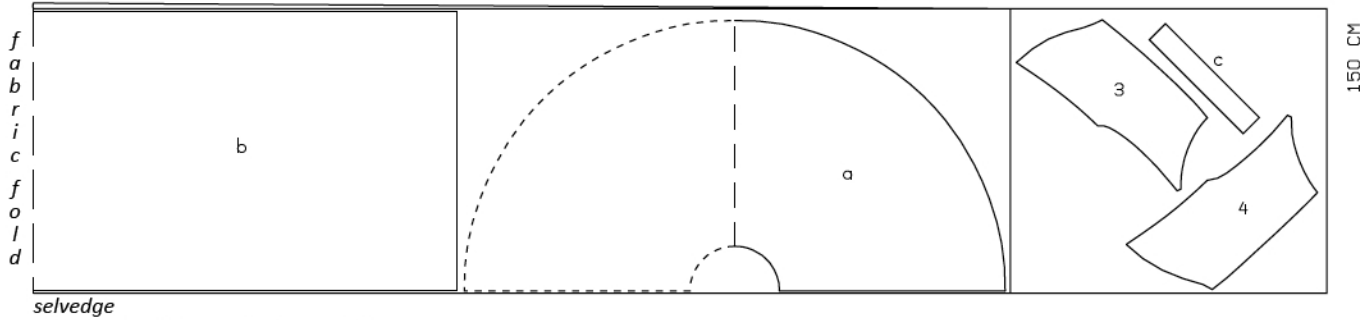
size 80: 143.8 cm, size 84: 145.1 cm

size 88: 146.3 cm

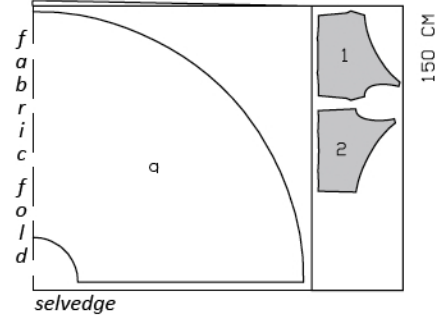
Interfacing: See shaded pieces cutting layout.

Cutting layouts on next page.

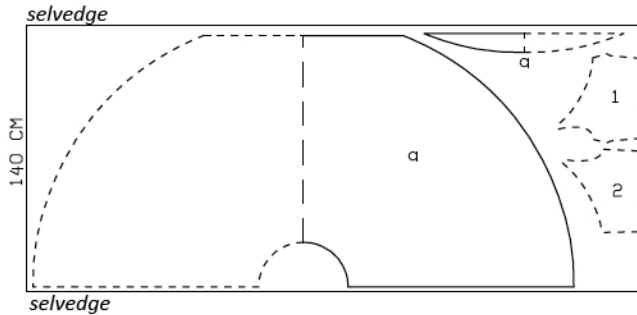
Chiffon, 150cm wide
selvedge



Crepe de Chine, 150cm wide
selvedge



Lining, 140cm wide



Fold the fabric as shown in the pattern layout. Right side faces in on a double layer of fabric. Right side faces up on a single layer. Cut the asymmetric pieces from a single layer of fabric, right side facing up. Cut the lining pieces as mirror images of the pieces of outer fabric.

Sewing

Stitch darts. Press vertical darts to centre. Press bust darts down.

Gather draped pieces and lay on corresponding front and back pieces, with wrong side facing right side. Pin edges together. Each bias-cut draped piece must lie taut over the fabric piece below it. Gather up the extra fabric by making folds in lower edge of draped pieces. Baste edges of draped pieces in place. Prevent the gathered folds from sagging by tacking them in place with small, invisible hand stitches, spaced about 8 cm (3 1/4 ins) apart.

Stitch left side seam on bodice.

Stitch left side seam on overskirt panels of chiffon. Trim seam allowances to 7 mm (1/4 in) wide, neaten together and press onto back. Gather upper edge of overskirt panel to match skirt panel (crêpe de chine). Lay on skirt panel, with wrong side facing right side, and baste to upper edge. Baste side edges together, 20 cm (8 ins) long, from the top and mark end of slit for zip.

Turn in allowances on long edges and one short edge of the draped scarf piece and stitch in place.

Gather open edge of scarf to 12 cm (4 3/4 ins) and stitch to upper edge of skirt panel, beginning at front side edge (seam line).

Stitch skirt to bodice. Lay seam allowances up.

Sew invisible zip to side edges, see the "Helpful Hint" on page 3. Begin at the marked upper edge. Stitch right side seam of skirt and overskirt each separately, clipping seam allowances of overskirt at end of slit.

Stitch side seam of skirt lining panel, leaving a slit, 22 ins (83/4 ins) long, at the top. Place skirt lining inside dress and sew to seam allowances of skirt joining seam, stitching as far as possible at slit. Sew skirt lining to zip tapes.

Stitch darts in bodice lining and stitch left side seam (as mirror image of outer fabric). Lay lining right sides together with bodice. Stitch together along upper edges and edges of armholes, leaving narrow shoulder edges open. Trim seam allowances. Lay lining up and stitch to seam allowances, as far as possible, close to seam. Lay lining to inside, turn in and sew to skirt joining seam and to zip tapes.

Stitch left shoulder seam. Spread shoulder seam allowances apart and sew to lining.

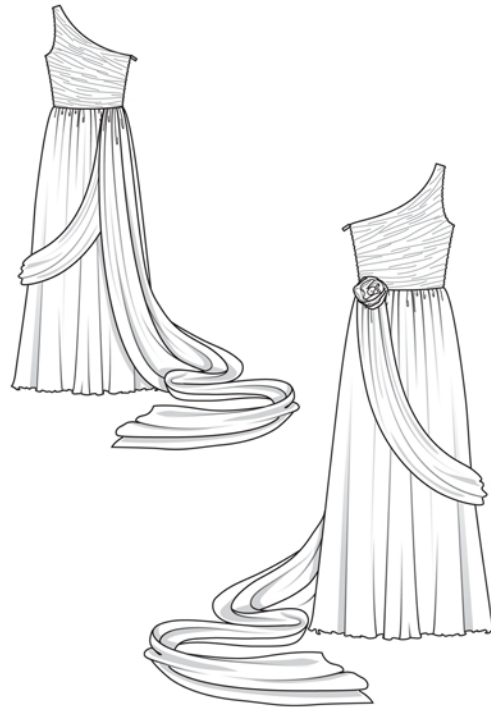
Turn in hem allowances and stitch narrow hem.

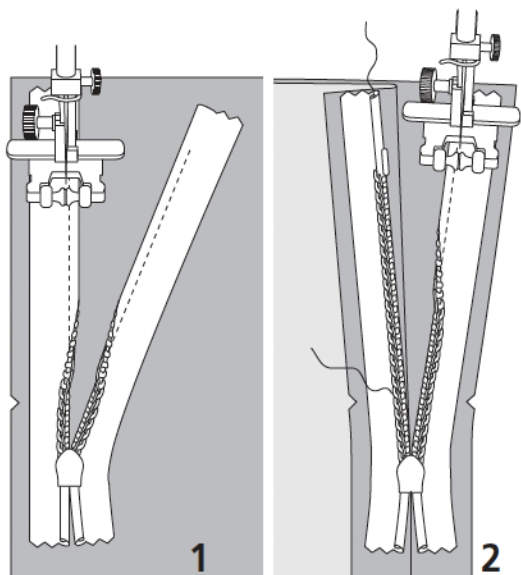
Loops for hanging: Cut two bias strips of lining fabric, each 50 cm (20 ins) long and 3 cm (1 1/4 ins) wide, to make loops for hanging. Sew narrow bands, 7 mm (1/4 in) wide. Form bands in loops and sew ends together to skirt joining seam, over side seams, on inside of dress.

Sewing Continued...

On draped scarf, measure 150 cm (59 ins) from joining seam. Gather sash here to a width of 10 cm (4 ins). Lay scarf around skirt to the back and pin gathered section to skirt joining seam, next to zip. Stitch as pinned.

Rose: Fold bias strips of chiffon and organza in half lengthwise. Trim one end of chiffon strip at a slant to a width of 4 cm (1 5/8 ins). Baste the lengthwise edges of the strips together and roll them up to form a rose. Begin with narrow end of chiffon strip for the centre of the flower and wrap the organza strip around the outside. Sew edges together tightly as you work. Cut the circles of organza in half. Make folds in the straight edges of these semi-circles and sew them beneath the rose, as leaves. Sew the finished rose to the skirt joining seam, over the scarf.





These special zippers come in various lengths. The zipper should be at least 2 cm (3/4 in) longer than the slit. It is sewn in place before the seam below the slit is stitched. A special presser foot is required to sew the zipper in place.

Sewing the zipper in place:

Open the zipper and push the coil back with your thumbnail to reveal the seam marking between the tape and the coil. Place the open zipper right side down on the right fabric side of one slit edge.

In order to stitch the zipper in place exactly along the marked seam line, you must first calculate the distance between the tape edge and the fabric edge as follows: width of seam allowance minus 1 cm (3/8 in) tape width = distance from edge of fabric. This will yield a value of 5 mm (3/16 in) if the width of the seam allowance is 1.5 cm (5/8 in).

Pin the top end of the zipper tape in place, the calculated distance from the edge of the fabric. The bottom end of the zipper will extend past the marked end of the slit. Place the presser foot on the zipper so that the coil is in the notch to the right of the needle (1). Stitch zipper in place, from the top to the marked end of the slit. Close zipper.

Place the other zipper tape face down on the opposite slit edge and pin in place at the top. Open zipper again. Place the presser foot on the top end of the zipper so that the coil is in the notch to the left of the needle (2). Sew the zipper in place, from the top to the end of the slit. Close zipper.

Now stitch the seam below the zipper, from bottom to top. Turn the loose lower end of the zipper out of the way, over the seam allowance. Stitch as close as possible to the last stitches of the zipper seams. Trim away excess zipper and bind the end with a scrap of fabric.

Additional Information:

Burda patterns do not include seam and hem allowances. We recommend adding 1-2 cm (3/8 - 3/4 inch) for seams and 2-5 cm (3/4 - 2 inch/es) for hems. Refer to your specific pattern instructions for exact measurements.

The fabric requirements are based on the fabric used for the original designs. These amounts will change if you use fabric of a different width. The pattern of the fabric determines whether all the pieces must be cut in the same direction or whether some can be reversed to save fabric.

The cutting layout printed with the instructions shows the best way to place the pattern pieces on our original fabric. Fold the fabric double with the right side facing in. The fabric then has a fold edge and a selvedge edge. When cutting from a single fabric layer, the right side should face up.

Pattern pieces which are shown in the cutting layout with broken outlines should be pinned to the fabric with their printed side facing down.

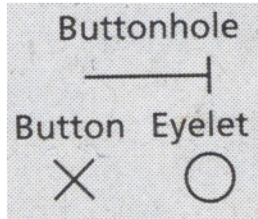
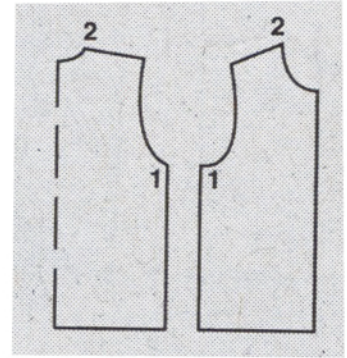
Grey shaded areas in the cutting layout indicate which pieces are to be interfaced.

Transfer the pattern piece lines to the wrong side of your fabric with burda dressmaker's carbon paper. Hand-baste along lines (e.g. for pockets or centre front) to make them visible on the right side of the fabric.

Key Symbols:

Seam numbers

show where pattern pieces must be sewn together. Match pieces with the same numbers.

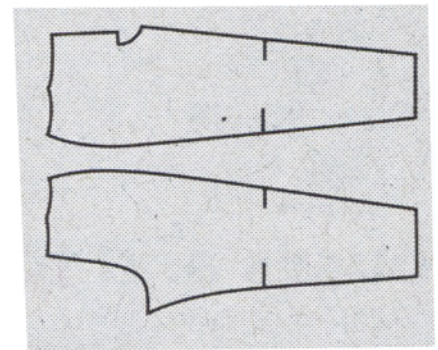


Seam marks

on long seams. Match the small symbols to one another.



Presser foot is the symbol for seam and top-stitching lines.



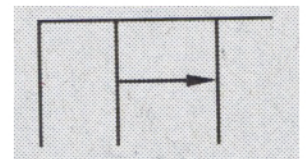
Scissors

indicate edges to be cut without seam allowances and also slash lines, e.g. pocket openings.



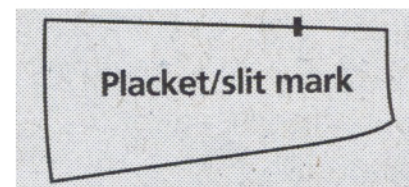
Pleat symbol

Fold pleat in direction of arrow.



Placket/slit mark

Indicates beginning/end of placket/slit.



Gather
Ease
Stretch

