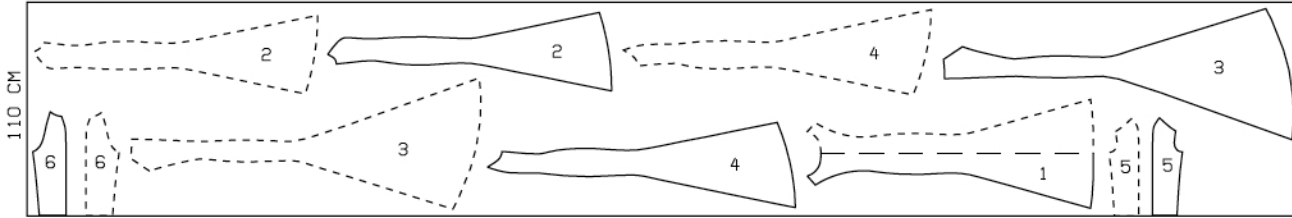




### Tulle Lace, 110cm wide

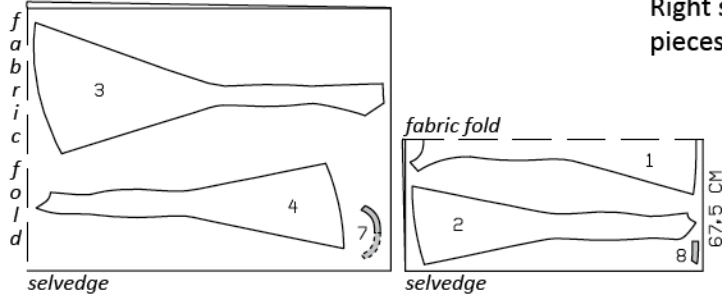
scalloped edge



scalloped edge

### Crepe Satin, 135cm wide

selvedge



Right side faces up on a single layer of fabric. Cut right and left pieces as opposites! Right side faces in on a double layer of fabric.

## Sewing

Sew front and back section seams and side seams as French seams (double seams): First lay the fabric pieces wrong sides facing and stitch the seam allowances together, 4 mm (a good 1/8 in) wide. Press seam allowances open. Then lay the pieces right sides facing and stitch the seam 6 mm (1/4 in) wide, with the first seam exactly along the fold. Press seam allowances to one side.

Stitch front and back section seams and side seams on pieces of crêpe satin. Press seam allowances open.

Lay back and front pieces of lace fabric on corresponding satin pieces, with wrong side facing right side. Baste together along neck and armhole edges. Baste back edges together to marked end of opening.

Sew invisible zip to back opening edges, see the "Helpful Hint" on next page. Clip seam allowances of lace fabric at end of opening. Stitch centre back seams on lace (French seam) and satin each separately, stitching each from lower edge to zip opening.

Stitch seams of lining. Leave opening for zip 2 cm (3/4 in) longer than marked. Place lining inside dress with wrong sides facing. Baste lining to zip tapes and to neck and armhole edges.

Pin neck facings right sides together with neck edges of back and front pieces. Stitch along edges. Trim seam allowances. Lay facings up and stitch to seam allowances, close to seam. Turn facings to inside. Press edges. Turn in facings, sew to zip tapes and baste to armhole edges.

Stitch top sleeve seams and underneath sleeve seams as French seams.

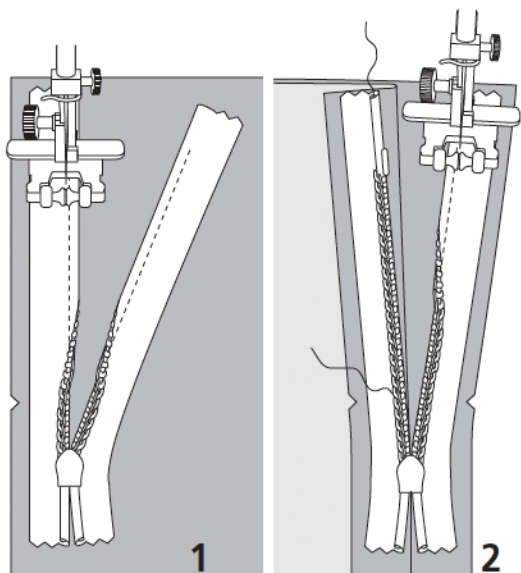
Stitch sleeves to edges of armholes, leaving allowance at upper edges of sleeves extending. Trim allowances of sleeve joining seams to 7 mm (1/4 in) wide, neaten and press toward sleeves. Do not press allowances flat along underarm curves.

Face upper edges of sleeves with bias tape: Unfold one edge of pre-folded tape and trim away, to the fold. Pin cut edge of tape to upper edge of sleeve and turn in ends of tape. Stitch bias tape to seam line of sleeves, 1 cm (3/8 in) from edge. Trim allowances. Turn bias tape to inside and sew in place by hand.

Face edge of hem with bias tape as for sleeves. Begin stitching tape at one side seam. Turn in beginning end and lay end of bias tape over beginning end, not turning it under.

Press hem allowance of satin dress to inside and sew in place by hand. Turn in hem allowance of lining and stitch so that lining is 2 cm (3/4 in) shorter than the satin dress.

Cut two strips of lining fabric, each 15 cm (6 in) long and 3 cm (1 1/4 ins) wide to make loops for hanging. Sew to 7 mm (1/4 in) wide bands. Form bands in loops. Sew ends together to seam allowances of sleeve joining seams, at tops of side seams, on inside of dress.



These special zippers come in various lengths. The zipper should be at least 2 cm (3/4 in) longer than the slit. It is sewn in place before the seam below the slit is stitched. A special presser foot is required to sew the zipper in place.

### **Sewing the zipper in place:**

Open the zipper and push the coil back with your thumbnail to reveal the seam marking between the tape and the coil. Place the open zipper right side down on the right fabric side of one slit edge.

In order to stitch the zipper in place exactly along the marked seam line, you must first calculate the distance between the tape edge and the fabric edge as follows: width of seam allowance minus 1 cm (3/8 in) tape width = distance from edge of fabric. This will yield a value of 5 mm (3/16 in) if the width of the seam allowance is 1.5 cm (5/8 in).

Pin the top end of the zipper tape in place, the calculated distance from the edge of the fabric. The bottom end of the zipper will extend past the marked end of the slit. Place the presser foot on the zipper so that the coil is in the notch to the right of the needle (1). Stitch zipper in place, from the top to the marked end of the slit. Close zipper.

Place the other zipper tape face down on the opposite slit edge and pin in place at the top. Open zipper again. Place the presser foot on the top end of the zipper so that the coil is in the notch to the left of the needle (2). Sew the zipper in place, from the top to the end of the slit. Close zipper.

Now stitch the seam below the zipper, from bottom to top. Turn the loose lower end of the zipper out of the way, over the seam allowance. Stitch as close as possible to the last stitches of the zipper seams. Trim away excess zipper and bind the end with a scrap of fabric.

## Additional Information:

**Burda patterns do not include seam and hem allowances.** We recommend adding 1-2 cm (3/8 - 3/4 inch) for seams and 2-5 cm (3/4 - 2 inch/es) for hems. Refer to your specific pattern instructions for exact measurements.

The fabric requirements are based on the fabric used for the original designs. These amounts will change if you use fabric of a different width. The pattern of the fabric determines whether all the pieces must be cut in the same direction or whether some can be reversed to save fabric.

The cutting layout printed with the instructions shows the best way to place the pattern pieces on our original fabric. Fold the fabric double with the right side facing in. The fabric then has a fold edge and a selvedge edge. When cutting from a single fabric layer, the right side should face up.

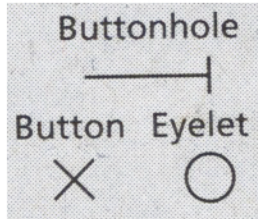
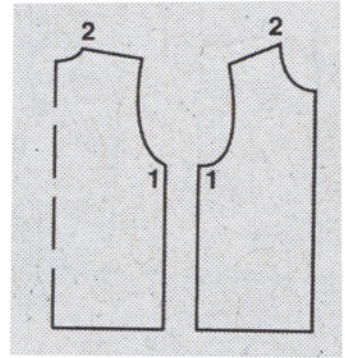
Pattern pieces which are shown in the cutting layout with broken outlines should be pinned to the fabric with their printed side facing down.

Grey shaded areas in the cutting layout indicate which pieces are to be interfaced.

Transfer the pattern piece lines to the wrong side of your fabric with burda dressmaker's carbon paper. Hand-baste along lines (e.g. for pockets or centre front) to make them visible on the right side of the fabric.

## Key Symbols:

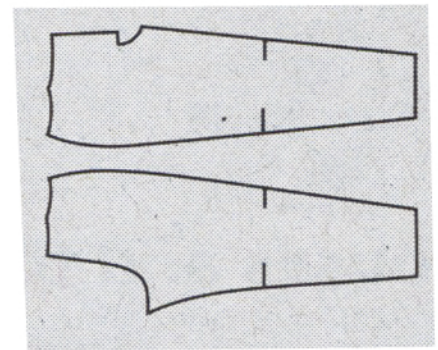
**Seam numbers**  
show where pattern pieces must be sewn together. Match pieces with the same numbers.



**Seam marks**  
on long seams. Match the small symbols to one another.



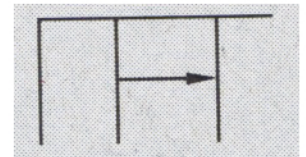
**Presser foot**  
is the symbol for seam and top-stitching lines.



**Scissors**  
indicate edges to be cut without seam allowances and also slash lines, e.g. pocket openings.



**Pleat symbol**  
Fold pleat in direction of arrow.



**Placket/slit mark**  
Indicates beginning/end of placket/slit.

