

115 Dress

Burda sizes 17, 18, 19, 20, 21

Length from waist 110 cm (43 1/2 ins)

Materials

Duchesse,
width: 140 cm (55 in)
length: 3.10 – 3.10 – 3.15–3.20–3.20m (3 1/2 yds).

Organza as contrasting fabric,
width: 140 cm (55 in)
length: 3.10 m (3 1/2 yds) for all sizes.

Lining,
width: 140 cm (55 in)
length: 2.80 m (3 1/8 yds).

Interfacing.

1 invisible zip, 60 cm (24 ins) long.

Recommended fabrics: Duchesse.

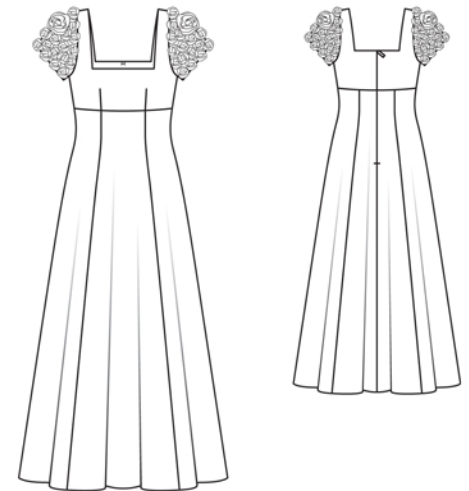
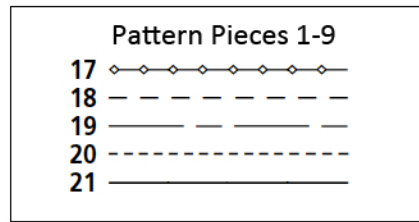
Preparations

Print the pattern out on letter or A4 sized paper. It is **very important** to not scale the document. Your pattern will print on multiple pages, which you will then tile together. Arrange the sheets on a large, hard and flat surface matching up the numbers and letters (i.e. 6A to 6A). Cut or fold one of the sides and match the edge to it's corresponding side. Then, tape down in place so paper is secure.

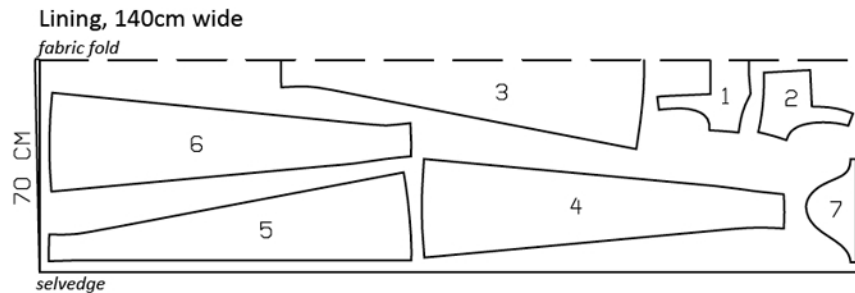
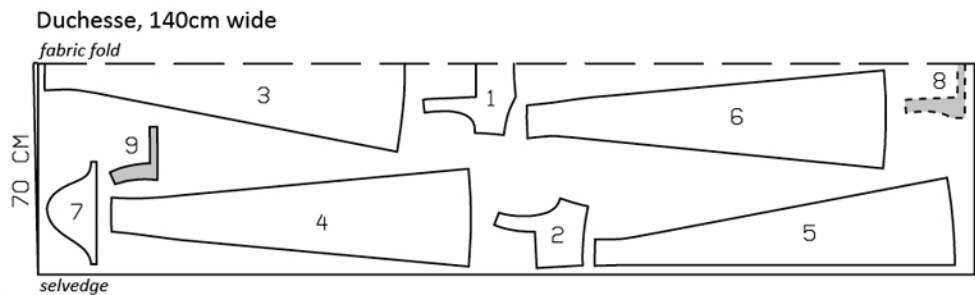
Trace the pattern pieces from the pattern sheet following the lines and markings for style 115 and your size.

burda style magazine patterns do not have seam allowance included.

Seam and hem allowance to be added:
Seams and edges 1.5 cm (5/8 in), hem 3 cm (1 1/4 ins).



Cut from a double layer of fabric, right side facing in.



Cutting Out

Dress

Duchesse:

- 1 front, on a fold 1x
- 2 back 2x
- 3 centre front skirt panel, on a fold 1x
- 4 side front skirt panel 2x
- 5 centre back skirt panel 2x
- 6 side back skirt panel 2x
- 7 sleeve 2x
- 8 front neck facing, on a fold 1x
- 9 back neck facing 2x

Fabric flowers

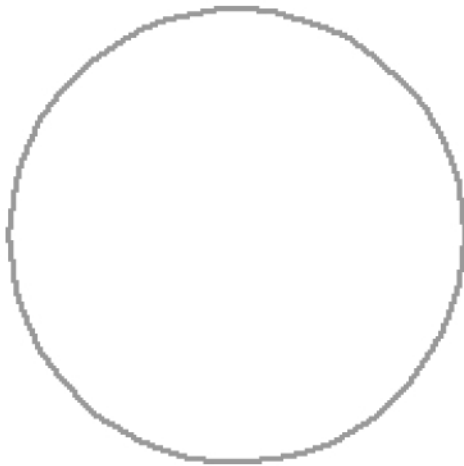
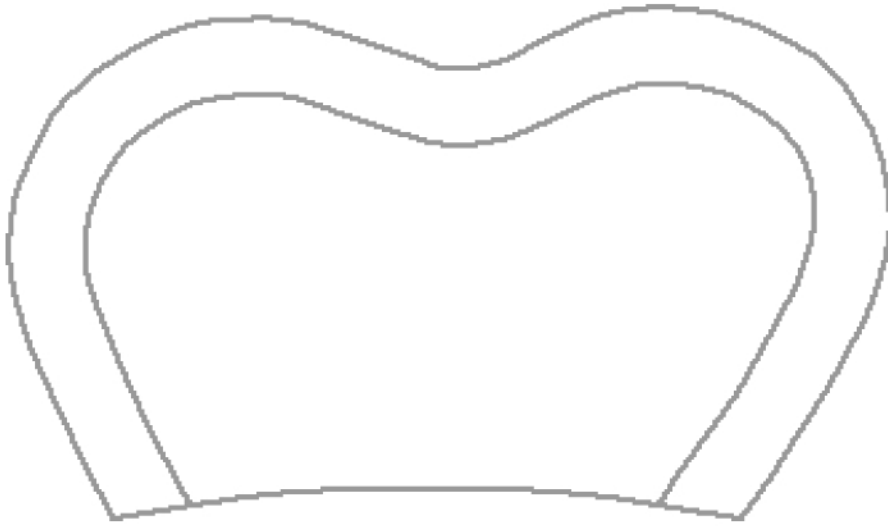
Organza (contrasting fabric):

- 2 large roses: for each rose, cut bias strips, one each 70 cm (28 ins), 55 cm (22 ins) and 35 cm (14 ins) long, all 10 cm (4 ins) wide (incl. allowance).
- 52 small roses: for each rose, cut 3 large petals, 3 small petals, and one circle for the flower centre, without allowances, see diagram.

The full-size outlines are on next page.

Lining: pieces 1 bis 7.

Interfacing: Iron on facings.



Sewing

Stitch bust darts and press toward centre. Stitch section seams on front and back skirt panels. Press seam allowances open.

Stitch front skirt panel to front and stitch back skirt panels to back pieces. Press seam allowances open.

Sew invisible zip to back edges, see the "Helpful Hint" on next page. Stitch centre back seam from lower edge to zip.

Stitch side seams, shoulder seams and facing seams.

Stitch darts and seams on lining. Place lining inside dress, with wrong side facing, and sew to zip tapes. Baste lining to neck and armhole edges.

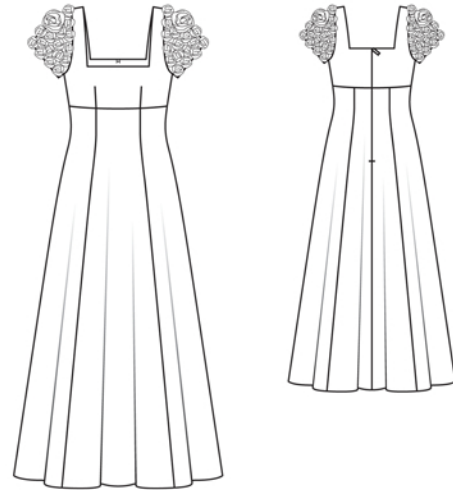
Pin neck facing right sides together with neck edge. Stitch along neck edge. Trim seam allowances, trimming corners diagonally. Lay facing up and stitch to seam allowances, close to seam, interrupting stitching at each corner. Turn facing to inside and baste to edges of armholes. Turn in narrow back edges of facing and sew to zip tapes.

Stitch seams on sleeves and sleeve linings. Lay sleeve linings right sides together with duchesse sleeves. Stitch lower edges together. Lay lining down and stitch to seam allowances, close to seam. Turn lining to inside. Baste open sleeve edges together.

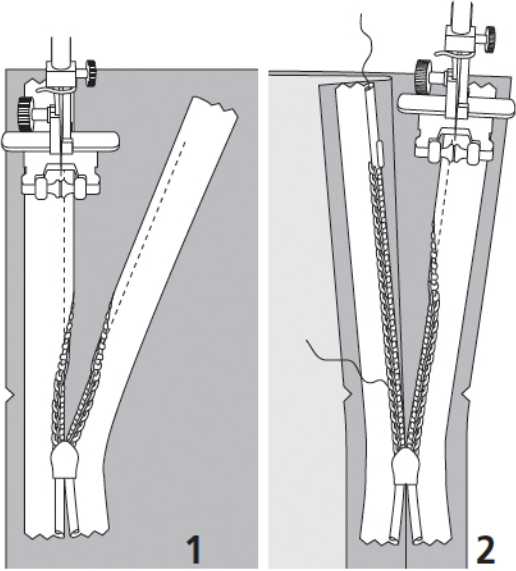
Set in sleeves, easing sleeve caps.

Press hem allowance to inside and sew in place by hand. Turn in lining hem allowance and stitch in place.

Large roses: Fold fabric strips in half lengthwise. Round off ends, toward the fold. Baste lengthwise edges together and gather. Then roll up to form roses, beginning with the shortest strip and ending with the longest. Sew edges together tightly as you go. Sew one large rose, centred, to each sleeve.



Small roses: For the flower centre, fold the outer edges of the fabric circle together closely, wrap with a piece of thread, and knot. Now first lay the smaller petals around the centre and then the larger petals, making folds in lower edge of petals and sewing them in place. Sew small roses to sleeves, close together.



These special zippers come in various lengths. The zipper should be at least 2 cm (3/4 in) longer than the slit. It is sewn in place before the seam below the slit is stitched. A special presser foot is required to sew the zipper in place.

Sewing the zipper in place:

Open the zipper and push the coil back with your thumbnail to reveal the seam marking between the tape and the coil. Place the open zipper right side down on the right fabric side of one slit edge.

In order to stitch the zipper in place exactly along the marked seam line, you must first calculate the distance between the tape edge and the fabric edge as follows: width of seam allowance minus 1 cm (3/8 in) tape width = distance from edge of fabric. This will yield a value of 5 mm (3/16 in) if the width of the seam allowance is 1.5 cm (5/8 in).

Pin the top end of the zipper tape in place, the calculated distance from the edge of the fabric. The bottom end of the zipper will extend past the marked end of the slit. Place the presser foot on the zipper so that the coil is in the notch to the right of the needle (1). Stitch zipper in place, from the top to the marked end of the slit. Close zipper.

Place the other zipper tape face down on the opposite slit edge and pin in place at the top. Open zipper again. Place the presser foot on the top end of the zipper so that the coil is in the notch to the left of the needle (2). Sew the zipper in place, from the top to the end of the slit. Close zipper.

Now stitch the seam below the zipper, from bottom to top. Turn the loose lower end of the zipper out of the way, over the seam allowance. Stitch as close as possible to the last stitches of the zipper seams. Trim away excess zipper and bind the end with a scrap of fabric.

Additional Information:

Burda patterns do not include seam and hem allowances. We recommend adding 1-2 cm (3/8 - 3/4 inch) for seams and 2-5 cm (3/4 - 2 inch/es) for hems. Refer to your specific pattern instructions for exact measurements.

The fabric requirements are based on the fabric used for the original designs. These amounts will change if you use fabric of a different width. The pattern of the fabric determines whether all the pieces must be cut in the same direction or whether some can be reversed to save fabric.

The cutting layout printed with the instructions shows the best way to place the pattern pieces on our original fabric. Fold the fabric double with the right side facing in. The fabric then has a fold edge and a selvedge edge. When cutting from a single fabric layer, the right side should face up.

Pattern pieces which are shown in the cutting layout with broken outlines should be pinned to the fabric with their printed side facing down.

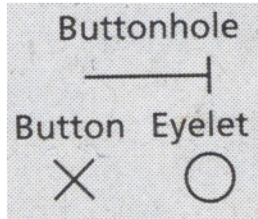
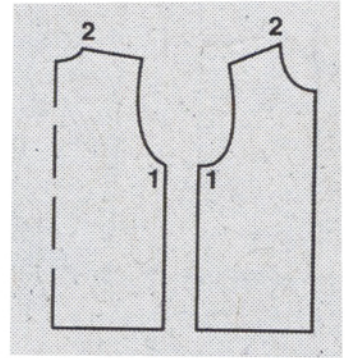
Grey shaded areas in the cutting layout indicate which pieces are to be interfaced.

Transfer the pattern piece lines to the wrong side of your fabric with burda dressmaker's carbon paper. Hand-baste along lines (e.g. for pockets or centre front) to make them visible on the right side of the fabric.

Key Symbols:

Seam numbers

show where pattern pieces must be sewn together. Match pieces with the same numbers.

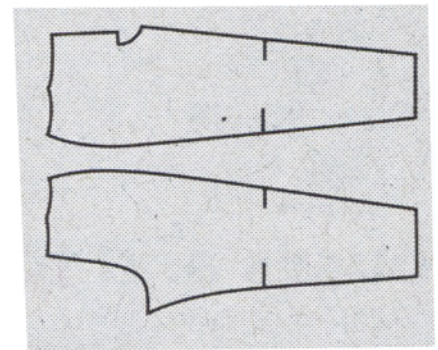


Seam marks

on long seams. Match the small symbols to one another.



Presser foot is the symbol for seam and top-stitching lines.



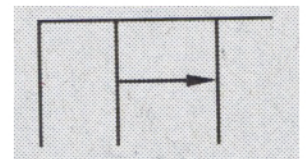
Scissors

indicate edges to be cut without seam allowances and also slash lines, e.g. pocket openings.



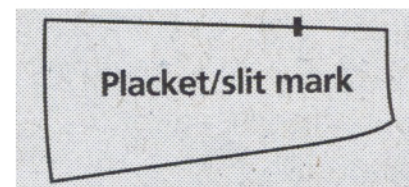
Pleat symbol

Fold pleat in direction of arrow.



Placket/slit mark

Indicates beginning/end of placket/slit.



Gather
Ease
Stretch

