

### 117 Dress

Burda sizes 34, 36, 38, 40, 42

Length from waist 114 cm (45 ins)

### Materials

Duchesse,  
width: 145 cm (57 in)  
length: 4.05 m (4 1/2 yds) for all sizes.

Organza,  
width: 140 cm (55 in)  
length: 4.05 m (4 1/2 yds).

Lining,  
width: 140 cm (55 in)  
length: 3.85 m (4 1/4 yds).

Interfacing.

Boning tape, 8 mm (1/4 in) wide and 1.25 m (1 1/2 yds) long.

1 invisible zip, 40 cm (16 ins) long.

115 organza flowers to sew on, each about 10 cm (4 ins) in size.

Recommended fabrics: Duchesse, combined with organza.

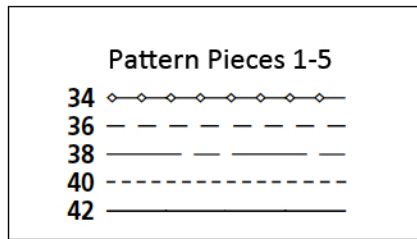
### Preparations

Print the pattern out on letter or A4 sized paper. It is **very important** to not scale the document. Your pattern will print on multiple pages, which you will then tile together. Arrange the sheets on a large, hard and flat surface matching up the numbers and letters (i.e. 6A to 6A). Cut or fold one of the sides and match the edge to it's corresponding side. Then, tape down in place so paper is secure.

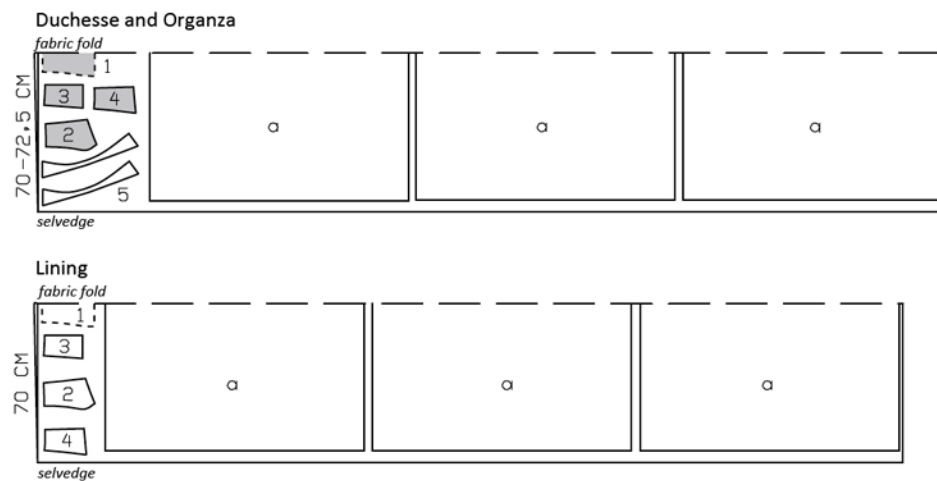
Trace the pattern pieces from the pattern sheet following the lines and markings for style 117 and your size.

**burda style magazine patterns do not have seam allowance included.**

Seam and hem allowance to be added:  
Seams, edges and hem 1.5 cm (5/8 in).



Cut from a double layer of fabric, right side facing in.



### Cutting Out

Duchesse/organza:

- 1 centre front, on a fold 1x
- 2 side front 2x
- 3 centre back 2x
- 4 side back 2x
- 5 strap 4x

Draft the following piece NOT included in the pattern:

- a) 3 skirt panels, 130 cm (51 1/4 ins) wide, 114 cm (45 ins) long.

Lining: pieces 1 to 4 and piece a.

Interfacing: See shaded pieces in pattern layout. Interface the duchesse pieces.

## Sewing

Baste fronts, backs and strap pieces of organza to corresponding pieces of duchesse, with wrong side facing right side. Treat these pieces as one layer of fabric from now on.

Stitch front and back section seams on bodice and stitch side seams. Press seam allowances open.

Cut pieces of boning for section seams and side seams each 6 mm (a scant 1/4 in) shorter than respective seams (= finished length without allowances) and round off ends slightly. Stitch boning to pressed-open seam allowances, beginning 3 mm (1/8 in) below upper seam line.

Stitch skirt panels of duchesse together to one long panel. Press seam allowances open.

Stitch seams on skirt panels of organza as French seams (double seam) as follows: First lay the pattern pieces together with wrong sides facing and stitch seam allowances together, 7 mm (1/4 in) from edge. Press seam allowances open. Then lay pieces right sides together and stitch seam 8 mm (a good 1/4 in) wide – the first seam lies along the fold. Press seam allowances to one side.

Lay organza skirt on duchesse skirt, with wrong side facing right side, and baste upper edges together. Measure and mark 20 cm (8 ins) down from upper back edge of skirt panels, for the zip. Baste opening edges together as far as marking.

Mark centre front at upper edge of front skirt panel. Make a fold, 30 cm (12 ins) deep, 17 cm (6 3/4 ins) to each side of centre front and centre back and baste to upper edge of skirt panel.

Gather upper edge of skirt panel to fit lower edge of bodice. Stitch skirt to bodice. Press seam allowances up.

Sew invisible zip to back opening edges, see "Helpful Hint" on next page. Clip seam allowances of organza at end of opening. Stitch centre back seams of organza (French seam) and of duchesse as separate seams. Stitch each



seam from lower edge to zip opening.

Stitch seams of skirt lining, leaving slit open for zip. Fold pleats in upper edge of skirt panel, then gather upper edge of skirt panel. Place skirt lining inside dress, with wrong sides facing, and stitch to seam allowances of skirt joining seam, stitching as far as possible at slit. Sew skirt lining to zip tapes.

Lay two strap pieces each right sides facing and stitch lengthwise edges together. Turn straps right side out. Baste straps to upper front edge between markings (seam number 4).

Stitch seams of bodice lining. Pin lining right sides together with upper edge of bodice. Turn lining back at zip opening, about 5 mm (3/16 in) before edge, and pin to upper edge. Lay allowances at opening edges of dress outward and pin to upper edge, over lining. Stitch along upper edge, leaving openings for straps in back. Turn lining and allowances at opening edges to inside.

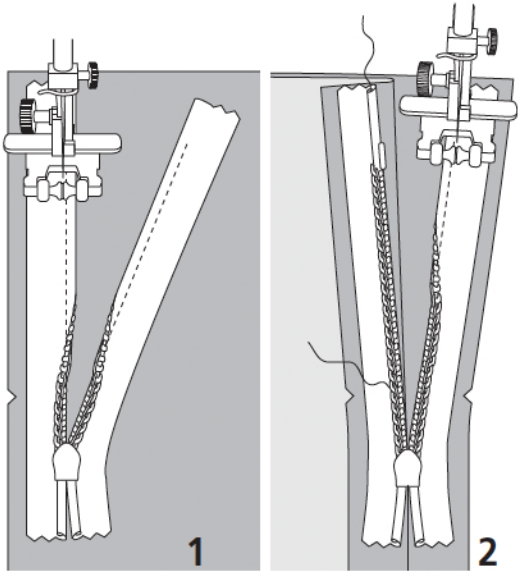
Slip back ends of straps into openings in seam on upper back edge and pin straps in place. Try on garment to determine correct strap length. Then reach between outer fabric and lining to pull out upper edge again. Stitch seam openings closed, catching strap ends.

Turn in lining and sew to zip tapes and to skirt joining seam.

Turn in hem allowance (organza and duchesse) and stitch. Hem lining so that it is about 2 cm (3/4 in) shorter than dress.

Loops for hanging: Cut two bias strips of lining fabric, each 50 cm (20 ins) long and 3 cm (1 1/4 ins) wide, to make loops for hanging. Sew narrow bands, 7 mm (1/4 in) wide. Form bands in loops and sew ends together to skirt joining seam, over side seams, on inside of dress.

Arrange organza flowers on dress as desired and sew in place by hand.



These special zippers come in various lengths. The zipper should be at least 2 cm (3/4 in) longer than the slit. It is sewn in place before the seam below the slit is stitched. A special presser foot is required to sew the zipper in place.

### **Sewing the zipper in place:**

Open the zipper and push the coil back with your thumbnail to reveal the seam marking between the tape and the coil. Place the open zipper right side down on the right fabric side of one slit edge.

In order to stitch the zipper in place exactly along the marked seam line, you must first calculate the distance between the tape edge and the fabric edge as follows: width of seam allowance minus 1 cm (3/8 in) tape width = distance from edge of fabric. This will yield a value of 5 mm (3/16 in) if the width of the seam allowance is 1.5 cm (5/8 in).

Pin the top end of the zipper tape in place, the calculated distance from the edge of the fabric. The bottom end of the zipper will extend past the marked end of the slit. Place the presser foot on the zipper so that the coil is in the notch to the right of the needle (1). Stitch zipper in place, from the top to the marked end of the slit. Close zipper.

Place the other zipper tape face down on the opposite slit edge and pin in place at the top. Open zipper again. Place the presser foot on the top end of the zipper so that the coil is in the notch to the left of the needle (2). Sew the zipper in place, from the top to the end of the slit. Close zipper.

Now stitch the seam below the zipper, from bottom to top. Turn the loose lower end of the zipper out of the way, over the seam allowance. Stitch as close as possible to the last stitches of the zipper seams. Trim away excess zipper and bind the end with a scrap of fabric.

## Additional Information:

**Burda patterns do not include seam and hem allowances.** We recommend adding 1-2 cm (3/8 - 3/4 inch) for seams and 2-5 cm (3/4 - 2 inch/es) for hems. Refer to your specific pattern instructions for exact measurements.

The fabric requirements are based on the fabric used for the original designs. These amounts will change if you use fabric of a different width. The pattern of the fabric determines whether all the pieces must be cut in the same direction or whether some can be reversed to save fabric.

The cutting layout printed with the instructions shows the best way to place the pattern pieces on our original fabric. Fold the fabric double with the right side facing in. The fabric then has a fold edge and a selvedge edge. When cutting from a single fabric layer, the right side should face up.

Pattern pieces which are shown in the cutting layout with broken outlines should be pinned to the fabric with their printed side facing down.

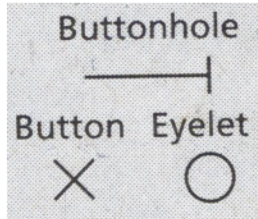
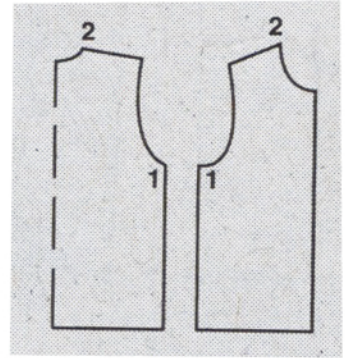
Grey shaded areas in the cutting layout indicate which pieces are to be interfaced.

Transfer the pattern piece lines to the wrong side of your fabric with burda dressmaker's carbon paper. Hand-baste along lines (e.g. for pockets or centre front) to make them visible on the right side of the fabric.

## Key Symbols:

### Seam numbers

show where pattern pieces must be sewn together. Match pieces with the same numbers.

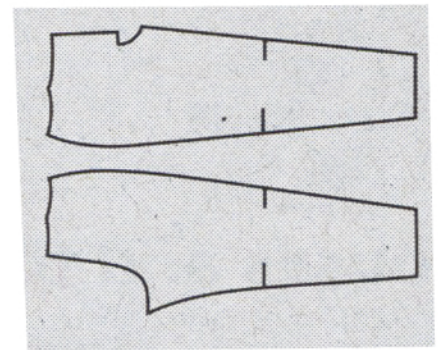


### Seam marks

on long seams. Match the small symbols to one another.



**Presser foot** is the symbol for seam and top-stitching lines.



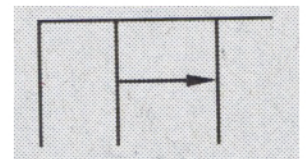
### Scissors

indicate edges to be cut without seam allowances and also slash lines, e.g. pocket openings.



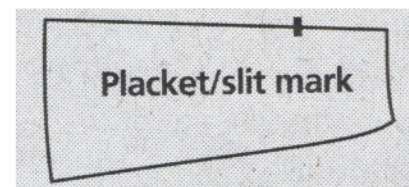
### Pleat symbol

Fold pleat in direction of arrow.



### Placket/slit mark

Indicates beginning/ end of placket/slit.



**Gather**  
**Ease**  
**Stretch**

