

104 Dress

Burda sizes 36, 38, 40, 42, 44

Length from waist 112 cm (44 1/4 ins)

Materials

Batiste print,
width: 135 cm (53 ins)
length: 3.45 m (3 7/8 yds) for all sizes.

Shirring elastic.

Recommended fabrics: Lightweight dress fabrics.

Preparations

Print the pattern out on letter or A4 sized paper. It is **very important** to not scale the document. Your pattern will print on multiple pages, which you will then tile together. Arrange the sheets on a large, hard and flat surface matching up the numbers and letters (i.e. 6A to 6A). Cut or fold one of the sides and match the edge to its corresponding side. Then, tape down in place so paper is secure.

Trace the pattern pieces from the pattern sheet following the lines and markings for style 104 and your size.

burda style magazine patterns do not have seam allowance included.

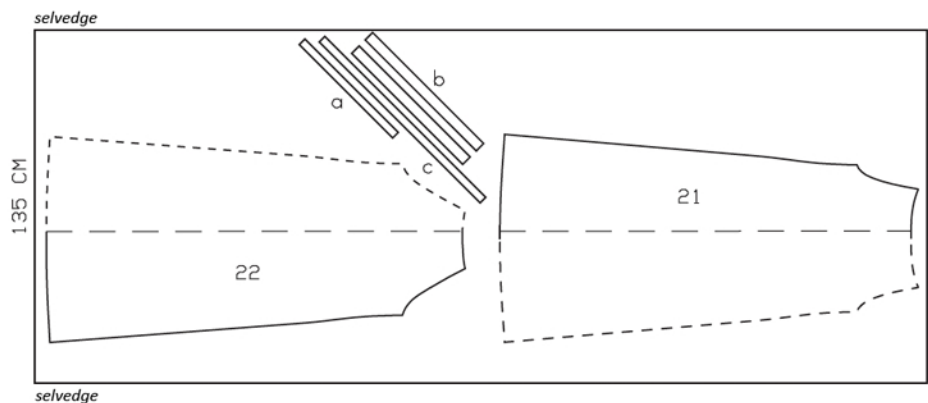
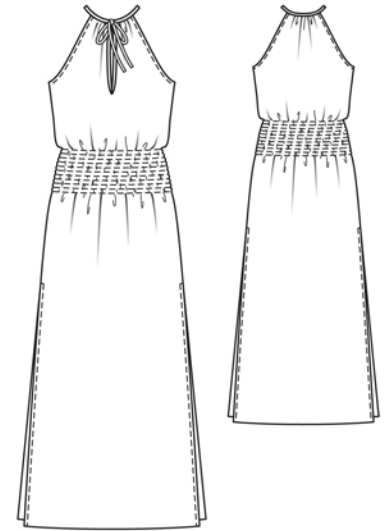
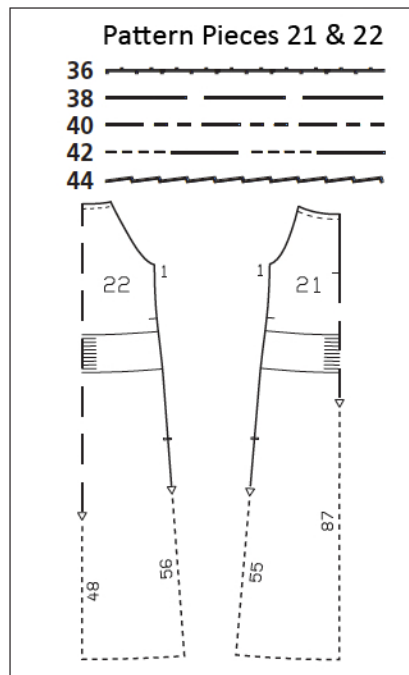
Seam and hem allowance to be added:
Seams, edges and hem 1.5 cm (5/8 in), no allowance at neck edges.

Cutting Out

21 front, on a fold 1x
22 back, on a fold 1x

Draft the following pieces NOT included:

- a) bias binding strip for front slit, 44 – 46 – 47 – 49 – 51 cm (17 1/4 – 18 1/8 – 18 1/2 – 19 1/4 – 20 1/4 ins) long, 3 cm (1 1/4 ins) wide (incl. allowances),
- b) 2 bias strips for armholes, 53 – 55 – 57 – 58 – 60 cm (21 – 21 3/4 – 22 1/2 – 23 – 23 3/4 ins) long, 4 cm (1 5/8 ins) wide (incl. allowances),
- c) bias strip for neck edge, straps, and tie bands, 85 – 85 – 90 – 90 – 90 cm (33 – 33 – 35 1/2 – 35 1/2 – 35 1/2 ins) long, 3 cm (1 1/4 ins) wide (incl. allowances).



Cut from a single layer of fabric, right side facing up. When using the original fabric, make sure that the lengthwise border lies along centre of front and back.

Sewing

Slash slit at centre front, down to the seam mark. Spread cut edges open to a straight line and, beginning at upper edge, stitch to binding strip, stitching 7 mm (1/4 in) from edge. Taper stitching toward end of slit. Press binding strip over attachment seam into slit then fold to a width of 7 mm (1/4 in). Turn inside edge under and sew to attachment seam on inside. Topstitch binding close to edge.

Shirring: Use tailor's chalk to mark the shirring lines on wrong fabric side of front and back. Lay shirring elastic flat along each chalk line and stitch over it at a zigzag setting. Stitch width should be just wide enough to not catch the elastic, otherwise the elastic cannot be pulled to shirr the fabric. Begin and end on the side edges, exactly at the marked seam lines – do not stitch across the seam allowances. When all rows have been stitched, pull the pieces of elastics to shirr the fabric: on front and back, top line of

Sewing Continued...

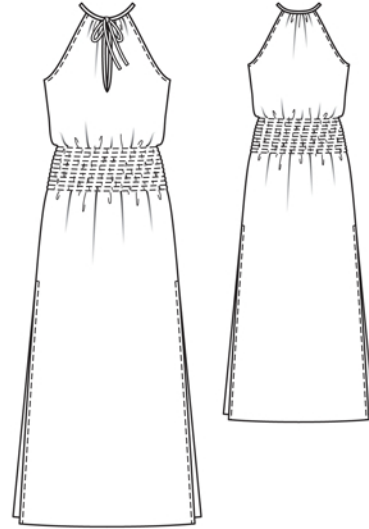
elastic to a width of 26 – 28 – 30 – 32 – 34 cm (10 1/4 – 11 1/8 – 12 – 12 3/4 – 13 1/2 ins), bottom line to 30 – 32 – 34 – 36 – 38 cm (12 – 12 3/4 – 13 1/2 – 14 1/4 – 15 ins), and graduate shirring evenly in between. Knot ends of elastic securely or stitch the ends to conceal them.

Stitch side seams, leaving slits open. Press seam allowances open.

Armholes: Fold bias strips in half lengthwise and press, right side facing out. Stitch folded bias strips to armhole edges so that fold edge of each strip lies on garment piece, 1 cm (3/8 in) past seam line. Trim seam allowances. Turn strip to inside. Topstitch 7 mm (1/4 in) from armhole edges.

Gather front neck edges to 5.5 – 5.5 – 6 – 6 – 6 cm (2 1/4 – 2 1/4 – 2 3/8 – 2 3/8 – 2 3/8 ins) and back neck edge to 12 – 12 – 13 – 13 – 14 cm (4 3/4 – 4 3/4 – 5 1/4 – 5 1/4 – 5 1/2 ins). Fold binding strip in half lengthwise and press, right fabric side facing out. Unfold strip out flat again. Now fold long edges of strip in to the pressed fold and press. Unfold the pressed binding strip. Work from outer side of garment to pin binding strip to back neck edge, matching centres. For each strap, measure and mark 9.5 – 9.5 – 9.5 – 10 – 10 cm (3 3/4 – 3 3/4 – 3 3/4 – 4 – 4 ins). Pin strip to front neck edges, from strap marking, leaving ends extending, for tie bands. Stitch binding strip to neck edges, stitching along the fold. Fold binding over edges to inside, turn edge under, and pin in place. Turn strap edges under and pin together. Turn ends of tie bands under and pin long edges together. Topstitch close to edges of binding, straps, and tie bands.

Press hem allowance and allowances at side slits to inside and turn edges under. Stitch 7 mm (1/4 in) from lower edge and from slit edges, stitching horizontally across top of each slit.



Additional Information:

Burda patterns do not include seam and hem allowances. We recommend adding 1-2 cm (3/8 - 3/4 inch) for seams and 2-5 cm (3/4 - 2 inch/es) for hems. Refer to your specific pattern instructions for exact measurements.

The fabric requirements are based on the fabric used for the original designs. These amounts will change if you use fabric of a different width. The pattern of the fabric determines whether all the pieces must be cut in the same direction or whether some can be reversed to save fabric.

The cutting layout printed with the instructions shows the best way to place the pattern pieces on our original fabric. Fold the fabric double with the right side facing in. The fabric then has a fold edge and a selvedge edge. When cutting from a single fabric layer, the right side should face up.

Pattern pieces which are shown in the cutting layout with broken outlines should be pinned to the fabric with their printed side facing down.

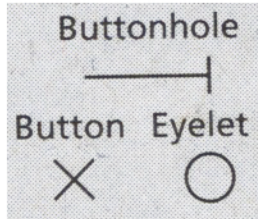
Grey shaded areas in the cutting layout indicate which pieces are to be interfaced.

Transfer the pattern piece lines to the wrong side of your fabric with burda dressmaker's carbon paper. Hand-baste along lines (e.g. for pockets or centre front) to make them visible on the right side of the fabric.

Key Symbols:

Seam numbers

show where pattern pieces must be sewn together. Match pieces with the same numbers.



Seam marks

on long seams. Match the small symbols to one another.



Presser foot is the symbol for seam and top-stitching lines.



Scissors

indicate edges to be cut without seam allowances and also slash lines, e.g. pocket openings.



Pleat symbol

Fold pleat in direction of arrow.



Placket/slit mark

Indicates beginning/end of placket/slit.



Gather
Ease
Stretch

