

### 112 Dress

Burda sizes 17, 18, 19, 20, 21

Length from waist 52 cm (20 1/2 ins)

### Materials

Viscose/rayon batiste,  
width: 135 cm (53 ins)  
length: 2.10 – 2.10 – 2.15 – 2.20 – 2.20 m  
(2 3/8 – 2 3/8 – 2 1/2 – 2 1/2 – 2 1/2 yds).

Interfacing.

1 invisible zip, 40 cm (16 ins) long, and a special presser foot.

Recommended fabrics: Lightweight dress fabrics.

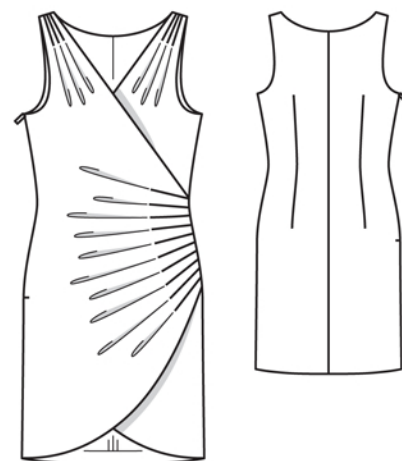
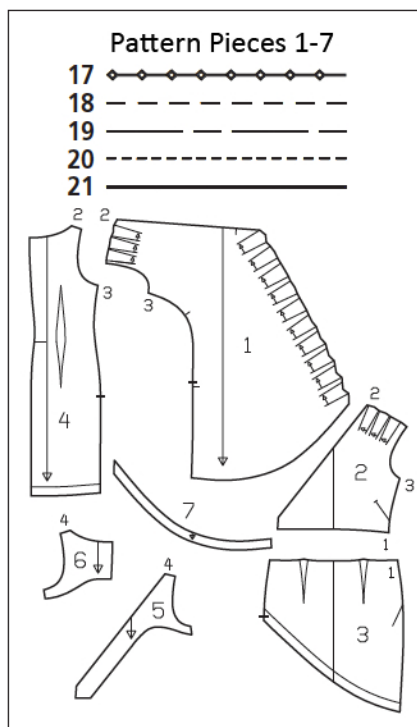
### Preparations

Print the pattern out on letter or A4 sized paper. It is **very** important to not scale the document. Your pattern will print on multiple pages, which you will then tile together. Arrange the sheets on a large, hard and flat surface matching up the numbers and letters (i.e. 6A to 6A). Cut or fold one of the sides and match the edge to its corresponding side. Then, tape down in place so paper is secure.

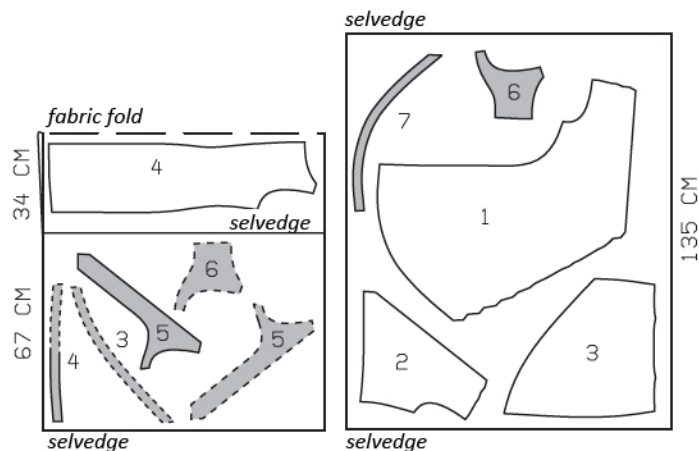
Trace the pattern pieces from the pattern sheet following the lines and markings for style 112 and your size. Trace the hem facing from pieces 3 and 4 each as a separate pattern piece. The pleats marked on pieces 1 and 2 (shoulder) are for size 17. For the other sizes, remark the pleats accordingly.

**burda style magazine patterns do not have seam allowance included.**

Seam and hem allowance to be added:  
Seams and edges 1.5 cm (5/8 in).



Fold the fabric as shown in the pattern layout. Right side faces in on a double layer of fabric; right side faces up on a single layer of fabric. Cut right and left pieces as opposites. Lay the asymmetric pieces 1, 3 and 7 printed side up and lay the hem facing of piece 3 printed side down, all on the right side of the fabric.



### Cutting Out

- 1 right front 1x
- 2 left upper front 1x
- 3 left lower front 1x
- left front hem facing 1x
- 4 back 2x
- back hem facing, on a fold 1x
- 5 front facing 2x
- 6 back facing 2x
- 7 right front hem facing 1x

Interfacing: See shaded area on pattern layout.

## Sewing

Stitch darts in left lower front. Press darts toward centre. Stitch left upper front to lower front. Press seam allowances open.

Work from inside to stitch pleats in right and left front, as far as arrow marks. Press pleats in direction of arrows. Press pleat seams. Baste pleats to shoulder edges and to side edge.

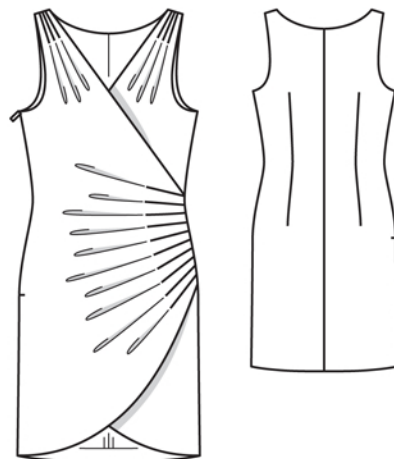
Stitch centre back seam and back darts. Press centre seam allowances open and press darts toward centre. Stitch centre seam of back facing. On front facings and on back facing, press shoulder seam allowances to inside.

Pin front facings to fronts and pin back facing to back, right sides together. Stitch along armhole edges, front neck edges, and back neck edge. Trim seam allowances. Clip curves several times. Turn facings to inside and press edges.

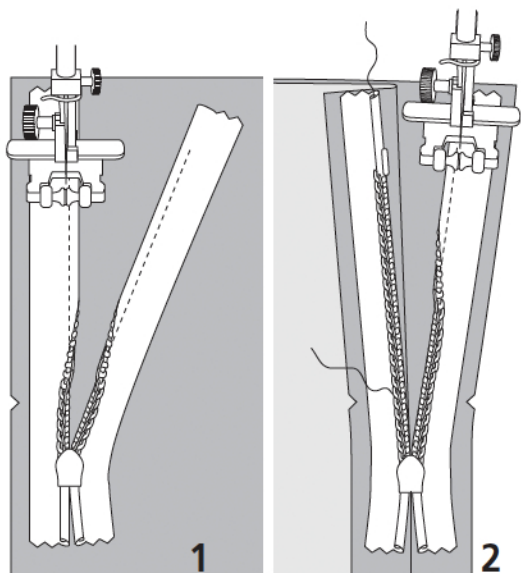
Stitch hem facings to lower edges of corresponding front and back pieces, right sides together. Trim seam allowances. Turn facings to inside and press edges. Baste left facing end to right front and baste right facing end to left front.

Lay right front on left front, with wrong side facing right side. Baste left side edges together between placement lines. Baste right edge of left front to inside right edge of right front, between seam marks. Edgestitch neck edge of right front to placement line, as far as seam mark.

Stitch shoulder seams, not catching facing. Press seam allowances open and slide allowances under facing pieces. Sew shoulder edges of facing together by hand.



At armhole edges, turn facings up again. Sew invisible zip to right side slit edges, see the "Helpful Hint" on next page. Begin at edge of armhole and leave ends of zip tapes extending at the top. At side seam edges, turn hem facings down again. Stitch right side seam from lower edge to zip. Stitch left side seam. Turn hem facing to inside again and sew in place by hand. At armhole edges, turn facings to inside again and sew to zip tapes, to centre back seam, and to left side seam.



These special zippers come in various lengths. The zipper should be at least 2 cm (3/4 in) longer than the slit. It is sewn in place before the seam below the slit is stitched. A special presser foot is required to sew the zipper in place.

### **Sewing the zipper in place:**

Open the zipper and push the coil back with your thumbnail to reveal the seam marking between the tape and the coil. Place the open zipper right side down on the right fabric side of one slit edge.

In order to stitch the zipper in place exactly along the marked seam line, you must first calculate the distance between the tape edge and the fabric edge as follows: width of seam allowance minus 1 cm (3/8 in) tape width = distance from edge of fabric. This will yield a value of 5 mm (3/16 in) if the width of the seam allowance is 1.5 cm (5/8 in).

Pin the top end of the zipper tape in place, the calculated distance from the edge of the fabric. The bottom end of the zipper will extend past the marked end of the slit. Place the presser foot on the zipper so that the coil is in the notch to the right of the needle (1). Stitch zipper in place, from the top to the marked end of the slit. Close zipper.

Place the other zipper tape face down on the opposite slit edge and pin in place at the top. Open zipper again. Place the presser foot on the top end of the zipper so that the coil is in the notch to the left of the needle (2). Sew the zipper in place, from the top to the end of the slit. Close zipper.

Now stitch the seam below the zipper, from bottom to top. Turn the loose lower end of the zipper out of the way, over the seam allowance. Stitch as close as possible to the last stitches of the zipper seams. Trim away excess zipper and bind the end with a scrap of fabric.

### Additional Information:

**Burda patterns do not include seam and hem allowances.** We recommend adding 1-2 cm (3/8 - 3/4 inch) for seams and 2-5 cm (3/4 - 2 inch/es) for hems. Refer to your specific pattern instructions for exact measurements.

The fabric requirements are based on the fabric used for the original designs. These amounts will change if you use fabric of a different width. The pattern of the fabric determines whether all the pieces must be cut in the same direction or whether some can be reversed to save fabric.

The cutting layout printed with the instructions shows the best way to place the pattern pieces on our original fabric. Fold the fabric double with the right side facing in. The fabric then has a fold edge and a selvedge edge. When cutting from a single fabric layer, the right side should face up.

Pattern pieces which are shown in the cutting layout with broken outlines should be pinned to the fabric with their printed side facing down.

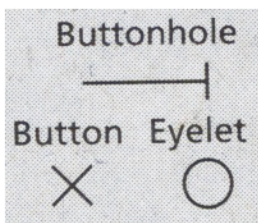
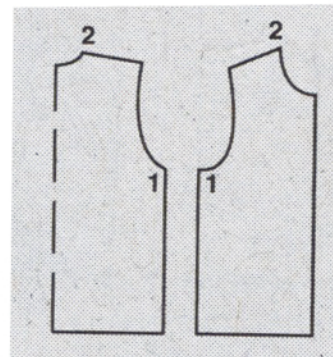
Grey shaded areas in the cutting layout indicate which pieces are to be interfaced.

Transfer the pattern piece lines to the wrong side of your fabric with burda dressmaker's carbon paper. Hand-baste along lines (e.g. for pockets or centre front) to make them visible on the right side of the fabric.

### Key Symbols:

#### Seam numbers

show where pattern pieces must be sewn together. Match pieces with the same numbers.

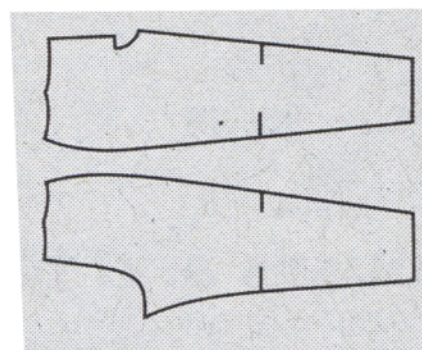


#### Seam marks

on long seams. Match the small symbols to one another.



**Presser foot**  
is the symbol for seam and top-stitching lines.



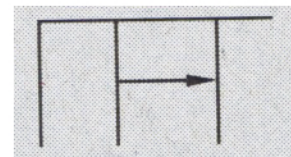
#### Scissors

indicate edges to be cut without seam allowances and also slash lines, e. g. pocket openings.



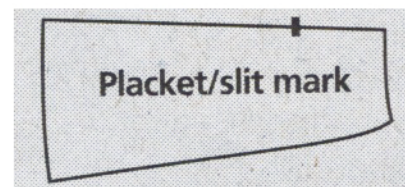
#### Pleat symbol

Fold pleat in direction of arrow.



#### Placket/slit mark

Indicates beginning/ end of placket/slit.



**Gather**  
**Ease**  
**Stretch**

