

103 Dress

Burda sizes 36, 38, 40, 42, 44

Length of dress from waist 55 cm (21 3/4 ins)

Materials

Crêpe, widthwise print and a pattern repeat of approx. 100 cm (40 ins)

width: 140 cm (55 ins)

length: 1.50 – 1.50 – 1.50 – 2.10 – 2.10 m
(1 3/4 – 1 3/4 – 1 3/4 – 2 3/8 – 2 3/8 yds).

Approx. 30 coloured beads and “gems” to sew on, in various shapes and sizes.

1 small button.

Recommended fabrics: Lightweight, softly draping dress fabrics.

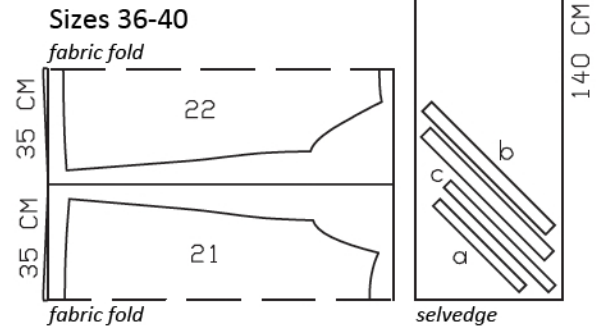
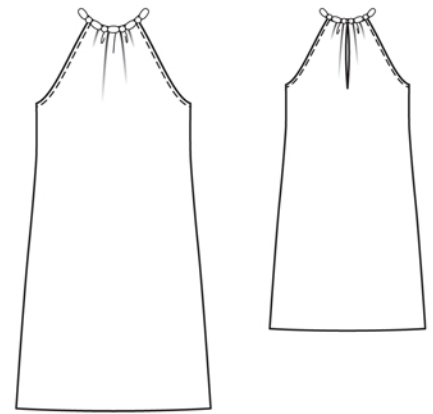
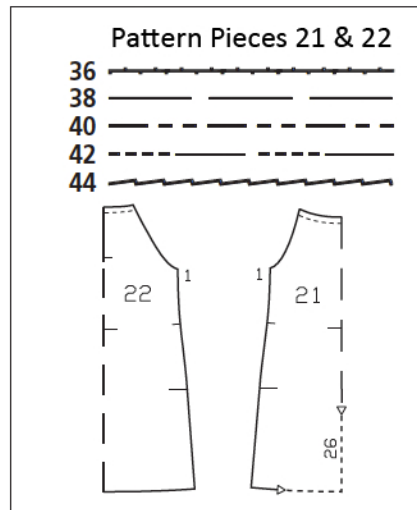
Preparations

Print the pattern out on letter or A4 sized paper. It is **very important** to not scale the document. Your pattern will print on multiple pages, which you will then tile together. Arrange the sheets on a large, hard and flat surface matching up the numbers and letters (i.e. 6A to 6A). Cut or fold one of the sides and match the edge to it's corresponding side. Then, tape down in place so paper is secure.

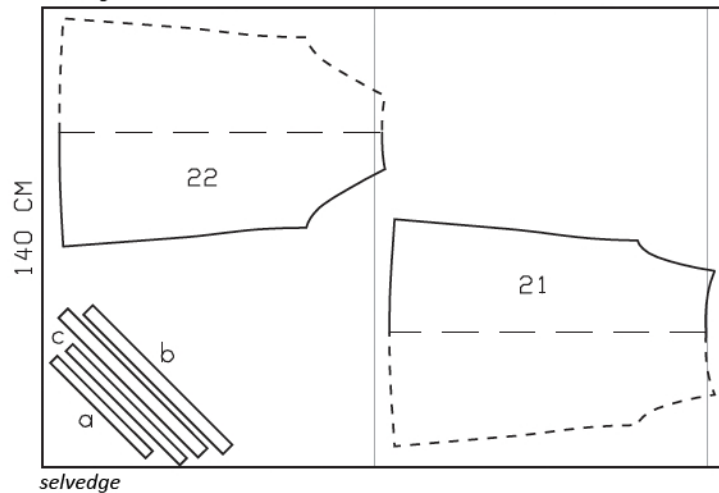
Trace the pattern pieces from the pattern sheet following the lines and markings for style 103 and your size.

burda style magazine patterns do not have seam allowance included.

Seam and hem allowance to be added:
Seams and edges 1.5 cm (5/8 in), no allowance on neck edges, hem 4 cm (1 5/8 ins).



Sizes 42, 44
selvedge



Fold the fabric as shown in the pattern layout. Right side faces in on a double layer of fabric; right side faces up on a single layer of fabric. Pay attention to fabric print.

Cutting Out

21 front, on a fold 1x
22 back, on a fold 1x

Draft the following pieces NOT included in the pattern:

a) bias binding strip for back slit, 37 – 38 – 39 – 40 – 41 cm (14 1/2 – 15 – 15 1/2 – 15 3/4 – 16 1/4 ins) long, 3 cm (1 1/4 ins) wide (incl. allowances),

b) 2 bias strips for armholes, 53 – 55 – 57 – 58 – 60 cm (21 – 21 3/4 – 22 1/2 – 23 – 23 3/4 ins) long, 4 cm (1 5/8 ins) wide (incl. allowances),

c) bias strip for neck edge and straps, 45 – 46 – 47 – 48 – 49 cm (17 3/4 – 18 1/8 – 18 1/2 – 19 – 19 1/4 ins) long, 3 cm (1 1/4 ins) wide (incl. allowances).

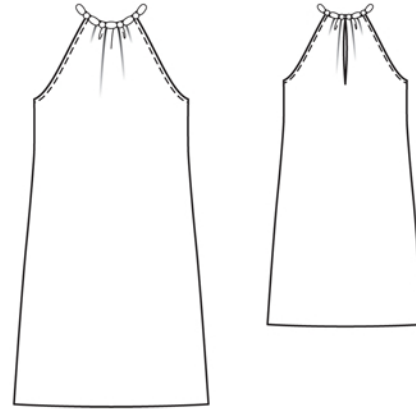
Sewing

Slash back slit as marked. Spread cut edges open to a straight line and stitch to one long edge of binding strip, as narrowly as possible. Press binding strip over attachment seam into slit, then fold to a width of 7 mm (1/4 in). Turn inside edge under and sew to attachment seam on inside. At bottom of slit, stitch diagonally across binding. Turn binding to inside, press, and baste to neck edge.

Stitch side seams. Press seam allowances open.

Armholes: Fold bias strips in half lengthwise and press, right side facing out. Stitch folded bias strips to armhole edges so that fold edge of each strip lies on garment piece, 1 cm (3/8 in) past seam line. Trim seam allowances. Turn strip to inside. Topstitch 7 mm (1/4 in) from armhole edges.

Neck edge and straps: Gather front neck edge to 11 – 11 – 12 – 12 – 12 cm (4 3/8 – 4 3/8 – 4 3/4 – 4 3/4 – 4 3/4 ins) and each back neck edge to 6 – 6.5 – 6.5 – 6.5 – 7 cm (2 3/8 – 2 5/8 – 2 5/8 – 2 5/8 – 2 3/4 ins). Fold binding strip in half lengthwise and press, right fabric side facing out. Unfold strip out flat again. Now fold long edges of strip in to the pressed fold and press. Unfold the pressed binding strip. Work from outer side



of garment to pin binding strip to front neck edge, matching centre fronts. For each strap, measure and mark 9.5 – 9.5 – 9.5 – 10 – 10 cm (3 3/4 – 3 3/4 – 3 3/4 – 4 – 4 ins). Pin strip to back neck edges, from strap marking. Stitch binding strip to neck edges, stitching along the fold. Turn binding up and turn back ends under. Turn binding over edges to inside, turn raw edge under, and pin. Turn strap edges under and pin together. Topstitch close to edges of binding and straps.

Fasten back slit with a button and thread loop.

Sew beads and “gems” to binding and straps.

Press hem allowance to inside and sew in place by hand.

Additional Information:

Burda patterns do not include seam and hem allowances. We recommend adding 1-2 cm (3/8 - 3/4 inch) for seams and 2-5 cm (3/4 - 2 inch/es) for hems. Refer to your specific pattern instructions for exact measurements.

The fabric requirements are based on the fabric used for the original designs. These amounts will change if you use fabric of a different width. The pattern of the fabric determines whether all the pieces must be cut in the same direction or whether some can be reversed to save fabric.

The cutting layout printed with the instructions shows the best way to place the pattern pieces on our original fabric. Fold the fabric double with the right side facing in. The fabric then has a fold edge and a selvedge edge. When cutting from a single fabric layer, the right side should face up.

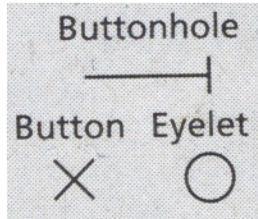
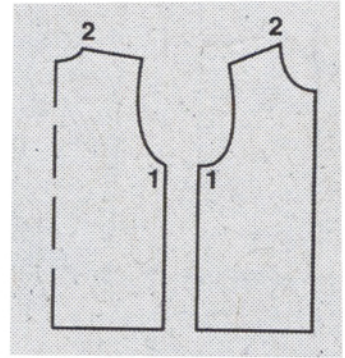
Pattern pieces which are shown in the cutting layout with broken outlines should be pinned to the fabric with their printed side facing down.

Grey shaded areas in the cutting layout indicate which pieces are to be interfaced.

Transfer the pattern piece lines to the wrong side of your fabric with burda dressmaker's carbon paper. Hand-baste along lines (e.g. for pockets or centre front) to make them visible on the right side of the fabric.

Key Symbols:

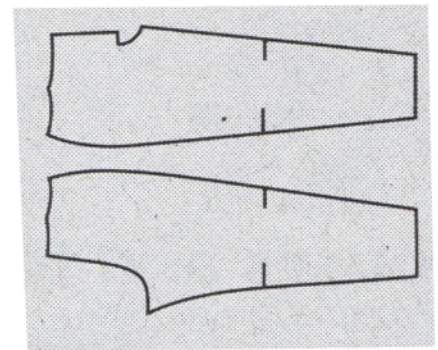
Seam numbers
show where pattern pieces must be sewn together. Match pieces with the same numbers.



Seam marks
on long seams. Match the small symbols to one another.



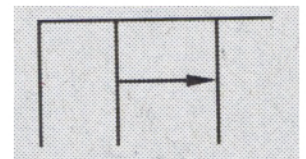
Presser foot
is the symbol for seam and top-stitching lines.



Scissors
indicate edges to be cut without seam allowances and also slash lines, e.g. pocket openings.



Pleat symbol
Fold pleat in direction of arrow.



Placket/slit mark
Indicates beginning/end of placket/slit.



Gather
Ease
Stretch

