

114 Dress

Burda sizes **36, 38, 40, 42, 44**

Length from waist 60 cm (23 3/4 ins)

Materials

Fine stretch jersey,
width: 140 cm (55 ins)
length: 2.25 – 2.25 – 2.30 – 2.30 – 2.30 m
(2 5/8 yds).

Interfacing.

A twin sewing machine needle.

Recommended fabrics: Fine stretch jersey. Use only stretch jersey fabrics.

Preparations

Print the pattern out on letter or A4 sized paper. It is **very** important to not scale the document. Your pattern will print on multiple pages, which you will then tile together. Arrange the sheets on a large, hard and flat surface matching up the numbers and letters (i.e. 6A to 6A). Cut or fold one of the sides and match the edge to its corresponding side. Then, tape down in place so paper is secure.

Trace the pattern pieces from the pattern sheet following the lines and markings for style 114 and your size.

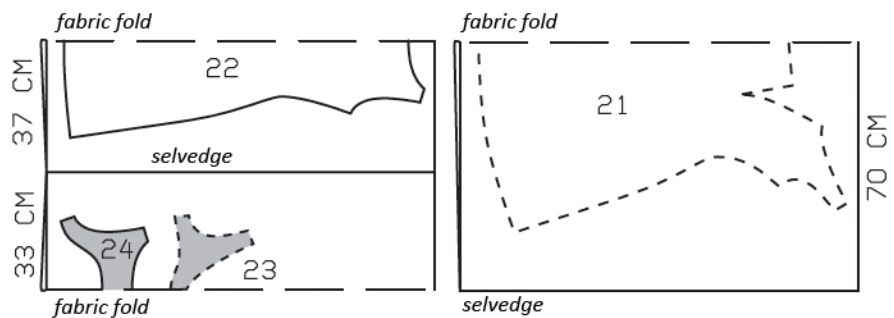
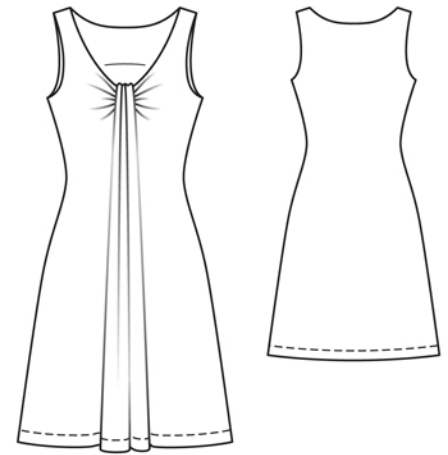
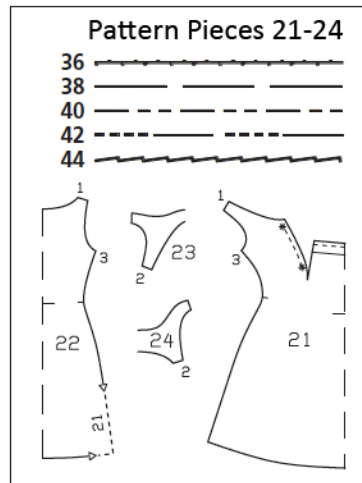
burda style magazine patterns do not have seam allowance included.

Seam and hem allowance to be added:
Seams and edges 1.5 cm (5/8 in), hem 4 cm (1 5/8 ins).

Cutting Out

21 front, on a fold 1x
22 back, on a fold 1x
23 front neck facing, on a fold 1x
24 back neck facing, on a fold 1x

Interfacing: See shaded area on pattern layout.



Fold the fabric as shown in the pattern layout, right side facing in.

Sewing

Front: Cut darts along centre, up to 4 cm (1 5/8 ins) before pointed end. Gather side seam edges of darts to a length of 5.5 – 6 – 6.5 – 7 – 7.5 cm (2 1/4 – 2 3/8 – 2 5/8 – 2 3/4 – 3 ins), between asterisks. Pin darts – marked neck edge meets fold line. Stitch darts below fold line. Press darts open, pressing points of darts flat. Fold front at centre front, wrong side facing in. Pin dart seams together. Stitch along line of dart seam, from fold line to end of gathering. Unfold front. Pin centre front to dart seam. Baste straight upper front edges together, then turn down on fold line and pin.

Neck edge, armhole edges, and shoulder seams: Pin front facing to front and pin back facing to back, right sides together. Stitch along neck and armhole edges, beginning and ending 2 cm (3/4 in) below each shoulder seam line. Trim seam allowances. Clip curves close to stitching. On front (not on back), turn facing to inside. Slide front shoulder edges between the as-yet-unturned back shoulder edges – right fabric sides of front and back and of facings lie together. Stitch shoulder seams on dress and on facing. Pull the front which lies inside and the front facing up and out slightly to press seams open. This will be easier if you slip the handle of a wooden spoon under the seams. Then stitch remaining open neck edges closed. Pull front down out of back shoulder edges and the back facing will turn itself to the inside. Press neck edges.

Sewing Continued...

At armhole edges, turn facings up again. Stitch side seams. Then turn facings to inside again. Sew inside facing edge to seams.

Remove pins from front and turn turned-down end up again. Gather upper edge to a length of 4 cm (1 5/8 ins). Turn gathered edge to inside at fold line and sew to facing.

Press hem allowance to inside. Work from outer side of garment to stitch hem 2.5 cm (1 in) from lower edge, using the twin machine needle.

