

105 Jacket

Burda sizes 36, 38, 40, 42, 44

Back length approx. 45 cm (18 ins)

Materials

Novelty fabric with widthwise print,
width: 135 cm (53 ins)
length: 1.00 – 1.05 – 1.05 – 1.10 – 1.10 m
(1 1/8 – 1 1/4 – 1 1/4 – 1 1/4 – 1 1/4 yds).

Lining,
width: 140 cm (55 ins)
length: 0.65 m (7/8 yd) for all sizes.

Interfacing.

Beaded trim (tulle band, approx. 7 cm / 3 ins wide,
embroidered with beads over a width of 2.5 cm / 1
in: 1.45 – 1.45 – 1.50 – 1.50 – 1.50 m (1 3/4 yds).

Lightweight shoulder pads.

Recommended fabrics: Jacket fabrics.

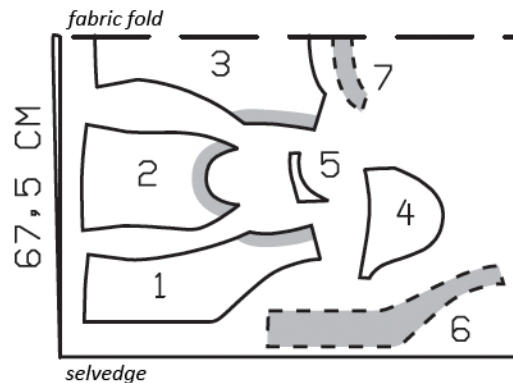
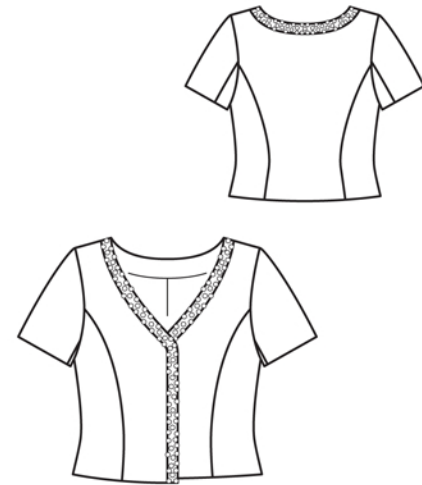
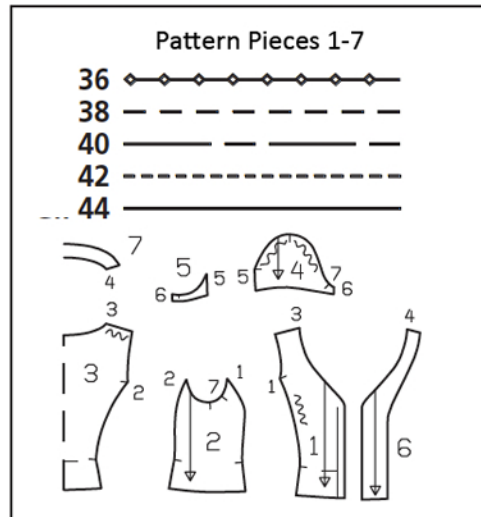
Preparations

Print the pattern out on letter or A4 sized paper.
It is **very important** to not scale the document.
Your pattern will print on multiple pages, which
you will then tile together. Arrange the sheets on
a large, hard and flat surface matching up the
numbers and letters (i.e. 6A to 6A). Cut or fold
one of the sides and match the edge to it's cor-
responding side. Then, tape down in place so paper
is secure.

Trace the pattern pieces from the pattern sheet
following the lines and markings for style 105 and
your size.

**burda style magazine patterns do not have seam
allowance included.**

Seam and hem allowance to be added:
Seams and edges 1.5 cm (5/8 in), hem 4 cm (1
5/8 ins), lining 1.5 cm (5/8 in).



Cut from a double layer
of fabric, right side facing
in.

Cutting Out

Novelty fabric:

- 1 front 2x
- 2 side piece 2x
- 3 back, on a fold 1x
- 4 upper sleeve 2x
- 5 under sleeve 2x
- 6 front facing 2x
- 7 back facing, on a fold 1x

Lining: piece 1 minus width of facing; piece 3 minus width of facing and with
an ease pleat of approx. 2 cm (3/4 in) at centre back; pieces 2, 4 and 5.

Interfacing: See shaded area on pattern layout. Also interface hem allow-
ances.

Sewing

Stitch side pieces to front pieces, easing fronts from • to •. Stitch side pieces to back piece. Press the seam allowances open. Stitch shoulder seams on jacket and on facing.

Pin facing to jacket, right sides together. Stitch along front and neck edges. Trim seam allowances. Turn facing to inside and press edges.

Stitch sleeve seams. Set in sleeves, easing sleeve caps. Sew in shoulder pads in place.

At hem edge, unfold facings. Press hem allowance to inside, then turn down again. Turn facings to inside again.

Sew lining: On lining back, stitch ease pleat at top and bottom, each approx. 5 cm (2 ins) long, and baste in between. Press pleat to one side. Stitch seams of lining. Set in sleeve linings.

Sew lining in place, hem jacket: Stitch lining to inside facing edge, right sides together. Lay lining inside jacket with wrong sides facing, pulling linings into sleeves. Turn lower edges of each sleeve and lining under at one seam and hold with a single straight pin. Reach between jacket and lining to first pull out one sleeve. Remove the pin but keep hold of the edges. Stitch lower edges of sleeve and lining together, right sides facing. Work from right side of jacket to pull out the sleeve and the sleeve lining will pull itself into the jacket. Sew lining of other sleeve in place in same manner. Turn hem allowance to inside and sew in place by hand. Turn lining edge under along hem edge and press fold lightly. Push upward in a shallow curve and pin to hem allowance. Sew facings and lining in place. Lay extra length of lining down and press lightly.

Trim edges of tulle band to 1.5 cm (5/8 in) from beads. Turn unembroidered edge under. Pin band along front and neck edges of jacket. At the hem edge, turn ends of band under, first removing beads and securing the thread ends. Sew band edges in place by hand.



Additional Information:

Burda patterns do not include seam and hem allowances. We recommend adding 1-2 cm (3/8 - 3/4 inch) for seams and 2-5 cm (3/4 - 2 inch/es) for hems. Refer to your specific pattern instructions for exact measurements.

The fabric requirements are based on the fabric used for the original designs. These amounts will change if you use fabric of a different width. The pattern of the fabric determines whether all the pieces must be cut in the same direction or whether some can be reversed to save fabric.

The cutting layout printed with the instructions shows the best way to place the pattern pieces on our original fabric. Fold the fabric double with the right side facing in. The fabric then has a fold edge and a selvedge edge. When cutting from a single fabric layer, the right side should face up.

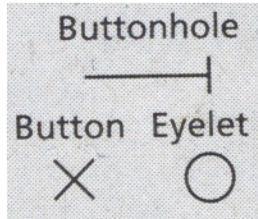
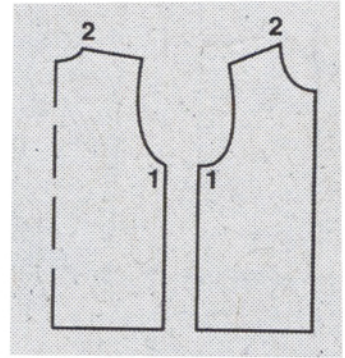
Pattern pieces which are shown in the cutting layout with broken outlines should be pinned to the fabric with their printed side facing down.

Grey shaded areas in the cutting layout indicate which pieces are to be interfaced.

Transfer the pattern piece lines to the wrong side of your fabric with burda dressmaker's carbon paper. Hand-baste along lines (e.g. for pockets or centre front) to make them visible on the right side of the fabric.

Key Symbols:

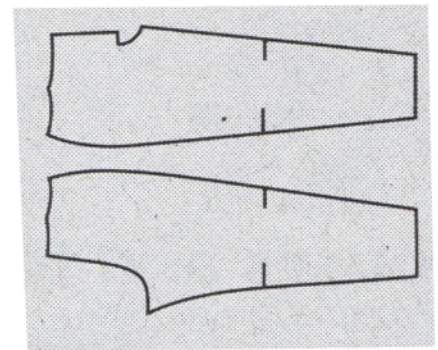
Seam numbers
show where pattern pieces must be sewn together. Match pieces with the same numbers.



Seam marks
on long seams. Match the small symbols to one another.



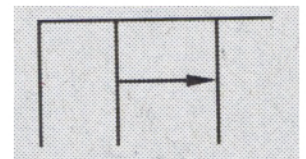
Presser foot
is the symbol for seam and top-stitching lines.



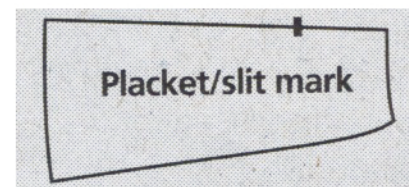
Scissors
indicate edges to be cut without seam allowances and also slash lines, e.g. pocket openings.



Pleat symbol
Fold pleat in direction of arrow.



Placket/slit mark
Indicates beginning/end of placket/slit.



Gather
Ease
Stretch

