

126A Dress

Burda sizes 34, 36, 38, 40, 42

Length from waist 66 cm (26 ins)

Materials

Jersey, for dress bodice
width: 160 cm (63 in)
length: 0.55 m (3/4 yd) for all sizes.

Bouclé, for the skirt
width: 150 cm (59 in)
length: 0.75 m (7/8 yd).

Lining, for the skirt
width: 140 cm (55 in)
length: 0.75 m (7/8 yd).

Interfacing.

Vilene Bias Tape.

1 invisible zip, 22 cm (9 ins) long.

3 sew-on snap fasteners.

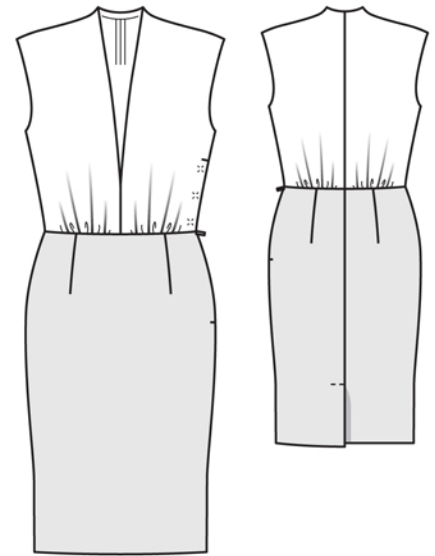
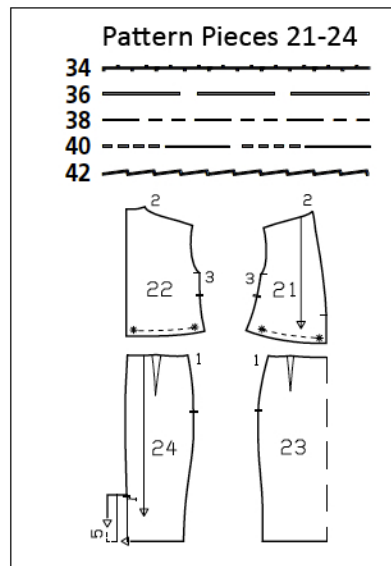
Recommended fabrics: Fabrics with some body for the skirt and softly draping fabrics for the bodice.

Preparations

Print the pattern out on letter or A4 sized paper. It is **very important** to not scale the document. Your pattern will print on multiple pages, which you will then tile together. Arrange the sheets on a large, hard and flat surface matching up the numbers and letters (i.e. 6A to 6A). Cut or fold one of the sides and match the edge to its corresponding side. Then, tape down in place so paper is secure.

Trace the pattern pieces from the pattern sheet following the lines and markings for style 126A and your size. On back vent, note the different lines for the right and left edges, but cut the skirt panels the same size initially from the double layer of fabric.

The side asterisks (for gathering) on pieces 21 and 22 are marked for size 34 only. For the remaining sizes, place each asterisk the same distance from side seam line as for size 34.

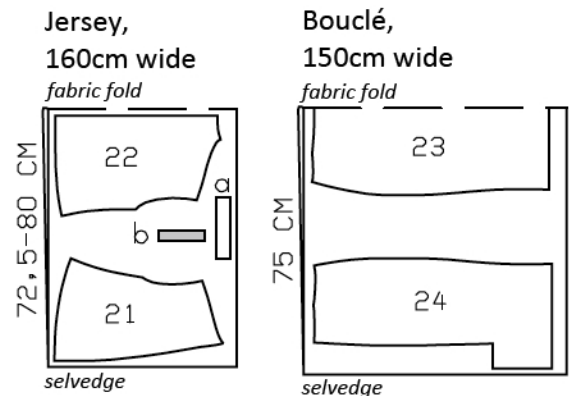


burda style magazine patterns do not have seam allowance included.

Seam and hem allowance to be added:

Seams and edges 1.5 cm (5/8 in), armhole edges 1 cm (3/8 in), hem 4 cm (1 5/8 ins).

Cut from a double layer of fabric, right side facing in.



Cutting Out

Jersey:

21 front 2x
22 back 2x

a) facing strip for back neck edge, 16 – 16 – 17 – 17 – 18 cm (6 3/8 – 6 3/8 – 6 3/4 – 6 3/4 – 7 ins) long, 6 cm (2 3/8 ins) wide (incl. allowances),
b) fastening underlap, 13 cm (5 1/4 ins) long, 3 cm (1 1/4 ins), finished width 1.5 cm (5/8 in).

Bouclé:

23 front skirt panel, on a fold 1x
24 back skirt panel 2x

Lining: piece 23 and piece 24 without vent allowances.

Interfacing: Interface fastening underlap piece and interface allowance on side fastening edge of left front.

Vilene Bias Tape: Iron to wrong side of front shoulder edges and of neck edge.

Sewing

Stitch centre front seam of dress bodice below marking. Stitch centre back seam. Press seams open.

Fold the facing strip for the back neck edge lengthwise, right side facing out. Press. Pin the folded facing strip to back neck edge so that fold edge of strip lies on garment piece, 1.5 cm (5/8 in) past seam line. Stitch along neck edge. Trim seam allowances. Turn facing strip toward neck opening.

Stitch shoulder seams, stitching back facing strip to allowances of front neck edge. Turn back facing strip and allowances on front neck edge to inside and sew in place by hand.

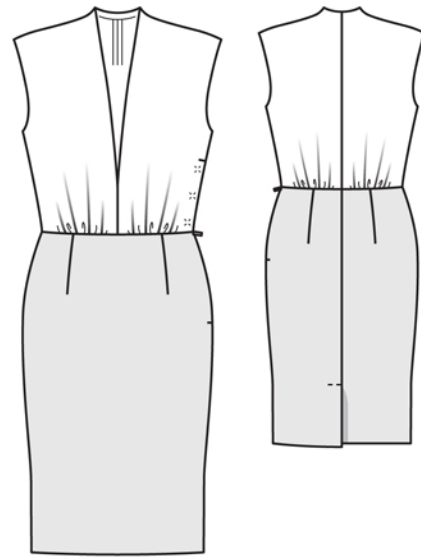
Press the allowance at edge of each armhole to inside and sew in place by hand.

Stitch the right side seam of the dress bodice. Stitch the left side seam above the slit mark. Press seams open.

Fold the fastening underlap piece lengthwise, right side facing in. Stitch across bottom end. Turn underlap right side out and press. Neaten long edges together. Stitch the underlap to the back edge of the opening, leaving seam allowance at lower back edge extending. Press allowance on front edge of opening to inside and baste at bottom. Lay front opening edge on underlap. At upper end of slit, stitch horizontally, catching the underlap.

Sew top ends of side seam allowances in place by hand.

Stitch darts in the skirt panels and press toward centre. Stitch centre back seam, leaving the vent open. Press seam allowances open and press the left vent facing to the inside. Lay the right vent underlap toward left back and press seam allowance of right back under, tapering as you go to avoid the need to clip allowance. At vent underlap, press facing to inside. At left edge of vent, trim facing to 4.5 cm (1 7/8 ins) wide. Top-stitch left back skirt panel diagonally at top of vent, as marked, catching the underlap.



Stitch the right side seam of the skirt. Sew the invisible zip to left opening edges, see the “Helpful Hint” on next page. Stitch left side seam from lower edge to zip opening.

Stitch the darts and seams of the skirt lining. Leave the opening for the zip 2 cm (3/4 in) longer than on the skirt of outer fabric. Turn in side slit edges of lining, approx. 7 mm (1/4 in) wider than marked, and press.

Gather lower edge of bodice back between asterisks. Pin skirt right sides together with dress bodice, not catching allowances of slit edges or zip. Pin the skirt lining to the dress bodice with right side facing wrong side. Fold allowances of side slit (with zip) each over slit edge, onto lining, and pin to upper edge. Stitch skirt joining seam. Lay skirt and skirt lining down. Sew lining to zip tapes.

At hem edge, turn vent allowances back again. Press hem allowance to inside and sew in place by hand. Turn allowances at edges of vent to inside again and sew to hem.

Trim away a rectangle of lining at the back vent, rounding off the top corners. Hem the edges narrowly. Turn in hem allowance of lining and stitch so that lining is 2 cm (3/4 in) shorter than the dress.

Sew the top halves of snap fasteners to inner side of front opening edge, evenly spaced. Sew bottom halves of snaps to underlap of fastening edge, to match upper halves.



These special zippers come in various lengths. The zipper should be at least 2 cm (3/4 in) longer than the slit. It is sewn in place before the seam below the slit is stitched. A special presser foot is required to sew the zipper in place.

Sewing the zipper in place:

Open the zipper and push the coil back with your thumbnail to reveal the seam marking between the tape and the coil. Place the open zipper right side down on the right fabric side of one slit edge.

In order to stitch the zipper in place exactly along the marked seam line, you must first calculate the distance between the tape edge and the fabric edge as follows: width of seam allowance minus 1 cm (3/8 in) tape width = distance from edge of fabric. This will yield a value of 5 mm (3/16 in) if the width of the seam allowance is 1.5 cm (5/8 in).

Pin the top end of the zipper tape in place, the calculated distance from the edge of the fabric. The bottom end of the zipper will extend past the marked end of the slit. Place the presser foot on the zipper so that the coil is in the notch to the right of the needle (1). Stitch zipper in place, from the top to the marked end of the slit. Close zipper.

Place the other zipper tape face down on the opposite slit edge and pin in place at the top. Open zipper again. Place the presser foot on the top end of the zipper so that the coil is in the notch to the left of the needle (2). Sew the zipper in place, from the top to the end of the slit. Close zipper.

Now stitch the seam below the zipper, from bottom to top. Turn the loose lower end of the zipper out of the way, over the seam allowance. Stitch as close as possible to the last stitches of the zipper seams. Trim away excess zipper and bind the end with a scrap of fabric.

Additional Information:

Burda patterns do not include seam and hem allowances. We recommend adding 1-2 cm (3/8 - 3/4 inch) for seams and 2-5 cm (3/4 - 2 inch/es) for hems. Refer to your specific pattern instructions for exact measurements.

The fabric requirements are based on the fabric used for the original designs. These amounts will change if you use fabric of a different width. The pattern of the fabric determines whether all the pieces must be cut in the same direction or whether some can be reversed to save fabric.

The cutting layout printed with the instructions shows the best way to place the pattern pieces on our original fabric. Fold the fabric double with the right side facing in. The fabric then has a fold edge and a selvedge edge. When cutting from a single fabric layer, the right side should face up.

Pattern pieces which are shown in the cutting layout with broken outlines should be pinned to the fabric with their printed side facing down.

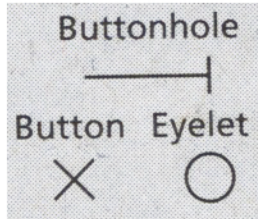
Grey shaded areas in the cutting layout indicate which pieces are to be interfaced.

Transfer the pattern piece lines to the wrong side of your fabric with burda dressmaker's carbon paper. Hand-baste along lines (e.g. for pockets or centre front) to make them visible on the right side of the fabric.

Key Symbols:

Seam numbers

show where pattern pieces must be sewn together. Match pieces with the same numbers.



Seam marks

on long seams. Match the small symbols to one another.



Presser foot is the symbol for seam and top-stitching lines.



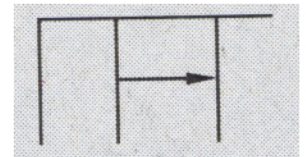
Scissors

indicate edges to be cut with-out seam allowances and alsoslash lines, e. g. pocket openings.



Pleat symbol

Fold pleat in direction of arrow.



Placket/slit mark

Indicates beginning/ end of placket/slit.



Gather
Ease
Stretch

