

119 Dress

Burda sizes 36, 38, 40, 42, 44

Length from waist 72 cm (28 1/2 ins)

Materials

Wool flannel,
width: 150 cm (59 in)
length: 1.70 – 1.70 – 2.05 – 2.05 – 2.05 m
(1 7/8 – 1 7/8 – 2 1/4 – 2 1/4 – 2 1/4 yds).

Interfacing.

Vilene Bias Tape.

1 invisible zip, 70 cm (28 ins) long.

Recommended fabrics: Dress fabrics of wool or blends.

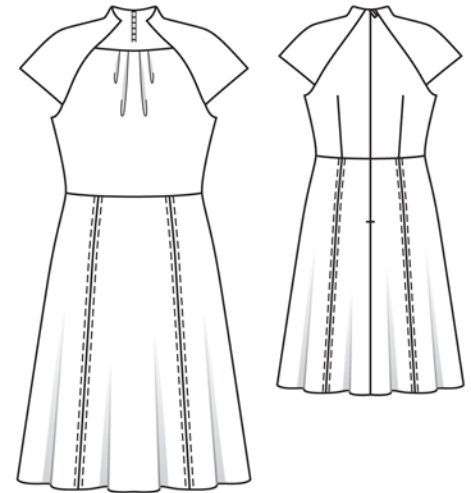
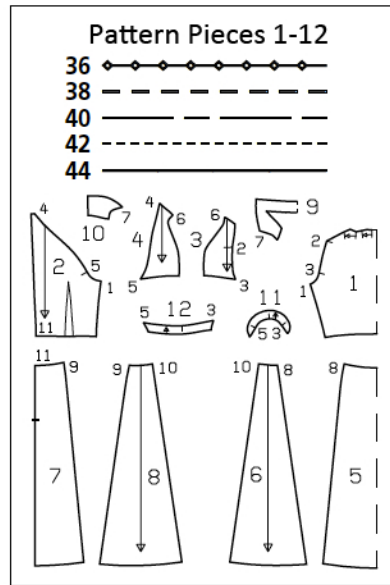
Preparations

Print the pattern out on letter or A4 sized paper. It is **very important** to not scale the document. Your pattern will print on multiple pages, which you will then tile together. Arrange the sheets on a large, hard and flat surface matching up the numbers and letters (i.e. 6A to 6A). Cut or fold one of the sides and match the edge to its corresponding side. Then, tape down in place so paper is secure.

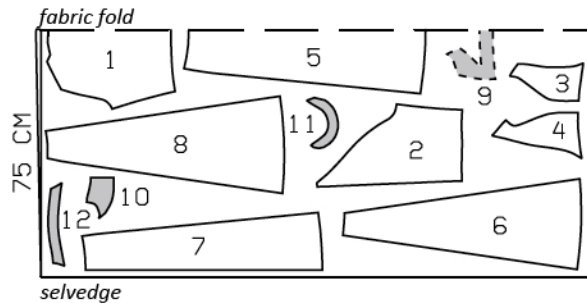
Trace the pattern pieces from the pattern sheet following the lines and markings for style 119 and your size. The pleat arrows on piece 1 are marked for size 36. For the other sizes, mark new pleat arrows according to the size lines.

burda style magazine patterns do not have seam allowance included.

Seam and hem allowance to be added:
Seams and edges 1.5 cm (5/8 in), top sleeve seams and sleeve joining seam 1 cm (3/8 in), hem 4 cm (1 5/8 ins).

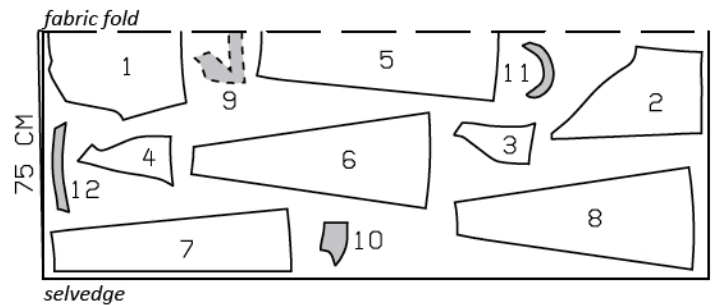


Sizes 36, 38



Cut from a double layer of fabric, right side facing in.

Sizes 40-44



Cutting Out

- 1 front, on a fold 1x
- 2 back 2x
- 3 sleeve front 2x
- 4 sleeve back 2x
- 5 centre front skirt panel, on a fold 1x
- 6 side front skirt panel 2x
- 7 centre back skirt panel 2x
- 8 side back skirt panel 2x
- 9 front neck facing, on a fold 1x
- 10 back neck facing 2x
- 11 armhole facing 2x
- 12 sleeve facing 2x

Interfacing: See pattern layout. Iron Vilene Bias Tape to wrong sides of armhole edges.

Sewing

Stitch back darts in dress bodice and press toward centre. Fold front pleats in direction of arrows and baste. Stitch side seams on dress bodice. Press seam allowances open.

Stitch top sleeve seams (seam number 6). Press seam allowances open. Stitch sleeve facings right sides together with lower edges of sleeves. Lay facings down and press seams open.

Pin armhole facings right sides together with edges of armholes. Stitch between markings (seam numbers 3 and 5). Turn extending ends of facing back and pin.

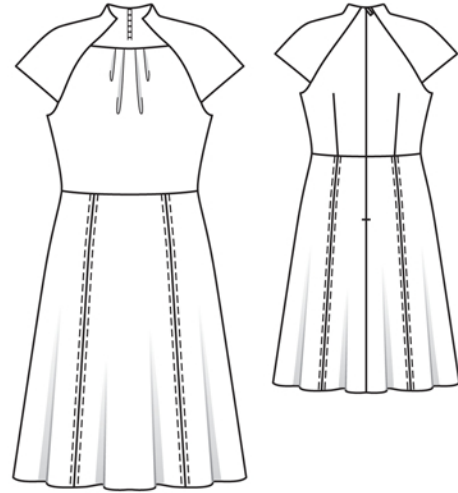
Stitch sleeve fronts to bodice front, from seam number 2 to 3, and stitch sleeve backs to bodice backs, from seam number 4 to 5. Press seam allowances open.

Remove pins from armhole facings. Turn facings over seam allowances into armholes and stitch to seam allowances, close to seam. Turn armhole and sleeve facings to inside, turn in, and sew together to sleeve joining seams. Sew inside edges together by hand.

Stitch section seams on skirt. Press seam allowances open. Topstitch 5 mm (3/16 in) to each side of seams. Stitch side seams.

Stitch skirt to dress bodice. Press seam allowances up.

Sew invisible zip to back opening edges, see the "Helpful Hint" on next page. Stitch centre back seam from lower edge to zip.



Neck edge: Stitch shoulder seams of facing. First stitch facing to front neck edge, right sides together, beginning and ending exactly at front sleeve joining seams. Then pin facing to remaining neck edge, laying seam allowances of front sleeve joining seams forward. At zip opening, turn facing back, approx. 5 mm (3/16 in) before edge of opening, and pin to upper edge. Turn allowances of dress at edges of opening to outside and pin to neck edge, over facing. Stitch along neck edge, up to each corner at front sleeve joining seams. Clip facing into corners of neck edge. Trim seam allowances. Turn allowances on opening edges to inside. Turn facing up and stitch to seam allowances, close to seam, as far as possible. Turn facing to inside and sew to zip tapes. Sew inside edge of facing to seams.

Press hem allowance to inside and sew in place by hand.



These special zippers come in various lengths. The zipper should be at least 2 cm (3/4 in) longer than the slit. It is sewn in place before the seam below the slit is stitched. A special presser foot is required to sew the zipper in place.

Sewing the zipper in place:

Open the zipper and push the coil back with your thumbnail to reveal the seam marking between the tape and the coil. Place the open zipper right side down on the right fabric side of one slit edge.

In order to stitch the zipper in place exactly along the marked seam line, you must first calculate the distance between the tape edge and the fabric edge as follows: width of seam allowance minus 1 cm (3/8 in) tape width = distance from edge of fabric. This will yield a value of 5 mm (3/16 in) if the width of the seam allowance is 1.5 cm (5/8 in).

Pin the top end of the zipper tape in place, the calculated distance from the edge of the fabric. The bottom end of the zipper will extend past the marked end of the slit. Place the presser foot on the zipper so that the coil is in the notch to the right of the needle (1). Stitch zipper in place, from the top to the marked end of the slit. Close zipper.

Place the other zipper tape face down on the opposite slit edge and pin in place at the top. Open zipper again. Place the presser foot on the top end of the zipper so that the coil is in the notch to the left of the needle (2). Sew the zipper in place, from the top to the end of the slit. Close zipper.

Now stitch the seam below the zipper, from bottom to top. Turn the loose lower end of the zipper out of the way, over the seam allowance. Stitch as close as possible to the last stitches of the zipper seams. Trim away excess zipper and bind the end with a scrap of fabric.

Additional Information:

Burda patterns do not include seam and hem allowances. We recommend adding 1-2 cm (3/8 - 3/4 inch) for seams and 2-5 cm (3/4 - 2 inch/es) for hems. Refer to your specific pattern instructions for exact measurements.

The fabric requirements are based on the fabric used for the original designs. These amounts will change if you use fabric of a different width. The pattern of the fabric determines whether all the pieces must be cut in the same direction or whether some can be reversed to save fabric.

The cutting layout printed with the instructions shows the best way to place the pattern pieces on our original fabric. Fold the fabric double with the right side facing in. The fabric then has a fold edge and a selvedge edge. When cutting from a single fabric layer, the right side should face up.

Pattern pieces which are shown in the cutting layout with broken outlines should be pinned to the fabric with their printed side facing down.

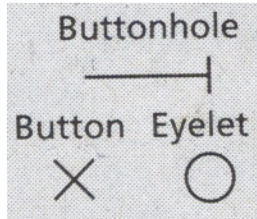
Grey shaded areas in the cutting layout indicate which pieces are to be interfaced.

Transfer the pattern piece lines to the wrong side of your fabric with burda dressmaker's carbon paper. Hand-baste along lines (e.g. for pockets or centre front) to make them visible on the right side of the fabric.

Key Symbols:

Seam numbers

show where pattern pieces must be sewn together. Match pieces with the same numbers.



Seam marks

on long seams. Match the small symbols to one another.



Presser foot is the symbol for seam and top-stitching lines.



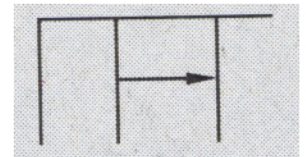
Scissors

indicate edges to be cut without seam allowances and also slash lines, e.g. pocket openings.



Pleat symbol

Fold pleat in direction of arrow.



Placket/slit mark

Indicates beginning/ end of placket/slit.



Gather
Ease
Stretch

