

### 125 Dress

Burda sizes **72, 76, 80, 84, 88**

Length from waist 75 cm (29 3/4 ins)

### Materials

Novelty houndstooth fabric,  
width: 150 cm (59 in)  
length: 3.20 m (3 1/2 yds) for all sizes.

Lining for dress bodice,  
width: 140 cm (55 in)  
length: 0.60 m (3/4 yd).

Vilene Bias Tape.

1 invisible zip, 40 cm (16 ins) long.

Recommended fabrics: Dress fabrics of wool or blends.

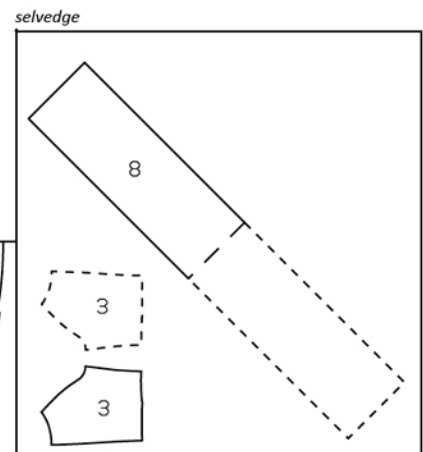
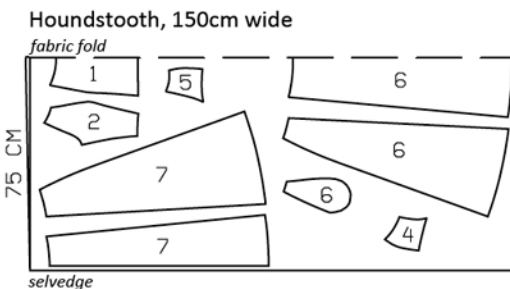
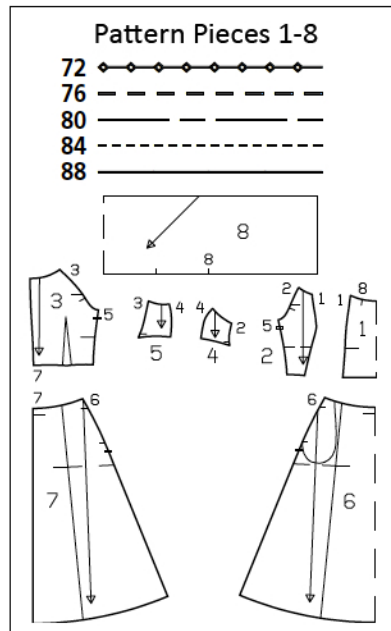
### Preparations

Print the pattern out on letter or A4 sized paper. It is **very important** to not scale the document. Your pattern will print on multiple pages, which you will then tile together. Arrange the sheets on a large, hard and flat surface matching up the numbers and letters (i.e. 6A to 6A). Cut or fold one of the sides and match the edge to its corresponding side. Then, tape down in place so paper is secure.

Trace the pattern pieces from the pattern sheet following the lines and markings for style 125 and your size. Trace the pocket piece from piece 6 as a separate pattern piece – it is the same for all sizes. Cut pieces 6 and 7 apart on the marked seam line = centre and side front skirt panels and centre and side back skirt panels.

**burda style magazine patterns do not have seam allowance included.**

Seam and hem allowance to be added:  
Seams and edges 1.5 cm (5/8 in), hem 4 cm (1 5/8 ins).



Fold the fabric as shown in the pattern layout. Right side faces in on a double layer of fabric. Right side faces up on a single layer of fabric. Cut right and left centre back pieces as opposites. Match fabric print at stripe markings.

### Cutting Out

- Houndstooth:
- 1 centre front, on a fold 1x
  - 2 side front 2x
  - 3 back 2x
  - 4 sleeve front 2x
  - 5 sleeve back 2x
  - 6 centre front skirt panel, on a fold 1x
  - 6 side front skirt panel 2x
  - pocket piece 2x
  - 7 centre back skirt panel 2x
  - 7 side back skirt panel 2x
  - 8 collar, on a fold 1x

Lining: pieces 1 to 5 and also pocket piece (piece 6).

Vilene Bias Tape: Iron to wrong side of neck and armhole edges and to edges of zip opening.

## Sewing

Stitch the darts in dress bodice and press toward centre. Stitch centre back seam and front section seams. Stitch sleeve fronts to front and stitch sleeve backs to back, ending stitching exactly at each seam mark. Stitch top sleeve seams and right side seam. Press seam allowances open.

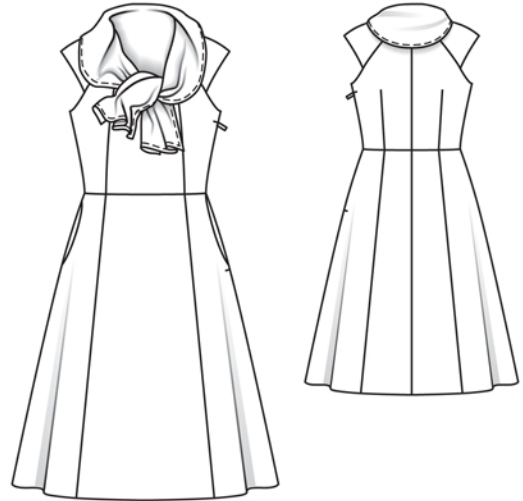
Stitch the centre back seam and the section seams on skirt pieces. Stitch skirt right side seam, not stitching across pocket opening edges.

**In-seam pocket in right seam:** Pin pocket pieces right sides together with seam allowances of pocket opening edges – pocket lining pieces in front, fabric pocket pieces in back. Stitch pocket pieces in place, close to side seam and, at pocket opening, along the seam line. Press pocket pieces forward and stitch together. Baste upper edges of pocket pieces in place.

**Pocket in left seam:** Pin the pocket lining piece right sides together with left pocket opening edge of front skirt panel. Stitch pocket piece in place, from upper edge to lower seam mark, stitching downward at an angle from seam mark to edge of seam allowance to avoid needing to clip allowance. Turn pocket piece to the inside. Press pocket opening edge. Lay the fabric pocket piece right sides together with the attached pocket piece. Allowance of fabric pocket piece extends past edge of pocket opening. Stitch pocket pieces together on inside of skirt. Baste pocket to upper edge of skirt panel and to left side seam edge below pocket opening.

Stitch skirt to dress bodice. Press seam allowances up.

Sew invisible zip to left side edges, between slit marks, see the “Helpful Hint” on next page. Stitch the left side seam down from armhole and up from hem line, each to zip. Press seam allowances open.



Press allowances on the outer collar edges to inside, as far as the seam mark (seam number 8). Beginning at seam mark, press allowance under in a shallow curve, toward edge of seam allowance, so that it does not need to be clipped when stitching the collar in place. Turn the seam allowances half under and stitch. Baste collar to neck edge, between the seam marks.

Stitch darts and seams of bodice lining. Leave slit for zip open as mirror image of zip slit on dress. Pull lining over dress, right sides facing. Stitch neck edges together. Trim allowances. Turn lining up and stitch to allowance, close to seam. Turn lining to inside. Press neck edge.

Turn lower edges of sleeves and linings under and pin together with a single straight pin. On back, reach between outer fabric and lining and pull out lower edge of each sleeve. Stitch edges together, right sides facing. Trim seam allowances. Push sleeves back in place in again. Turn under edges of armholes (outer fabric and lining) at one side seam and pin together. Then pull out and stitch together. Trim allowances. Push edges of armholes in place again. Press edges.

Turn bodice lining down, turn edges under, and sew to zip tapes and to skirt joining seam.

Loop extending ends of collar together, make nicely shaped folds, and sew in place on front, with a few stitches by hand.

Press hem allowance to inside and sew in place by hand.



These special zippers come in various lengths. The zipper should be at least 2 cm (3/4 in) longer than the slit. It is sewn in place before the seam below the slit is stitched. A special presser foot is required to sew the zipper in place.

### **Sewing the zipper in place:**

Open the zipper and push the coil back with your thumbnail to reveal the seam marking between the tape and the coil. Place the open zipper right side down on the right fabric side of one slit edge.

In order to stitch the zipper in place exactly along the marked seam line, you must first calculate the distance between the tape edge and the fabric edge as follows: width of seam allowance minus 1 cm (3/8 in) tape width = distance from edge of fabric. This will yield a value of 5 mm (3/16 in) if the width of the seam allowance is 1.5 cm (5/8 in).

Pin the top end of the zipper tape in place, the calculated distance from the edge of the fabric. The bottom end of the zipper will extend past the marked end of the slit. Place the presser foot on the zipper so that the coil is in the notch to the right of the needle (1). Stitch zipper in place, from the top to the marked end of the slit. Close zipper.

Place the other zipper tape face down on the opposite slit edge and pin in place at the top. Open zipper again. Place the presser foot on the top end of the zipper so that the coil is in the notch to the left of the needle (2). Sew the zipper in place, from the top to the end of the slit. Close zipper.

Now stitch the seam below the zipper, from bottom to top. Turn the loose lower end of the zipper out of the way, over the seam allowance. Stitch as close as possible to the last stitches of the zipper seams. Trim away excess zipper and bind the end with a scrap of fabric.

## Additional Information:

**Burda patterns do not include seam and hem allowances.** We recommend adding 1-2 cm (3/8 - 3/4 inch) for seams and 2-5 cm (3/4 - 2 inch/es) for hems. Refer to your specific pattern instructions for exact measurements.

The fabric requirements are based on the fabric used for the original designs. These amounts will change if you use fabric of a different width. The pattern of the fabric determines whether all the pieces must be cut in the same direction or whether some can be reversed to save fabric.

The cutting layout printed with the instructions shows the best way to place the pattern pieces on our original fabric. Fold the fabric double with the right side facing in. The fabric then has a fold edge and a selvedge edge. When cutting from a single fabric layer, the right side should face up.

Pattern pieces which are shown in the cutting layout with broken outlines should be pinned to the fabric with their printed side facing down.

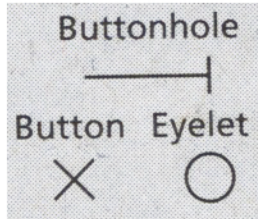
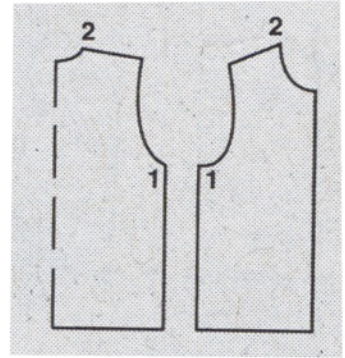
Grey shaded areas in the cutting layout indicate which pieces are to be interfaced.

Transfer the pattern piece lines to the wrong side of your fabric with burda dressmaker's carbon paper. Hand-baste along lines (e.g. for pockets or centre front) to make them visible on the right side of the fabric.

## Key Symbols:

### Seam numbers

show where pattern pieces must be sewn together. Match pieces with the same numbers.



### Seam marks

on long seams. Match the small symbols to one another.



**Presser foot** is the symbol for seam and top-stitching lines.



### Scissors

indicate edges to be cut without seam allowances and also slash lines, e.g. pocket openings.



### Pleat symbol

Fold pleat in direction of arrow.



### Placket/slit mark

Indicates beginning/end of placket/slit.



**Gather**  
**Ease**  
**Stretch**

