

112 Cape

Burda sizes 36, 38, 40, 42, 44

Back length approx. 73 cm (29 ins)

Materials

Check bouclé,
width: 150 cm (59 in)
length: 1.80 m (2 ins) for all sizes.

Interfacing.

4 flat buttons.

Recommended fabrics: Wool or blends.

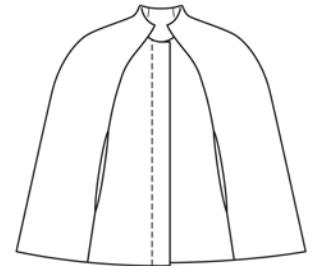
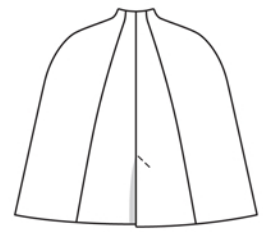
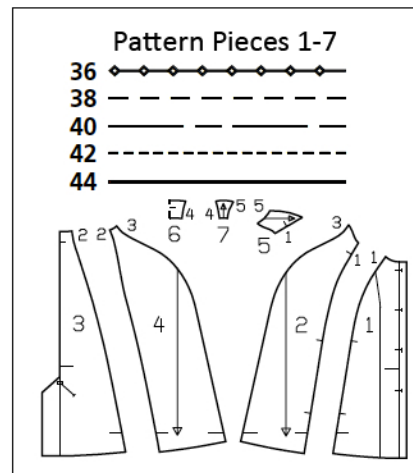
Preparations

Print the pattern out on letter or A4 sized paper. It is **very** important to not scale the document. Your pattern will print on multiple pages, which you will then tile together. Arrange the sheets on a large, hard and flat surface matching up the numbers and letters (i.e. 6A to 6A). Cut or fold one of the sides and match the edge to its corresponding side. Then, tape down in place so paper is secure.

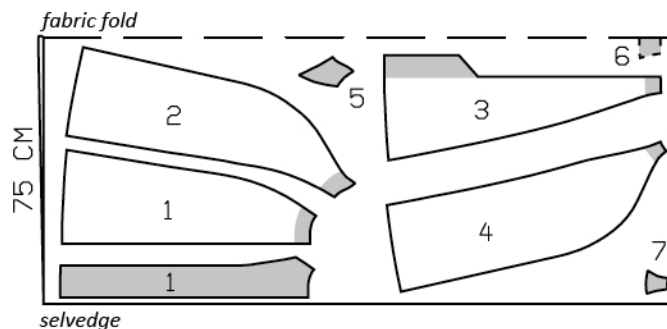
Trace the pattern pieces from the pattern sheet following the lines and markings for style 112 and your size. Trace the front facing from piece 1 as a separate pattern piece. Transfer the buttonholes to the facing, they are marked for size 36. For sizes 38 – 44, mark the top buttonhole the same distance from neck edge as for size 36. The bottom buttonhole is in the same place for all sizes. Space the other buttonholes evenly in between.

burda style magazine patterns do not have seam allowance included.

Seam and hem allowance to be added:
Seams and edges 1.5 cm (5/8 in), hem 4 cm (1 5/8 ins).



Cut from a double layer of fabric, right side facing in. Match check lines.



Cutting Out

Bouclé:

- 1 centre front 2x
- front facing 2x
- 2 side front 2x
- 3 centre back 2x
- 4 side back 2x
- 5 side front facing for neck edge 2x
- 6 centre back neck facing, on a fold 1x
- 7 side back facing for neck edge 2x

Interfacing: See pattern layout. Also interface the hem allowances. On front pieces, interface allowances on edges of arm openings.

Sewing

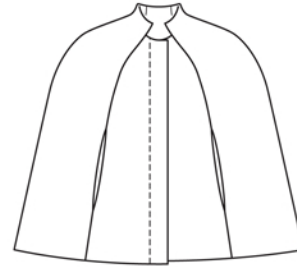
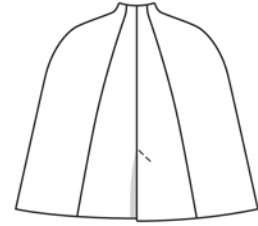
Centre back seam and slit: Stitch centre back seam, leaving vent open at bottom. Press seam allowances open and press right vent facing to inside. Lay left vent facing onto right back and press seam allowance of left back under, above vent, tapering as you go to avoid the need to clip the allowance. Press allowance on vertical edge of underlap to inside and stitch in place. Topstitch top of vent at an angle, catching underlap.

Stitch the back section seams. Stitch the side fronts to the centre fronts below marking (seam number 1), but do not stitch across opening, between the markings. Stitch the shoulder seams and side seams as continuous seams. Press the seam allowances open. Sew seam allowances of openings in place by hand.

Work buttonholes in right front facing.

Front edges and neck edge: Stitch the back section seams of the neck facing (seam number 4) and stitch the shoulder seams (seam number 5). Stitch the front facings to the neck facing, from the marking (seam number 1) – neck facing extends past upper edge of front facings, from seam marks. Press the seam allowances open. Pin the front facings right sides together with the fronts. Stitch along front and neck edges of centre fronts. Pin neck facing right sides together with neck edge and stitch, turning seam allowances of side fronts and front facing edges forward. Trim seam allowances. Turn facings to inside and press edges.

At hem edge, turn front facings and back vent facing back. Press hem allowance to inside and sew in place by hand. Turn facings to inside again and sew to hem allowance and to seams. Topstitch 5 cm (2 ins) wide from right front.



Additional Information:

Burda patterns do not include seam and hem allowances. We recommend adding 1-2 cm (3/8 - 3/4 inch) for seams and 2-5 cm (3/4 - 2 inch/es) for hems. Refer to your specific pattern instructions for exact measurements.

The fabric requirements are based on the fabric used for the original designs. These amounts will change if you use fabric of a different width. The pattern of the fabric determines whether all the pieces must be cut in the same direction or whether some can be reversed to save fabric.

The cutting layout printed with the instructions shows the best way to place the pattern pieces on our original fabric. Fold the fabric double with the right side facing in. The fabric then has a fold edge and a selvedge edge. When cutting from a single fabric layer, the right side should face up.

Pattern pieces which are shown in the cutting layout with broken outlines should be pinned to the fabric with their printed side facing down.

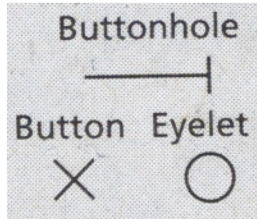
Grey shaded areas in the cutting layout indicate which pieces are to be interfaced.

Transfer the pattern piece lines to the wrong side of your fabric with burda dressmaker's carbon paper. Hand-baste along lines (e.g. for pockets or centre front) to make them visible on the right side of the fabric.

Key Symbols:

Seam numbers

show where pattern pieces must be sewn together. Match pieces with the same numbers.



Seam marks

on long seams. Match the small symbols to one another.



Presser foot is the symbol for seam and top-stitching lines.



Scissors

indicate edges to be cut without seam allowances and also slash lines, e.g. pocket openings.



Pleat symbol

Fold pleat in direction of arrow.



Placket/slit mark

Indicates beginning/ end of placket/slit.



Gather
Ease
Stretch

