

120A Jacket

Burda sizes 17, 18, 19, 20, 21

Back length approx. 53 cm (21 ins)

7/8-sleeves approx. 52 cm (20 1/2 ins) long

Materials

Print knit fabric (with a plain back),

wdth: 140 cm (55 in)

length: 1.30 m (1 1/2 yds) for all sizes.

A small piece of nappa leather, approx. 15 x 65 cm (6 x 26 ins).

Interfacing.

Vilene Bias Tape.

1 separating metal zip, 45 – 50 – 50 – 50 – 50 cm (18 – 20 – 20 – 20 – 20 ins) long.

Recommended fabrics: Compact knits or jersey; brushed fabrics.

Preparations

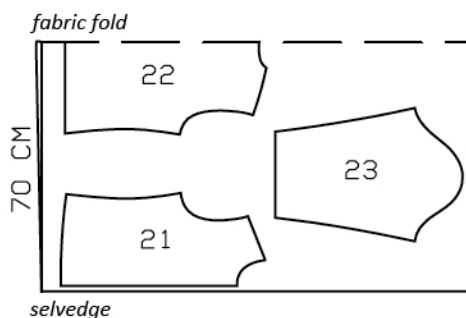
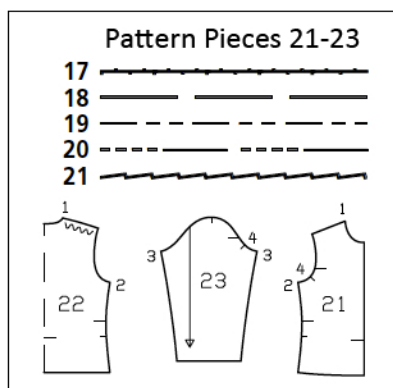
Print the pattern out on letter or A4 sized paper. It is **very important** to not scale the document. Your pattern will print on multiple pages, which you will then tile together. Arrange the sheets on a large, hard and flat surface matching up the numbers and letters (i.e. 6A to 6A). Cut or fold one of the sides and match the edge to it's corresponding side. Then, tape down in place so paper is secure.

Trace the pattern pieces from the pattern sheet following the lines and markings for style 120A and your size.

burda style magazine patterns do not have seam allowance included.

Seam and hem allowance to be added:

Seams and edges 1.5 cm (5/8 in), hem 4 cm (1 5/8 ins), front edges 1 cm (3/8 in).



Cut from a double layer of fabric, right side facing in.

Cutting Out

Knit fabric:

21 front 2x

22 back, on a fold 1x

23 sleeve 2x

Leather:

2 binding strips for lower sleeve edges, 26 – 27 – 27 – 28 – 28 cm (10 1/4 – 10 3/4 – 10 3/4 – 11 1/8 – 11 1/8 ins) long, 4 cm (1 5/8 ins) wide (incl. allowances),

1 binding strip for neck edge, 45 – 46 – 47 – 48 – 49 cm (17 3/4 – 18 1/8 – 18 1/2 – 19 – 19 1/4 ins) long, 4 cm (1 5/8 ins) wide (incl. allowances).

Interfacing: Interface hem allowances. Iron Vilene Bias Tape to wrong side of front shoulder edges and wrong side of armhole edges.

Sewing

Stitch the shoulder seams, beginning and ending at the marked neck edge. Stitch side seams. Press seam allowances open.

Press hem allowance to the inside and sew in place by hand. Turn allowances of front edges to outside and press.

Shorten the zip at the top for sizes 18 – 21: The teeth of the zip should begin 1 cm (3/8 in) below the neck edge. Finished length of zip = 46 – 46.5 – 47.5 – 48.5 cm (18 1/8 – 18 1/4 – 18 3/4 – 19 1/8 ins). Mark this length on the zip. Use pliers to remove the top stoppers and the surplus teeth. Reattach the stoppers and press firmly to secure. Trim away the zip tapes 2 cm (3/4 in) above teeth.

Open the zip. Lay halves of zip on outside of garment so that teeth end at front edges. Topstitch close to edges of zip tapes and 7 mm (1/4 in) from edges, using the zipper foot of your sewing machine.

Trim away the seam allowance on neck edge. Pin binding strip right sides together with neck edge and stitch 1 cm (3/8 in) from edge. Turn binding strip up and turn ends under. Fold binding strip to inside, over edge. Topstitch binding from right side, close to joining seam. Trim edge of binding on inside, close to stitching.

Trim away allowances on lower edges of sleeves. Pin each binding strip right sides together with lower edge of sleeve. Stitch 1 cm (3/8 in) from edge. Turn binding strip down. Stitch sleeve seams, also stitching ends of binding strip together. Fold binding to inside, over edges of sleeves. Work from right side to edges – stitch binding in place.

Set in sleeves.



Additional Information:

Burda patterns do not include seam and hem allowances. We recommend adding 1-2 cm (3/8 - 3/4 inch) for seams and 2-5 cm (3/4 - 2 inch/es) for hems. Refer to your specific pattern instructions for exact measurements.

The fabric requirements are based on the fabric used for the original designs. These amounts will change if you use fabric of a different width. The pattern of the fabric determines whether all the pieces must be cut in the same direction or whether some can be reversed to save fabric.

The cutting layout printed with the instructions shows the best way to place the pattern pieces on our original fabric. Fold the fabric double with the right side facing in. The fabric then has a fold edge and a selvedge edge. When cutting from a single fabric layer, the right side should face up.

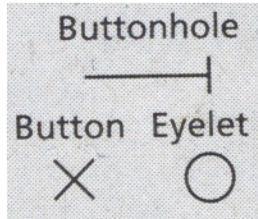
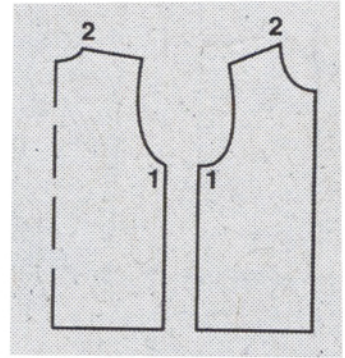
Pattern pieces which are shown in the cutting layout with broken outlines should be pinned to the fabric with their printed side facing down.

Grey shaded areas in the cutting layout indicate which pieces are to be interfaced.

Transfer the pattern piece lines to the wrong side of your fabric with burda dressmaker's carbon paper. Hand-baste along lines (e.g. for pockets or centre front) to make them visible on the right side of the fabric.

Key Symbols:

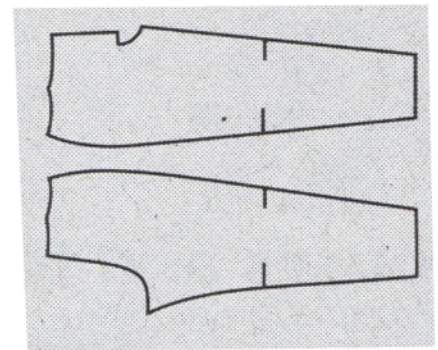
Seam numbers
show where pattern pieces must be sewn together. Match pieces with the same numbers.



Seam marks
on long seams. Match the small symbols to one another.



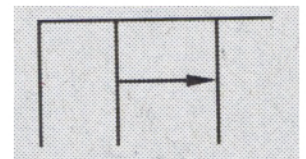
Presser foot
is the symbol for seam and top-stitching lines.



Scissors
indicate edges to be cut without seam allowances and also slash lines, e.g. pocket openings.



Pleat symbol
Fold pleat in direction of arrow.



Placket/slit mark
Indicates beginning/end of placket/slit.

