

128 Jacket

Burda sizes 34, 36, 38, 40, 42

Back length approx. 55 cm (22 ins)

3/4-sleeves, approx. 52cm (20 1/2 ins) long

Materials

Houndstooth fabric with tulle lace,
width: 140 cm (55 in)

length: 1.70 – 1.70 – 1.70 – 1.75 – 1.75 m
(1 7/8 – 1 7/8 – 1 7/8 – 2 – 2 yds).

A piece of nappa leather, 20 x 30 cm (8 x 12 ins).

Lining,

width: 140 cm (55 in)

length: 1.10 m (1 1/4 yds) for all sizes.

Interfacing.

3 buttons.

Recommended fabrics: Jacket fabrics with some body, of wool or blends.

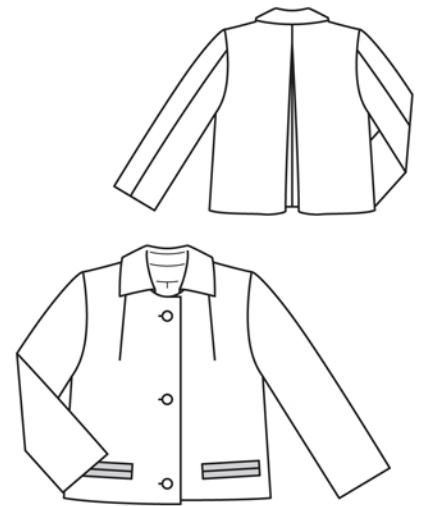
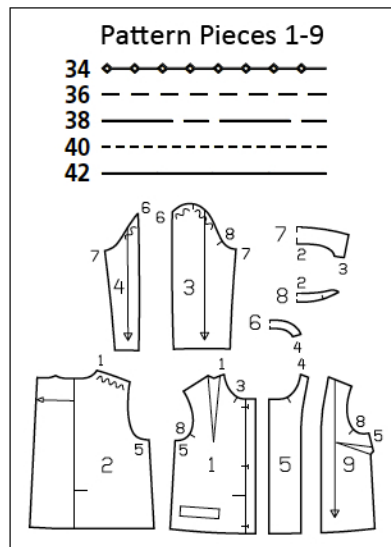
Preparations

Print the pattern out on letter or A4 sized paper. It is **very** important to not scale the document. Your pattern will print on multiple pages, which you will then tile together. Arrange the sheets on a large, hard and flat surface matching up the numbers and letters (i.e. 6A to 6A). Cut or fold one of the sides and match the edge to its corresponding side. Then, tape down in place so paper is secure.

Trace the pattern pieces from the pattern sheet following the lines and markings for style 128 and your size. The buttonholes on piece 1 are marked for size 34. For sizes 36 – 42, mark the top buttonhole the same distance from neck edge as for size 34. The bottom buttonhole is the same for all sizes. Centre the other buttonhole in between. The pleat arrow on piece 2 is marked for size 34. For the other sizes, remark the pleat arrow accordingly.

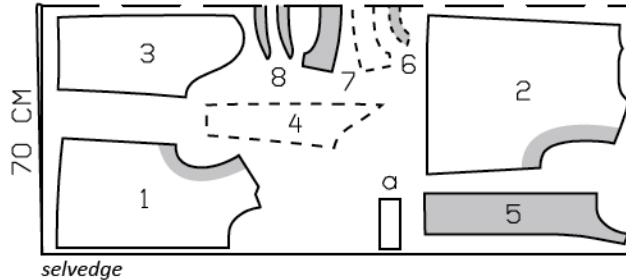
burda style magazine patterns do not have seam allowance included. To be added:

Seams and edges 1.5 cm (5/8 in), hem 4 cm (1 5/8 ins). Cut lining pieces with 1.5 cm (5/8 in) seam and hem allowances.



Houndstooth, 140cm wide

fabric fold



Cut from a double layer of fabric, right side facing in.

Cutting Out

Houndstooth:

- 1 front 2x
- 2 back 2x
- 3 sleeve front 2x
- 4 sleeve back 2x
- 5 front facing 2x
- 6 back facing, on a fold 1x
- 7 collar, on a fold 2x
- 8 collar band, on a fold 2x

Draft the following pieces NOT included in the pattern:

a) 2 pocket pieces, 17 cm (6 3/4 ins) wide, 9 cm (3 5/8 ins) long (including allowances).

Leather:

4 welt strips, each 17 cm (6 3/4 ins) long, 6.5 cm (25/8 ins) wide (incl. allowances).

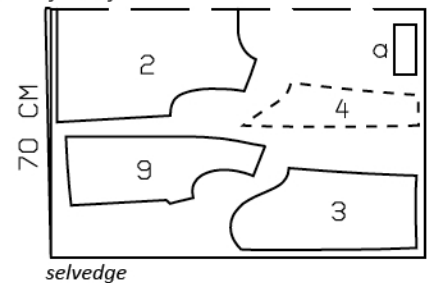
Lining:

9 front lining piece 2x

piece 2 without pleat, minus neck facing, with 3 cm (1 1/4 in) wide allowance for ease pleat at centre back, and on a fold; pieces 3 and 4; and also piece a.

Lining, 140cm wide

fabric fold



Sewing

Interfacing: See pattern layout. Iron interfacing to under collar piece. Also interface hem allowances. Iron strips of interfacing, approx. 5 cm (2 ins) wide, to wrong side of fabric, over pocket markings. Interface welt strips.

Stitch front darts. Cut darts open along the centre, trim allowances, and press open, pressing pointed ends of darts flat.

Sew welt pockets on the fronts: Hand baste along abutting lines for welts, 1.7 cm (a scant 3/4 in) from welt joining lines (= finished width of welts), to make lines visible on right side of fabric. Fold the welt strips lengthwise, right side facing out, and press. Lay each folded welt on jacket front and pin in place so that fold edge of welt meets abutting line. Stitch each welt in place along joining line, 1.7 cm (a scant 3/4 in) from fold edge. Slash between lines of stitching and clip diagonally toward each last stitch, but do not cut into welts. Turn welts toward pocket openings and press. Fold small triangles of fabric at pocket opening ends to inside and stitch to welts, from seam end to seam end. Stitch pocket lining pieces to seam allowances of lower welt joining seams. Stitch fabric pocket pieces to seam allowances of upper welt joining seams. Trim the pocket pieces even and stitch together.

Stitch the centre back seam. Press the seam allowances open. For the inverted pleat, fold the back piece at centre back, right side facing in, so that the pleat lines meet. Stitch the pleat from upper edge to arrow marking. Fold the pleat in direction of arrow and baste to upper edge. Press the pleat in length of the seam, but do not press pleat folds below the seam.

Stitch side seams, shoulder seams and facing seams.



Front edges and collar: Pin the facing right sides together with the jacket. Stitch along front neck edges, to marking. Leave facing lying right sides together with jacket for now. Stitch collar band pieces to corresponding collar pieces. Trim seam allowances and press open. Topstitch close to each side of seams. Stitch collar pieces right sides together along outer edges, from seam number 3. Begin and end stitching on narrow ends, exactly at seam line of joining edge. Trim the seam allowances. Turn collar right side out and press. Lay the collar between jacket and facing. Stitch undercollar to neck edge of jacket and stitch top collar to facing. Press seam allowances open. Turn facing to inside. Pin collar joining seams together exactly. Turn back facing up and stitch seam allowances together, close to collar joining seam. Turn facing down.

Unfold facings at hem. Press hem allowance to inside and sew by hand. Sew facings to hem allowance.

Stitch sleeve seams. Hem sleeves. Set in sleeves, easing sleeve caps.

Line jacket: On the back lining piece, stitch the ease pleat at the top, 5 cm (2 ins) long. Press the pleat to one side. Hem the back lining so that it is approx. 2 cm (3/4 in) shorter than the jacket. Stitch the darts and seams of the lining. Set in sleeve linings. Stitch lining to inside edge of facing, leaving approx. 8 cm (3 1/4 ins) open at bottom. Lay lining inside jacket, with wrong sides facing, pulling linings into sleeves. Above hem of jacket, pin a fold, approx. 1 cm (3/8 in) deep, in front lining pieces. Turn in lining and sew to hem allowance of fronts. Remove straight pins and press extra length of lining down. Sew remaining front edges of lining in place. Above sleeve hems, pin a fold, approx. 1 cm (3/8 in) deep, in lining. Turn in sleeve lining and sew to hem allowance. Lay extra length of lining down and press.

Work buttonholes in right front as marked.

Additional Information:

Burda patterns do not include seam and hem allowances. We recommend adding 1-2 cm (3/8 - 3/4 inch) for seams and 2-5 cm (3/4 - 2 inch/es) for hems. Refer to your specific pattern instructions for exact measurements.

The fabric requirements are based on the fabric used for the original designs. These amounts will change if you use fabric of a different width. The pattern of the fabric determines whether all the pieces must be cut in the same direction or whether some can be reversed to save fabric.

The cutting layout printed with the instructions shows the best way to place the pattern pieces on our original fabric. Fold the fabric double with the right side facing in. The fabric then has a fold edge and a selvedge edge. When cutting from a single fabric layer, the right side should face up.

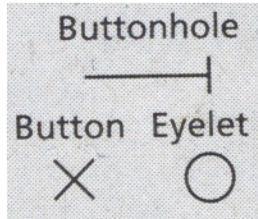
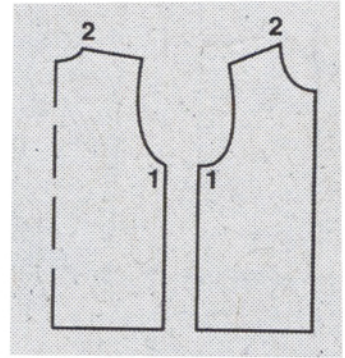
Pattern pieces which are shown in the cutting layout with broken outlines should be pinned to the fabric with their printed side facing down.

Grey shaded areas in the cutting layout indicate which pieces are to be interfaced.

Transfer the pattern piece lines to the wrong side of your fabric with burda dressmaker's carbon paper. Hand-baste along lines (e.g. for pockets or centre front) to make them visible on the right side of the fabric.

Key Symbols:

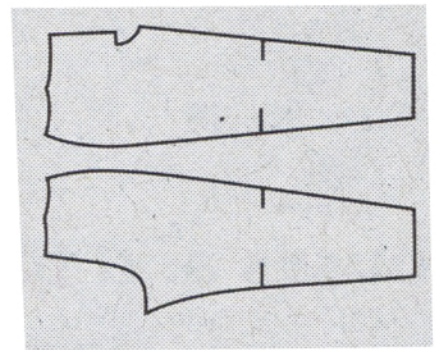
Seam numbers
show where pattern pieces must be sewn together. Match pieces with the same numbers.



Seam marks
on long seams. Match the small symbols to one another.



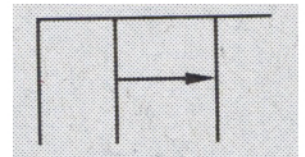
Presser foot
is the symbol for seam and top-stitching lines.



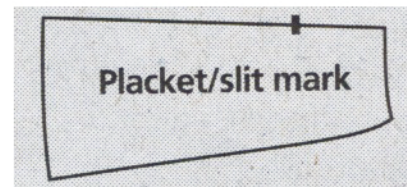
Scissors
indicate edges to be cut without seam allowances and also slash lines, e.g. pocket openings.



Pleat symbol
Fold pleat in direction of arrow.



Placket/slit mark
Indicates beginning/end of placket/slit.



Gather
Ease
Stretch

