

127 Skirt

Burda sizes 34, 36, 38, 40, 42

Skirt length 66 cm (26 ins)
(waistband joining = waist)

Materials

Houndstooth fabric,
width: 140 cm (55 in)
length: 0.80 m (7/8 yd) for all sizes.

Lining,
width: 140 cm (55 in)
length: 0.75 m (7/8 yd).

Petersham ribbon (for waistband), 2.5 cm (1 in)
wide and 1.50 – 1.55 – 1.60 – 1.70 – 1.75 m (1 3/4
– 1 3/4 – 1 3/4 – 1 7/8 – 2 yds) long.

1 invisible zip, 22 cm (9 ins) long.

1 button.

Recommended fabrics: Skirt fabrics with some
body, of wool or blends.

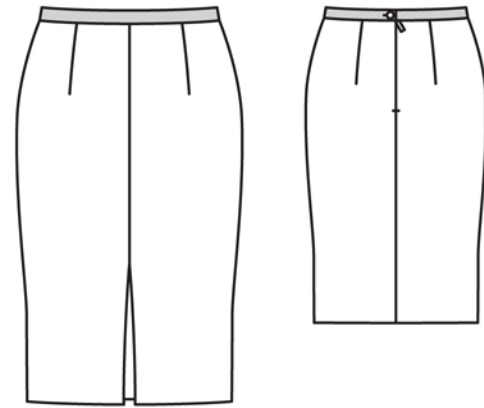
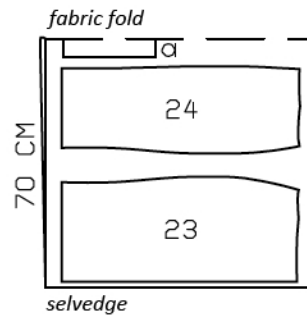
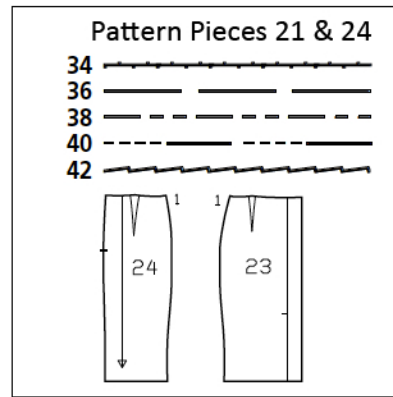
Preparations

Print the pattern out on letter or A4 sized paper.
It is **very** important to not scale the document.
Your pattern will print on multiple pages, which
you will then tile together. Arrange the sheets on
a large, hard and flat surface matching up the
numbers and letters (i.e. 6A to 6A). Cut or fold
one of the sides and match the edge to it's cor-
responding side. Then, tape down in place so paper
is secure.

Trace the pattern pieces from the pattern sheet
following the lines and markings for style 127 and
your size.

**burda style magazine patterns do not have seam
allowance included.**

Seam and hem allowance to be added:
Seams and edges 1.5 cm (5/8 in), inside pleat
seams 1 cm (3/8 in), hem 4 cm (1 5/8 ins) (also
on pleat underlay).



Cut from a double layer of
fabric, right side facing in.

Cutting Out

Houndstooth:
23 front skirt panel 2x
24 back skirt panel 2x

Draft the following piece NOT included in the pattern:
a) pleat underlay, 26 cm (10 1/4 ins) long, 10 cm (4 ins) wide.

Lining: piece 23 without pleat and also piece 24.

Sewing

Stitch front and back darts. Press darts toward centre.

Stitch centre front seam from upper edge to seam mark and baste pleat
below seam mark. Press seam and pleat allowances open. Lay pleat under-
lay over pleat on inside. Stitch vertical edges together, ending approx. 8 cm
(3 1/4 ins) above hem line.

Sew invisible zip to back opening edges, see the "Helpful Hint" on page 3.
Stitch centre back seam from lower edge to zip.

Stitch side seams.

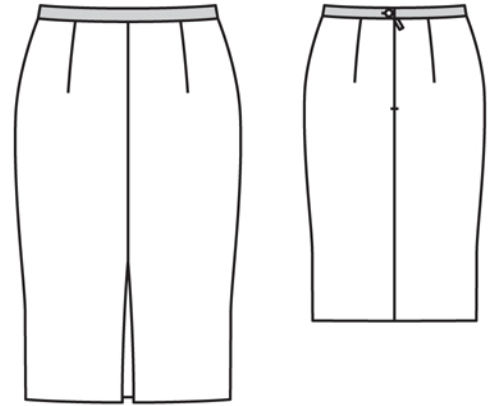
Stitch darts and seams of lining, leaving opening for zip. Leave a vent,
approx. 30 cm (12 ins) long, open at lower end of centre back seam. Place
lining inside skirt, with wrong sides facing, and baste to upper edge of skirt.
Turn in lining and sew to zip tapes.

Sewing Continued...

Waistband: Turn in one end of petersham ribbon, 1 cm (3/8 in) wide, and press. Measure 70 – 74 – 78 – 82 – 86 cm (27 3/4 – 29 1/4 – 30 3/4 – 32 1/2 – 34 ins) from this end and mark. Lay petersham ribbon on inside upper edge of skirt, over seam allowances, so that pressed end extends at right back edge of opening, 4 cm (1 5/8 ins) wide, and seam mark meets left edge of opening. Edgestitch lower edge of ribbon in place. Fold ribbon over left edge of opening to outside. Pin ribbon edges together, catching seam allowance of skirt. Turn in end of ribbon. Edgestitch ribbon edges together. Work button-hole in left back end of waistband.

Turn hem allowance of skirt and pleat underlay to inside and sew by hand. Stitch remaining inside pleat seams, down to hem edge. Turn bottom ends of allowances diagonally under and sew together.

Hem lining so that it is approx. 2 cm (3/4 in) shorter than skirt. Hem vent narrowly.





These special zippers come in various lengths. The zipper should be at least 2 cm (3/4 in) longer than the slit. It is sewn in place before the seam below the slit is stitched. A special presser foot is required to sew the zipper in place.

Sewing the zipper in place:

Open the zipper and push the coil back with your thumbnail to reveal the seam marking between the tape and the coil. Place the open zipper right side down on the right fabric side of one slit edge.

In order to stitch the zipper in place exactly along the marked seam line, you must first calculate the distance between the tape edge and the fabric edge as follows: width of seam allowance minus 1 cm (3/8 in) tape width = distance from edge of fabric. This will yield a value of 5 mm (3/16 in) if the width of the seam allowance is 1.5 cm (5/8 in).

Pin the top end of the zipper tape in place, the calculated distance from the edge of the fabric. The bottom end of the zipper will extend past the marked end of the slit. Place the presser foot on the zipper so that the coil is in the notch to the right of the needle (1). Stitch zipper in place, from the top to the marked end of the slit. Close zipper.

Place the other zipper tape face down on the opposite slit edge and pin in place at the top. Open zipper again. Place the presser foot on the top end of the zipper so that the coil is in the notch to the left of the needle (2). Sew the zipper in place, from the top to the end of the slit. Close zipper.

Now stitch the seam below the zipper, from bottom to top. Turn the loose lower end of the zipper out of the way, over the seam allowance. Stitch as close as possible to the last stitches of the zipper seams. Trim away excess zipper and bind the end with a scrap of fabric.

Additional Information:

Burda patterns do not include seam and hem allowances. We recommend adding 1-2 cm (3/8 - 3/4 inch) for seams and 2-5 cm (3/4 - 2 inch/es) for hems. Refer to your specific pattern instructions for exact measurements.

The fabric requirements are based on the fabric used for the original designs. These amounts will change if you use fabric of a different width. The pattern of the fabric determines whether all the pieces must be cut in the same direction or whether some can be reversed to save fabric.

The cutting layout printed with the instructions shows the best way to place the pattern pieces on our original fabric. Fold the fabric double with the right side facing in. The fabric then has a fold edge and a selvedge edge. When cutting from a single fabric layer, the right side should face up.

Pattern pieces which are shown in the cutting layout with broken outlines should be pinned to the fabric with their printed side facing down.

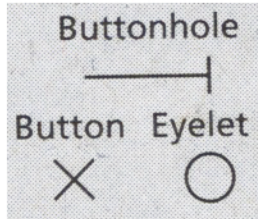
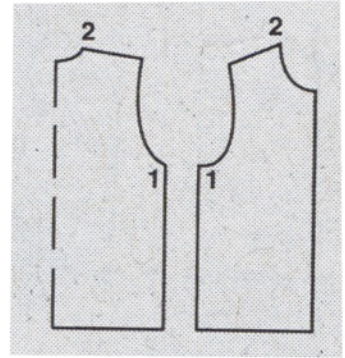
Grey shaded areas in the cutting layout indicate which pieces are to be interfaced.

Transfer the pattern piece lines to the wrong side of your fabric with burda dressmaker's carbon paper. Hand-baste along lines (e.g. for pockets or centre front) to make them visible on the right side of the fabric.

Key Symbols:

Seam numbers

show where pattern pieces must be sewn together. Match pieces with the same numbers.



Seam marks

on long seams. Match the small symbols to one another.



Presser foot is the symbol for seam and top-stitching lines.



Scissors

indicate edges to be cut without seam allowances and also slash lines, e.g. pocket openings.



Pleat symbol

Fold pleat in direction of arrow.



Placket/slit mark

Indicates beginning/end of placket/slit.



Gather
Ease
Stretch

