

### 123 Dress

Burda sizes 36, 38, 40, 42, 44

Length from waist 66 cm (26 ins)

### Materials

Wool flannel,  
width: 150 cm (59 in)  
length: 3.40 m (3 3/4 yds) for all sizes.

Interfacing.

Vilene Bias Tape. 1 invisible zip, 60 cm (24 ins) long.

Recommended fabrics: Dress fabrics of wool or blends.

### Preparations

Print the pattern out on letter or A4 sized paper. It is very important to not scale the document. Your pattern will print on multiple pages, which you will then tile together. Arrange the sheets on a large, hard and flat surface matching up the numbers and letters (i.e. 6A to 6A). Cut or fold one of the sides and match the edge to its corresponding side. Then, tape down in place so paper is secure.

Trace the pattern pieces from the pattern sheet following the lines and markings for style 123 and your size.

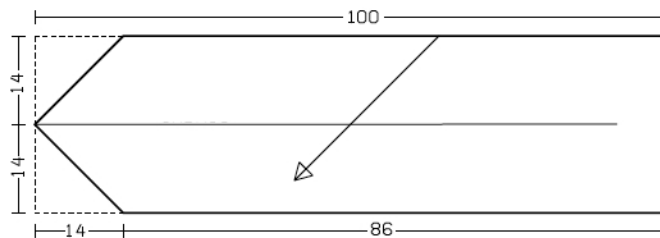
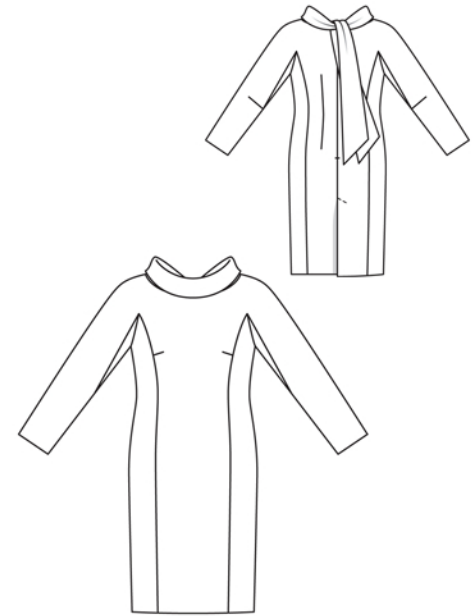
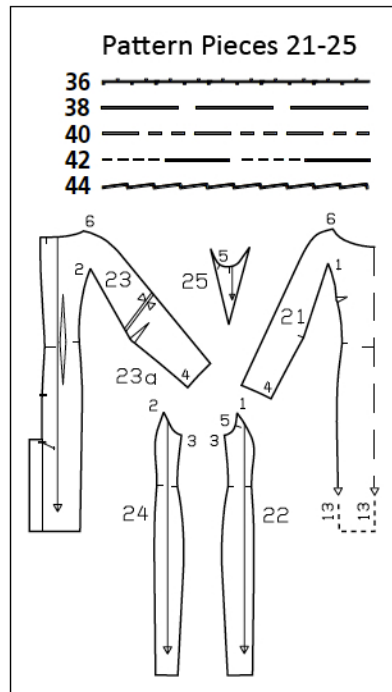
Diagram:

Follow the diagram to make a full-sized pattern piece for the collar with integrated scarf (a).

**burda style magazine patterns do not have seam allowance included.**

Seam and hem allowance to be added:

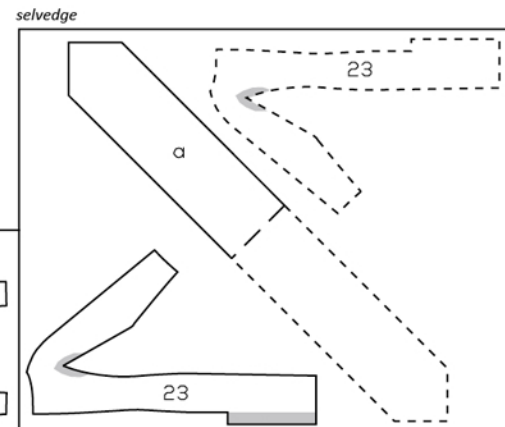
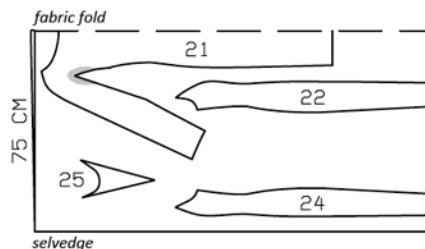
Seams and edges 1.5 cm (5/8 in), centre back seam and zip opening 2.5 cm (1 in), hem and sleeve hems 4 cm (1 5/8 ins).



Diagram

Measurements in cm

Fold the fabric as shown in the pattern layout. Right side faces in on a double layer of fabric. Right side faces up on a single layer of fabric.



### Cutting Out

- 21 centre front with sleeve, on a fold 1x
- 22 side front 2x
- 23 centre back with sleeve 2x
- 24 side back 2x
- 25 sleeve gusset 2x
- a) collar with scarf, according to diagram, cut 1, on a fold.

Interfacing: See pattern layout. Iron Vilene Bias Tape to wrong side of armhole edges on side front and back pieces and to wrong side of neck edge.

## Sewing

Stitch all darts. Press bust darts and sleeve darts down. Press back darts toward centre.

Stitch side fronts (seam number 1) to centre front, exactly from corner. Stitch side backs (seam number 2) to centre backs, exactly from corner. Clip allowances of centre front and centre back pieces into each corner to end of seam. Press seam allowances open. Stitch side seams. Stitch lower sleeve seams, from lower edges to seam mark – seam mark matches dart. Press seam allowances open.

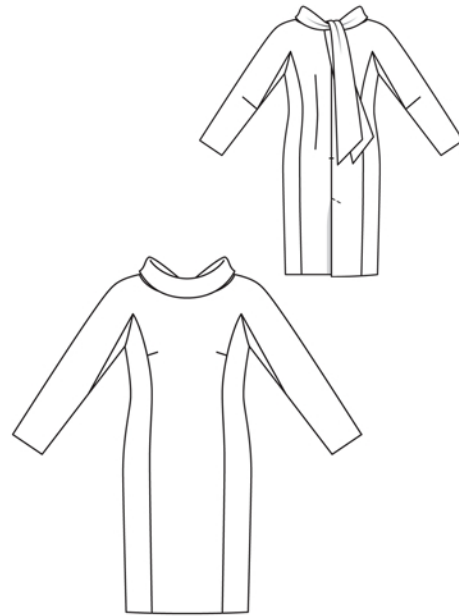
Stitch front lengthwise edge of each sleeve gusset to integrated sleeve fronts, from corner (seam number 1) to top end of lower sleeve seam. Stitch back lengthwise edge of each sleeve gusset to integrated sleeve backs, from corner (seam number 2). Press seam allowances open. Then stitch upper edges of sleeve gussets to armhole edges of side front and back pieces.

Stitch shoulder seams (seam number 6) and top sleeve seams all in one.

Sew the invisible zip to the back opening edges, see the “Helpful Hint” on next page.

Stitch the centre back seam from the vent to the zip. Press the seam allowances open. Press the facing on right edge to inside. Lay the facing of the left edge onto the right back and press the seam allowance of the left back edge under, above the vent, tapering as you go, to avoid the need of clipping allowance. Press allowance on vertical edge of the underlap to inside and stitch. Topstitch right centre back piece at an angle as marked, catching the underlap.

At back opening edges, turn allowances with zip to outside and stitch to neck edge, as far as seam mark. Trim seam allowances and clip allowances at seam mark. Turn allowances on slit edges to inside.



Stitch the collar right sides together with neck edge of dress, matching centres and leaving scarf extending from each seam mark, in back. Press seam allowances onto collar. Fold collar and scarf on fold line, right side facing in. Stitch edges of scarf together, turning allowances of collar joining seam down again. Trim allowances, trimming diagonally across corners. Turn scarf right side out. Turn in inside edge of collar and baste over joining seam. Work from right side of garment to stitch in line of joining seam.

At hem edge, turn facing at back vent back again. Press hem allowance to inside and sew by hand. Turn facing to inside again and sew to hem allowance. Hem the sleeves.



These special zippers come in various lengths. The zipper should be at least 2 cm (3/4 in) longer than the slit. It is sewn in place before the seam below the slit is stitched. A special presser foot is required to sew the zipper in place.

### **Sewing the zipper in place:**

Open the zipper and push the coil back with your thumbnail to reveal the seam marking between the tape and the coil. Place the open zipper right side down on the right fabric side of one slit edge.

In order to stitch the zipper in place exactly along the marked seam line, you must first calculate the distance between the tape edge and the fabric edge as follows: width of seam allowance minus 1 cm (3/8 in) tape width = distance from edge of fabric. This will yield a value of 5 mm (3/16 in) if the width of the seam allowance is 1.5 cm (5/8 in).

Pin the top end of the zipper tape in place, the calculated distance from the edge of the fabric. The bottom end of the zipper will extend past the marked end of the slit. Place the presser foot on the zipper so that the coil is in the notch to the right of the needle (1). Stitch zipper in place, from the top to the marked end of the slit. Close zipper.

Place the other zipper tape face down on the opposite slit edge and pin in place at the top. Open zipper again. Place the presser foot on the top end of the zipper so that the coil is in the notch to the left of the needle (2). Sew the zipper in place, from the top to the end of the slit. Close zipper.

Now stitch the seam below the zipper, from bottom to top. Turn the loose lower end of the zipper out of the way, over the seam allowance. Stitch as close as possible to the last stitches of the zipper seams. Trim away excess zipper and bind the end with a scrap of fabric.

## Additional Information:

**Burda patterns do not include seam and hem allowances.** We recommend adding 1-2 cm (3/8 - 3/4 inch) for seams and 2-5 cm (3/4 - 2 inch/es) for hems. Refer to your specific pattern instructions for exact measurements.

The fabric requirements are based on the fabric used for the original designs. These amounts will change if you use fabric of a different width. The pattern of the fabric determines whether all the pieces must be cut in the same direction or whether some can be reversed to save fabric.

The cutting layout printed with the instructions shows the best way to place the pattern pieces on our original fabric. Fold the fabric double with the right side facing in. The fabric then has a fold edge and a selvedge edge. When cutting from a single fabric layer, the right side should face up.

Pattern pieces which are shown in the cutting layout with broken outlines should be pinned to the fabric with their printed side facing down.

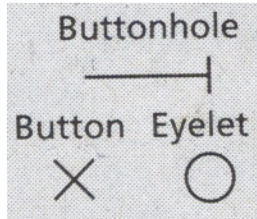
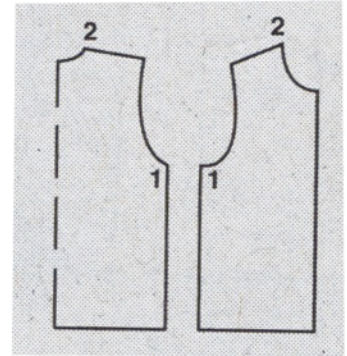
Grey shaded areas in the cutting layout indicate which pieces are to be interfaced.

Transfer the pattern piece lines to the wrong side of your fabric with burda dressmaker's carbon paper. Hand-baste along lines (e.g. for pockets or centre front) to make them visible on the right side of the fabric.

## Key Symbols:

### Seam numbers

show where pattern pieces must be sewn together. Match pieces with the same numbers.

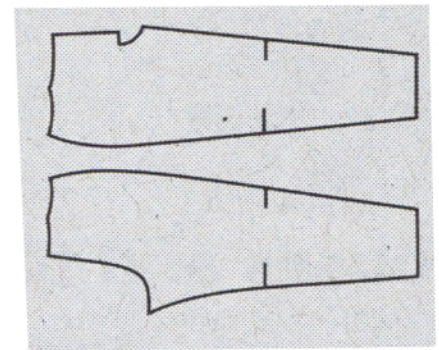


### Seam marks

on long seams. Match the small symbols to one another.



**Presser foot** is the symbol for seam and top-stitching lines.



### Scissors

indicate edges to be cut with-out seam allowances and alsoslash lines, e. g. pocket openings.



### Pleat symbol

Fold pleat in direction of arrow.



### Placket/slit mark

Indicates beginning/ end of placket/slit.



**Gather**  
**Ease**  
**Stretch**

