

### 116 Dress

Burda sizes 38, 40, 42, 44, 46

Length from waist 56 cm (22 1/4 ins)

### Materials

Crêpe satin with crosswise stretch,  
width: 140 cm (55 in)

length: 1.60 – 1.60 – 1.70 – 2.45 – 2.45 m  
(1 3/4 – 1 3/4 – 1 7/8 – 2 3/4 – 2 3/4 yds).

Recommended fabrics: Lightweight, softly draping dress fabrics. Fabrics with some elastane are ideal.

### Preparations

Print the pattern out on letter or A4 sized paper. It is **very important** to not scale the document. Your pattern will print on multiple pages, which you will then tile together. Arrange the sheets on a large, hard and flat surface matching up the numbers and letters (i.e. 6A to 6A). Cut or fold one of the sides and match the edge to its corresponding side. Then, tape down in place so paper is secure.

Trace the pattern pieces from the pattern sheet following the lines and markings for style 116 and your size. Trace the pocket piece from piece 21 as a separate pattern piece – it is the same for all sizes.

**burda style magazine patterns do not have seam allowance included.**

Seam and hem allowance to be added:

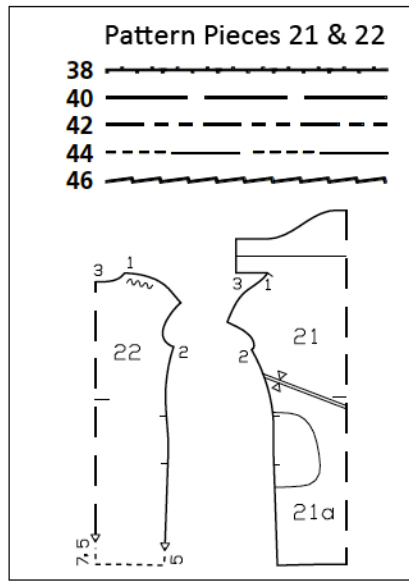
Seams and edges 1.5 cm (5/8 in), pocket opening edge (front) 2 cm (3/4 in), hem 4 cm (1 5/8 ins).

### Cutting Out

Use the matte side of the fabric as the right side.  
21 front with integrated collar,  
on a fold 1x  
pocket piece 2x  
22 back, on a fold 1x

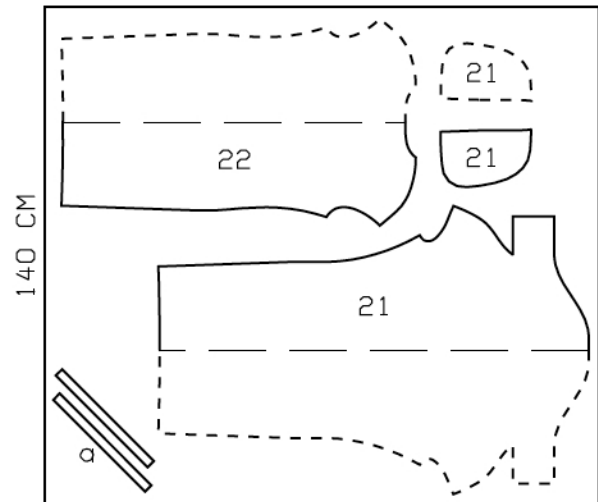
Draft the following pieces NOT included:

a) 2 bias strips to bind edges of armholes, 37 – 38 – 39 – 41 – 42 cm (14 1/2 – 15 – 15 1/2 – 16 1/4 – 16 1/2 ins) long, 3 cm (1 1/4 ins) wide (incl. allowances).



Sizes 38-42

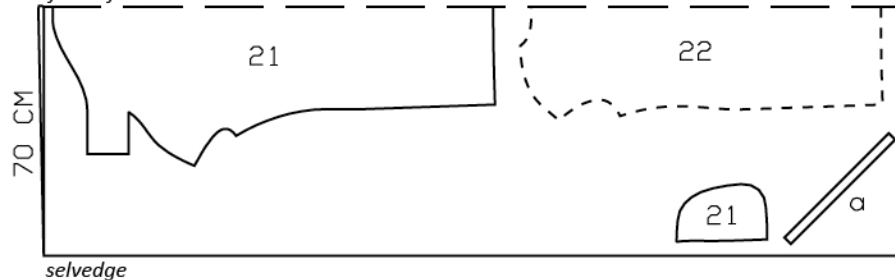
selvedge



Right side faces in on a double layer of fabric.  
Right side faces up on a single layer of fabric.

Sizes 44, 46

fabric fold



## Sewing

Stitch each shoulder seam up to seam mark at seam number 1, beginning stitching exactly at marked armhole. Clip allowance of front into corner. Stitch centre back seam of integrated collar pieces. Fold collar on fold line, wrong side facing in. Do not press fold edge. Baste inside edge under collar joining edge, from corner to corner. Stitch collar to back neck edge, from corner to corner. Press seam allowances onto back. Sew to shoulder seam allowances.

Trim away seam allowances on armhole edges. Fold binding strips in half lengthwise and press, right side facing out. Unfold strip out flat again. Now fold each long edge in to the pressed fold and press again. Unfold pressed strips. Pin to inside of armhole edges. Stitch strips in place, along pressed folds. Fold binding strips over edges and baste. Topstitch from right side, close to edge.

Stitch side seams, not stitching across pocket openings. Press seam allowances open. Sew top ends of seam allowances in place.

On each front pocket opening edge, turn in allowance to a width of 1 cm (3/8 in) and stitch. Pin pocket pieces to allowances of back. Stitch pocket pieces in place – along seam line on pocket opening edge and close to side seam above and below pocket opening. Press pocket pieces onto front. To stitch pocket pieces, pin the paper pattern piece to the front and stitch along the paper pattern piece edge. Stitch horizontally at bottom end of each pocket opening.

Press hem allowance to inside and sew in place by hand.



## Additional Information:

**Burda patterns do not include seam and hem allowances.** We recommend adding 1-2 cm (3/8 - 3/4 inch) for seams and 2-5 cm (3/4 - 2 inch/es) for hems. Refer to your specific pattern instructions for exact measurements.

The fabric requirements are based on the fabric used for the original designs. These amounts will change if you use fabric of a different width. The pattern of the fabric determines whether all the pieces must be cut in the same direction or whether some can be reversed to save fabric.

The cutting layout printed with the instructions shows the best way to place the pattern pieces on our original fabric. Fold the fabric double with the right side facing in. The fabric then has a fold edge and a selvedge edge. When cutting from a single fabric layer, the right side should face up.

Pattern pieces which are shown in the cutting layout with broken outlines should be pinned to the fabric with their printed side facing down.

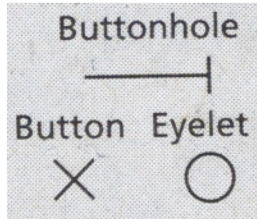
Grey shaded areas in the cutting layout indicate which pieces are to be interfaced.

Transfer the pattern piece lines to the wrong side of your fabric with burda dressmaker's carbon paper. Hand-baste along lines (e.g. for pockets or centre front) to make them visible on the right side of the fabric.

## Key Symbols:

### Seam numbers

show where pattern pieces must be sewn together. Match pieces with the same numbers.



### Seam marks

on long seams. Match the small symbols to one another.



**Presser foot** is the symbol for seam and top-stitching lines.



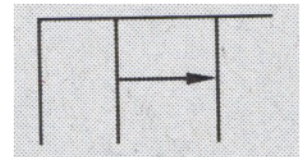
### Scissors

indicate edges to be cut without seam allowances and also slash lines, e. g. pocket openings.



### Pleat symbol

Fold pleat in direction of arrow.



### Placket/slit mark

Indicates beginning/ end of placket/slit.



**Gather**  
**Ease**  
**Stretch**

