

113 Top

Burda sizes 36, 38, 40, 42, 44

Back length approx. 68 cm (27 ins)

Materials

Fine stretch jersey,

width: 150 cm (59 ins)

length: 1.65 – 1.65 – 2.00 – 2.00 – 2.00 m

(1 7/8 – 1 7/8 – 2 1/4 – 2 1/4 – 2 1/4 yds).

Interfacing.

A twin sewing machine needle.

Recommended fabrics: Fine stretch jersey. Use only stretch jersey fabrics.

Preparations

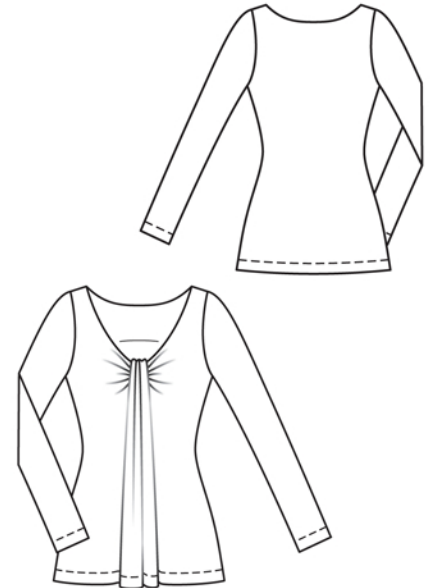
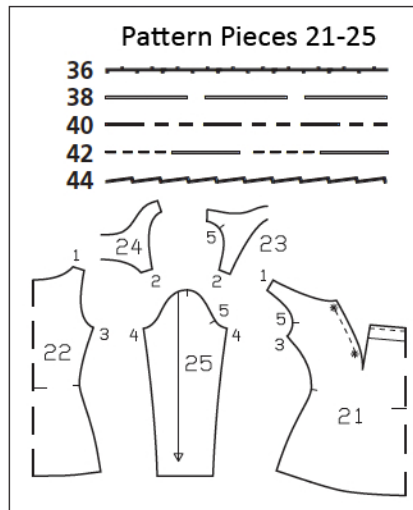
Print the pattern out on letter or A4 sized paper. It is **very important** to not scale the document. Your pattern will print on multiple pages, which you will then tile together. Arrange the sheets on a large, hard and flat surface matching up the numbers and letters (i.e. 6A to 6A). Cut or fold one of the sides and match the edge to its corresponding side. Then, tape down in place so paper is secure.

Trace the pattern pieces from the pattern sheet following the lines and markings for style 113 and your size.

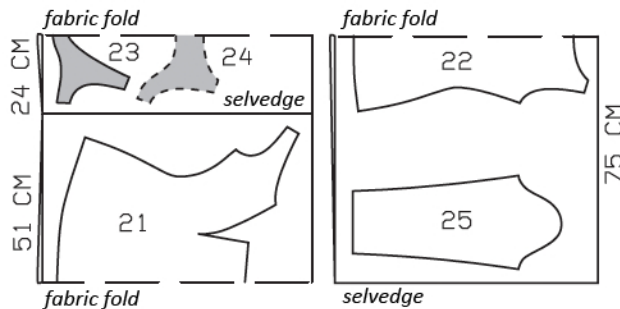
burda style magazine patterns do not have seam allowance included.

Seam and hem allowance to be added:

Seams and edges 1.5 cm (5/8 in), hem 4 cm (15/8 ins), sleeve hems 4 cm (1 5/8 ins) (flare sleeve hem allowance).

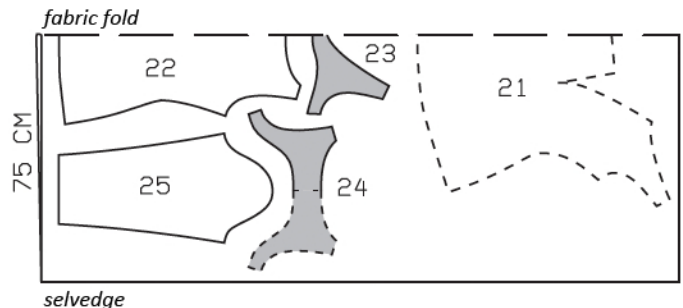


Sizes 36, 38



Fold the fabric as shown in the pattern layout, right side facing in.

Sizes 40-44



Cutting Out

- 21 front, on a fold 1x
- 22 back, on a fold 1x
- 23 front neck facing, on a fold 1x
- 24 back neck facing, on a fold 1x
- 25 sleeve 2x

Interfacing: See shaded area on pattern layout.

Sewing

Note: Stitch seams on stretch fabrics with a special stretch stitch or at a narrow zigzag setting. Stitch hems with a twin machine needle to keep them elastic.

Front: Cut darts along centre, up to 4 cm (1 5/8 ins) before pointed end. Gather side seam edges of darts to a length of 5.5 – 6 – 6.5 – 7 – 7.5 cm (2 1/4 – 2 3/8 – 2 5/8 – 2 3/4 – 3 ins), between asterisks. Pin darts – marked neck edge meets fold line. Stitch darts below fold line. Press darts open, pressing points of darts flat. Fold front at centre front, wrong side facing in. Pin dart seams together. Stitch along line of dart seam, from fold line to end of gathering. Unfold front. Pin centre front to dart seam. Baste straight upper front edges together, then turn down on fold line and pin.

Stitch side seams and shoulder seams. Press shoulder seams open. Neaten side seam allowances together and press onto back. Stitch side seams and shoulder seams of facing.

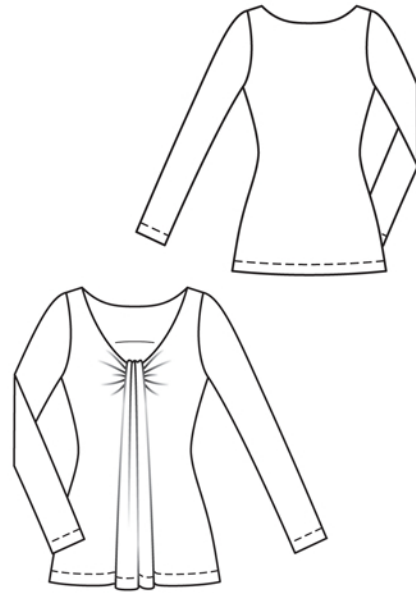
Stitch neck facing to neck edge, right sides together. Trim seam allowances. Turn facing up and stitch to seam allowances close to seam. Turn facing to inside and baste to armhole edges. Sew inside facing edge to seams.

Remove pins from front and turn turned-down end up again. Gather upper edge to a length of 4 cm (1 5/8 ins). Turn gathered edge to inside on fold line and sew to facing.

Stitch sleeve seams. Press sleeve hem allowances to inside. Work from right side of garment to stitch hem 2.5 cm (1 in) from lower edge, using the twin machine needle.

Set in sleeves.

Press hem allowance to inside. Work from outer side of garment to stitch hem with the twin machine needle.



Additional Information:

Burda patterns do not include seam and hem allowances. We recommend adding 1-2 cm (3/8 - 3/4 inch) for seams and 2-5 cm (3/4 - 2 inch/es) for hems. Refer to your specific pattern instructions for exact measurements.

The fabric requirements are based on the fabric used for the original designs. These amounts will change if you use fabric of a different width. The pattern of the fabric determines whether all the pieces must be cut in the same direction or whether some can be reversed to save fabric.

The cutting layout printed with the instructions shows the best way to place the pattern pieces on our original fabric. Fold the fabric double with the right side facing in. The fabric then has a fold edge and a selvedge edge. When cutting from a single fabric layer, the right side should face up.

Pattern pieces which are shown in the cutting layout with broken outlines should be pinned to the fabric with their printed side facing down.

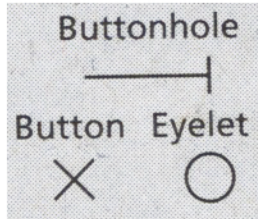
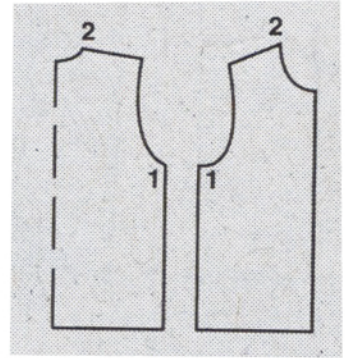
Grey shaded areas in the cutting layout indicate which pieces are to be interfaced.

Transfer the pattern piece lines to the wrong side of your fabric with burda dressmaker's carbon paper. Hand-baste along lines (e.g. for pockets or centre front) to make them visible on the right side of the fabric.

Key Symbols:

Seam numbers

show where pattern pieces must be sewn together. Match pieces with the same numbers.



Seam marks

on long seams. Match the small symbols to one another.



Presser foot is the symbol for seam and top-stitching lines.



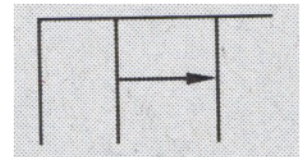
Scissors

indicate edges to be cut without seam allowances and also slash lines, e.g. pocket openings.



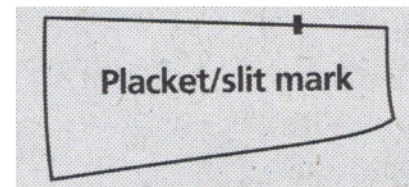
Pleat symbol

Fold pleat in direction of arrow.



Placket/slit mark

Indicates beginning/ end of placket/slit.



Gather
Ease
Stretch

