

125 Jacket

Burda sizes 34, 36, 38, 40, 42

Back length approx. 57 cm (22 1/2 ins)

3/4-sleeves, approx. 48 cm (19 ins) long

Materials

Stretch satin, with widthwise stretch,
width: 140 cm (55 ins)

length: 1.00 – 1.00 – 1.05 – 1.05 – 1.05 m
(1 1/8 – 1 1/8 – 1 1/4 – 1 1/4 – 1 1/4 yds).

Tubular rib knit fabric, lying double,
width: 50 cm (20 ins)

length: 0.40 – 0.40 – 0.40 – 0.40 – 0.55 m
(1/2 – 1/2 – 1/2 – 1/2 – 3/4 yd).

Lining,

width: 140 cm (55 ins)

length: 0.85 – 0.85 – 0.90 – 0.90 – 0.90 m (1 yd).

Vilene Bias Tape/stay tape.

1 separating two-way zip, 35 cm (14 ins) long

Recommended fabrics: Lightweight jacket fabrics,
with or without elastane, combine with rib knit
fabric.

Preparations

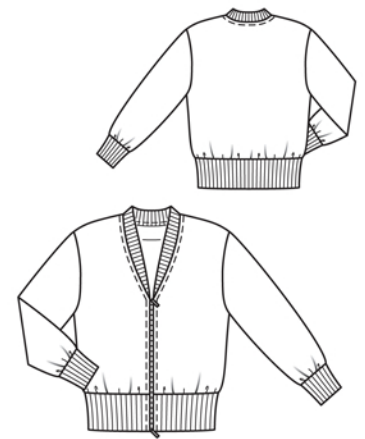
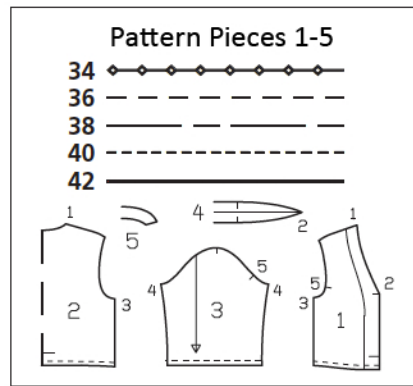
Print the pattern out on letter or A4 sized paper.
It is **very** important to not scale the document.
Your pattern will print on multiple pages, which
you will then tile together. Arrange the sheets on
a large, hard and flat surface matching up the
numbers and letters (i.e. 6A to 6A). Cut or fold
one of the sides and match the edge to it's cor-
responding side. Then, tape down in place so paper
is secure.

Trace the pattern pieces from the pattern sheet
following the lines and markings for style 125 and
your size. Trace the front facing from piece 1 as a
separate pattern piece.

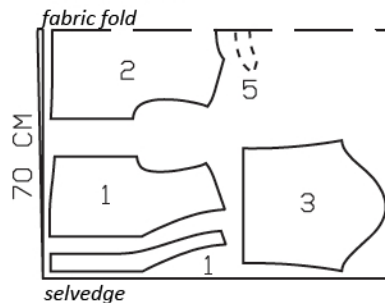
**burda style magazine patterns do not have seam
allowance included.**

Seam and hem allowance to be added:

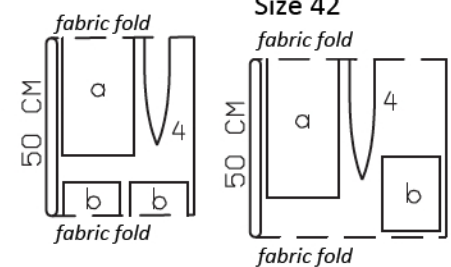
Seams and edges 1.5 cm (5/8 in), sleeve bands 1
cm (3/8 in).



Stretch Satin,
140cm wide
Sizes 34-42



Tubular Knit,
50/100cm wide
Sizes 34-40



Cut from a double layer of fabric, right side facing in.

Cutting Out

Satin:

- 1 front 2x
- front facing 2x
- 2 back, on a fold 1x
- 3 sleeve 2x
- 5 back facing, on a fold 1x

Rib knit:

- 4 neck band, on a fold 1x

Draft the following pieces NOT included in the pattern:

- a) hem band, 62 – 66 – 70 – 74 – 78 cm (24 1/2 – 26 – 27 3/4 – 29 1/4 – 30 3/4 ins) long, 20 cm (8 ins) wide, finished width 10 cm (4 ins),
- b) 2 sleeve bands, 18.5 – 19 – 19.5 – 20.5 – 21 cm (7 1/4 – 7 1/2 – 7 3/4 – 8 1/4 – 8 3/8 ins) long, 16 cm (6 1/2 ins), finished width 8 cm (3 1/4 ins).

Lining: pieces 1 and 2 minus width of facing, piece 3.

Vilene Bias Tape/stay tape: Iron to wrong side of neck and armhole edges.

Sewing

Stitch shoulder seams. Press seam allowances open.

On neck band, fold allowance on each pointed end to wrong side and press. Fold neck band on fold line, wrong side facing in. Stitch neck band edges together to neck edge, stretched slightly to match. Leave allowances on front edges extending. Leave neck band lying on jacket for the time being.

Stitch side seams.

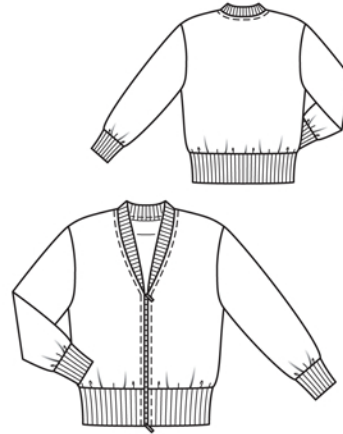
Gather lower edge of front and back to 86 – 90 – 94 – 98 – 102 cm (34 – 35 1/2 – 37 – 38 3/4 – 40 1/4 ins). Fold waistband in half lengthwise. At waistband ends, mark fold edge with basting thread. Unfold waistband again and stitch to lower jacket edge, stretching waistband. Turn waistband down and turn seam allowances onto jacket.

Separate zip halves. Turn upper ends of zip tapes under. Lay halves of zip face down on right side of front edges of fronts and waistband, to marked centres of waistband, so that teeth of zip lie on garment piece, next to seam line, and zip tapes lie on seam allowances. Stitch zip tapes in place along seam lines on front edges.

Stitch sleeve seams. Gather lower sleeve edges to 27 – 28 – 29 – 30 – 31 cm (10 3/4 – 11 1/8 – 11 1/2 – 12 – 12 1/4 ins). Stitch ends of each sleeve band together. Fold sleeve bands in half and stitch to lower sleeve edges, stretched to match. Press seam allowances up.

Set in sleeves.

Stitch front facings to front lining pieces and stitch back facing to back lining piece. Press seam allowances onto lining. Stitch side seams, shoulder seams, and sleeve seams, leaving approx. 15 cm (6 ins) open in centre of one side seam. Gather lower edge of facing and lining as for jacket. Gather lower sleeve edges. Set in sleeve linings.



At each sleeve seam, turn sleeve lining under and pin to sleeve band attachment seam with a single straight pin. Reach between outer fabric and lining to first pull out lower edges of one sleeve. Remove the pin but keep hold of the edges. Stitch lower edges of sleeve and lining together, right sides facing, catching sleeve band. Work from right side of garment to pull sleeve out again and the sleeve lining will be pulled into place. Stitch lining of other sleeve in same manner. Sew opening in lining seam closed.

Topstitch 7 mm (1/4 in) from front and neck edges.

Additional Information:

Burda patterns do not include seam and hem allowances. We recommend adding 1-2 cm (3/8 - 3/4 inch) for seams and 2-5 cm (3/4 - 2 inch/es) for hems. Refer to your specific pattern instructions for exact measurements.

The fabric requirements are based on the fabric used for the original designs. These amounts will change if you use fabric of a different width. The pattern of the fabric determines whether all the pieces must be cut in the same direction or whether some can be reversed to save fabric.

The cutting layout printed with the instructions shows the best way to place the pattern pieces on our original fabric. Fold the fabric double with the right side facing in. The fabric then has a fold edge and a selvedge edge. When cutting from a single fabric layer, the right side should face up.

Pattern pieces which are shown in the cutting layout with broken outlines should be pinned to the fabric with their printed side facing down.

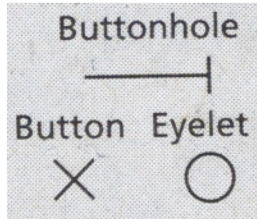
Grey shaded areas in the cutting layout indicate which pieces are to be interfaced.

Transfer the pattern piece lines to the wrong side of your fabric with burda dressmaker's carbon paper. Hand-baste along lines (e.g. for pockets or centre front) to make them visible on the right side of the fabric.

Key Symbols:

Seam numbers

show where pattern pieces must be sewn together. Match pieces with the same numbers.



Seam marks

on long seams. Match the small symbols to one another.



Presser foot is the symbol for seam and top-stitching lines.



Scissors

indicate edges to be cut without seam allowances and also slash lines, e.g. pocket openings.



Pleat symbol

Fold pleat in direction of arrow.



Placket/slit mark

Indicates beginning/ end of placket/slit.



Gather
Ease
Stretch

