

101 Shirt

Burda sizes 36, 38, 40, 42, 44

Back length approx. 72 cm (28 1/2 ins)

Materials

Chambray,

width: 145 cm (57 ins)

length: 1.50 – 1.70 – 1.70 – 1.70 – 1.70 m

(1 3/4 – 1 7/8 – 1 7/8 – 1 7/8 – 1 7/8 yds).

Interfacing.

Sewing thread in a contrasting colour for topstitching.

9 buttons.

Recommended fabrics: Shirting.

Preparations

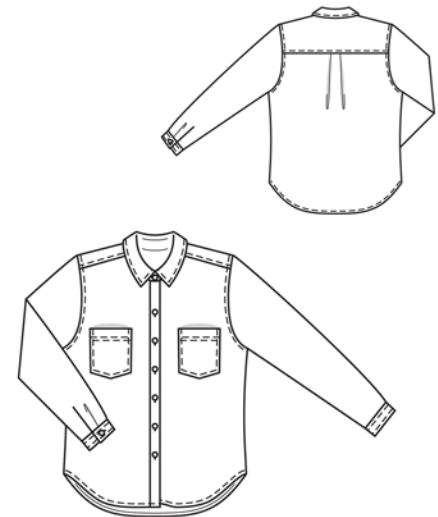
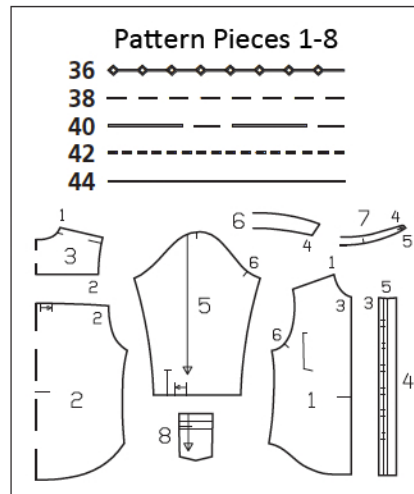
Print the pattern out on letter or A4 sized paper. It is **very important** to not scale the document. Your pattern will print on multiple pages, which you will then tile together. Arrange the sheets on a large, hard and flat surface matching up the numbers and letters (i.e. 6A to 6A). Cut or fold one of the sides and match the edge to its corresponding side. Then, tape down in place so paper is secure.

Trace the pattern pieces from the pattern sheet following the lines and markings for style 101 and your size. The buttonholes on piece 4 are marked for size 36. For the other sizes, mark the bottom buttonhole the same distance from lower edge as for size 36. The top buttonhole is the same for all sizes. Space the other buttonholes evenly in between.

burda style magazine patterns do not have seam allowance included.

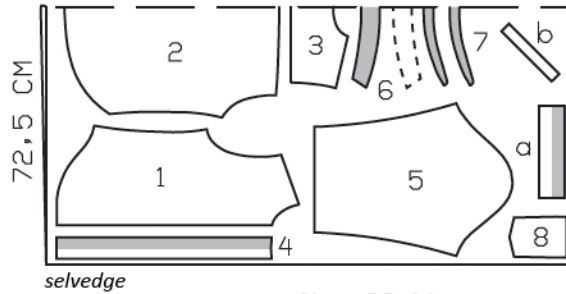
Seam and hem allowance to be added:

Seams, edges and hem 1.5 cm (5/8 in).



Size 36

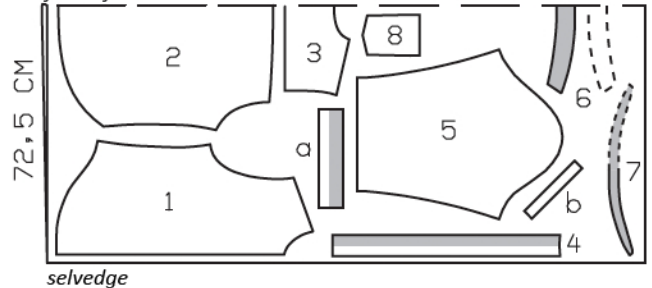
fabric fold



Cut from a double layer of fabric, right side facing in.

Sizes 38-44

fabric fold



Cutting Out

- 1 front 2x
- 2 back, on a fold 1x
- 3 yoke, on a fold 1x
- 4 front band 2x
- 5 sleeve 2x
- 6 collar, on a fold 2x
- 7 collar stand, on a fold 2x
- 8 pocket 2x

- b) 2 bias binding strips for sleeve vents, each 20 cm (8 ins) long, 3 cm (1 1/4 ins) wide (incl. allowances).

Interfacing: See shaded area on pattern layout. Iron interfacing to wrong side of under collar piece.

Draft the following pieces NOT included in the pattern:

- a) 2 cuffs, 26 – 26.5 – 27 – 27.5 – 28 cm (10 1/4 – 10 1/2 – 10 3/4 – 11 – 11 1/8 ins) long, 7 cm (3 ins) wide, finished width 3.5 cm (1 1/2 ins),

Sewing

Lay the pleats in the upper back edge in direction of arrows and baste the pleats in place.

Stitch the yoke to the front and back pieces. Press the seam allowances onto the yoke. Topstitch the yoke close to seams and again 7 mm (1/4 in) from seams.

Stitch front bands to vertical edges of fronts. Press the seam allowances of the band attachment seams and of the other long band edges onto the bands. Fold the bands to the inside on the fold line and press. Baste inside band edges in place. Topstitch the bands close to the attachment seams and the front edges.

On fronts and on back, turn hem allowances to inside, turn half under, press, and stitch.

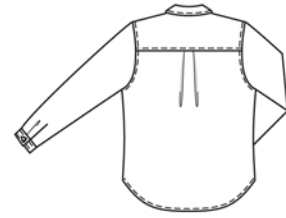
Slash the sleeve vents as marked. Spread cut edges open to a straight line and stitch to one long edge of the binding strip, as narrowly as possible. Press the binding strip over the attachment seam into the vent, fold to a width of 7 mm (1/4 in), turn inside edge under, and stitch to attachment seam. At inside upper end of vent, stitch diagonally across binding. On front vent edges, turn binding to inside and baste to lower edge.

Lay the pleats in the lower sleeve edges in direction of arrows and baste the pleats in place.

Stitch the sleeves to the armhole edges. Press the seam allowances onto the shirt. Topstitch the shirt close to the sleeve attachment seams and again 7 mm (1/4 in) from these seams.

Stitch the side seams and sleeve seams as continuous seams. Trim the seam allowances to a width of 7 mm (1/4 in), neaten together and press onto back. Sew bottom ends of seam allowances to hem edge.

Stitch the cuffs to the lower sleeve edges. Press seam allowances of attachment seams and of other long cuff edges onto cuffs. Fold the cuffs lengthwise, right side facing in, and stitch across the ends. Turn right side out. Sew inside edges in place. Topstitch 7 mm (1/4 in) from all edges of cuffs.



Collar with collar stand: Stitch the collar pieces right sides together along the outer edges. Trim the seam allowances. Turn collar right side out and press. Topstitch the collar edges. Lay the collar stand pieces right sides together, catching the collar between collar stands. Stitch along front and upper collar stand edges, beginning and ending in front, exactly at seam line of attachment edge. Trim seam allowances. Turn collar stand right side out. Stitch outer collar stand piece to neck edge of shirt. Press allowances onto collar stand. Turn edge of inside collar stand piece under and baste to attachment seam. Topstitch the collar stand close to all edges.

Patch pockets: Turn self-facing on upper edge of each pocket to inside and stitch as marked. Press allowances on side and lower edges to inside. Stitch pockets to fronts at marked placement lines.

Work buttonholes in right front band, in right end of collar stand, and in front ends of cuffs.

Additional Information:

Burda patterns do not include seam and hem allowances. We recommend adding 1-2 cm (3/8 - 3/4 inch) for seams and 2-5 cm (3/4 - 2 inch/es) for hems. Refer to your specific pattern instructions for exact measurements.

The fabric requirements are based on the fabric used for the original designs. These amounts will change if you use fabric of a different width. The pattern of the fabric determines whether all the pieces must be cut in the same direction or whether some can be reversed to save fabric.

The cutting layout printed with the instructions shows the best way to place the pattern pieces on our original fabric. Fold the fabric double with the right side facing in. The fabric then has a fold edge and a selvedge edge. When cutting from a single fabric layer, the right side should face up.

Pattern pieces which are shown in the cutting layout with broken outlines should be pinned to the fabric with their printed side facing down.

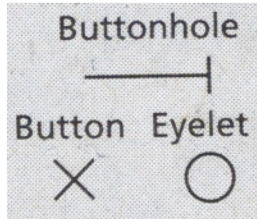
Grey shaded areas in the cutting layout indicate which pieces are to be interfaced.

Transfer the pattern piece lines to the wrong side of your fabric with burda dressmaker's carbon paper. Hand-baste along lines (e.g. for pockets or centre front) to make them visible on the right side of the fabric.

Key Symbols:

Seam numbers

show where pattern pieces must be sewn together. Match pieces with the same numbers.



Seam marks

on long seams. Match the small symbols to one another.



Presser foot is the symbol for seam and top-stitching lines.



Scissors

indicate edges to be cut without seam allowances and also slash lines, e.g. pocket openings.



Pleat symbol

Fold pleat in direction of arrow.



Placket/slit mark

Indicates beginning/end of placket/slit.



Gather
Ease
Stretch

