

152 Girl's Skirt

Height 128, 134, 140, 146, 152 cm

Skirt length 33 – 35 – 37 – 39 – 41 cm

Materials

Georgette,

width: 145 cm (57 ins)

length: 1.00 – 1.05 – 1.10 – 1.15 – 1.20 m

(1 1/8 – 1 1/4 – 1 1/4 – 1 3/8 – 1 3/8 yds).

Batiste for lining,

width: 140 cm (55 ins)

length: 0.85 – 0.90 – 0.95 – 1.00 – 1.05 m

(1 – 1 – 1 1/8 – 1 1/8 – 1 1/4 yds).

Tubular rib knit fabric, lying double, 35 cm (13 3/4 ins) wide: 0.15 m (1/4 yd) for all sizes.

Elastic, 2 cm (3/4 in) wide and 0.65 – 0.65 – 0.65 – 0.70 – 0.70 m (7/8 yd) long.

Recommended fabrics: Lightweight fabrics with some body. For long-lasting pleats, use fabrics with a high synthetic content for the pleated skirt piece.

Preparations

Follow the diagram to make full-sized pattern pieces for the skirt piece (a) and the skirt lining piece (b) as follows: on a large sheet of wrapping paper – the upper edge and the right edges must form a right angle – stretch a thread from the upper right corner to mark the radius (R) for the upper edge of the skirt piece and the radius (R1) for hem line (radius plus skirt length). Or measure the length of the skirt down from the waist edge at several points and then connect the points in an even curve to mark the hem edge.

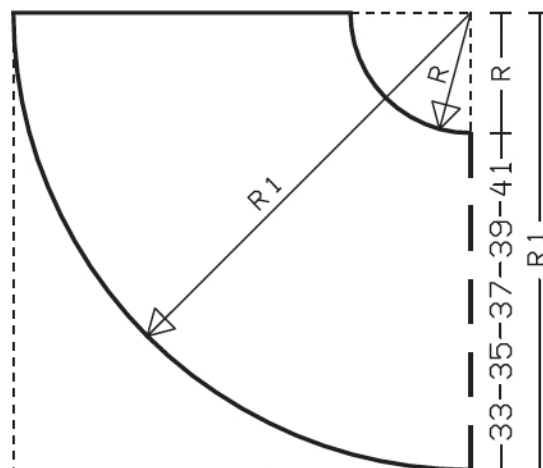
Add seam and hem allowances:

Seams and edges 1.5 cm (5/8 in). No allowances on hem edges – these edges are left unneaten.

Diagrams

Measurements in cm

Skirt panel



Radius for waist edge (R)

size 128: 12.2 cm, size

134: 12.5 cm

size 140: 12.9 cm, size

146: 13.5 cm

size 152: 14.2 cm

Radius for hem line (R1)

size 128: 45.2 cm, size

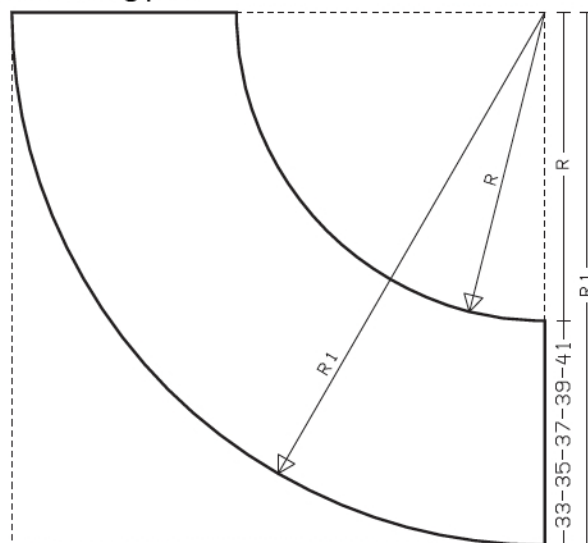
134: 47.5 cm

size 140: 49.9 cm, size

146: 52.5 cm

size 152: 55.2 cm

Skirt lining panel



Radius for waist edge (R)

size 128: 46.5 cm,

size 134: 48.0 cm

size 140: 49.7 cm,

size 146: 52.5 cm

size 152: 55.0 cm

Radius for hem line (R1)

size 128: 79.4 cm,

size 134: 83.0 cm

size 140: 86.6 cm,

size 146: 91.4 cm

size 152: 95.0 cm

Cutting Out

Georgette:

a) skirt piece from diagram 2x, on a fold.

Cotton batiste (lining):

b) skirt piece 1x from diagram.

Rib knit fabric: Draft the following piece

c) 2 waistband pieces, 35 – 36 – 37 – 39 – 41 cm (13 3/4 – 14 1/4 – 14 1/2 – 15 1/2 – 16 1/4 ins) long, 5 cm (2 ins) wide, finished width 2.5 cm (1 in).

Pleating:

Have skirt pieces pleated commercially: sunburst pleats.

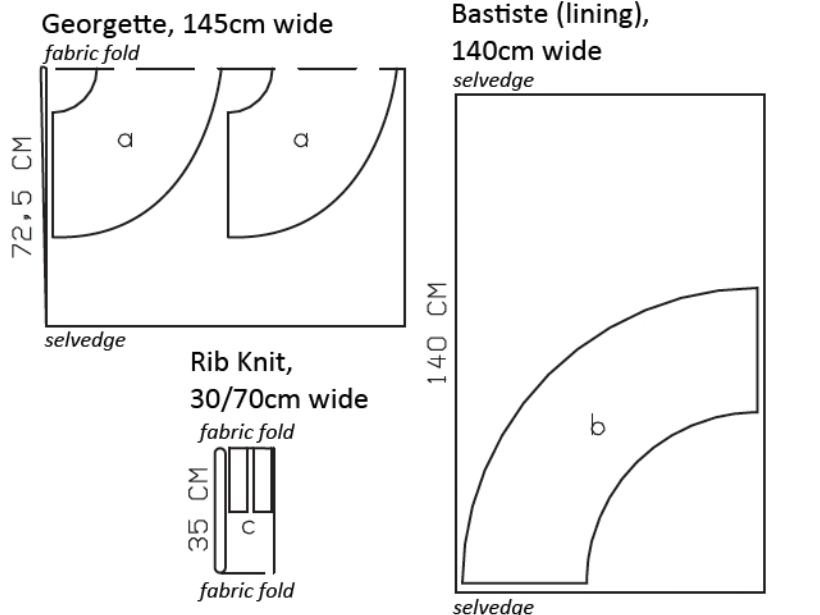
Sewing

Stitch side seams of skirt pieces inside a pleat fold. Trim seam allowances to 7 mm (1/4 in) wide and neaten edges together.

Stitch right side seam of skirt lining. Neaten seam allowances together and press to one side.

Place lining inside skirt, with right side facing wrong side. Baste upper edges together, slightly easing skirt edge.

Stitch side seams of waistband. On one waistband seam, leave inside half open, to insert elastic. Press seams open. Fold waistband lengthwise, wrong side facing in. Stitch long edges together to upper skirt edge, stretched to match. Pull elastic into waistband. Sew ends together to a circumference of 58 – 60 – 61 – 63 – 65 cm (23 – 23 3/4 – 24 – 24 3/4 – 25 3/4 ins). Sew seam opening closed.



Right side faces in on a double layer of fabric; right side faces up on a single layer of fabric.