

### 117 Skirt

Burda sizes 36, 38, 40, 42, 44, p. 13

Skirt length 54 cm (21 1/4 ins)

### Materials

Note: You can make the fringe yourself from strips of fabric and yarn. Alternatively, you may choose to use a ready-made fringe trim. You will need approx. 1.20 m (1 3/8 yds) of ready-made trim, 2 cm (3/4 in) wide.

Bouclé,  
width: 130 cm (51 ins)  
length: 0.75 m (7/8 yd) for all sizes.

Lining,  
width: 140 cm (55 ins)  
length: 0.60 m (3/4 yd).

Elastic, 3 cm (1 1/4 ins) wide and 0.70 – 0.75 – 0.80 – 0.80 – 0.85 m (7/8 – 7/8 – 7/8 – 1 yd) long.

Yarn for the fringe.

Rotary cutter, ruler and cutting mat.

Recommended fabrics: Skirt fabrics. Use only fabrics which can be frayed easily (fringe).

### Preparations

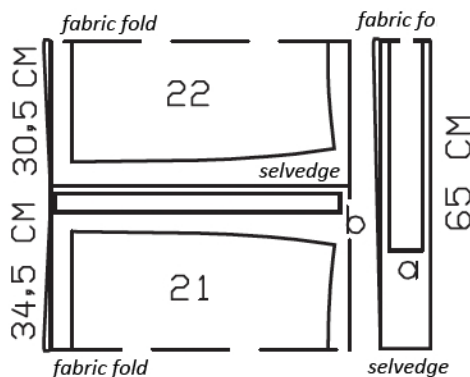
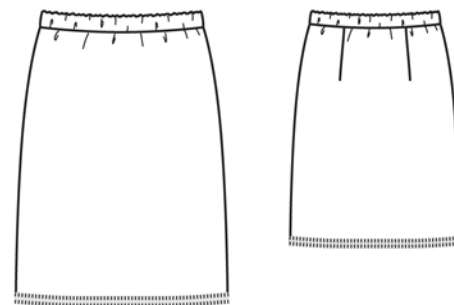
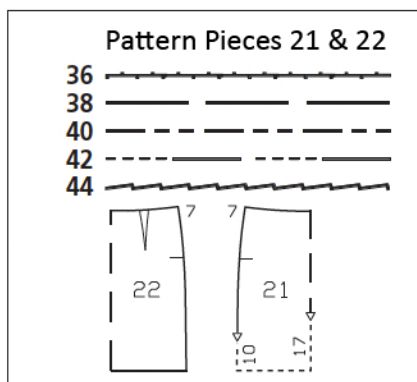
Print the pattern out on letter or A4 sized paper. It is **very** important to not scale the document. Your pattern will print on multiple pages, which you will then tile together. Arrange the sheets on a large, hard and flat surface matching up the numbers and letters (i.e. 6A to 6A). Cut or fold one of the sides and match the edge to its corresponding side. Then, tape down in place so paper is secure.

Trace the pattern pieces from the pattern sheet following the lines and markings for style 117 and your size.

**burda style magazine patterns do not have seam allowance included.**

Seam and hem allowance to be added:

Seams and edges 1.5 cm (5/8 in), side seams for size 44 only 1 cm (3/8 in), hem 4 cm (1 5/8 ins), lining 1.5 cm (5/8 in).



Cut from a double layer of fabric, right side facing in.

### Cutting Out

Bouclé:

21 front skirt panel, on a fold 1x  
22 back skirt panel, on a fold 1x

Draft the following pieces NOT included in the pattern:

a) waistband, 89 – 93 – 97 – 101 – 105 cm (35 – 36 3/4 – 38 1/4 – 39 3/4 – 41 1/2 ins) long, 7 cm (3 ins), finished width 3.5 cm (1 1/2 ins),

b) fringe strip for lower skirt edge, a total of 120 cm (47 1/4 ins) long, 4 cm (1 5/8 ins) wide, cut without allowance.

Lining: pieces 21 and 22.

## Sewing

Stitch back darts and press toward centre back. Stitch side seams. Press seam allowances open.

Pin waistband ends together, right sides facing. Stitch seam (side seam) on outer waistband half, leaving inside half open for elastic. Press seam open. Stitch waistband to upper skirt edge. Press seam allowances open.

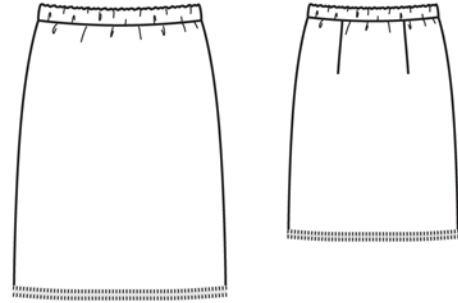
Stitch darts and seams of lining. Stitch lining to inside waistband edge, right sides facing. Press seam allowances onto lining.

Fold waistband half to inside. Pull lining into skirt, with wrong sides facing. Pin waistband attachment seams together exactly. Work from outer side of garment to stitch along line of waistband attachment seam. Pull elastic into waistband. Sew ends of elastic together to a circumference of 65 – 69 – 73 – 77 – 81 cm (25 3/4 – 27 1/4 – 28 3/4 – 30 1/2 – 32 ins).

Press hem allowance to inside and sew in place by hand. Hem lining so that it is approx. 2 cm (3/4 in) shorter than skirt.

**Fringe trim:** Cut pieces of yarn 4 cm (1 1/2 ins) long. To do this, wrap the yarn around a strip of cardboard, 2 cm (3/4 in) wide, and cut open on one side. Lay the pieces of yarn across the cut fabric strip, one by one, closely next to each other. Stitch along the centre of the strip, catching the pieces of yarn. Use the rotary cutter and the ruler to trim strip edges on each side of seam to 1.3 cm (a generous 1/2 in) wide. Pin trim, with yarn face down, to outer jacket edges, lower sleeve edges and upper pocket edges so that trim extends past these edges by approx. 5 mm (3/16 in). On pockets, turn ends of trim under, over the side edges. Stitch along centre of trim at a small zigzag setting. After the stitching, draw out fabric threads to fringe the fabric edges of the trim, up to the seam. To create the fuzzy effect, brush the fringe and yarn with a soft brush. Optional: Dampen now and then with a steam iron as you brush, for a stronger effect.

Stitch trim to lower skirt edge.



## Additional Information:

**Burda patterns do not include seam and hem allowances.** We recommend adding 1-2 cm (3/8 - 3/4 inch) for seams and 2-5 cm (3/4 - 2 inch/es) for hems. Refer to your specific pattern instructions for exact measurements.

The fabric requirements are based on the fabric used for the original designs. These amounts will change if you use fabric of a different width. The pattern of the fabric determines whether all the pieces must be cut in the same direction or whether some can be reversed to save fabric.

The cutting layout printed with the instructions shows the best way to place the pattern pieces on our original fabric. Fold the fabric double with the right side facing in. The fabric then has a fold edge and a selvedge edge. When cutting from a single fabric layer, the right side should face up.

Pattern pieces which are shown in the cutting layout with broken outlines should be pinned to the fabric with their printed side facing down.

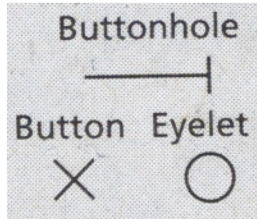
Grey shaded areas in the cutting layout indicate which pieces are to be interfaced.

Transfer the pattern piece lines to the wrong side of your fabric with burda dressmaker's carbon paper. Hand-baste along lines (e.g. for pockets or centre front) to make them visible on the right side of the fabric.

## Key Symbols:

### Seam numbers

show where pattern pieces must be sewn together. Match pieces with the same numbers.



### Seam marks

on long seams. Match the small symbols to one another.



**Presser foot** is the symbol for seam and top-stitching lines.



### Scissors

indicate edges to be cut without seam allowances and also slash lines, e. g. pocket openings.



### Pleat symbol

Fold pleat in direction of arrow.



### Placket/slit mark

Indicates beginning/ end of placket/slit.



**Gather**  
**Ease**  
**Stretch**

