

107 Jacket

Burda sizes 36, 38, 40, 42, 44

Back length approx. 62 cm (24 1/2 ins)

3/4-sleeves, approx. 48 cm (19 ins) long

Materials

Note: You can make the fringe yourself from strips of fabric and yarn. Alternatively, you may choose to use a ready-made fringe trim. You will need 3.50 – 3.60 – 3.70 – 3.80 – 3.90 m (3 7/8 – 4 – 4 1/8 – 4 1/4 – 4 1/4 yds) of ready-made trim, 2 cm (3/4 in) wide.

Bouclé,
width: 130 cm (51 ins)
length: 1.90 m (2 1/8 yds) for all sizes.

Lining,
width: 140 cm (55 ins)
length: 1.10 m (1 1/4 yds).

Interfacing.

3 large sew-on snap fasteners.

Lightweight shoulder pads.

A small piece of batting and yarn for the fringe.

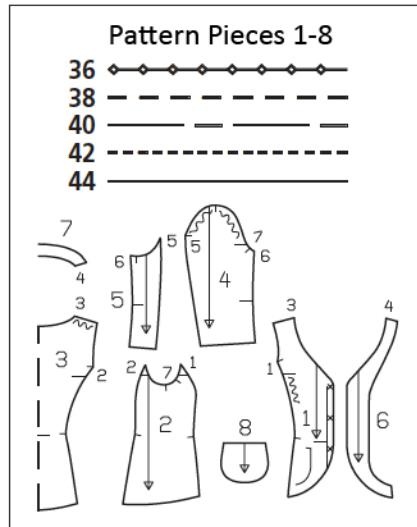
Rotary cutter, ruler, and cutting mat.

Recommended fabrics: Jacket fabrics. Use only fabrics which can be easily frayed (fringe).

Preparations

Print the pattern out on letter or A4 sized paper. It is **very important** to not scale the document. Your pattern will print on multiple pages, which you will then tile together. Arrange the sheets on a large, hard and flat surface matching up the numbers and letters (i.e. 6A to 6A). Cut or fold one of the sides and match the edge to its corresponding side. Then, tape down in place so paper is secure.

Trace the pattern pieces from the pattern sheet following the lines and markings for style 107 and your size. The snap fasteners marked on piece 1 are for size 36. For the other sizes, mark the top fastener the same distance from neck edge as for size 36. The bottom snap is the same for all sizes. Centre the third snap in between.

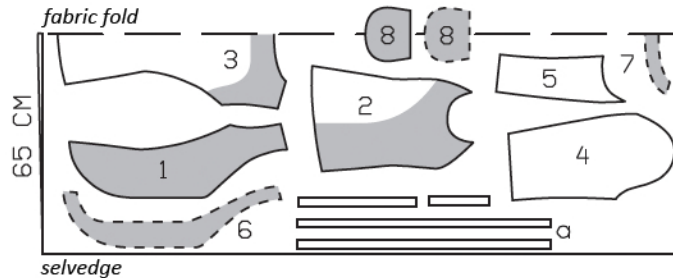


burda style magazine patterns do not have seam allowance included.

Seam and hem allowance to be added:

Seams and edges 1.5 cm (5/8 in), hem on back and side pieces 5 cm (2 ins), sleeve hems 4 cm (1 5/8 ins).

Lining: seams and edges 1.5 cm (5/8 in), sleeve hems 1.5 cm (5/8 in), no allowances on lower edges of back and side pieces.



Cut from a double layer of fabric, right side facing in. Make sure that pattern of fabric matches at stripe marks.

Cutting Out

Bouclé:

- 1 front 2x
- 2 side piece 2x
- 3 back, on a fold 1x
- 4 upper sleeve 2x
- 5 under sleeve 2x
- 6 front facing 2x
- 7 back facing, on a fold 1x
- 8 pocket 2x

Draft the following piece NOT included in the pattern:

a) fringe strip, 4 cm (1 5/8 ins) wide, cut without allowance: a total of 290 cm (114 ins) long for outer jacket edge, 2 pieces, each 35 cm (13 3/4 ins) long, for lower sleeve edges, and 2 pieces, each 18 cm (7 1/8 ins) long, for pockets.

Lining: piece 1 minus width of facing; piece 3 minus width of facing and with an ease pleat of approx. 2 cm (3/4 in) at centre back; pieces 2, 4, 5 and 8.

Interfacing: See shaded area on the pattern layout. Also interface the hem allowances (side pieces, back, sleeves).

Sewing

Stitch side pieces to front pieces, from upper edges to approx. 10 cm (4 ins) above marked hem line, easing fronts from • to •. Stitch side pieces to back piece. Press seam allowances open. Stitch shoulder seams on jacket and on facing.

Pin facing to jacket, right sides together. Stitch along front hem edges, front edges, and neck edge. Trim seam allowances. Turn facing to inside and press edges.

At front section seams, turn facings down again. Stitch remainder of section seams as far as inside facing edge. Turn facing and hem allowance to inside and press.

Stitch sleeve seams. Press sleeve hem allowances to inside and sew in place by hand.

Set in sleeves, easing sleeve caps. Lay strips of batting, approx. 3 cm (1 1/4 ins) wide, under sleeve caps and sew to seam allowances. Sew shoulder pads in place.

Sew lining: On lining back, stitch ease pleat at top and bottom, each approx. 5 cm (2 ins) long, and baste in between. Press pleat to one side. Stitch seams of lining. Set in sleeve linings.

Stitch lining to inside facing edge, right sides together, beginning and ending approx. 5 cm (2 ins) before facing ends. Lay lining inside jacket, pulling linings into sleeves. Sew hem allowance in place by hand. Turn in lining along hem edge and press fold edge lightly. Push upward and pin to hem allowance, in front tapering toward inside facing edge. Sew lining in place. Lay extra length of lining down and press lightly. Above each sleeve hem, pin a fold, approx. 1 cm (3/8 in) deep, in lining. Turn in sleeve lining and sew to hem allowance. Lay extra length of lining down and press.

Patch pockets: Lay pocket linings on pocket pieces of outer fabric, right sides facing. Stitch together around all edges, leaving a section of seam open, for turning. Turn pockets right side out. Sew openings closed.



Fringe trim: Cut pieces of yarn 4 cm (1 1/2 ins) long. To do this, wrap the yarn around a strip of cardboard, 2 cm (3/4 in) wide, and cut open on one side. Lay the pieces of yarn across the cut fabric strip, one by one, closely next to each other. Stitch along the centre of the strip, catching the pieces of yarn. Use the rotary cutter and the ruler to trim strip edges on each side of seam to 1.3 cm (a generous 1/2 in) wide. Pin trim, with yarn face down, to outer jacket edges, lower sleeve edges and upper pocket edges so that trim extends past these edges by approx. 5 mm (3/16 in). On pockets, turn ends of trim under, over the side edges. Stitch along centre of trim at a small zigzag setting. After the stitching, draw out fabric threads to fringe the fabric edges of the trim, up to the seam. To create the fuzzy effect, brush the fringe and yarn with a soft brush. Optional: Dampen now and then with a steam iron as you brush, for a stronger effect.

Pin pockets to jacket at placement lines and sew in place by hand.

Cover snap fastener halves with lining fabric. Sew top halves of snaps on inside of right front edge as marked. Lay jacket closed, matching centre fronts. Mark positions of lower snap halves on left front. Sew lower snap halves in place as marked.

Additional Information:

Burda patterns do not include seam and hem allowances. We recommend adding 1-2 cm (3/8 - 3/4 inch) for seams and 2-5 cm (3/4 - 2 inch/es) for hems. Refer to your specific pattern instructions for exact measurements.

The fabric requirements are based on the fabric used for the original designs. These amounts will change if you use fabric of a different width. The pattern of the fabric determines whether all the pieces must be cut in the same direction or whether some can be reversed to save fabric.

The cutting layout printed with the instructions shows the best way to place the pattern pieces on our original fabric. Fold the fabric double with the right side facing in. The fabric then has a fold edge and a selvedge edge. When cutting from a single fabric layer, the right side should face up.

Pattern pieces which are shown in the cutting layout with broken outlines should be pinned to the fabric with their printed side facing down.

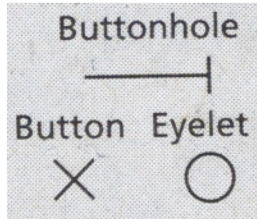
Grey shaded areas in the cutting layout indicate which pieces are to be interfaced.

Transfer the pattern piece lines to the wrong side of your fabric with burda dressmaker's carbon paper. Hand-baste along lines (e.g. for pockets or centre front) to make them visible on the right side of the fabric.

Key Symbols:

Seam numbers

show where pattern pieces must be sewn together. Match pieces with the same numbers.



Seam marks

on long seams. Match the small symbols to one another.



Presser foot is the symbol for seam and top-stitching lines.



Scissors

indicate edges to be cut without seam allowances and also slash lines, e.g. pocket openings.



Pleat symbol

Fold pleat in direction of arrow.



Placket/slit mark

Indicates beginning/end of placket/slit.



Gather
Ease
Stretch

