

### 122 Dress

Burda sizes 36, 38, 40, 42, 44

Length from elastic casing 62 cm

Elastic casing is approx. 8 cm below waist

### Materials

Crêpe de chine,

width: 140 cm (55 ins)

length: 2.70 – 2.70 – 3.20 – 3.20 – 3.20 m

(3 – 3 – 3 1/2 – 3 1/2 – 3 1/2 yds).

Vilene Bias Tape/stay tape.

Soft petersham ribbon, 1.5 cm (5/8 in) wide and

2.50 – 2.55 – 2.60 – 2.65 – 2.70 m (2 3/4 – 2 7/8 –

2 7/8 – 3 – 3 yds) long.

Elastic, 3 cm (1 1/4 ins) wide and 0.75 – 0.80 –

0.85 – 0.90 – 0.95 m (7/8 – 7/8 – 1 – 1 – 1 1/8 yds)

long.

Elastic, 7 mm (1/4 in) wide and 0.50 – 0.50 – 0.50 –

0.55 – 0.55 m (5/8 – 5/8 – 5/8 – 3/4 – 3/4 yd) long.

2 hooks and eyes.

Recommended fabrics: Lightweight, softly draping dress fabrics.

### Preparations

Print the pattern out on letter or A4 sized paper.

It is **very** important to not scale the document.

Your pattern will print on multiple pages, which you will then tile together. Arrange the sheets on a large, hard and flat surface matching up the numbers and letters (i.e. 6A to 6A). Cut or fold one of the sides and match the edge to its corresponding side. Then, tape down in place so paper is secure.

Trace the pattern pieces from the pattern sheet following the lines and markings for style 122 and your size. Trace the pocket piece from piece 21 as a separate pattern piece – it is the same for all sizes.

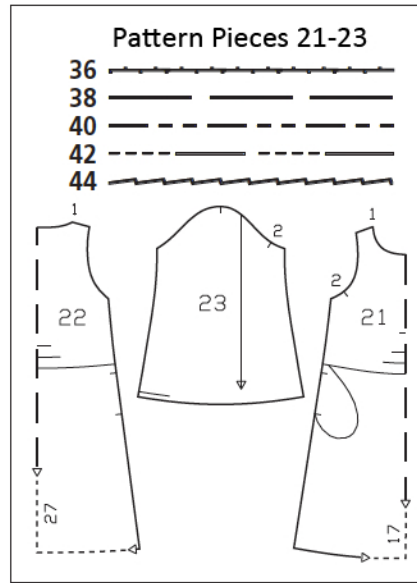
**burda style magazine patterns do not have seam allowance included.**

Seam and hem allowance to be added:

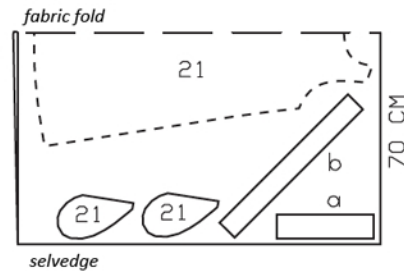
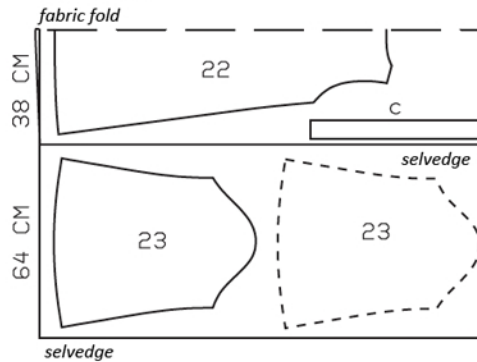
Seams and edges 1.5 cm (5/8 in), hem 4 cm (1

5/8 ins), sleeve hems 2 cm (3/4 in).

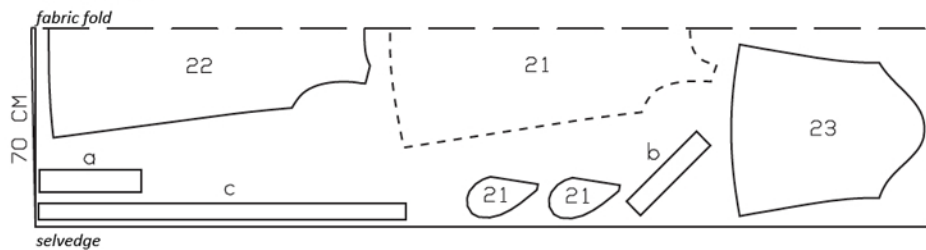
Copyright 2012 by Verlag GmbH & Co. KG Aenne Burda, Hubert Burda-Platz 2, D-77652 Offenburg. All models, pattern pieces and drawings are copyrighted, commercial use is prohibited. The publisher shall not be liable for damages caused by improper handling of the cut material, improper execution of the tips and instructions, or improper use of the models are emerging.



Sizes 36, 38



Sizes 40-44



Fold the fabric as shown in the pattern layout. Right side faces in on a double layer of fabric; right side faces up on a single layer of fabric. Cut right and left sleeves as opposites.

### Cutting Out

21 front, on a fold 1x

pocket piece 4x

22 back, on a fold 1x

23 sleeve 2x

Draft the following pieces NOT included in the pattern:

a) facing strip for front slit, 32 – 33 – 34 – 35 – 36 cm (12 3/4 – 13 – 13 1/2 – 13 3/4 – 14 1/4 ins) long, 8 cm (3 1/4 ins) wide (incl. allowances),

## Cutting Out Continued...

b) bias strip for neck edge, 60 – 61 – 62 – 63 – 65 cm (23 3/4 – 24 – 24 1/2 – 24 3/4 – 25 3/4 ins) long, 7 cm (2 3/4 ins) (incl. allowances),

c) facing strip for waist casing, 116 – 120 – 124 – 128 – 132 cm (45 3/4 – 47 1/4 – 49 – 50 1/2 – 52 ins) long, 6 cm (2 1/2 ins) wide (incl. allowances).

Vilene Bias Tape/stay tape: Iron to wrong side of front shoulder seam edges and armhole edges.

## Sewing

Stitch shoulder seams. Trim seam allowances to 7 mm (1/4 in), neaten together and press onto back.

Front slit and neck edge: Mark slit at centre front with basting stitches. Turn each long edge of facing strip to centre and press. Lay facing on front, over slit marking, and pin – turned-under facing edges lie on top. Fold bias strip for neck edge lengthwise, right side facing out, and press. Pin folded bias strip to neck edge so that fold edge of strip lies on garment piece, 2 cm (3/4 in) past seam line and ends of strip lie on the facing. At centre front, stitch closely around marked slit, catching turned-under edges of facing, then continue stitching along neck edge. Slash slit between lines of stitching and clip diagonally into bottom corners. Trim seam allowances on neck edge, trimming corners diagonally. Turn facing and bias strip to inside and press edges.

Pin petersham ribbon along neck and slit edges, beginning at left shoulder seam. Make a small fold in ribbon at each corner of neck edge and fold ribbon to a point at lower end of slit. Turn ribbon end under at shoulder seam. Edgestitch ribbon in place.

Stitch sleeves to front and back. Press seam allowances toward sleeves. Stitch petersham ribbon to front and back along sleeve attachment seams.

Stitch side seams and sleeve seams as continuous seams, not stitching across pocket openings. On each sleeve, leave seam open below hem line, for elastic.



Press sleeve hem allowances to inside, turn raw edges under, and stitch as marked to form elastic casings. Pull 7 mm (1/4 in) wide elastic into each casing. Sew ends of each elastic together to a circumference of 21 – 22 – 22 – 23 – 23 cm (8 3/8 – 8 3/4 – 8 3/4 – 9 1/8 – 9 1/8 ins).

Inseam pockets: Work from inside to pin pocket pieces to seam allowances of pocket opening edges, right sides facing. Stitch pockets in place, directly along marked seam lines. Above pocket opening edges, stitch pocket pieces in place, close to seams. Press pocket pieces forward and stitch together. Baste upper pocket edges in place.

Press all edges of facing strip for casing to wrong side, 1 cm (3/8 in) wide. Baste facing strip to inside of dress, over marked casing lines, beginning and ending at one side seam. Work from outer side of dress to stitch facing strip in place as marked. Pull 3 cm (1 1/4 in) wide elastic into casing. Sew ends of elastic together to a circumference of 70 – 74 – 78 – 82 – 86 cm (27 3/4 – 29 1/4 – 30 3/4 – 32 1/2 – 34 ins).

Press hem allowance to inside and sew in place by hand.

Sew hooks and eyes to wrong side of front slit edges, at top of slit and 15 – 15 – 16 – 17 – 18 cm (6 – 6 – 6 3/8 – 6 3/4 – 7 1/8 ins) lower.

## Additional Information:

**Burda patterns do not include seam and hem allowances.** We recommend adding 1-2 cm (3/8 - 3/4 inch) for seams and 2-5 cm (3/4 - 2 inch/es) for hems. Refer to your specific pattern instructions for exact measurements.

The fabric requirements are based on the fabric used for the original designs. These amounts will change if you use fabric of a different width. The pattern of the fabric determines whether all the pieces must be cut in the same direction or whether some can be reversed to save fabric.

The cutting layout printed with the instructions shows the best way to place the pattern pieces on our original fabric. Fold the fabric double with the right side facing in. The fabric then has a fold edge and a selvedge edge. When cutting from a single fabric layer, the right side should face up.

Pattern pieces which are shown in the cutting layout with broken outlines should be pinned to the fabric with their printed side facing down.

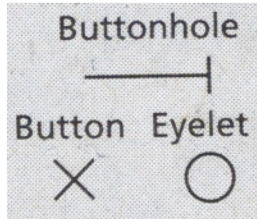
Grey shaded areas in the cutting layout indicate which pieces are to be interfaced.

Transfer the pattern piece lines to the wrong side of your fabric with burda dressmaker's carbon paper. Hand-baste along lines (e.g. for pockets or centre front) to make them visible on the right side of the fabric.

## Key Symbols:

### Seam numbers

show where pattern pieces must be sewn together. Match pieces with the same numbers.



### Seam marks

on long seams. Match the small symbols to one another.



**Presser foot** is the symbol for seam and top-stitching lines.



### Scissors

indicate edges to be cut without seam allowances and also slash lines, e.g. pocket openings.



### Pleat symbol

Fold pleat in direction of arrow.



### Placket/slit mark

Indicates beginning/end of placket/slit.



**Gather**  
**Ease**  
**Stretch**

