

124 Jacket

Burda sizes 72, 76, 80, 84, 88, on p. 8

Length from elastic casing 111 cm

(elastic casing = waist)

Hem circumference 53 cm (21 ins)

Materials

Crêpe de chine,

width: 140 cm (55 ins)

length: 3.15 – 3.15 – 3.20 – 3.20 – 3.20m (3 1/2 yds).

Interfacing.

Seam binding, 2 cm (3/4 in) wide, finished width 1

cm (3/8 in) and 1.90 – 2.00 – 2.00 – 2.00 – 2.10 m

(2 1/8 – 2 1/4 – 2 1/4 – 2 1/4 – 2 3/8 yds) long.

Elastic, 7 mm (1/4 in) wide and 0.40 – 0.40 – 0.45 –

0.45 – 0.45 m (16 – 16 – 18 – 18 – 18 ins) long.

Recommended fabrics: Lightweight, softly draping fabrics.

Preparations

Print the pattern out on letter or A4 sized paper.

It is **very** important to not scale the document.

Your pattern will print on multiple pages, which you will then tile together. Arrange the sheets on a large, hard and flat surface matching up the numbers and letters (i.e. 6A to 6A). Cut or fold one of the sides and match the edge to its corresponding side. Then, tape down in place so paper is secure.

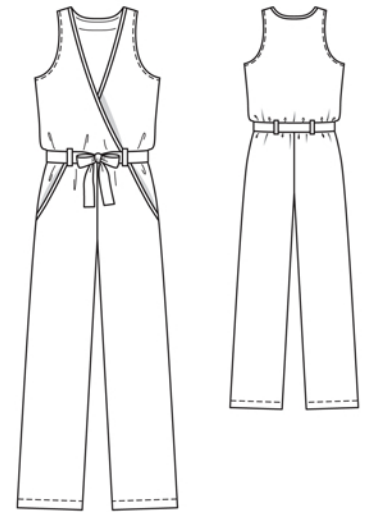
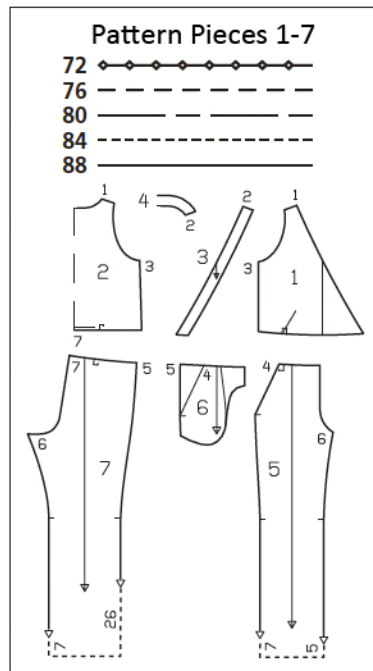
Trace the pattern pieces from the pattern sheet following the lines and markings for style 124 and your size. Trace the pocket piece from piece 6, up to the placement line. The loop markings on pieces 1, 2, 5, and 7 are for size 72. For the other sizes, remark the loops according to the size lines.

burda style magazine patterns do not have seam allowance included.

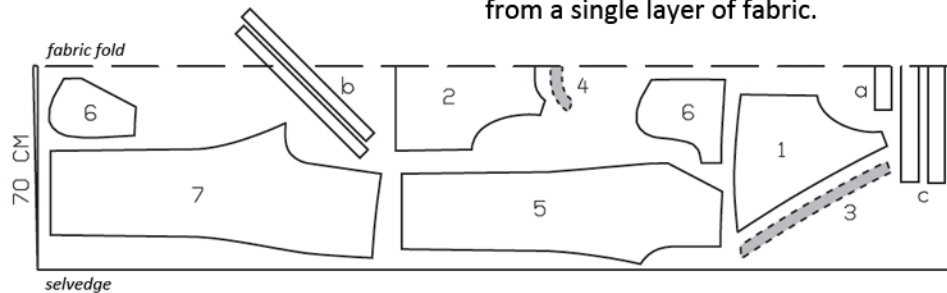
Seam and hem allowance to be added:

Seams and edges 1.5 cm (5/8 in), hem 4 cm (1

5/8 ins).



Cut from a double layer of fabric, right side facing in. Cut the bias strips last from a single layer of fabric.



Cutting Out

- 1 front 2x
- 2 back, on a fold 1x
- 3 front facing 2x
- 4 back facing, on a fold 1x
- 5 front trouser piece 2x
- 6 side hip yoke with integrated pocket piece 2x
- 6 pocket piece 2x
- 7 back trouser piece 2x

Draft the following pieces NOT included in the pattern:

- a) 4 belt carriers, a total of 30 cm (12 ins) long, 6 cm (2 3/8 ins) wide (incl. allowances),
- b) 2 bias strips for armholes, 54 – 56 – 57 – 59 – 61 cm (21 1/4 – 22 1/4 – 22 1/2 – 23 1/4 – 24 ins) long, 4 cm (1 5/8 ins) wide (incl. allowances),
- c) tie belt, a total of 144 – 148 – 152 – 156 – 160 cm (56 3/4 – 58 1/4 – 60 – 61 1/2 – 63 ins) long, 6 cm (2 3/8 ins) wide (incl. allowances).

Interfacing: See shaded area on pattern layout.

Sewing

Stitch shoulder seams on bodice and on facing. Press seams open.

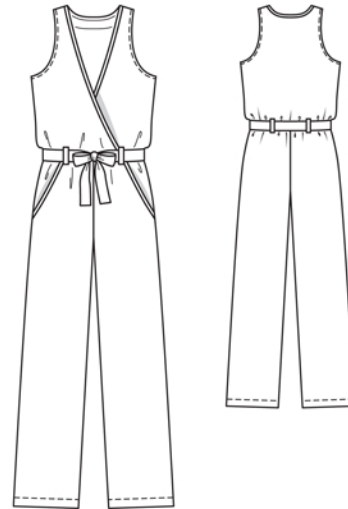
Lay facing under neck edge, wrong sides together, and baste next to seam allowance. Sew inside facing edge to shoulder seams. Trim away seam allowance on neck edge. Fold seam binding lengthwise and press so that lower edge extends by 2 mm (approx. 1/8 in). Lay seam binding over neck edge and pin. Work from right side of garment to edgestitch seam binding in place.

Armhole edges and side seams: Fold bias strips in half lengthwise, right side facing out, and press. Stitch folded bias strips to armhole edges so that fold edge of each strip lies on garment piece, 1 cm (3/8 in) past seam line. Trim allowances. Turn bias strips to inside and press edges. Stitch side seams, turning bias strips up and stitching ends together. Press seams open. Turn bias strips down again. Topstitch 7 mm (1/4 in) from armhole edges.

Lay right front on left front, matching centre fronts. Baste lower edges together.

Lay pocket pieces under pocket opening edges of front trouser pieces, with wrong sides facing. Baste in place next to allowances then trim away allowances. Lay pre-pressed binding over pocket opening edges and pin. Work from right side to edgestitch binding in place. Pin pocket opening edges to side hip yokes, at placement lines. Stitch pocket pieces together. Baste pockets to wrong side of trouser fronts.

On trousers, stitch side seams and inside leg seams. Pull one trouser leg over the other, with right sides facing. Stitch centre front and back seam as continuous seam. Press seam allowances open, from upper edges to beginning of crochet curve. Do not press allowances flat along curve.



Stitch bodice to upper edge of trousers. Press seam allowances up. Topstitch back as marked to form elastic casing. Fold strip for belt carriers lengthwise, right side facing in. Stitch 1.5 cm (5/8 in) from fold edge. Turn right side out. Topstitch close to edge. Cut strip into 4 pieces. Turn ends of each belt carrier under, for a finished length of 4 cm (15/8 ins). Pin belt carriers in place as marked and edgestitch ends in place. Pull elastic into back casing. Stitch across ends of elastic at side seams, for a finished width of 36 – 38 – 40 – 42 – 44 cm (14 1/4 – 15 – 15 3/4 – 16 1/2 – 17 1/4 ins).

Press hem allowances to inside, turn raw edges under to a hem width of 2 cm (3/4 in), and stitch.

Fold tie belt lengthwise, right side facing in. Stitch edges together, leaving a section of seam open, for turning. Turn belt right side out and sew opening closed.

Additional Information:

Burda patterns do not include seam and hem allowances. We recommend adding 1-2 cm (3/8 - 3/4 inch) for seams and 2-5 cm (3/4 - 2 inch/es) for hems. Refer to your specific pattern instructions for exact measurements.

The fabric requirements are based on the fabric used for the original designs. These amounts will change if you use fabric of a different width. The pattern of the fabric determines whether all the pieces must be cut in the same direction or whether some can be reversed to save fabric.

The cutting layout printed with the instructions shows the best way to place the pattern pieces on our original fabric. Fold the fabric double with the right side facing in. The fabric then has a fold edge and a selvedge edge. When cutting from a single fabric layer, the right side should face up.

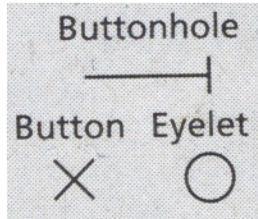
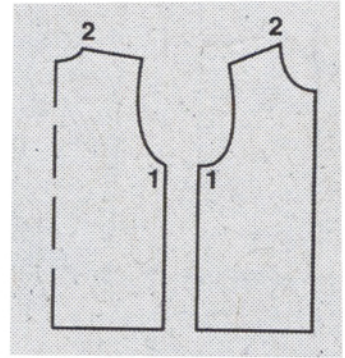
Pattern pieces which are shown in the cutting layout with broken outlines should be pinned to the fabric with their printed side facing down.

Grey shaded areas in the cutting layout indicate which pieces are to be interfaced.

Transfer the pattern piece lines to the wrong side of your fabric with burda dressmaker's carbon paper. Hand-baste along lines (e.g. for pockets or centre front) to make them visible on the right side of the fabric.

Key Symbols:

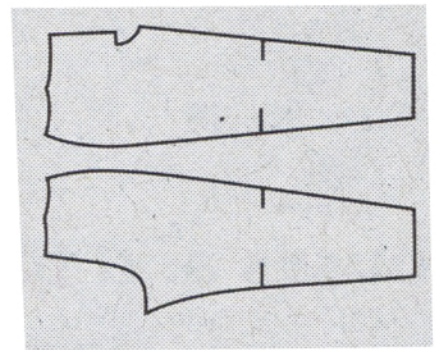
Seam numbers
show where pattern pieces must be sewn together. Match pieces with the same numbers.



Seam marks
on long seams. Match the small symbols to one another.



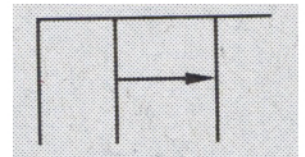
Presser foot
is the symbol for seam and top-stitching lines.



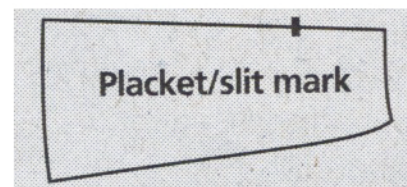
Scissors
indicate edges to be cut without seam allowances and also slash lines, e.g. pocket openings.



Pleat symbol
Fold pleat in direction of arrow.



Placket/slit mark
Indicates beginning/end of placket/slit.



Gather
Ease
Stretch

