

### 118 Dress

Burda sizes 36, 38, 40, 42, 44

Length from waist 54 cm (21 1/4 ins)

### Materials

Novelty bouclé, with woven-in widthwise rep weave bands (pattern repeat 3 cm / 1 1/4 ins)  
width: 150 cm (59 ins)  
length: 1.75 – 1.75 – 1.75 – 1.80 – 1.80 m (2 yds).

Interfacing.

Vilene Bias Tape/stay tape.

Bias tape, 4 cm (1 5/8 ins) wide and 0.45 m (1/2 yd) long.

Recommended fabrics: Dress fabrics. Use only fabrics which can be easily frayed (fringe).

### Preparations

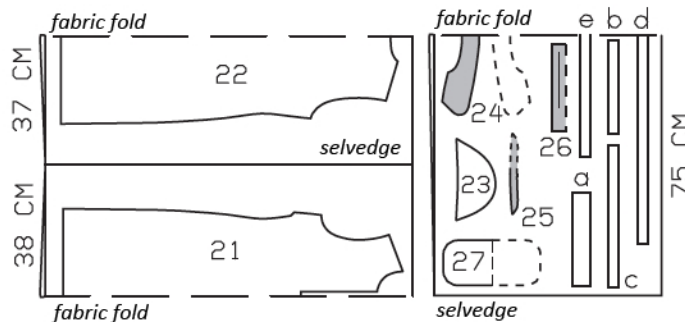
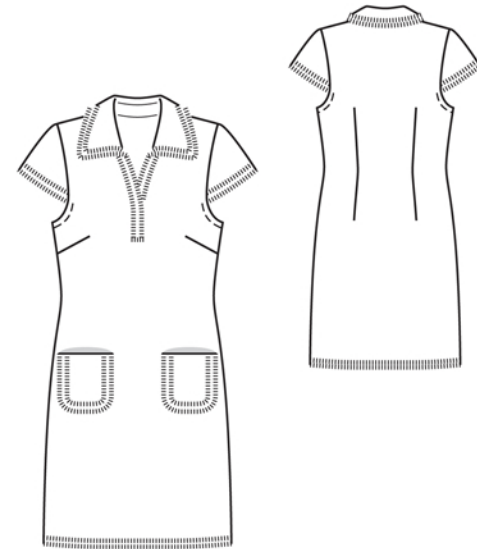
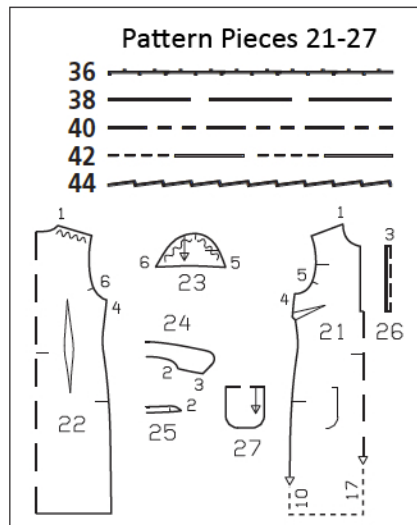
Print the pattern out on letter or A4 sized paper. It is **very** important to not scale the document. Your pattern will print on multiple pages, which you will then tile together. Arrange the sheets on a large, hard and flat surface matching up the numbers and letters (i.e. 6A to 6A). Cut or fold one of the sides and match the edge to its corresponding side. Then, tape down in place so paper is secure.

Trace the pattern pieces from the pattern sheet following the lines and markings for style 118 and your size.

**burda style magazine patterns do not have seam allowance included.**

Seam and hem allowance to be added:

Seams and edges 1.5 cm (5/8 in), band and band attachment edges 1 cm (3/8 in), hem 4 cm (1 5/8 ins), sleeve hems 1.5 cm (5/8 in).



Fold the fabric as shown in the pattern layout, right side facing in. Match stripes.

### Cutting Out

- |                         |                               |
|-------------------------|-------------------------------|
| 21 front, on a fold 1x  | 25 collar stand, on a fold 2x |
| 22 back, on a fold 1x   | 26 front band 2x              |
| 23 sleeve 2x            | 27 pocket, on a fold 2x       |
| 24 collar, on a fold 2x |                               |

Draft the following pieces NOT included in the pattern:

- 2 fringe strips for front bands, 27 cm (10 3/4 ins) long, 5 cm (2 ins) wide, cut without allowances,
- 2 fringe strips for lower sleeve edges, 30 cm (12 ins) long, 3 cm (1 1/4 ins) wide, cut without allowances,
- 2 fringe strips for pockets, 41 cm (16 1/4 ins) long, 3 cm (1 1/4 ins) wide, cut without allowances,
- 1 fringe strip for lower dress edge, 104 – 108 – 112 – 116 – 120 cm (41 – 42 1/2 – 44 1/4 – 45 3/4 – 47 1/4 ins) long, 3 cm (1 1/4 ins) wide, cut without allowances,
- 1 fringe strip for collar, 70 cm (27 3/4 ins) long, 3 cm (1 1/4 ins) wide, cut without allowances.

**Important:** Cut each fringe strip with a rep weave band along the centre. It is best to cut the strips for the fringe from a single fabric layer.

**Interfacing:** See shaded area on pattern layout. Iron interfacing to front over bottom band attachment corners. Iron Vilene Bias Tape/stay tape to wrong side of armhole and front shoulder seam edges.

## Sewing

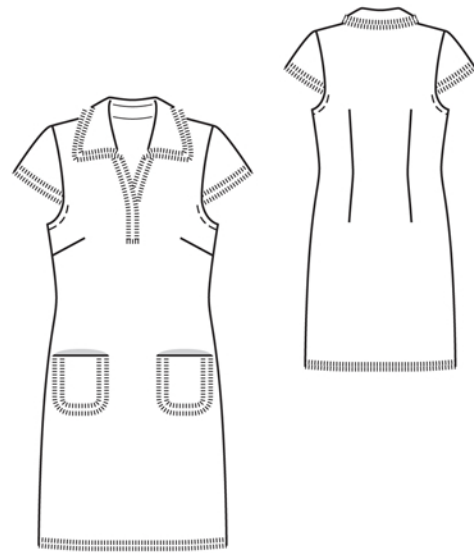
On each fringe strip for front band, stitch 1.5 cm (5/8 in) from long edges with small zigzag stitches. On all other fringe strips, stitch over edges of rep weave bands with a small zigzag stitches. Draw out fabric threads up to the stitching to create the fringe.

Stitch front bands to vertical edges of front. Clip seam allowances of front diagonally into bottom corners. Press allowances of band attachment seams and of other long band edges onto bands. Fold bands in half lengthwise and press, right side facing out. Baste inside edge of bands to attachment seam. Pin one fringe strip (a) to left front band so that the rep weave band is centred. Stitch strip to band attachment seam and to front band edge, with straight stitch. Lay right band on left band. Baste lower edges together and stitch to front. Pin second fringe strip to right band, leaving bottom end of strip extending 1 cm (3/8 in) past horizontal seam. Stitch fringe strip in place, not catching left band. Lay bands one on the other. Then stitch bottom end of strip in place, catching left band.

Stitch bust darts in front. Press darts down. Stitch darts in back and press toward centre back.

Fold each pockets on marked fold line, right side facing in. Stitch side and lower edges together, leaving a section of seam open, for turning. Turn pockets right side out and sew seam openings closed. Pin fringe strips to side and lower pocket edges so that rep weave band lies on pocket edges and fringe extends. Turn strip ends under at upper pocket edges. Stitch fringe strips to inside edge of rep weave band. Pin pockets to front at placement lines. Stitch in place along outer edge of rep weave band. Stitch upper pocket corners in place.

Stitch shoulder seams and side seams. Press seam allowances open. Press sleeve hem allowances to inside and baste. Stitch fringe trim to lower sleeve edges.



Stitch sleeves to armhole edges above seam marks. Fold bias strips lengthwise and press. Work from outer side of garment to pin each folded bias strip to armhole edge, below sleeve, so that fold edge of bias strip lies on garment piece, 1 cm (3/8 in) past seam line. Ends of bias strip lie over lower sleeve edge. Stitch bias strip in place. Trim seam allowances. Turn bias strip to inside. Topstitch 7 mm (1/4 in) from armhole edges.

Stitch collar stand pieces to collar pieces. Trim seam allowances and press open. Topstitch close to each side of seams. Stitch collar pieces together along outer edges, right sides facing, beginning and ending exactly at seam line on attachment edge. Turn collar right side out and press. Stitch top collar with collar stand to inside of neck edge. Press seam allowances toward collar and collar stand. Turn edge of under collar with collar stand to wrong side and sew to outer side, along attachment seam. Work from top collar side to stitch fringe strip along outer collar edges, turning in strip ends at collar attachment seam.

Press hem allowance to inside and sew in place by hand. Stitch fringe strip to hem edge.

## Additional Information:

**Burda patterns do not include seam and hem allowances.** We recommend adding 1-2 cm (3/8 - 3/4 inch) for seams and 2-5 cm (3/4 - 2 inch/es) for hems. Refer to your specific pattern instructions for exact measurements.

The fabric requirements are based on the fabric used for the original designs. These amounts will change if you use fabric of a different width. The pattern of the fabric determines whether all the pieces must be cut in the same direction or whether some can be reversed to save fabric.

The cutting layout printed with the instructions shows the best way to place the pattern pieces on our original fabric. Fold the fabric double with the right side facing in. The fabric then has a fold edge and a selvedge edge. When cutting from a single fabric layer, the right side should face up.

Pattern pieces which are shown in the cutting layout with broken outlines should be pinned to the fabric with their printed side facing down.

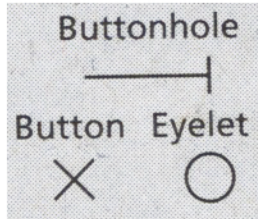
Grey shaded areas in the cutting layout indicate which pieces are to be interfaced.

Transfer the pattern piece lines to the wrong side of your fabric with burda dressmaker's carbon paper. Hand-baste along lines (e.g. for pockets or centre front) to make them visible on the right side of the fabric.

## Key Symbols:

### Seam numbers

show where pattern pieces must be sewn together. Match pieces with the same numbers.



### Seam marks

on long seams. Match the small symbols to one another.



**Presser foot** is the symbol for seam and top-stitching lines.



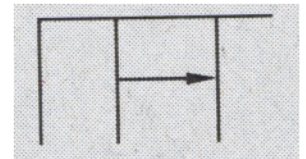
### Scissors

indicate edges to be cut without seam allowances and also slash lines, e.g. pocket openings.



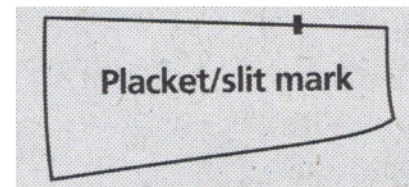
### Pleat symbol

Fold pleat in direction of arrow.



### Placket/slit mark

Indicates beginning/ end of placket/slit.



**Gather**  
**Ease**  
**Stretch**

