

116 Coat

Burda sizes 36, 38, 40, 42, 44

Back length approx. 92 cm (36 ins)

3/4-sleeves, approx. 43 cm (17 ins) long

Materials

Brocade,
width: 150 cm (59 ins)
length: 2.10 m (2 3/8 yds) for all sizes.

Lining,
width: 140 cm (55 ins)
length: 1.50 m (1 3/4 yds).

Interfacing.

6 large spherical buttons and 3 hooks and eyes.

Recommended fabrics: Lightweight coat fabrics with some body.

Preparations

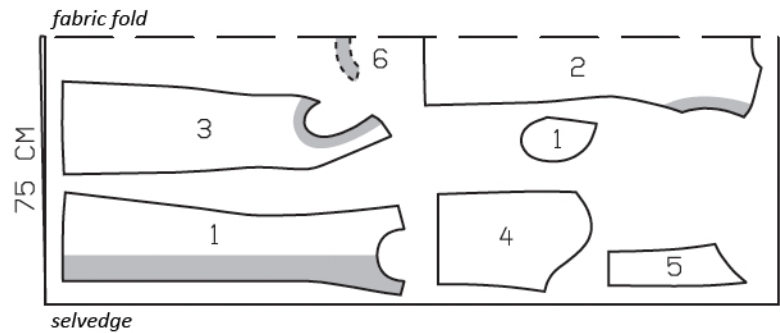
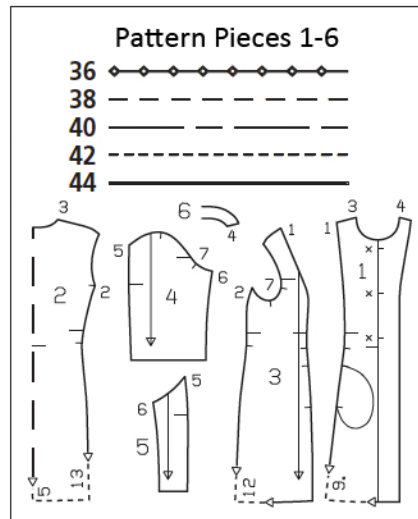
Print the pattern out on letter or A4 sized paper. It is **very important** to not scale the document. Your pattern will print on multiple pages, which you will then tile together. Arrange the sheets on a large, hard and flat surface matching up the numbers and letters (i.e. 6A to 6A). Cut or fold one of the sides and match the edge to its corresponding side. Then, tape down in place so paper is secure.

Trace the pattern pieces from the pattern sheet following the lines and markings for style 116 and your size. Trace the pocket piece from piece 1 as a separate pattern piece – it is the same for all sizes. The markings for the hooks and eyes and the button markings on piece 1 are for size 36. For sizes 38 – 44, make the top marking the same distance from neck edge as for size 36. The bottom marking is the same for all sizes. Centre the other marking in between. Remark button positions accordingly.

burda style magazine patterns do not have seam allowance included.

Seam and hem allowance to be added:

Seams and edges 1.5 cm (5/8 in), hem and sleeve hems 4 cm (1 5/8 ins), lining pieces 1.5 cm (5/8 in).



Cut from a double layer of fabric, right side facing in.

Cutting Out

- 1 front 2x
- pocket piece 2x
- 2 back, on a fold 1x
- 3 side piece 2x
- 4 sleeve front 2x
- 5 sleeve back 2x
- 6 back facing, on a fold 1x

Lining: piece 1 minus width of facing; piece 2 minus width of facing and with an ease pleat of approx. 2 cm (3/4 in) at centre back; pieces 3 to 5; and also pocket piece.

Interfacing: See shaded area on pattern layout. Also interface hem allowances.

Sewing

Stitch side pieces to fronts, not stitching across pocket openings. Press seam allowances open.

Inseam pockets: Pin pocket pieces to seam allowances at pocket opening edges right sides facing – pocket lining pieces to fronts and pocket pieces of main fabric to side pieces. Stitch pocket/lining pieces in place, directly along marked the seam lines. Press pocket pieces forward and stitch together.

Stitch side pieces to back. Stitch shoulder seams.

Turn front self-facings to outside and stitch to back facing. Stitch facing to neck edge, right sides together. Trim seam allowances, trimming corners diagonally. At neck edge, turn facing up and stitch to seam allowances, as far as possible, close to seam. Turn facing to inside. Press edges.

At hem edge, unfold facing. Press hem allowance to inside, then unfold flat down again.

Stitch sleeve seams. Press sleeve hem allowances to inside and sew in place by hand.

Set in sleeves.

Sew lining: On lining back, stitch ease pleat at top and bottom, each approx. 5 cm (2 ins) long, and baste in between. Press pleat to one side. Stitch seams of lining. Set in sleeve linings.

Line coat, hem: Stitch lining to inside facing edge, right sides together. Press seam allowances onto lining. Lay lining inside coat with wrong sides facing, pulling linings into sleeves. Turn hem allowance to inside and sew in place by hand. Turn facing to inside again. Turn lining edge under along hem edge and press fold edge lightly. Push upward in a shallow curve and pin to hem allowance. Sew facings and lining in place. Lay extra length of lining down and press lightly. Above each sleeve hem, pin a fold, approx. 1 cm (3/8 in) deep, in lining. Turn in sleeve lining and sew to hem allowance. Lay extra length down and press.



Sew hooks and eyes under front edges as marked – edges meet. Sew decorative buttons in place as marked.

Additional Information:

Burda patterns do not include seam and hem allowances. We recommend adding 1-2 cm (3/8 - 3/4 inch) for seams and 2-5 cm (3/4 - 2 inch/es) for hems. Refer to your specific pattern instructions for exact measurements.

The fabric requirements are based on the fabric used for the original designs. These amounts will change if you use fabric of a different width. The pattern of the fabric determines whether all the pieces must be cut in the same direction or whether some can be reversed to save fabric.

The cutting layout printed with the instructions shows the best way to place the pattern pieces on our original fabric. Fold the fabric double with the right side facing in. The fabric then has a fold edge and a selvedge edge. When cutting from a single fabric layer, the right side should face up.

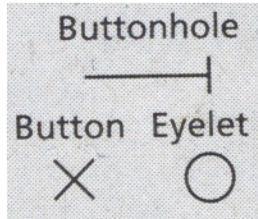
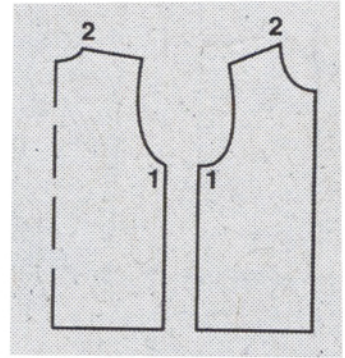
Pattern pieces which are shown in the cutting layout with broken outlines should be pinned to the fabric with their printed side facing down.

Grey shaded areas in the cutting layout indicate which pieces are to be interfaced.

Transfer the pattern piece lines to the wrong side of your fabric with burda dressmaker's carbon paper. Hand-baste along lines (e.g. for pockets or centre front) to make them visible on the right side of the fabric.

Key Symbols:

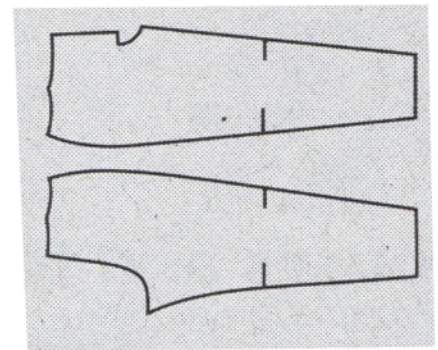
Seam numbers
show where pattern pieces must be sewn together. Match pieces with the same numbers.



Seam marks
on long seams. Match the small symbols to one another.



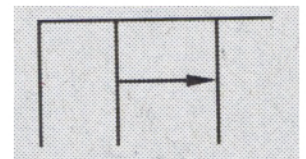
Presser foot
is the symbol for seam and top-stitching lines.



Scissors
indicate edges to be cut without seam allowances and also slash lines, e.g. pocket openings.



Pleat symbol
Fold pleat in direction of arrow.



Placket/slit mark
Indicates beginning/end of placket/slit.

