

141 Top

Burda sizes 44, 46, 48, 50, 52

Length from waist 31 cm (12 1/4 ins)

Materials

Stretch duchesse, with widthwise stretch,
width: 105 cm (42 ins)
length: 1.30 – 1.30 – 1.30 – 1.70 – 1.70 m
(1 1/2 – 1 1/2 – 1 1/2 – 1 7/8 – 1 7/8 yds).

Tulle lace fabric with two scalloped edges,
width: 90 cm (36 ins)
length: 1.00 – 1.00 – 1.00 – 1.10 – 1.10 m
(1 1/8 – 1 1/8 – 1 1/8 – 1 1/4 – 1 1/4 yds).

Stretch lining,
width: 140 cm (55 ins)
length: 0.60 – 0.60 – 1.10 – 1.10 – 1.10 m
(3/4 – 3/4 – 1 1/4 – 1 1/4 – 1 1/4 yds).

Tulle lace trim with a scalloped edge, 3 cm (1 1/4 ins) wide and 1.00 – 1.00 – 1.10 – 1.10 – 1.10 m (1 1/8 – 1 1/8 – 1 1/4 – 1 1/4 – 1 1/4 yds) long.

Boning tape, 8 mm (a generous 1/4 in) wide and 0.80 m (7/8 yd) long.

Interfacing.

1 invisible zip, 60 cm (24 ins) long.

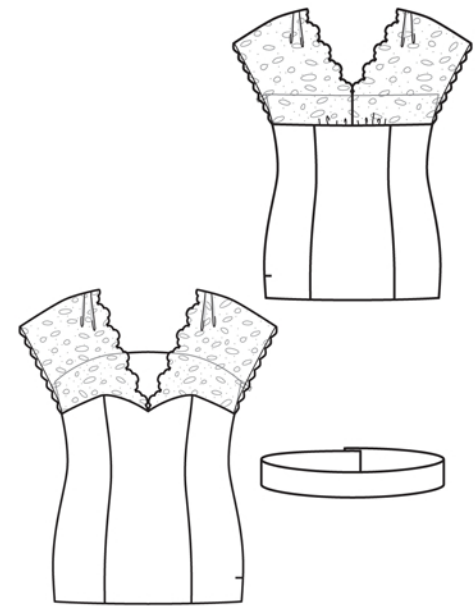
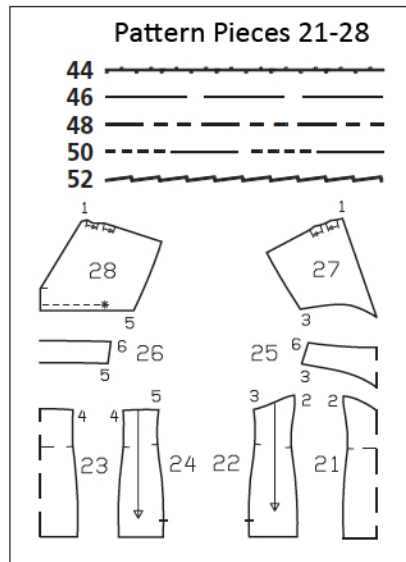
3 small hooks.

Recommended fabrics: Duchesse, crêpe satin. Use only fabrics with widthwise or two-way stretch. Combine with tulle lace for the sleeve pieces.

Preparations

Print the pattern out on letter or A4 sized paper. It is **very important** to not scale the document. Your pattern will print on multiple pages, which you will then tile together. Arrange the sheets on a large, hard and flat surface matching up the numbers and letters (i.e. 6A to 6A). Cut or fold one of the sides and match the edge to its corresponding side. Then, tape down in place so paper is secure.

Trace the pattern pieces from the pattern sheet following the lines and markings for style 141 and your size.



The pleat arrows on pieces 27 and 28 are for size 44. For the other sizes, mark the pleat arrows accordingly.

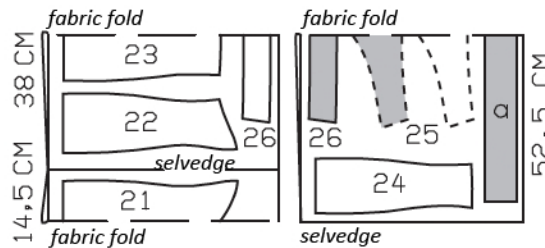
burda style magazine patterns do not have seam allowance included.

Seam and hem allowance to be added:

Seams and edges 1.5 cm (5/8 in), hem 4 cm (1 5/8 ins), lining 1.5 cm (5/8 in).

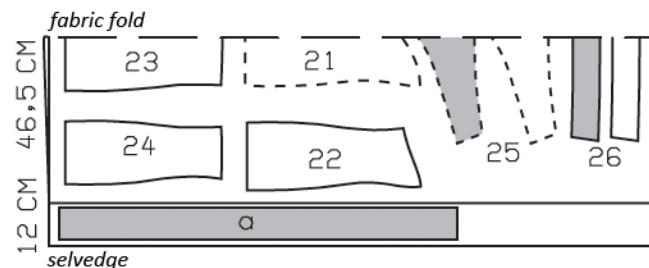
Duchesse, 105cm wide

Sizes 44-48

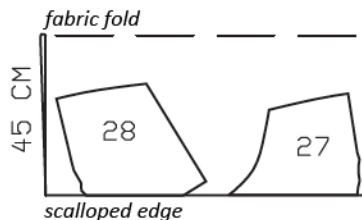


Fold the fabric as shown in the pattern layout, right side facing in. For the belt for sizes 50 and 52, leave one fabric edge (selvedge) extending by 12 cm (4 3/4 ins). On the lace fabric, pin the scallops together exactly.

Sizes 50, 52



Tulle Lace, 90cm wide



Cutting Out

Duchesse:

- 21 centre front, on a fold 1x
- 22 side front 2x
- 23 centre back, on a fold 1x
- 24 side back 2x
- 25 front band, on a fold 1x
and as facing, on a fold 1x
- 26 back band, on a fold 1x
and as facing, on a fold 1x

Draft the following piece NOT included in the pattern:

- a) belt with 2.5 cm (1 in) underlap, 90 – 94 – 100 – 106 – 112 cm (35 1/2 – 37 – 39 1/2 – 41 3/4 – 44 1/4 ins) long, 9 cm (3 1/2 ins) wide, finished width 4.5 cm (1 3/4 ins).

Lace fabric:

- 27 front sleeve piece 2x
- 28 back sleeve piece 2x

Lining: pieces 21 to 24.

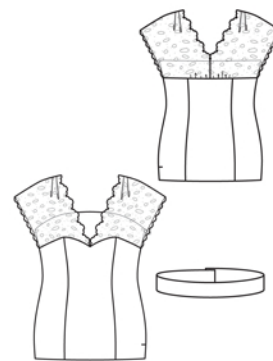
Interfacing: See shaded area on pattern layout.
Iron interfacing to wrong side of band pieces.

Sewing

Stitch front and back section seams and right side seam. Press seam allowances open.

On sleeve pieces, fold pleats in shoulder seam edges in direction of arrows and baste. Stitch centre back seam and shoulder seams on sleeve pieces. Trim seam allowances to 7 mm (1/4 in) wide, neaten edges together, and press to one side.

On each sleeve, hand baste along placement line for lace trim, 2 cm (3/4 in) from marked side edge, to make this line visible on right side of fabric. Lay lace trim on side edges, right sides facing, so that scalloped edge of trim meets basted placement line. Stitch 1 cm (3/8 in) from marked side edges. Trim seam allowances and neaten edges together. Turn lace trim to outside and press seam allowances onto sleeves.



Gather sleeve backs along lower edges, between asterisks. With right sides facing, baste sleeve fronts to upper front edge and baste sleeve backs to upper back edge. Front sleeves meet at centre front. Side sleeve edges meet at right side seam and seam allowances of front and back extend on left side.

On interfaced band, stitch right side seam. Stitch band to upper edge of front and back, right sides facing, clipping seam allowance of front at centre front and catching sleeves. Press seams open and press seam allowances of sleeves down.

Sew invisible zip to left side edges, see the “Helpful Hint” on the next page. Stitch left side seam from lower edge to zip.

On lining pieces, stitch front and back section seams. Press seam allowances open. Stitch front facing to front lining and stitch back facing to back lining. Press seam allowances onto lining. Topstitch lining close to seams. Stitch right side seam as mirror image of seam on outer fabric. Press seam allowances open. In front, stitch 1 cm (3/8 in) from seam, down to approx. 20 cm (8 ins) below waist, to form casing for boning. Stitch left side seam, leaving slit open 2 cm (3/4 in) longer than marked. Press slit edges on facing and lining to inside, 5 mm (3/16 in) wider than marked, tapering toward slit end. Stitch front allowances in place, down to approx. 20 cm (8 ins) below waist, to form casing for boning.

Lay facing with lining on garment, right sides together. Pin facing to upper edge – pressed-under facing edges end 5 mm (3/16 in) before zip slit. On slit edges of outer fabric, turn allowances to inside and pin to upper edge, over facing. Stitch along upper edge. Turn allowances on slit edges to inside. Turn facing and lining up and stitch to seam allowances, as far as possible, close to seam. Turn facing and lining to inside and press upper edge.

Cut boning tape into two equal pieces. Insert boning into casings. Stitch casings closed below boning. Sew facings and lining to zip tapes. Press hem allowance to inside and sew in place by hand. Turn hem allowance of lining to inside, turn edge under, and stitch so that lining is 2 cm (3/4 in) shorter than outer garment.

Fold belt lengthwise, right side facing in. Stitch edges together, leaving a section of seam open, for turning. Turn belt right side out. Sew seam opening closed. Fasten belt with hooks and thread loops.



These special zippers come in various lengths. The zipper should be at least 2 cm (3/4 in) longer than the slit. It is sewn in place before the seam below the slit is stitched. A special presser foot is required to sew the zipper in place.

Sewing the zipper in place:

Open the zipper and push the coil back with your thumbnail to reveal the seam marking between the tape and the coil. Place the open zipper right side down on the right fabric side of one slit edge.

In order to stitch the zipper in place exactly along the marked seam line, you must first calculate the distance between the tape edge and the fabric edge as follows: width of seam allowance minus 1 cm (3/8 in) tape width = distance from edge of fabric. This will yield a value of 5 mm (3/16 in) if the width of the seam allowance is 1.5 cm (5/8 in).

Pin the top end of the zipper tape in place, the calculated distance from the edge of the fabric. The bottom end of the zipper will extend past the marked end of the slit. Place the presser foot on the zipper so that the coil is in the notch to the right of the needle (1). Stitch zipper in place, from the top to the marked end of the slit. Close zipper.

Place the other zipper tape face down on the opposite slit edge and pin in place at the top. Open zipper again. Place the presser foot on the top end of the zipper so that the coil is in the notch to the left of the needle (2). Sew the zipper in place, from the top to the end of the slit. Close zipper.

Now stitch the seam below the zipper, from bottom to top. Turn the loose lower end of the zipper out of the way, over the seam allowance. Stitch as close as possible to the last stitches of the zipper seams. Trim away excess zipper and bind the end with a scrap of fabric.

Additional Information:

Burda patterns do not include seam and hem allowances. We recommend adding 1-2 cm (3/8 - 3/4 inch) for seams and 2-5 cm (3/4 - 2 inch/es) for hems. Refer to your specific pattern instructions for exact measurements.

The fabric requirements are based on the fabric used for the original designs. These amounts will change if you use fabric of a different width. The pattern of the fabric determines whether all the pieces must be cut in the same direction or whether some can be reversed to save fabric.

The cutting layout printed with the instructions shows the best way to place the pattern pieces on our original fabric. Fold the fabric double with the right side facing in. The fabric then has a fold edge and a selvedge edge. When cutting from a single fabric layer, the right side should face up.

Pattern pieces which are shown in the cutting layout with broken outlines should be pinned to the fabric with their printed side facing down.

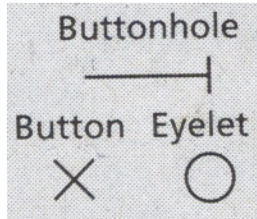
Grey shaded areas in the cutting layout indicate which pieces are to be interfaced.

Transfer the pattern piece lines to the wrong side of your fabric with burda dressmaker's carbon paper. Hand-baste along lines (e.g. for pockets or centre front) to make them visible on the right side of the fabric.

Key Symbols:

Seam numbers

show where pattern pieces must be sewn together. Match pieces with the same numbers.



Seam marks

on long seams. Match the small symbols to one another.



Presser foot is the symbol for seam and top-stitching lines.



Scissors

indicate edges to be cut without seam allowances and also slash lines, e.g. pocket openings.



Pleat symbol

Fold pleat in direction of arrow.



Placket/slit mark

Indicates beginning/ end of placket/slit.



Gather
Ease
Stretch

