

144 Dress

Burda sizes 44, 46, 48, 50, 52

Length from waist 70 cm (27 3/4 ins)

Materials

Novelty fabric with metallic effect,
width: 135 cm (53 ins)

length: 1.90 – 2.00 – 2.00 – 2.50 – 2.50 m
(2 1/8 – 2 1/4 – 2 1/4 – 2 3/4 – 2 3/4 yds).

Interfacing.

Vilene Bias Tape/stay tape.

1 invisible zip, 40 cm (16 ins) long.

Recommended fabrics: Lightweight dress fabrics with some body.

Preparations

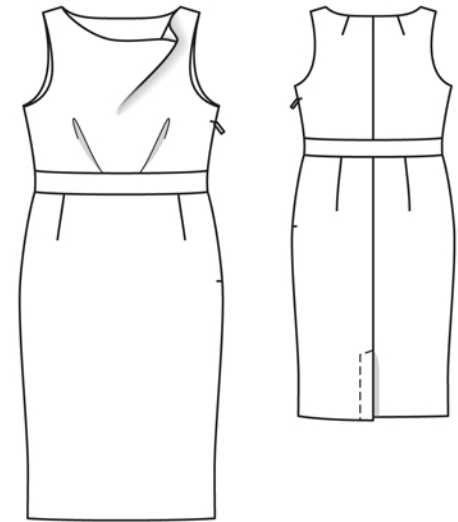
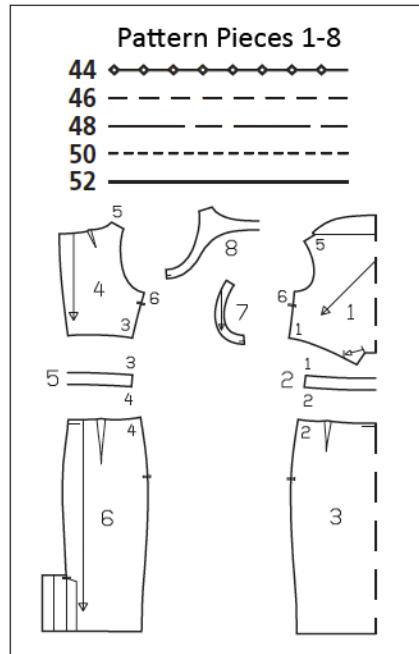
Print the pattern out on letter or A4 sized paper. It is **very** important to not scale the document. Your pattern will print on multiple pages, which you will then tile together. Arrange the sheets on a large, hard and flat surface matching up the numbers and letters (i.e. 6A to 6A). Cut or fold one of the sides and match the edge to its corresponding side. Then, tape down in place so paper is secure.

Trace the pattern pieces from the pattern sheet following the lines and markings for style 144 and your size. Note different lines for right and left edges of back vent but cut the skirt panels the same size initially from the double layer of fabric. The pleat arrow on piece 1 is marked for size 44. For the other sizes, mark the pleat arrow according to the size line.

burda style magazine patterns do not have seam allowance included.

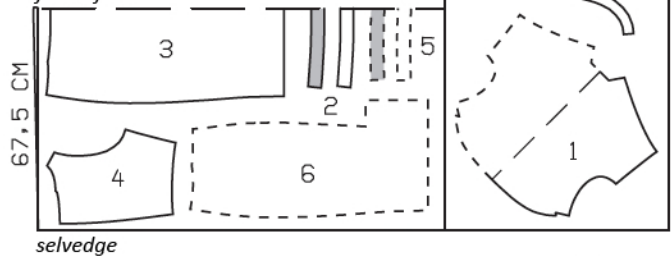
Seam and hem allowance to be added:

Seams and edges 1.5 cm (5/8 in), hem 4 cm (1 5/8 ins).



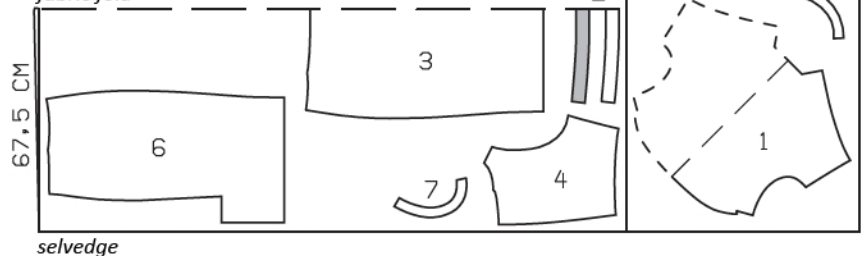
Sizes 44-48

fabric fold



Sizes 50, 52

fabric fold



Fold the fabric as shown in the pattern layout. Right side faces in on a double layer of fabric; right side faces up on a single layer of fabric. Cut right and left pieces as opposites.

Cutting Out

- 1 front, on a fold 1x
- 2 front waist band, on a fold 2x
- 3 front skirt panel, on a fold 1x
- 4 back 2x
- 5 back waist band, on a fold 2x
- 6 back skirt panel 2x
- 7 front armhole facing 2x
- 8 back facing, on a fold 1x

Interfacing: See shaded area on pattern layout. Interface outer band pieces. Iron Vilene Bias Tape/stay tape to wrong side of armhole edges and back neck edge.

Sewing

On dress bodice, stitch centre back seam and back darts. Press centre seam allowances open and press darts toward centre. Fold pleats in lower front edge in direction of arrows and baste.

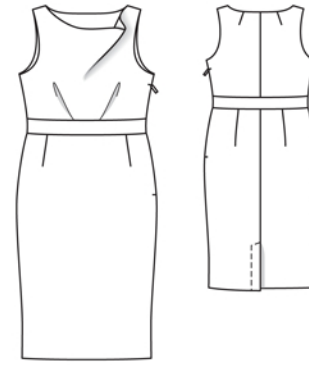
Stitch darts in skirt panels and press toward centre. Stitch centre back seam, leaving vent open. At vent, press allowances onto left skirt panel. Press centre seam allowances open. Above vent, press allowance of right skirt panel to wrong side, tapering as you go (do not clip into it).

Stitch interfaced front waist band to lower edge of bodice front and upper edge of skirt front. Stitch interfaced back waist band to lower edge of bodice back and upper edge of skirt back. Press seam allowances onto bands.

Lay back facing on back, right sides together. Stitch to neck and armhole edges. Trim seam allowances and clip curves several times. Do not yet turn facing to inside.

Stitch front armhole facings to armhole edges of front, right sides together. Trim seam allowances and clip curves. Turn facings over seam allowances into armholes and stitch to seam allowances, close to seam. Turn facings to inside.

On upper front edge, turn self-facing to inside on fold line and baste to shoulder edges. Do not press fold edge. Slide front shoulder edges between the as-yet-unturned back shoulder edges



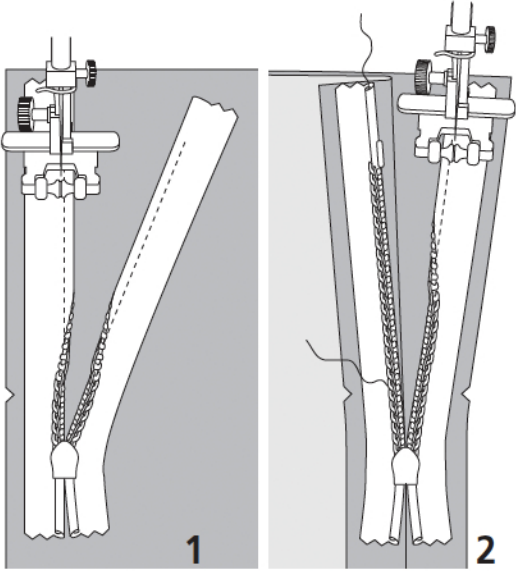
and stitch shoulder seams. Pull front down out of back shoulder edges – this will turn the back facing to the inside. Press faced edges.

Stitch right side seam, turning facing at armhole up to do so. Press seam allowances open. Turn facing to inside again and sew inside edge in place by hand.

At left armhole edge, turn facing up again. Sew invisible zip to left side edges, between slit marks, see the “Helpful Hint” on next page. Leave top ends of zip tapes loose. Teeth of zip begin at slit mark. Stitch left side seam from seam mark on armhole facing to zip and from hem line to zip. Turn facing to inside again and sew to zip tape. Sew inside facing edge in place.

On inside waist band pieces (without interfacing), stitch right side seam as mirror image of dress seam. Press seam allowances on long edges of band to inside, 2 mm (a scant 1/8 in) from marked seam lines. Pin inside band to outer band, with wrong sides facing. Turn narrow edges under and sew to zip tapes. Work from outer side of dress to stitch along band attachment seams, thereby catching inside edges.

At back vent, trim left facing to a width of 5 cm (2 ins). Turn left facing back again. Press hem allowance to inside and sew in place by hand. Press vent facings to inside and sew to hem. Topstitch left back vertically as marked. Lay vent closed. Topstitch top end of vent at an angle, as marked, catching underlap.



These special zippers come in various lengths. The zipper should be at least 2 cm (3/4 in) longer than the slit. It is sewn in place before the seam below the slit is stitched. A special presser foot is required to sew the zipper in place.

Sewing the zipper in place:

Open the zipper and push the coil back with your thumbnail to reveal the seam marking between the tape and the coil. Place the open zipper right side down on the right fabric side of one slit edge.

In order to stitch the zipper in place exactly along the marked seam line, you must first calculate the distance between the tape edge and the fabric edge as follows: width of seam allowance minus 1 cm (3/8 in) tape width = distance from edge of fabric. This will yield a value of 5 mm (3/16 in) if the width of the seam allowance is 1.5 cm (5/8 in).

Pin the top end of the zipper tape in place, the calculated distance from the edge of the fabric. The bottom end of the zipper will extend past the marked end of the slit. Place the presser foot on the zipper so that the coil is in the notch to the right of the needle (1). Stitch zipper in place, from the top to the marked end of the slit. Close zipper.

Place the other zipper tape face down on the opposite slit edge and pin in place at the top. Open zipper again. Place the presser foot on the top end of the zipper so that the coil is in the notch to the left of the needle (2). Sew the zipper in place, from the top to the end of the slit. Close zipper.

Now stitch the seam below the zipper, from bottom to top. Turn the loose lower end of the zipper out of the way, over the seam allowance. Stitch as close as possible to the last stitches of the zipper seams. Trim away excess zipper and bind the end with a scrap of fabric.

Additional Information:

Burda patterns do not include seam and hem allowances. We recommend adding 1-2 cm (3/8 - 3/4 inch) for seams and 2-5 cm (3/4 - 2 inch/es) for hems. Refer to your specific pattern instructions for exact measurements.

The fabric requirements are based on the fabric used for the original designs. These amounts will change if you use fabric of a different width. The pattern of the fabric determines whether all the pieces must be cut in the same direction or whether some can be reversed to save fabric.

The cutting layout printed with the instructions shows the best way to place the pattern pieces on our original fabric. Fold the fabric double with the right side facing in. The fabric then has a fold edge and a selvedge edge. When cutting from a single fabric layer, the right side should face up.

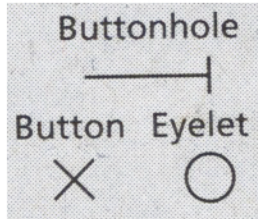
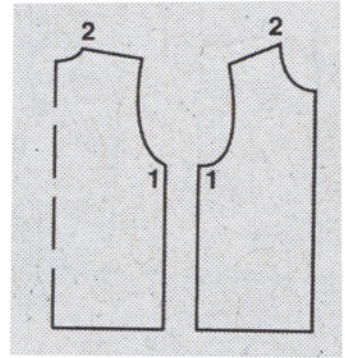
Pattern pieces which are shown in the cutting layout with broken outlines should be pinned to the fabric with their printed side facing down.

Grey shaded areas in the cutting layout indicate which pieces are to be interfaced.

Transfer the pattern piece lines to the wrong side of your fabric with burda dressmaker's carbon paper. Hand-baste along lines (e.g. for pockets or centre front) to make them visible on the right side of the fabric.

Key Symbols:

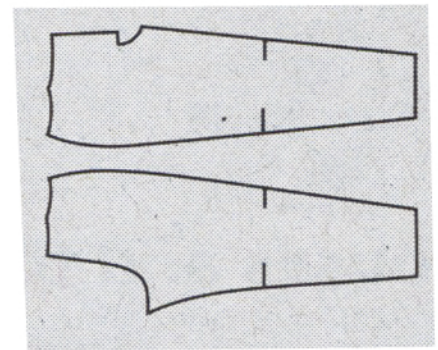
Seam numbers
show where pattern pieces must be sewn together. Match pieces with the same numbers.



Seam marks
on long seams. Match the small symbols to one another.



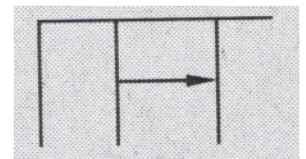
Presser foot
is the symbol for seam and top-stitching lines.



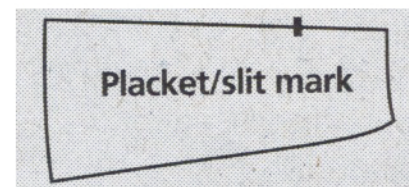
Scissors
indicate edges to be cut without seam allowances and also slash lines, e.g. pocket openings.



Pleat symbol
Fold pleat in direction of arrow.



Placket/slit mark
Indicates beginning/end of placket/slit.



Gather
Ease
Stretch

