

140 Dress

Burda sizes 44, 46, 48, 50, 52

Length of dress from waist 65 cm

Materials

Stretch satin with widthwise stretch, width: 135 cm (53 ins)

length: 2.60 – 2.65 – 2.70 – 2.75 – 2.80 m
(2 7/8 – 3 – 3 – 3 1/8 – 3 1/8 yds).

Interfacing.

Vilene/ Pellon Bias Tape.

1 invisible zip, 60 cm (24 ins) long.

Magic chalk.

Recommended fabrics: Softly draping dress fabrics. Fabrics with elastane are ideal.

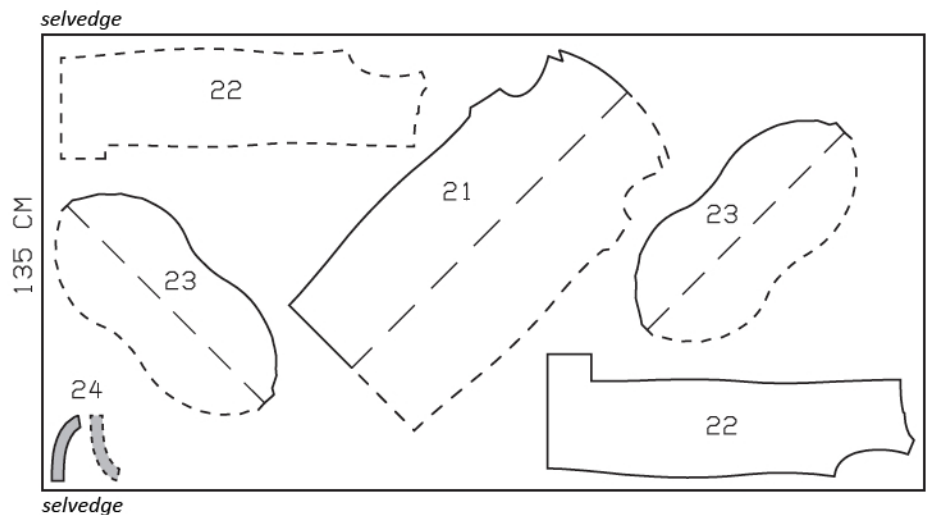
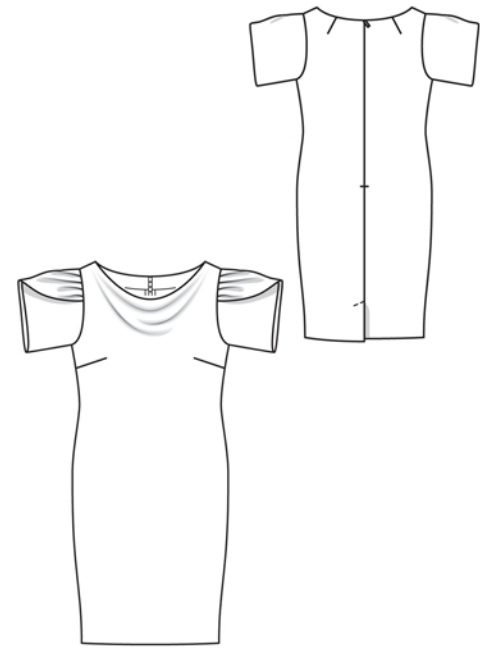
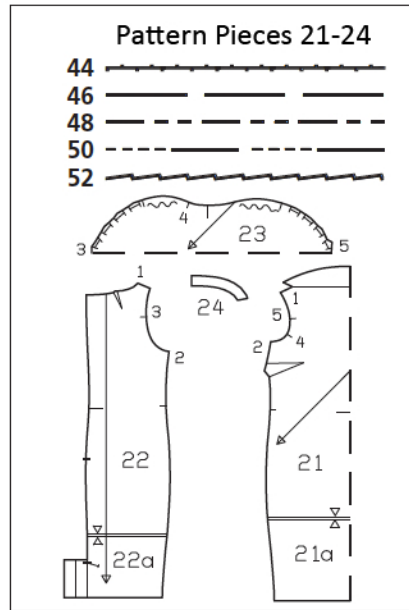
Preparations

Print the pattern out on letter or A4 sized paper. It is **very** important to not scale the document. Your pattern will print on multiple pages, which you will then tile together. Arrange the sheets on a large, hard and flat surface matching up the numbers and letters (i.e. 6A to 6A). Cut or fold one of the sides and match the edge to it's corresponding side. Then, tape down in place so paper is secure.

Trace the pattern pieces from the pattern sheet following the lines and markings for style 140 and your size. Note different lines for right and left vent edges (piece 22). The pleat arrows on the back edge of piece 23 are marked for size 44. For the other sizes, remark the pleat arrows accordingly.

burda style magazine patterns do not have seam allowance included.

Seam and hem allowance to be added:
Seams and edges 1.5 cm (5/8 in), hem 4 cm (1 5/8 ins).



Cut from a single layer of fabric, right side facing up. Cut right and left pieces as opposites.

Cutting Out

- 21 front, on a fold 1x
- 22 back 2x
- 23 sleeve, on a fold 2x
- 24 back neck facing 2x

Interfacing: See shaded area on pattern layout. Iron Vilene/Pellon Bias Tape/stay tape to wrong side of armhole edges.

Sewing

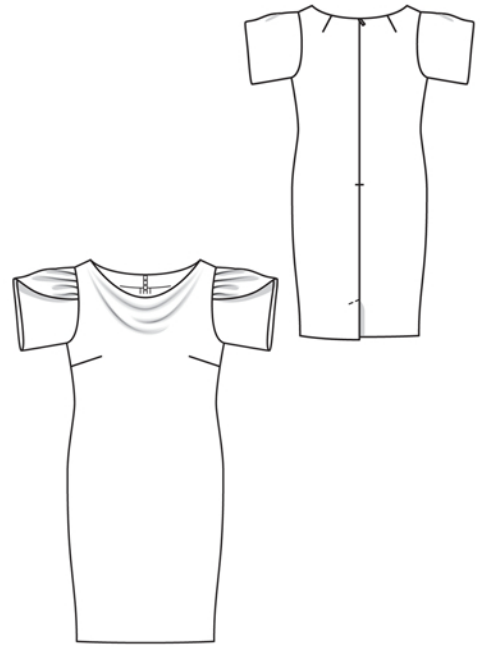
Stitch bust darts. Press darts down. On front, neaten inside edge of self-facing. Turn self-facing to inside on fold line – do not not press fold edge. Baste side facing ends under shoulder edges.

Stitch back darts and press toward centre. Sew invisible zip to back slit edges, see the “Helpful Hint” on next page. Stitch centre back seam from vent to zip. Press seam allowances of centre seam open and press left vent facing to inside. Lay right vent underlap on left back and press seam allowance of right back under, tapering it above vent to avoid needing to clip it. Turn underlap facing back on fold line and press.

Stitch shoulder seams – on neck edge allowance of back extends. Neaten seam allowances together and press onto back.

Pin back facings to neck edge of back pieces, right sides together. At zip slit, turn facing ends back, approx. 5 mm (3/16 in) before marked seam line, and pin to neck edge. At slit edges of dress, turn allowances to outside and pin in place over facing. Stitch facings to neck edge. Trim seam allowances. Turn allowances on slit edges to inside. Turn facings up and stitch to seam allowances, as far as possible, close to seam. Turn facings to inside and sew to zip tapes and to shoulder seams. Stitch side seams. Press seam allowances open.

On each outer sleeve half, use vanishing chalk to mark pleats on right side of fabric. Fold sleeves on fabric fold line, wrong side facing in, and baste edges together. Fold sleeve pleats in direction of arrows and baste. Pin basted-together sleeve edges to armhole edges – side seam line to side seam – right sides facing. Baste back sleeve half to armhole, as far as seam mark (seam number 5), easing sleeve above underarm curve, up to the pleats. Then baste front sleeve half to armhole, as far as seam mark (seam number 3), easing sleeve above underarm curve, up to the pleats – front sleeve end lies over back end. Stitch as basted. Trim seam allowances to 1 cm (3/8 in) wide and neaten edges together. Above underarm curve, press allowances of sleeve attachment seams away from sleeves.



At hem edge, turn back vent facings back. Press hem allowance to inside and sew in place by hand. Turn facings to inside again and sew to hem allowance. Topstitch left back as marked, catching underlap.



These special zippers come in various lengths. The zipper should be at least 2 cm (3/4 in) longer than the slit. It is sewn in place before the seam below the slit is stitched. A special presser foot is required to sew the zipper in place.

Sewing the zipper in place:

Open the zipper and push the coil back with your thumbnail to reveal the seam marking between the tape and the coil. Place the open zipper right side down on the right fabric side of one slit edge.

In order to stitch the zipper in place exactly along the marked seam line, you must first calculate the distance between the tape edge and the fabric edge as follows: width of seam allowance minus 1 cm (3/8 in) tape width = distance from edge of fabric. This will yield a value of 5 mm (3/16 in) if the width of the seam allowance is 1.5 cm (5/8 in).

Pin the top end of the zipper tape in place, the calculated distance from the edge of the fabric. The bottom end of the zipper will extend past the marked end of the slit. Place the presser foot on the zipper so that the coil is in the notch to the right of the needle (1). Stitch zipper in place, from the top to the marked end of the slit. Close zipper.

Place the other zipper tape face down on the opposite slit edge and pin in place at the top. Open zipper again. Place the presser foot on the top end of the zipper so that the coil is in the notch to the left of the needle (2). Sew the zipper in place, from the top to the end of the slit. Close zipper.

Now stitch the seam below the zipper, from bottom to top. Turn the loose lower end of the zipper out of the way, over the seam allowance. Stitch as close as possible to the last stitches of the zipper seams. Trim away excess zipper and bind the end with a scrap of fabric.

Additional Information:

Burda patterns do not include seam and hem allowances. We recommend adding 1-2 cm (3/8 - 3/4 inch) for seams and 2-5 cm (3/4 - 2 inch/es) for hems. Refer to your specific pattern instructions for exact measurements.

The fabric requirements are based on the fabric used for the original designs. These amounts will change if you use fabric of a different width. The pattern of the fabric determines whether all the pieces must be cut in the same direction or whether some can be reversed to save fabric.

The cutting layout printed with the instructions shows the best way to place the pattern pieces on our original fabric. Fold the fabric double with the right side facing in. The fabric then has a fold edge and a selvedge edge. When cutting from a single fabric layer, the right side should face up.

Pattern pieces which are shown in the cutting layout with broken outlines should be pinned to the fabric with their printed side facing down.

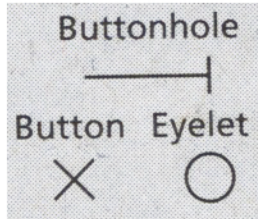
Grey shaded areas in the cutting layout indicate which pieces are to be interfaced.

Transfer the pattern piece lines to the wrong side of your fabric with burda dressmaker's carbon paper. Hand-baste along lines (e.g. for pockets or centre front) to make them visible on the right side of the fabric.

Key Symbols:

Seam numbers

show where pattern pieces must be sewn together. Match pieces with the same numbers.



Seam marks

on long seams. Match the small symbols to one another.



Presser foot is the symbol for seam and top-stitching lines.



Scissors

indicate edges to be cut without seam allowances and also slash lines, e.g. pocket openings.



Pleat symbol

Fold pleat in direction of arrow.



Placket/slit mark

Indicates beginning/ end of placket/slit.



Gather
Ease
Stretch

