

139 Dress

Burda sizes 44, 46, 48, 50, 52

Length from waist 78 cm (30 3/4 ins)

Materials

Stretch satin, with widthwise stretch,
width: 135 cm (53 ins)
length: 2.00 – 2.00 – 2.05 – 2.20 – 2.20 m
(2 1/4 – 2 1/4 – 2 1/4 – 2 1/2 – 2 1/2 yds).

Interfacing.

Fusible batting.

1 invisible zip, 40 cm (16 ins) long.

Fine embroidery thread and magic chalk.

Recommended fabrics: Lightweight, softly draping stretch dress fabrics. Use only fabrics with widthwise or two-way stretch.

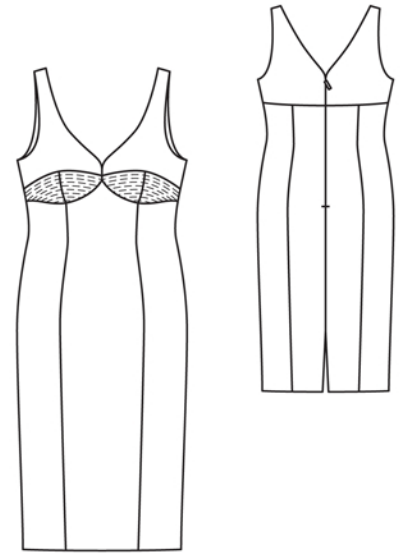
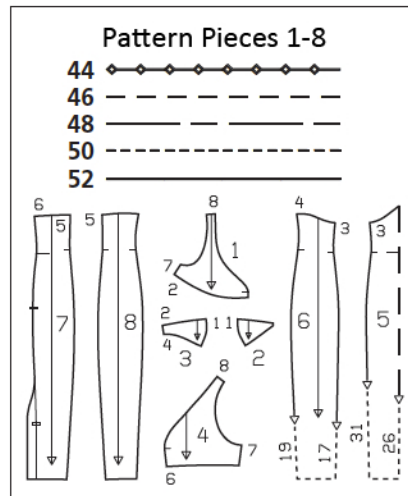
Preparations

Print the pattern out on letter or A4 sized paper. It is **very important** to not scale the document. Your pattern will print on multiple pages, which you will then tile together. Arrange the sheets on a large, hard and flat surface matching up the numbers and letters (i.e. 6A to 6A). Cut or fold one of the sides and match the edge to its corresponding side. Then, tape down in place so paper is secure.

Trace the pattern pieces from the pattern sheet following the lines and markings for style 139 and your size.

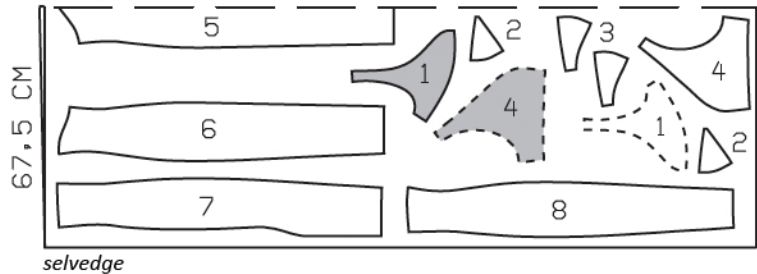
burda style magazine patterns do not have seam allowance included.

Seam and hem allowance to be added:
Seams and edges 1.5 cm (5/8 in), hem 4 cm (1 5/8 ins).



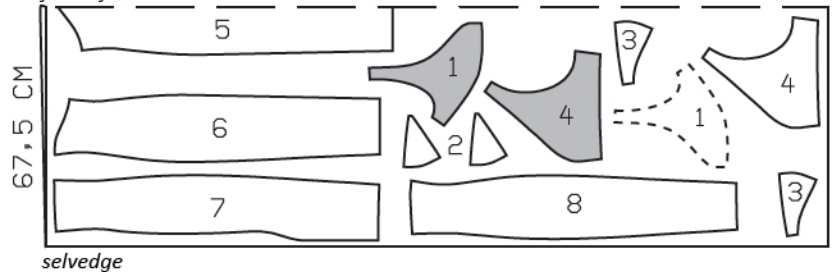
Sizes 44-48

fabric fold



Sizes 50, 52

fabric fold



Cut from a double layer of fabric, right side facing in.

Cutting Out

- 1 front 2x
and for lining 2x
- 2 centre bust piece 2x
and for lining 2x
- 3 side bust piece 2x
and for lining 2x
- 4 back 2x
and for lining 2x
- 5 centre front skirt panel
on a fold 1x
- 6 side front skirt panel 2x
- 7 centre back skirt panel 2x
- 8 side back skirt panel 2x

Interfacing: See shaded area on pattern layout. Iron interfacing to outer pieces. Also iron strips of interfacing, 2 cm (3/4 in) wide, to wrong side of zip slit edges of skirt panels. Baste batting to wrong side of outer bust pieces.

Sewing

On bust pieces, use vanishing chalk to mark lines for hand stitching parallel to upper horizontal seam line, spacing lines 1 cm (3/8 in) apart. Use embroidery thread to hand-stitch running stitches, 8 mm (1/4 in) long and spaced 4 mm (a generous 1/8 in) apart.

Stitch centre bust pieces to side bust pieces. Press seam allowances open. Stitch bust pieces to fronts. Press seam allowances open. Stitch lining pieces together in same manner.

Press allowances on shoulder seam edges of lining to wrong side.

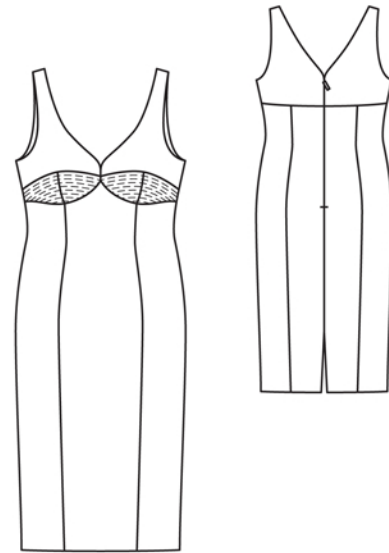
Lay front lining pieces on corresponding pieces of outer fabric, right sides together. Pin to neck and armhole edges. Stitch along front neck edges, above seam marks, and along armhole edges. Trim seam allowances. At end of neck edge (seam mark), turn lining up and pin in place. Lay fronts together, right sides facing. Stitch centre front seam below seam mark. Remove pins. Stitch centre seam of lining. Press seam allowances open. To turn right side out, push shoulder edges to inside and pull down and out. Press faced edges.

Stitch section seams on front skirt panels. Press seam allowances open. On upper point of skirt front, fold allowance down and press. Stitch skirt front to bodice front (seam number 4). Press seam allowances down.

Stitch section seams on back skirt panels. Stitch skirt backs to bodice backs.

Sew invisible zip to back slit edges, see the "Helpful Hint" on next page. Begin at top seam mark and leave upper ends of zip tapes loose. Fold upper ends of zip tapes down and sew in place. Stitch centre back seam from vent to zip.

Lay back lining pieces right sides together with corresponding pieces of outer fabric. Stitch to neck and armhole edges. Trim seam allowances. Turn lining to inside and press edges.



Stitch shoulder seams, not catching lining. Press seam allowances open and slide allowances under lining pieces. Sew shoulder edges of lining closed by hand.

At armhole edges, turn lining up again. Stitch side seams as continuous seams. Turn lining down again. Lay lower lining edge flat over horizontal section seam and stitch to seam allowances, stitching as far as possible at side seams. Turn lining edges under and sew to zip tapes.

Press hem allowance to inside and sew in place by hand. Press allowances at slit edges to inside and sew in place.



These special zippers come in various lengths. The zipper should be at least 2 cm (3/4 in) longer than the slit. It is sewn in place before the seam below the slit is stitched. A special presser foot is required to sew the zipper in place.

Sewing the zipper in place:

Open the zipper and push the coil back with your thumbnail to reveal the seam marking between the tape and the coil. Place the open zipper right side down on the right fabric side of one slit edge.

In order to stitch the zipper in place exactly along the marked seam line, you must first calculate the distance between the tape edge and the fabric edge as follows: width of seam allowance minus 1 cm (3/8 in) tape width = distance from edge of fabric. This will yield a value of 5 mm (3/16 in) if the width of the seam allowance is 1.5 cm (5/8 in).

Pin the top end of the zipper tape in place, the calculated distance from the edge of the fabric. The bottom end of the zipper will extend past the marked end of the slit. Place the presser foot on the zipper so that the coil is in the notch to the right of the needle (1). Stitch zipper in place, from the top to the marked end of the slit. Close zipper.

Place the other zipper tape face down on the opposite slit edge and pin in place at the top. Open zipper again. Place the presser foot on the top end of the zipper so that the coil is in the notch to the left of the needle (2). Sew the zipper in place, from the top to the end of the slit. Close zipper.

Now stitch the seam below the zipper, from bottom to top. Turn the loose lower end of the zipper out of the way, over the seam allowance. Stitch as close as possible to the last stitches of the zipper seams. Trim away excess zipper and bind the end with a scrap of fabric.

Additional Information:

Burda patterns do not include seam and hem allowances. We recommend adding 1-2 cm (3/8 - 3/4 inch) for seams and 2-5 cm (3/4 - 2 inch/es) for hems. Refer to your specific pattern instructions for exact measurements.

The fabric requirements are based on the fabric used for the original designs. These amounts will change if you use fabric of a different width. The pattern of the fabric determines whether all the pieces must be cut in the same direction or whether some can be reversed to save fabric.

The cutting layout printed with the instructions shows the best way to place the pattern pieces on our original fabric. Fold the fabric double with the right side facing in. The fabric then has a fold edge and a selvedge edge. When cutting from a single fabric layer, the right side should face up.

Pattern pieces which are shown in the cutting layout with broken outlines should be pinned to the fabric with their printed side facing down.

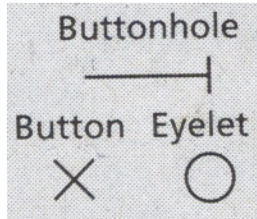
Grey shaded areas in the cutting layout indicate which pieces are to be interfaced.

Transfer the pattern piece lines to the wrong side of your fabric with burda dressmaker's carbon paper. Hand-baste along lines (e.g. for pockets or centre front) to make them visible on the right side of the fabric.

Key Symbols:

Seam numbers

show where pattern pieces must be sewn together. Match pieces with the same numbers.



Seam marks

on long seams. Match the small symbols to one another.



Presser foot is the symbol for seam and top-stitching lines.



Scissors

indicate edges to be cut without seam allowances and also slash lines, e.g. pocket openings.



Pleat symbol

Fold pleat in direction of arrow.



Placket/slit mark

Indicates beginning/ end of placket/slit.



Gather
Ease
Stretch

