

138 Coat

Burda sizes 44, 46, 48, 50, 52

Back length approx. 115 cm (45 ins)

Materials

Matelassé,

width: 150 cm (59 ins)

length: 2.40 – 2.45 – 2.60 – 2.60 – 2.60 m
(2 5/8 – 2 3/4 – 2 7/8 – 2 7/8 – 2 7/8 yds).

Lining,

width: 140 cm (55 ins)

length: 2.00 m (2 1/4 yds) for all sizes.

Interfacing.

4 small hooks and eyes and shoulder pads.

Recommended fabrics: Lightweight coat fabrics with some body.

Preparations

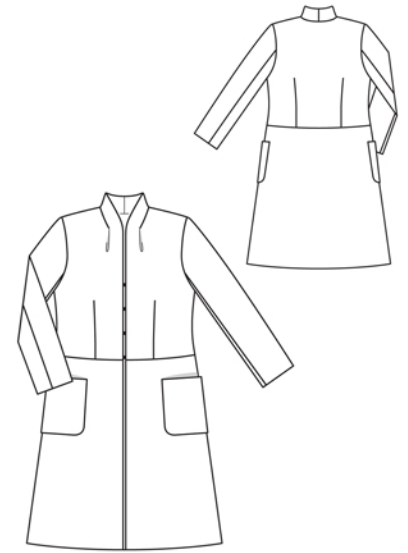
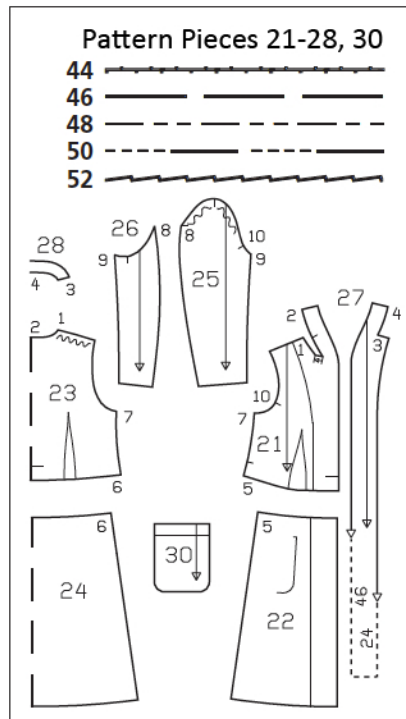
Print the pattern out on letter or A4 sized paper. It is **very important** to not scale the document. Your pattern will print on multiple pages, which you will then tile together. Arrange the sheets on a large, hard and flat surface matching up the numbers and letters (i.e. 6A to 6A). Cut or fold one of the sides and match the edge to its corresponding side. Then, tape down in place so paper is secure.

Trace the pattern pieces from the pattern sheet following the lines and markings for style 138 and your size. The pleat arrow on piece 21 is marked for size 44. For the other sizes, mark the pleat arrow according to the size lines.

burda style magazine patterns do not have seam allowance included.

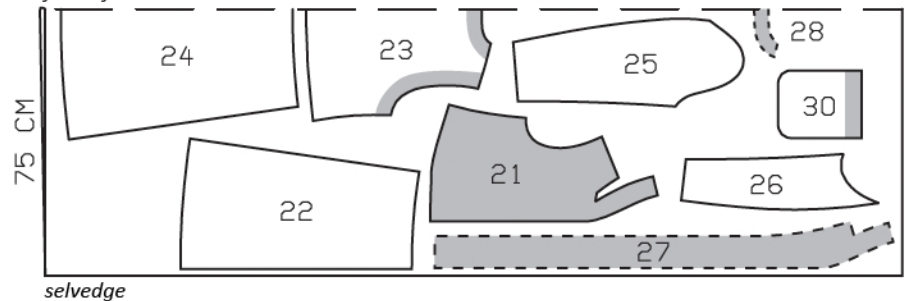
Seam and hem allowance to be added:

Seams and edges 1.5 cm (5/8 in), attachment edge of collar and at neck edge 1 cm (3/8 in), hem and sleeve hems 4 cm (1 5/8 ins). Cut lining pieces with 1.5 cm (5/8 in) wide seam and hem allowances.



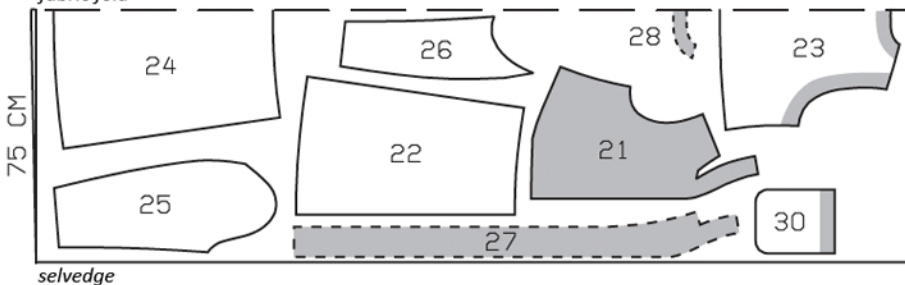
Sizes 44, 46

fabric fold



Sizes 48-52

fabric fold



Cut from a double layer of fabric, right side facing in.

Cutting Out

Matelassé:

21 upper front	with integrated collar	2x
22 lower front		2x
23 upper back, on a fold		1x
24 lower back, on a fold		1x
25 upper sleeve		2x
26 under sleeve		2x
27 front facing	with integrated collar	2x
28 back facing, on a fold		1x
30 pocket		2x

Lining: pieces 21 and 22 to lining line; piece 23 minus neck facing and with an ease pleat of approx. 2 cm (3/4 in) at centre back; piece 24 with an ease pleat of approx. 2 cm (3/4 in) at centre back; piece 30 minus width of facing; and also pieces 25 and 26.

Interfacing: See shaded area on pattern layout. Also interface hem allowances.

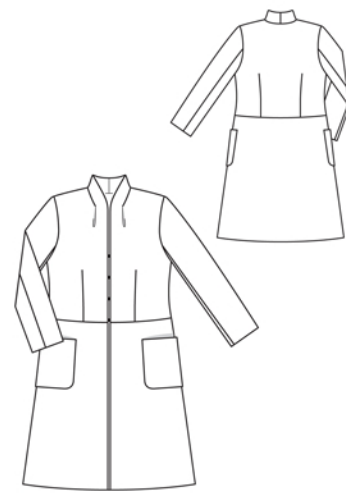
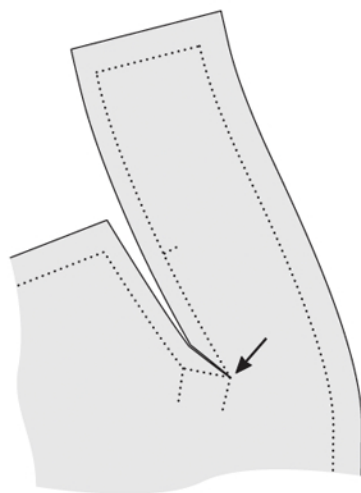
Sewing

Stitch front and back darts. Trim dart allowances to 1 cm (3/8 in) wide and press open, pressing pointed ends of darts flat. Stitch shoulder seams (seam number 1). Press seams open.

On integrated collar sections of fronts, stitch centre back seam. Press seam open. At beginning and end of collar attachment edge, clip allowance diagonally toward front corner, up to pleat line (see illustration). Fold each front so that pleat lines meet, right side facing in. Stitch across upper pleat end along marked seam line. Work from centre back to stitch collar to back and front, right sides facing. Press seam allowances onto collar, turning pleat folds forward to do so. Do not press pleats.

Stitch lower fronts to upper fronts and stitch lower back to upper back. Press seams open. Stitch side seams.

Patch pockets: Stitch pocket lining to self-facing of each pocket, leaving approx. 4 cm (1 5/8 ins) open at centre, for turning. Turn facings and lining to outside and stitch to side and lower pocket edges. Turn pockets right side out and press. Sew seam opening closed. Pin narrow petersham ribbon to side and lower pocket edges,



Turn pockets right side out and press. Sew seam opening closed. Pin pockets to fronts at placement lines. Edgestitch pockets in place and stitch horizontally on upper pocket corners.

On integrated collar sections of front facings, stitch centre back seam. Stitch back facing to shoulder edges of front facings and to inside collar edge, clipping seam allowances into corners. Pin facing to jacket, right sides together, pinning collar edges together. Stitch along hem edge, front edges, and collar edges – at hem edge, leave the last 3 cm (1 1/4 ins) before facing edges open. Turn facing to inside and turn hem allowance to inside. Press edges. Pin back collar attachment seams together and sew together along seams.

Stitch back sleeve seams. Press seam allowances open. Stitch front sleeve seams. Press sleeve hem allowances to inside and sew in place by hand. Set in sleeves, easing sleeve caps. Sew shoulder pads in place.

Sew lining: Stitch darts in lining and press toward centre. Stitch horizontal seams on lining pieces. Press allowances down. On lining back, stitch ease pleat at top and bottom each approx. 5 cm (2 ins) long, and baste in between. Press pleat to one side. Stitch side seams, shoulder seams and sleeve seams of lining. Set in sleeve linings.

Sew lining to jacket, hem jacket: Stitch lining to inside facing edge, turning lower facing edges down to do so. Lay lining in jacket, wrong sides facing, pulling linings into sleeves. Sew hem allowance in place by hand. Turn lining under along hem edge and press fold edge lightly. Push upward in a shallow curve and pin to hem allowance. Sew facings and lining in place. Lay extra length of lining down and press lightly. Above each sleeve hem, pin a fold, approx. 1 cm (3/8 in) deep, in lining. Turn edges of sleeve linings under and sew to hem allowances. Lay extra length down and press.

Sew hooks and eyes to inside front edges: first at level of horizontal seam, then above this, spaced approx. 8.5 cm (33/8 ins) apart.

Additional Information:

Burda patterns do not include seam and hem allowances. We recommend adding 1-2 cm (3/8 - 3/4 inch) for seams and 2-5 cm (3/4 - 2 inch/es) for hems. Refer to your specific pattern instructions for exact measurements.

The fabric requirements are based on the fabric used for the original designs. These amounts will change if you use fabric of a different width. The pattern of the fabric determines whether all the pieces must be cut in the same direction or whether some can be reversed to save fabric.

The cutting layout printed with the instructions shows the best way to place the pattern pieces on our original fabric. Fold the fabric double with the right side facing in. The fabric then has a fold edge and a selvedge edge. When cutting from a single fabric layer, the right side should face up.

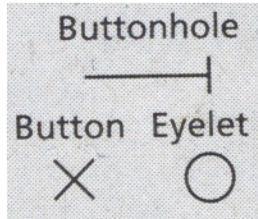
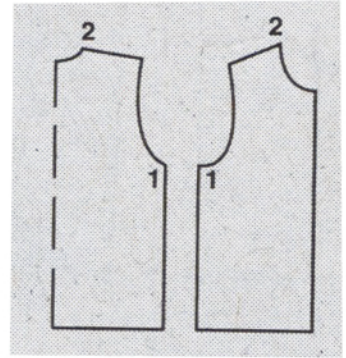
Pattern pieces which are shown in the cutting layout with broken outlines should be pinned to the fabric with their printed side facing down.

Grey shaded areas in the cutting layout indicate which pieces are to be interfaced.

Transfer the pattern piece lines to the wrong side of your fabric with burda dressmaker's carbon paper. Hand-baste along lines (e.g. for pockets or centre front) to make them visible on the right side of the fabric.

Key Symbols:

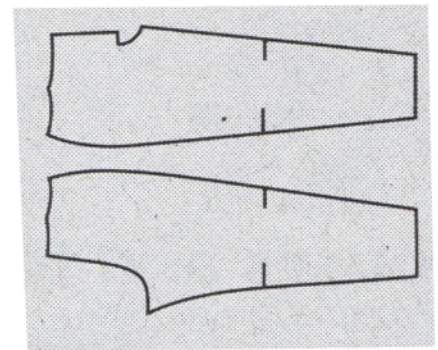
Seam numbers
show where pattern pieces must be sewn together. Match pieces with the same numbers.



Seam marks
on long seams. Match the small symbols to one another.



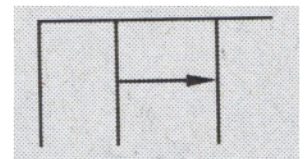
Presser foot
is the symbol for seam and top-stitching lines.



Scissors
indicate edges to be cut without seam allowances and also slash lines, e.g. pocket openings.



Pleat symbol
Fold pleat in direction of arrow.



Placket/slit mark
Indicates beginning/end of placket/slit.

