

### 134 Top

Burda sizes 36, 38, 40, 42, 44

Back length approx. 52 cm (20 1/2 ins)

### Materials

Georgette with lengthwise tucks, width: 95 cm (38 ins)  
length: 1.25 – 1.25 – 1.30–1.30–1.30m (1 1/2 yds).

Satin for binding, a piece 50 x 50 cm (20 x 20 ins), or bias tape, 4 cm (1 5/8 ins) wide and 1.70 m (1 7/8 yds) long.

Recommended fabrics: Lightweight fabrics.

### Preparations

Print the pattern out on letter or A4 sized paper. It is **very** important to not scale the document. Your pattern will print on multiple pages, which you will then tile together. Arrange the sheets on a large, hard and flat surface matching up the numbers and letters (i.e. 6A to 6A). Cut or fold one of the sides and match the edge to its corresponding side. Then, tape down in place so paper is secure.

Trace the pattern pieces from the pattern sheet following the lines and markings for style 134 and your size.

**burda style magazine patterns do not have seam allowance included.**

Seam and hem allowance to be added:

Seams and edges 1.5 cm (5/8 in), hem 4 cm (1 5/8 ins).

### Cutting Out

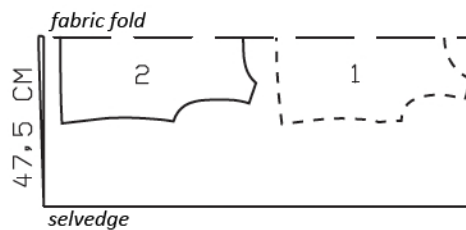
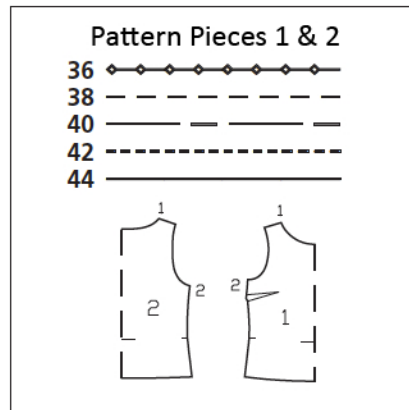
Georgette:

1 front, on a fold 1x  
2 back, on a fold 1x

Satin: Draft the following pieces,

bias binding strip for neck edge, 60 – 62 – 63 – 64 – 65 cm (23 3/4 – 24 1/2 – 24 3/4 – 25 1/4 – 25 3/4 ins) long, 3 cm (1 1/4 ins) wide (incl. allowances),

2 bias binding strips for armholes, 49 – 51 – 53 – 54 – 56 cm (19 1/4 – 20 1/4 – 21 – 21 1/4 – 22 1/4 ins) long, 3 cm (1 1/4 ins) wide (incl. allowances).



Cut from a double layer of fabric, right side facing in.

### Sewing

Stitch bust darts. Press darts down.

Stitch one shoulder seam. Begin stitching exactly on marked neck edge. Neaten seam allowances together and press onto back.

Neck edge: Trim away allowance on neck edge. Fold binding strip in half lengthwise, right side facing out, and press. Unfold strip out flat again. Now fold each long edge of strip in to the pressed fold and press again. Unfold pressed binding strip and pin to inside neck edge. Stitch binding in place, 7 mm (1/4 in) from edge, along the fold. Fold binding out over edge, turn edge under, and baste. Edgestitch binding in place.

Stitch second shoulder seam. Press allowances onto back. Sew ends of allowances to neck edge.

Bind armhole edges as described for neck edge.

Stitch side seams. Sew upper ends of seam allowances in place.

Press hem allowance to inside and sew in place by hand.