

132 Blouse

Burda sizes 36, 38, 40, 42, 44

Back length approx. 63 cm (25 ins)

Materials

Chiffon,
width: 140 cm (55 ins)
length: 1.45 – 1.45 – 1.45 – 1.70 – 1.70 m
(1 3/4 – 1 3/4 – 1 3/4 – 1 7/8 – 1 7/8 yds).

Soft petersham ribbon, 1 cm (3/8 in) wide and 1.70 – 1.75 – 1.80 – 1.85 – 1.90 m (1 7/8 – 2 – 2 – 2 1/8 – 2 1/8 yds) long.

Soft petersham ribbon, 2.5 cm (1 in) wide and 1.10 m (1 1/4 yds) long.

Interfacing.

7 small flat buttons.

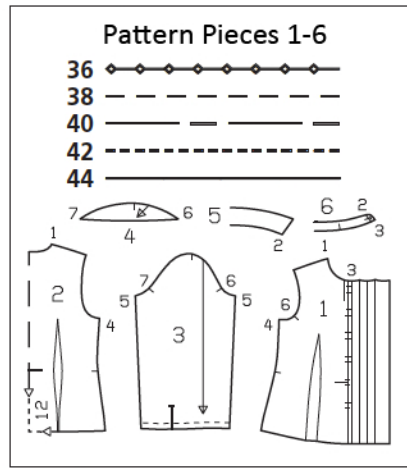
2 sew-on snap fasteners.

Recommended fabrics: Lightweight, softly draping blouse fabrics.

Preparations

Print the pattern out on letter or A4 sized paper. It is **very** important to not scale the document. Your pattern will print on multiple pages, which you will then tile together. Arrange the sheets on a large, hard and flat surface matching up the numbers and letters (i.e. 6A to 6A). Cut or fold one of the sides and match the edge to it's corresponding side. Then, tape down in place so paper is secure.

Trace the pattern pieces from the pattern sheet following the lines and markings for style 132 and your size. Note different lines for right and left fastening edge on front but cut the right and left pieces the same size initially. The buttonholes on piece 1 are marked for size 36. For sizes 38 – 44, mark the top buttonhole the same distance from neck edge as for size 36. The bottom buttonhole is the same for all sizes. Space the other buttonholes evenly in between.



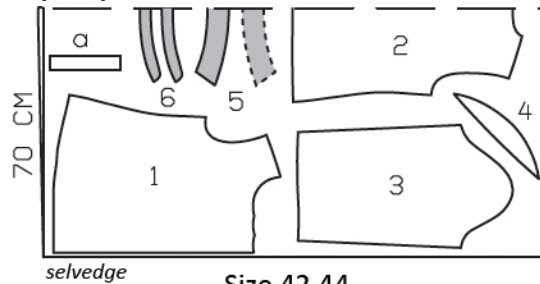
burda style magazine patterns do not have seam allowance included.

Seam and hem allowance to be added:

Seams and edges 1.5 cm (5/8 in), hem 2 cm (3/4 in), no allowance on vertical edge of front self-facing and no allowance on lower flounce edge

Sizes 36-40

fabric fold

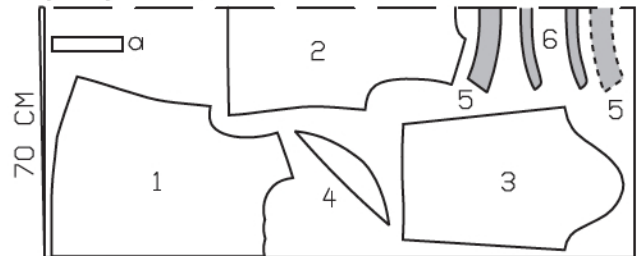


selvedge

Cut from a double layer of fabric, right side facing in.

Size 42,44

fabric fold



selvedge

Cutting Out

1 front	2x	4 sleeve flounce	2x
2 back, on a fold	1x	5 collar, on a fold	2x
3 sleeve	2x	6 collar stand, on a fold	2x

Draft the following piece NOT included in the pattern:

a) 2 binding strips for sleeve vents, 20 cm (8 ins) long, 4 cm (1 5/8 ins) wide (incl. allowances).

Interfacing: See shaded area on pattern layout.

Sewing

Stitch front and back darts. Press darts toward centre.

Sew side seams and shoulder seams as French seams: First lay the fabric pieces together, wrong sides facing, and stitch the 1.5 cm (5/8 in) wide seam allowances together, 7 mm (1/4 in) from the edge. Press seam allowances open. Then lay pieces together, right sides facing, with the seam exactly along the fold. Now stitch 8 mm (a generous 1/4 in) from fold edge, along marked seam line. Press seam allowances to one side.

Press hem allowance to inside, turn half under, and stitch.

On left front, trim self-facing to marked "left edge" line. Turn left self-facing to inside, turn edge under along fold line, and stitch.

On right front, press self-facing to inside on marked "right fold" line, then press facing to inside, 5.5 cm (2 1/4 ins) wide (fold). Stitch from outer side as marked. Work buttonholes in right front. Fold right front edge to outside, 3 cm (1 1/4 ins) wide, for band, and press. Baste to upper edge and sew to hem edge. Hold fold edge of band in place between buttonholes, with a few stitches by hand.

Stitch collar pieces together along outer edges, right sides facing. Trim seam allowances. Turn collar right side out and press. Stitch 1 cm (3/8 in) wide petersham ribbon to outer collar edges, making small folds in ribbon at corners. Lay collar stand pieces together, right sides facing, with collar between. Stitch along front and upper collar stand edges, beginning and ending stitching in front, exactly at seam line on attachment edge. Trim seam allowances. Turn collar band right side out. Stitch outer collar stand piece to neck edge of blouse. Press seam allowances onto collar stand. Turn inside collar stand edge under and baste to attachment seam. Top-stitch collar stand close to all edges. Work buttonhole in right end of collar stand.



Slash sleeve vents as marked. Fold binding strips in half lengthwise, right side facing out, and press. Spread cut edges open to a straight line and stitch to folded long edges of binding strip, 7 mm (1/4 in) from edge, tapering stitching at top of vent. Press binding strip over attachment seam into vent, then fold to a width of 7 mm (1/4 in), and baste fold edge to inside, over attachment seam. Stitch from outer side, along seam. On inside upper end of vent, stitch diagonally across binding. On front vent edges, turn binding to inside and baste to lower edge.

Lay sleeve flounces on sleeves, with wrong side facing right side. Baste to sleeve caps, from seam number 6 to seam number 7. Sew sleeve seams as French seams.

Gather lower sleeve edges to 22 – 23 – 23 – 24 – 24 cm (8 3/4 – 9 1/8 – 9 1/8 – 9 1/2 – 9 1/2 ins). Cut the 2.5 cm (1 in) wide petersham ribbon into 2 equal pieces. Turn in one end of each ribbon, approx. 1 cm (3/8 in) wide, and press. Beginning at this end, measure and mark 22 – 23 – 23 – 24 – 24 cm (8 3/4 – 9 1/8 – 9 1/8 – 9 1/2 – 9 1/2 ins). Lay ribbon on seam allowance on inside lower edge of each sleeve, so that pressed-under end meets back vent edge and marking meets front vent edge. Edgestitch upper edge of ribbon in place. Fold ribbon out over front vent edge and pin ribbon edges together, catching seam allowance of sleeve. Turn ribbon end under. Edgestitch ribbon edges together. Fasten cuffs with one snap each.

Set in sleeves. Pin 1 cm (3/8 in) wide petersham ribbon to front and back, along each sleeve attachment seam, beginning at the side seam and turning under end of ribbon which lies on top. Edgestitch ribbon in place.

Additional Information:

Burda patterns do not include seam and hem allowances. We recommend adding 1-2 cm (3/8 - 3/4 inch) for seams and 2-5 cm (3/4 - 2 inch/es) for hems. Refer to your specific pattern instructions for exact measurements.

The fabric requirements are based on the fabric used for the original designs. These amounts will change if you use fabric of a different width. The pattern of the fabric determines whether all the pieces must be cut in the same direction or whether some can be reversed to save fabric.

The cutting layout printed with the instructions shows the best way to place the pattern pieces on our original fabric. Fold the fabric double with the right side facing in. The fabric then has a fold edge and a selvedge edge. When cutting from a single fabric layer, the right side should face up.

Pattern pieces which are shown in the cutting layout with broken outlines should be pinned to the fabric with their printed side facing down.

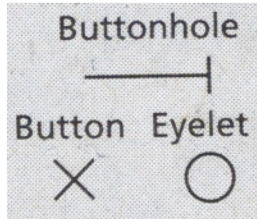
Grey shaded areas in the cutting layout indicate which pieces are to be interfaced.

Transfer the pattern piece lines to the wrong side of your fabric with burda dressmaker's carbon paper. Hand-baste along lines (e.g. for pockets or centre front) to make them visible on the right side of the fabric.

Key Symbols:

Seam numbers

show where pattern pieces must be sewn together. Match pieces with the same numbers.



Seam marks

on long seams. Match the small symbols to one another.



Presser foot is the symbol for seam and top-stitching lines.



Scissors

indicate edges to be cut without seam allowances and also slash lines, e. g. pocket openings.



Pleat symbol

Fold pleat in direction of arrow.



Placket/slit mark

Indicates beginning/ end of placket/slit.



Gather
Ease
Stretch

