

### 106 Jacket

Burda sizes 36, 38, 40, 42, 44

Back length approx. 52 cm (20 1/2 ins)

3/4-sleeves, approx. 48 cm (19 ins) long

### Materials

Bouclé,  
width: 150 cm (59 ins)  
length: white, 1.00 m (1 1/8 yds)  
black, 0.75 m (7/8 yd).

Lining,  
width: 140 cm (55 ins)  
length: 1.10 m (1 1/4 yds).

Interfacing.

Lightweight shoulder pads.

A small piece of batting.

4 large sew-on snap fasteners.

Recommended fabrics: Jacket fabrics of wool or blends.

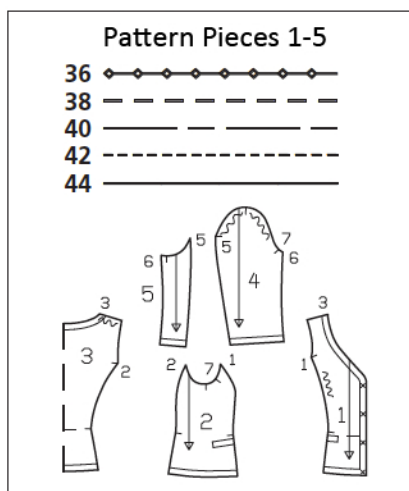
### Preparations

Print the pattern out on letter or A4 sized paper. It is **very** important to not scale the document. Your pattern will print on multiple pages, which you will then tile together. Arrange the sheets on a large, hard and flat surface matching up the numbers and letters (i.e. 6A to 6A). Cut or fold one of the sides and match the edge to its corresponding side. Then, tape down in place so paper is secure.

Trace the pattern pieces from the pattern sheet following the lines and markings for style 106 and your size.

Cut pieces 1 to 5 apart on the marked band attachment line. Glue band pieces 1 and 2 together at the front section seam and glue pieces 4 and 5 together at the back sleeve seam.

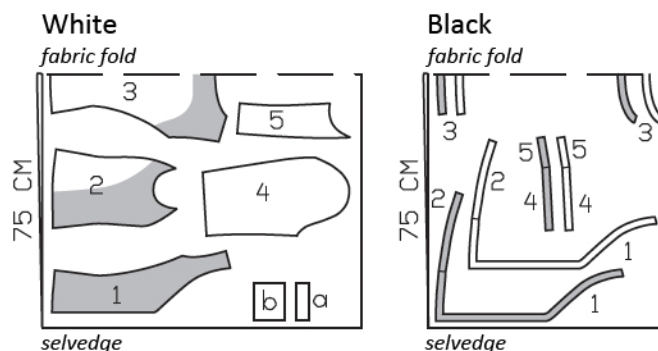
The snap fasteners marked on piece 1 are for size 36. For the other sizes, mark the top fastener the same distance from neck edge as for size 36. The bottom snap is the same for all sizes. Space the other snaps evenly in between.



**burda style magazine patterns do not have seam allowance included.**

Seam and hem allowance to be added:

Seams and edges 1.5 cm (5/8 in). Cut lining pieces with 1.5 cm (5/8 in) wide seam allowances and 3 cm (1 1/4 in) wide hem allowances.



Cut from a double layer of fabric, right side facing in.

### Cutting Out

White fabric:

- 1 front 2x
- 2 side piece 2x
- 3 back, on a fold 1x
- 4 upper sleeve 2x
- 5 under sleeve 2x

Draft the following pieces NOT included in the pattern:

- a) 2 welt strips, 14 cm (5 1/2 ins) long, 7 cm (2 3/4 ins) wide (incl. allowances),
- b) 2 pocket pieces, 14 cm (5 1/2 ins) wide, 12 cm (4 3/4 ins) long (incl. allowances).

### Cutting Out Continued...

Black fabric:

- 1 + 2 front band 4x
- 3 back hem band, on a fold 2x
- 3 back neck band, on a fold 2x
- 4 + 5 sleeve band 4x

Lining: piece 3, with an ease pleat of approx. 2 cm (3/4 in) at centre back; pieces 1, 2, 4 and 5; and also piece b.

Interfacing: See shaded area on pattern layout. Interface outer band pieces.

### Sewing

Stitch side pieces to front pieces, easing fronts from • to •. Press seam allowances open.

Single welt pockets: For each welt, mark a placement line, 2 cm (3/4 in) from welt attachment line (= finished width of welt). Fold welt strips lengthwise, right side facing out, and press. Baste folded welts over welt attachment lines so that fold edge of each welt meets placement line and open long edges lie between pocket lines. Stitch welts in place along welt attachment lines. Stitch fabric pocket pieces to pocket piece attachment lines. Slash between lines of stitching and clip diagonally toward each last stitch, not cutting welts or pocket pieces. Turn welts toward pocket opening and pull pocket pieces to inside. Stitch pocket lining pieces to seam allowances of welt attachment seams. Fold small triangles at pocket opening ends to inside and stitch to welts and pocket pieces, from seam end to seam end. Trim pocket pieces even and stitch together.

Stitch side pieces to back pieces. Stitch shoulder seams.

Stitch back section seams and shoulder seams on interfaced band pieces and on band pieces with no interfacing. Press seam allowances open.

Stitch interfaced outer band to jacket, clipping seam allowance of band into corners. Trim seam allowances and press open.



Lay inside band on attached band, right sides facing. Stitch together along hem edge, front edges, and neck edge. Trim seam allowances, trimming corners diagonally. Turn inside band to inside. Press edges. Lay inside band edge flat over attachment seam, not turned under. Work from right side of garment to stitch along line of seam.

Stitch back sleeve seams. Stitch outer sleeve band pieces to lower sleeve edges. Trim seam allowances and press open. Stitch front sleeve seams. Stitch seam of inside sleeve band. Lay inside bands on attached bands, right sides facing. Stitch lower edges together. Turn inside bands to inside. Lay inside edge of bands over attachment seams, not turned under. Work from right side of garment to stitch along lines of seams.

Set in sleeves, easing sleeve caps. Lay strips of batting, approx. 3 cm (1 1/4 ins) wide, under sleeve caps and sew to seam allowances. Sew shoulder pads in place.

Sew lining: On lining back, stitch ease pleat at top and bottom, each approx. 5 cm (2 ins) long, and baste in between. Press pleat to one side. Stitch seams of lining. Set in sleeve linings.

Lay lining in jacket with wrong sides facing, pulling linings into sleeves. At front and neck edges, turn lining edges under and pin to band attachment seams. At lower jacket edge, slide lining up slightly, turn edge under, and sew to band attachment seam. Lay extra length down and press. Sew remaining edges of lining in place. On each sleeve, turn lining edge under and sew to band attachment seam. Lay extra length down and press.

Cover snap fastener halves with lining fabric. Sew top halves of snaps on inside of right front band as marked, not exiting needle on right fabric side. Lay jacket, closed matching centre fronts. Mark placement of lower snap halves on left front. Sew lower snap halves in place as marked.

## Additional Information:

**Burda patterns do not include seam and hem allowances.** We recommend adding 1-2 cm (3/8 - 3/4 inch) for seams and 2-5 cm (3/4 - 2 inch/es) for hems. Refer to your specific pattern instructions for exact measurements.

The fabric requirements are based on the fabric used for the original designs. These amounts will change if you use fabric of a different width. The pattern of the fabric determines whether all the pieces must be cut in the same direction or whether some can be reversed to save fabric.

The cutting layout printed with the instructions shows the best way to place the pattern pieces on our original fabric. Fold the fabric double with the right side facing in. The fabric then has a fold edge and a selvedge edge. When cutting from a single fabric layer, the right side should face up.

Pattern pieces which are shown in the cutting layout with broken outlines should be pinned to the fabric with their printed side facing down.

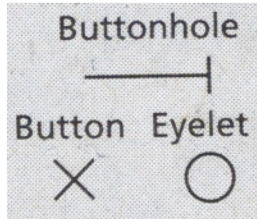
Grey shaded areas in the cutting layout indicate which pieces are to be interfaced.

Transfer the pattern piece lines to the wrong side of your fabric with burda dressmaker's carbon paper. Hand-baste along lines (e.g. for pockets or centre front) to make them visible on the right side of the fabric.

## Key Symbols:

### Seam numbers

show where pattern pieces must be sewn together. Match pieces with the same numbers.



### Seam marks

on long seams. Match the small symbols to one another.



**Presser foot** is the symbol for seam and top-stitching lines.



### Scissors

indicate edges to be cut without seam allowances and also slash lines, e.g. pocket openings.



### Pleat symbol

Fold pleat in direction of arrow.



### Placket/slit mark

Indicates beginning/ end of placket/slit.



**Gather**  
**Ease**  
**Stretch**

