

135 Top

Burda sizes 36, 38, 40, 42, 44

Back length approx. 64 cm (25 ins)

Materials

Viskose crêpe,
width: 140 cm (55 ins)
length: 1.50 – 1.50 – 1.55 – 1.55 – 1.55m (1 3/4 yds).

Satin in contrasting colour for tie bands and bow, a piece 75 x 65 cm (30 x 26 ins).

Interfacing.

Recommended fabrics: Lightweight fabrics.

Preparations

Print the pattern out on letter or A4 sized paper. It is **very important** to not scale the document. Your pattern will print on multiple pages, which you will then tile together. Arrange the sheets on a large, hard and flat surface matching up the numbers and letters (i.e. 6A to 6A). Cut or fold one of the sides and match the edge to its corresponding side. Then, tape down in place so paper is secure.

Trace the pattern pieces from the pattern sheet following the lines and markings for style 135 and your size.

burda style magazine patterns do not have seam allowance included.

Seam and hem allowance to be added:

Seams and edges 1.5 cm (5/8 in), hem 6 cm (2 1/2 ins), sleeve hems 3 cm (1 1/4 ins), slit edges 3 cm (1 1/4 ins).

Cutting Out

Viskose crêpe:

1 front, on a fold 1x

2 back, on a fold 1x

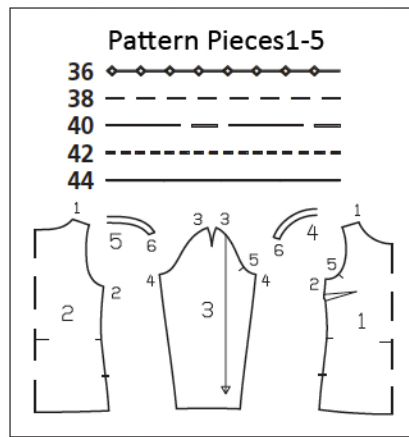
3 sleeve 2x

4 front neck facing, on a fold 1x

5 back neck facing, on a fold 1x

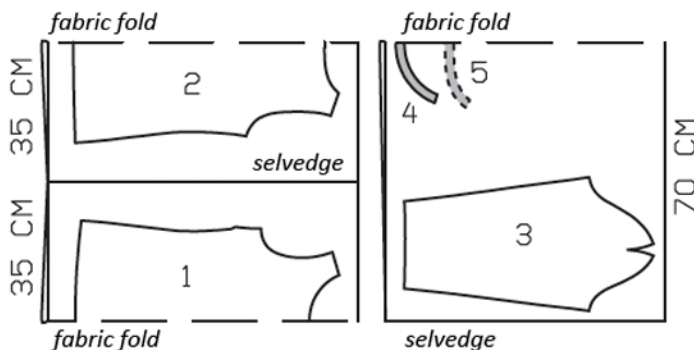
Satin: **Draft the following pieces:**

bias strip for neck edge, 64 – 64 – 64.5 – 65 – 65 cm (25 1/4 – 25 1/4 – 25 1/2 – 25 3/4 – 25 3/4 ins) long, 2 cm (3/4 in) wide (incl. allowances),



2 bias strips for sleeves, 24 – 24.5 – 25 – 25.5 – 26 cm (9 1/2 – 9 3/4 – 9 7/8 – 10 – 10 1/4 ins) long, 2 cm (3/4 ins) wide, cut without allowance, 2 tie bands, cut on bias, 85 cm (33 1/2 ins) long, 4 cm (1 5/8 ins) wide (incl. allowances).

Interfacing: See shaded area on pattern layout.



Fold the fabric as shown in the pattern layout, right side facing in.

Sewing

Stitch bust darts. Press darts down.

Stitch shoulder seams on top and on facing. Neaten seam allowances together and press onto back.

On facing, trim allowance inside edge to 7 mm (1/4 in) wide and press to inside. Stitch facing to neck edge, right sides together. Trim seam allowances. Turn facing to inside and press edge.

On bias strip for neck edge, stitch ends together, 1 cm (3/8 in) from edge. Press seam allowances open. Pin bias strip to neck edge, with wrong side facing right side, matching seam to one shoulder seam. Edgestitch edges in place.

Stitch side seams, leaving slits open. Press seam allowances open.

Sewing Continued...

Stitch darts in sleeve caps. Press toward back. Stitch sleeve seams. Turn sleeve hem allowances to inside, turn edges under to a hem width of 2 cm (3/4 in), and baste.

On each bias strip for sleeve, stitch ends together 1 cm (3/8 in) from edge. Press seam allowances open. Pin bias strips to lower sleeve edges, with wrong side facing right side, matching seam to sleeve seam. Edgestitch strips in place.

Set in sleeves.

Press hem allowance to inside and stitch 5 cm (2 ins) from lower edge. Turn edges of slit allowances under. Stitch 1 cm (3/8 in) from slit edges and stitch across top of slit.

Lay both pieces for tie band together, wrong sides facing. Stitch edges together 1 cm (3/8 in) from edge, angling stitching at ends. Trim edges close to stitching. Tie band in a bow and sew to centre front neck edge.



Additional Information:

Burda patterns do not include seam and hem allowances. We recommend adding 1-2 cm (3/8 - 3/4 inch) for seams and 2-5 cm (3/4 - 2 inch/es) for hems. Refer to your specific pattern instructions for exact measurements.

The fabric requirements are based on the fabric used for the original designs. These amounts will change if you use fabric of a different width. The pattern of the fabric determines whether all the pieces must be cut in the same direction or whether some can be reversed to save fabric.

The cutting layout printed with the instructions shows the best way to place the pattern pieces on our original fabric. Fold the fabric double with the right side facing in. The fabric then has a fold edge and a selvedge edge. When cutting from a single fabric layer, the right side should face up.

Pattern pieces which are shown in the cutting layout with broken outlines should be pinned to the fabric with their printed side facing down.

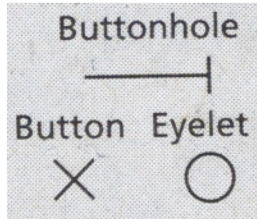
Grey shaded areas in the cutting layout indicate which pieces are to be interfaced.

Transfer the pattern piece lines to the wrong side of your fabric with burda dressmaker's carbon paper. Hand-baste along lines (e.g. for pockets or centre front) to make them visible on the right side of the fabric.

Key Symbols:

Seam numbers

show where pattern pieces must be sewn together. Match pieces with the same numbers.



Seam marks

on long seams. Match the small symbols to one another.



Presser foot is the symbol for seam and top-stitching lines.



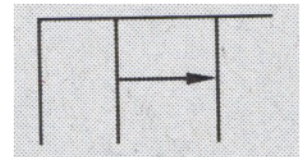
Scissors

indicate edges to be cut with-out seam allowances and alsoslash lines, e. g. pocket openings.



Pleat symbol

Fold pleat in direction of arrow.



Placket/slit mark

Indicates beginning/ end of placket/slit.



Gather
Ease
Stretch

