

107B Tunic

Burda sizes 34, 36, 38, 40, 42, 44

Back length approx. 75 cm (30 ins)

Materials

Matelassé,
width: 140 cm (55 ins)
length: 1.15–1.15–1.15–1.20–1.20–1.20m (1 3/8 yds).

Interfacing.

Bias tape, 4 cm (1 5/8 ins) wide and 1.00 m (40 ins) long.

1 invisible zip, 40 cm (16 ins) long.

Recommended fabrics: Fabrics with some body.

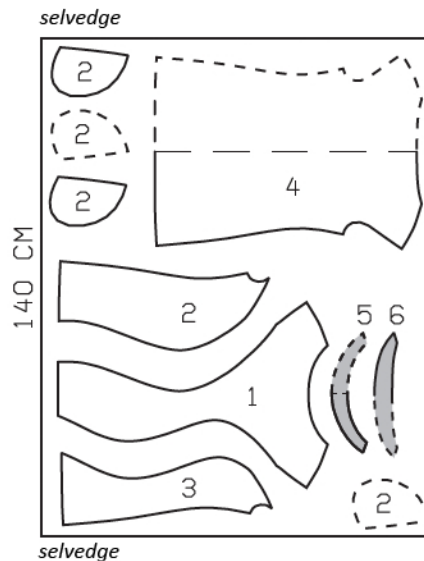
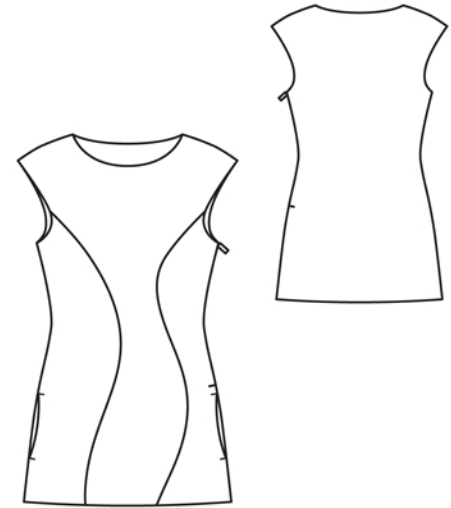
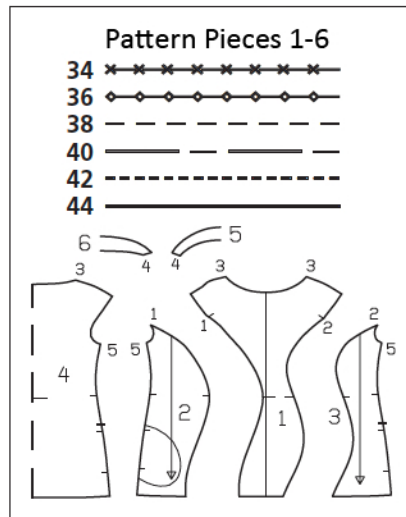
Preparations

Print the pattern out on letter or A4 sized paper. It is **very important** to not scale the document. Your pattern will print on multiple pages, which you will then tile together. Arrange the sheets on a large, hard and flat surface matching up the numbers and letters (i.e. 6A to 6A). Cut or fold one of the sides and match the edge to its corresponding side. Then, tape down in place so paper is secure.

Trace the pattern pieces from the pattern sheet following the lines and markings for style 107B and your size. Trace the pocket piece from piece 2 as a separate pattern piece – it is the same for all sizes.

burda style magazine patterns do not have seam allowance included.

Seam and hem allowance to be added:
Seams and edges 1.5 cm (5/8 in), curved seams 1 cm (3/8 in), hem 4 cm (1 5/8 ins).



Right side faces in on a double layer of fabric; right side faces up on a single layer. Lay the asymmetric pieces 1, 2 and 3 on the right side of the fabric, with their printed sides facing up.

Cutting Out

Matelassé:

- 1 centre front 1x
- 2 right side front 1x
- pocket piece 4x
- 3 left side front 1x
- 4 back, on a fold 1x
- 5 front neck facing, on a fold 1x
- 6 back neck facing, on a fold 1x

Interfacing: Iron to wrong side of facing pieces.

Sewing

Stitch side fronts to centre front. Press seam allowances toward centre front.

Stitch shoulder seams on tunic and on facing, beginning and ending stitching exactly on marked neck edge. Press seam allowances open.

Stitch facing right sides together with neck edge. Trim seam allowances. Turn facing up and stitch to seam allowances, close to seam. Turn facing to inside and sew to shoulder seams.

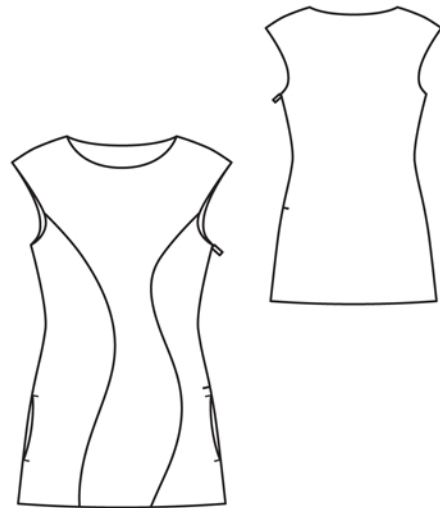
Armholes: Fold bias tape lengthwise and press. Work from right side to pin folded bias tape to each armhole edge so that fold edge of tape lies on garment piece, 1 cm (3/8 in) past seam line. Stitch. Trim seam allowances. Turn bias tape over seam allowances into armhole and stitch to seam allowances, close to seam. Turn bias tape to inside and press edges.

Stitch right side seam, at armhole turning bias tape up again. Do not stitch across pocket openings, between seam marks. Turn bias tape to inside again and sew in place by hand.

At left armhole, turn bias tape up again. Sew invisible zip to left slit edges, see the "Helpful Hint" on next page. Stitch left side seam below zip, not stitching across pocket opening. Turn bias tape and upper ends of zip tapes to inside. Sew zip tapes in place by hand.

Inseam pockets: Work from inside to stitch pocket pieces to seam allowances of pocket opening edges, right sides together. Stitch pocket pieces in place, close to side seam and along seam line on pocket opening edges. Press pocket pieces forward and stitch together. Stitch thread bars, approx. 1 cm (3/8 in) long, across pocket opening ends.

Press hem allowance to inside and sew in place by hand.





These special zippers come in various lengths. The zipper should be at least 2 cm (3/4 in) longer than the slit. It is sewn in place before the seam below the slit is stitched. A special presser foot is required to sew the zipper in place.

Sewing the zipper in place:

Open the zipper and push the coil back with your thumbnail to reveal the seam marking between the tape and the coil. Place the open zipper right side down on the right fabric side of one slit edge.

In order to stitch the zipper in place exactly along the marked seam line, you must first calculate the distance between the tape edge and the fabric edge as follows: width of seam allowance minus 1 cm (3/8 in) tape width = distance from edge of fabric. This will yield a value of 5 mm (3/16 in) if the width of the seam allowance is 1.5 cm (5/8 in).

Pin the top end of the zipper tape in place, the calculated distance from the edge of the fabric. The bottom end of the zipper will extend past the marked end of the slit. Place the presser foot on the zipper so that the coil is in the notch to the right of the needle (1). Stitch zipper in place, from the top to the marked end of the slit. Close zipper.

Place the other zipper tape face down on the opposite slit edge and pin in place at the top. Open zipper again. Place the presser foot on the top end of the zipper so that the coil is in the notch to the left of the needle (2). Sew the zipper in place, from the top to the end of the slit. Close zipper.

Now stitch the seam below the zipper, from bottom to top. Turn the loose lower end of the zipper out of the way, over the seam allowance. Stitch as close as possible to the last stitches of the zipper seams. Trim away excess zipper and bind the end with a scrap of fabric.

Additional Information:

Burda patterns do not include seam and hem allowances. We recommend adding 1-2 cm (3/8 - 3/4 inch) for seams and 2-5 cm (3/4 - 2 inch/es) for hems. Refer to your specific pattern instructions for exact measurements.

The fabric requirements are based on the fabric used for the original designs. These amounts will change if you use fabric of a different width. The pattern of the fabric determines whether all the pieces must be cut in the same direction or whether some can be reversed to save fabric.

The cutting layout printed with the instructions shows the best way to place the pattern pieces on our original fabric. Fold the fabric double with the right side facing in. The fabric then has a fold edge and a selvedge edge. When cutting from a single fabric layer, the right side should face up.

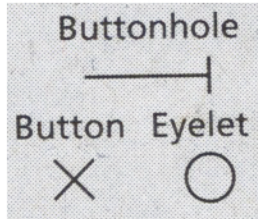
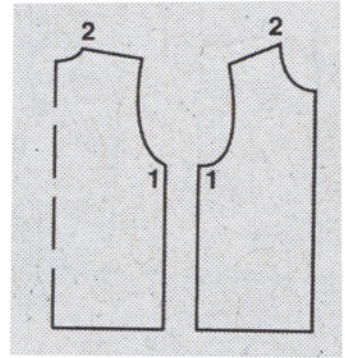
Pattern pieces which are shown in the cutting layout with broken outlines should be pinned to the fabric with their printed side facing down.

Grey shaded areas in the cutting layout indicate which pieces are to be interfaced.

Transfer the pattern piece lines to the wrong side of your fabric with burda dressmaker's carbon paper. Hand-baste along lines (e.g. for pockets or centre front) to make them visible on the right side of the fabric.

Key Symbols:

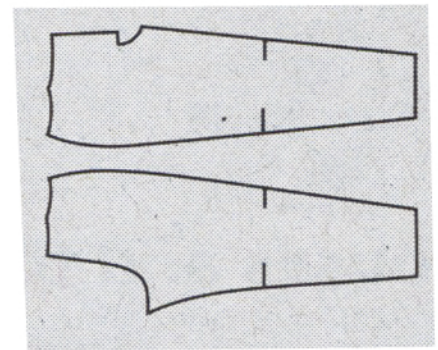
Seam numbers
show where pattern pieces must be sewn together. Match pieces with the same numbers.



Seam marks
on long seams. Match the small symbols to one another.



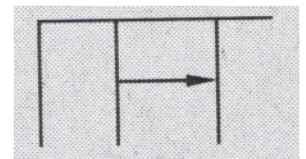
Presser foot
is the symbol for seam and top-stitching lines.



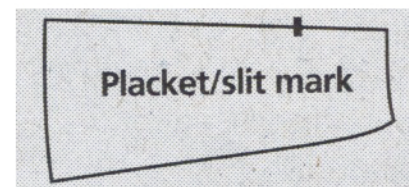
Scissors
indicate edges to be cut without seam allowances and also slash lines, e.g. pocket openings.



Pleat symbol
Fold pleat in direction of arrow.



Placket/slit mark
Indicates beginning/end of placket/slit.



Gather
Ease
Stretch

