

108B Trousers

Burda sizes 34, 36, 38, 40, 42, 44

Side length 96 cm (37 3/4 ins)

Upper edge of trousers 1 cm (3/8 in) below waist at centre back and 4.5 cm (1 7/8 ins) below waist at centre front

Hem circumference 42 cm (16 1/2 ins)

Materials

Matelassé,
width: 140 cm (55 ins)
length: 1.40 – 1.40 – 1.40 – 1.40 – 1.45 – 1.85 m
(1 5/8 – 1 5/8 – 1 5/8 – 1 5/8 – 1 3/4 – 2 1/8 yds).

Interfacing.

1 invisible zip, 22 cm (9 ins) long.

Recommended fabrics: Trousers fabrics with some body.

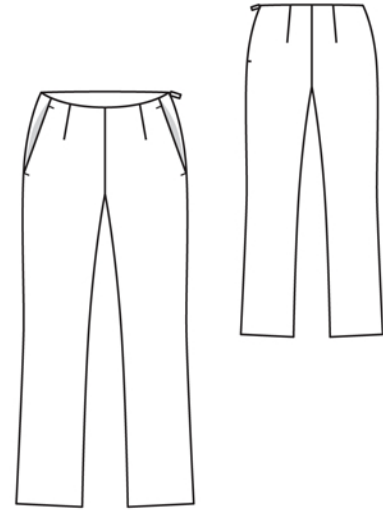
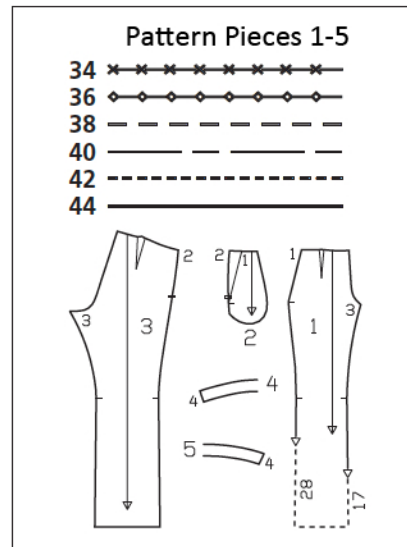
Preparations

Print the pattern out on letter or A4 sized paper. It is **very important** to not scale the document. Your pattern will print on multiple pages, which you will then tile together. Arrange the sheets on a large, hard and flat surface matching up the numbers and letters (i.e. 6A to 6A). Cut or fold one of the sides and match the edge to its corresponding side. Then, tape down in place so paper is secure.

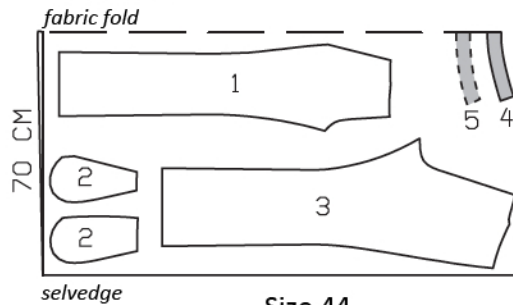
Trace the pattern pieces from the pattern sheet following the lines and markings for style 108B and your size. Trace pocket piece from piece 2, up to the abutting line.

burda style magazine patterns do not have seam allowance included.

Seam and hem allowance to be added:
Seams and edges 1.5 cm (5/8 in), hem 4 cm (1 5/8 ins).

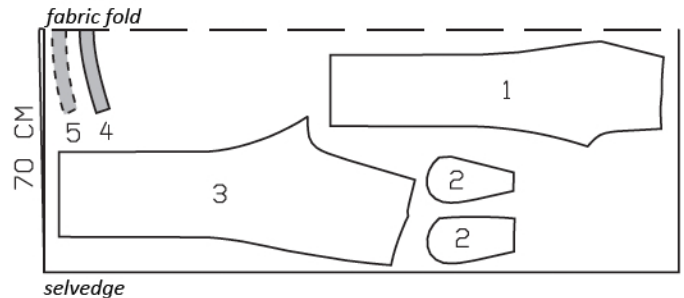


Sizes 34-42



Cut from a double layer of fabric, right side facing in.

Size 44



Cutting Out

- 1 front trouser piece 2x
- 2 side hip yoke with integrated pocket piece 2x
- pocket piece 2x
- 3 back trouser piece 2x
- 4 front facing, on a fold 1x
- 5 back facing, on a fold 1x

Interfacing: Iron to facing pieces.

Sewing

Stitch darts in front and back trouser pieces.
Press darts toward centre.

Hip yoke pockets: Stitch pocket pieces right sides together with pocket opening edges of front trouser pieces. Turn pocket pieces up and stitch to seam allowances, close to seam. Turn pocket pieces to inside. Pin pocket opening edges to side hip yokes, at abutting lines. Stitch edges of pocket pieces together. Baste pocket pieces to wrong side of front trouser pieces. Stitch bars of zigzag stitching, approx. 1 cm (3/8 in) long, at pocket opening edges, approx. 1 cm (3/8 in) below upper trousers edge, and at bottoms of pocket openings.

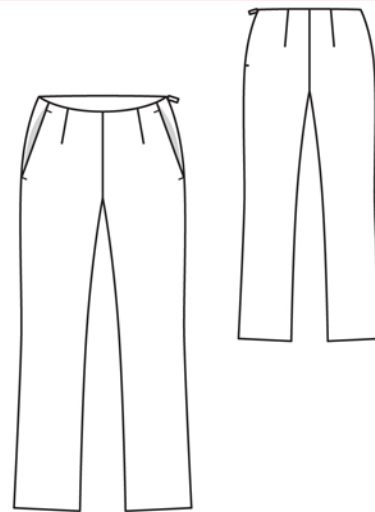
Stitch right side seam and inside leg seams.
Press seam allowances open.

Sew invisible zip to left slit edges, see the “Helpful Hint” on next page. Stitch left side seam below zip.

Pull one trouser leg into the other, with right sides facing. Stitch centre front and back seam as continuous seam. Press seam allowances open from upper edges to beginnings of crotch curve. Do not press allowances flat along curve.

Upper trousers edge: On facing, stitch right side seam as mirror image of trousers seam. Pin facing right sides together with upper trousers edge. At zip slit, turn facing ends back, approx. 5 mm (3/16 in) before edge of slit, and pin to upper edge. Turn allowances on slit edges of trousers to outside and pin to upper edge, over facing. Stitch along upper trousers edge. Turn allowances on slit edges to inside. Turn facing up and stitch to seam allowances, as far as possible, close to seam. Turn facing to inside and sew to zip tapes, to seams, and to darts.

Press hem allowances to inside and sew in place by hand.





These special zippers come in various lengths. The zipper should be at least 2 cm (3/4 in) longer than the slit. It is sewn in place before the seam below the slit is stitched. A special presser foot is required to sew the zipper in place.

Sewing the zipper in place:

Open the zipper and push the coil back with your thumbnail to reveal the seam marking between the tape and the coil. Place the open zipper right side down on the right fabric side of one slit edge.

In order to stitch the zipper in place exactly along the marked seam line, you must first calculate the distance between the tape edge and the fabric edge as follows: width of seam allowance minus 1 cm (3/8 in) tape width = distance from edge of fabric. This will yield a value of 5 mm (3/16 in) if the width of the seam allowance is 1.5 cm (5/8 in).

Pin the top end of the zipper tape in place, the calculated distance from the edge of the fabric. The bottom end of the zipper will extend past the marked end of the slit. Place the presser foot on the zipper so that the coil is in the notch to the right of the needle (1). Stitch zipper in place, from the top to the marked end of the slit. Close zipper.

Place the other zipper tape face down on the opposite slit edge and pin in place at the top. Open zipper again. Place the presser foot on the top end of the zipper so that the coil is in the notch to the left of the needle (2). Sew the zipper in place, from the top to the end of the slit. Close zipper.

Now stitch the seam below the zipper, from bottom to top. Turn the loose lower end of the zipper out of the way, over the seam allowance. Stitch as close as possible to the last stitches of the zipper seams. Trim away excess zipper and bind the end with a scrap of fabric.

Additional Information:

Burda patterns do not include seam and hem allowances. We recommend adding 1-2 cm (3/8 - 3/4 inch) for seams and 2-5 cm (3/4 - 2 inch/es) for hems. Refer to your specific pattern instructions for exact measurements.

The fabric requirements are based on the fabric used for the original designs. These amounts will change if you use fabric of a different width. The pattern of the fabric determines whether all the pieces must be cut in the same direction or whether some can be reversed to save fabric.

The cutting layout printed with the instructions shows the best way to place the pattern pieces on our original fabric. Fold the fabric double with the right side facing in. The fabric then has a fold edge and a selvedge edge. When cutting from a single fabric layer, the right side should face up.

Pattern pieces which are shown in the cutting layout with broken outlines should be pinned to the fabric with their printed side facing down.

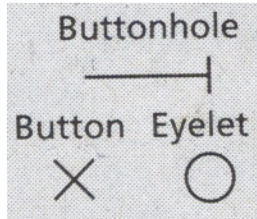
Grey shaded areas in the cutting layout indicate which pieces are to be interfaced.

Transfer the pattern piece lines to the wrong side of your fabric with burda dressmaker's carbon paper. Hand-baste along lines (e.g. for pockets or centre front) to make them visible on the right side of the fabric.

Key Symbols:

Seam numbers

show where pattern pieces must be sewn together. Match pieces with the same numbers.

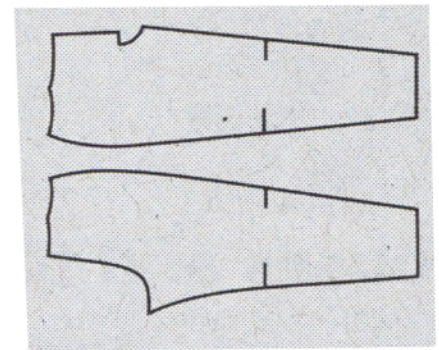


Seam marks

on long seams. Match the small symbols to one another.



Presser foot is the symbol for seam and top-stitching lines.



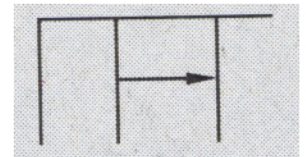
Scissors

indicate edges to be cut with-out seam allowances and alsoslash lines, e. g. pocket openings.



Pleat symbol

Fold pleat in direction of arrow.



Placket/slit mark

Indicates beginning/ end of placket/slit.



Gather
Ease
Stretch

