

101C Dress

Burda sizes 36, 38, 40, 42, 44

Length from waist: 60 cm (23 3/4 ins)

Materials

Cotton twill,
width: 150 cm (59 ins)
length: 1.35 – 1.35 – 1.40 – 1.45 – 1.45 m
(1 5/8 – 1 5/8 – 1 5/8 – 1 3/4 – 1 3/4 yds).

Interfacing.

2 metal zips, 15 cm (6 ins) long.

Recommended fabrics: Dress fabrics with some body.

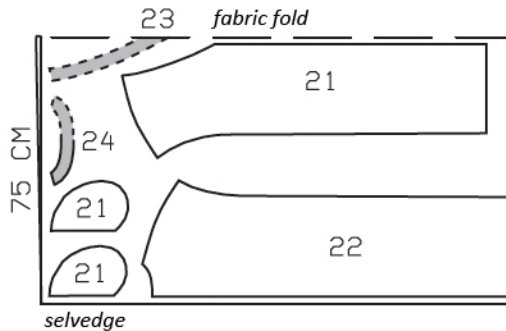
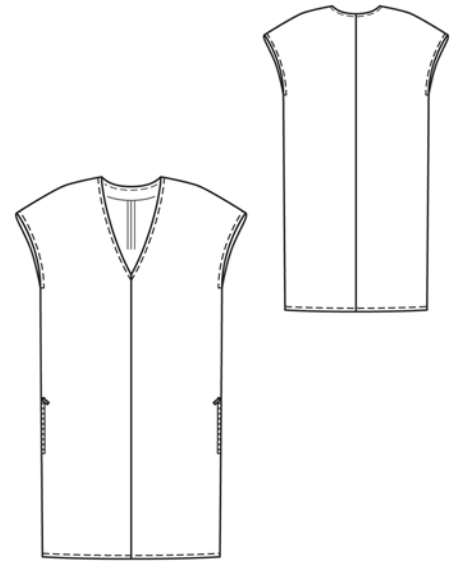
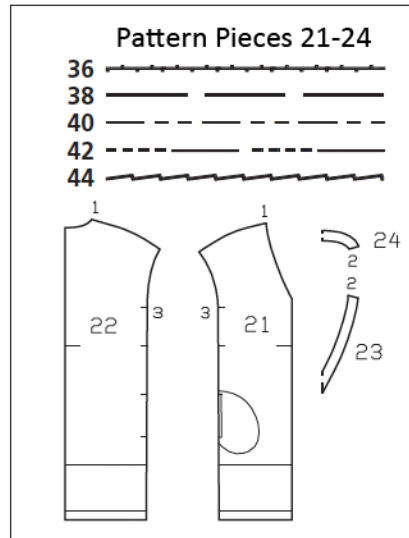
Preparations

Print the pattern out on letter or A4 sized paper. It is **very important** to not scale the document. Your pattern will print on multiple pages, which you will then tile together. Arrange the sheets on a large, hard and flat surface matching up the numbers and letters (i.e. 6A to 6A). Cut or fold one of the sides and match the edge to its corresponding side. Then, tape down in place so paper is secure.

Trace the pattern pieces from the pattern sheet following the lines and markings for style 101C and your size. Trace the pocket piece from piece 21 as a separate pattern piece – it is the same for all sizes. The pocket lines on piece 21 are marked in full for size 36 only. For the other sizes, complete the pocket lines accordingly.

burda style magazine patterns do not have seam allowance included.

Seam and hem allowance to be added:
Seams and edges 1.5 cm (5/8 in). Cut view C without hem allowances.



Cut from a double layer of fabric, right side facing in.

Cutting Out

- 21 front 2x
- pocket piece 4x
- 22 back 2x
- 23 front neck facing, on a fold 1x
- 24 back neck facing, on a fold 1x

Interfacing: See shaded area on pattern layout. Also iron strips of interfacing, approx. 3 cm (1 1/4 ins) wide, to wrong side of fabric, over pocket markings.

Sewing

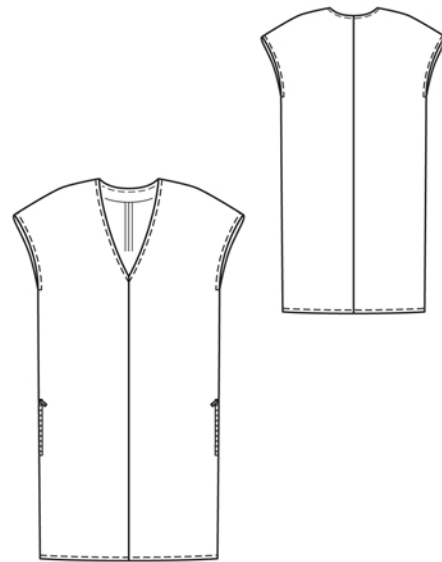
On front pieces, stitch centre seam, beginning stitching on upper edge, exactly at marked neck edge. Stitch centre back seam. Stitch shoulder seams on dress and on neck facing. Press seam allowances open.

Neck edge: Stitch neck facing right sides together with neck edge. Trim seam allowances. At centre front, clip allowances close to seam. Turn facing up and stitch to seam allowances, close to seam. Turn facing to inside. Press edge. Sew inside facing edge to seams.

Zip pockets and side seams: Pin one pocket piece to each front, over lines marked for zip, right sides facing. Work from wrong side to stitch along marked lines. Trim seam allowances and clip diagonally into corners. Turn pocket pieces to inside. Press edges. Pin zips under seamed pocket opening edges so that zip teeth are visible and so that second zip tape extends, as seam allowance. Edgestitch zips in place. Lay each second pocket piece underneath and baste to extending zip tape. Stitch inside edges of pocket pieces together. Stitch side seams below marking (seam number 3). At each pocket, stitch back piece to zip tape and to pocket. Press side seam allowances open, above and below pockets, clipping seam allowances of front at pocket piece edges to do so. Topstitch back close to pocket opening edges.

Press allowances on armhole edges to inside, turn raw edges under, and sew in place by hand.

Topstitch close to each side of centre seams. Use a zigzag stitch, approx. 7 mm (1/4 in) wide, to topstitch close to lower dress edge and armhole edges. Topstitch close to neck edge and again 7 mm (1/4 in) from neck edge.



Additional Information:

Burda patterns do not include seam and hem allowances. We recommend adding 1-2 cm (3/8 - 3/4 inch) for seams and 2-5 cm (3/4 - 2 inch/es) for hems. Refer to your specific pattern instructions for exact measurements.

The fabric requirements are based on the fabric used for the original designs. These amounts will change if you use fabric of a different width. The pattern of the fabric determines whether all the pieces must be cut in the same direction or whether some can be reversed to save fabric.

The cutting layout printed with the instructions shows the best way to place the pattern pieces on our original fabric. Fold the fabric double with the right side facing in. The fabric then has a fold edge and a selvedge edge. When cutting from a single fabric layer, the right side should face up.

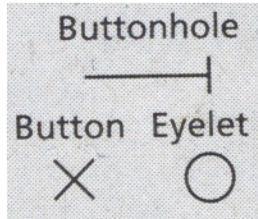
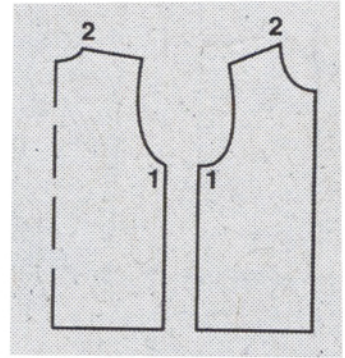
Pattern pieces which are shown in the cutting layout with broken outlines should be pinned to the fabric with their printed side facing down.

Grey shaded areas in the cutting layout indicate which pieces are to be interfaced.

Transfer the pattern piece lines to the wrong side of your fabric with burda dressmaker's carbon paper. Hand-baste along lines (e.g. for pockets or centre front) to make them visible on the right side of the fabric.

Key Symbols:

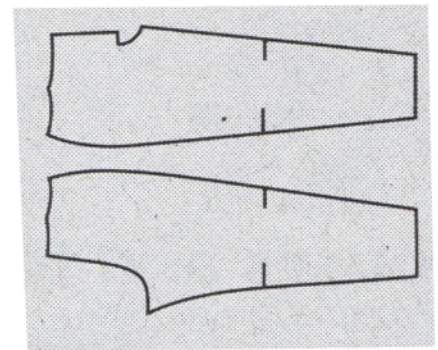
Seam numbers
show where pattern pieces must be sewn together. Match pieces with the same numbers.



Seam marks
on long seams. Match the small symbols to one another.



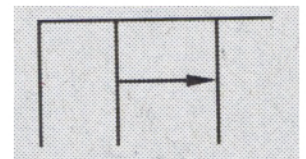
Presser foot
is the symbol for seam and top-stitching lines.



Scissors
indicate edges to be cut without seam allowances and also slash lines, e.g. pocket openings.



Pleat symbol
Fold pleat in direction of arrow.



Placket/slit mark
Indicates beginning/end of placket/slit.

