

112B Dress

Burda sizes **72, 76, 80, 84, 88**

Length from waist 60 cm (23 3/4 ins)

Sleeves approx. 22 cm (9 ins) longer than normal

Materials

Stretch jersey,
width: 160 cm (63 ins)
length: 3.20 m (3 1/2 yds).

Vilene Bias Tape/stay tape.

A twin sewing machine needle.

Recommended fabrics: Stretch jersey. Use stretch fabrics only.

Preparations

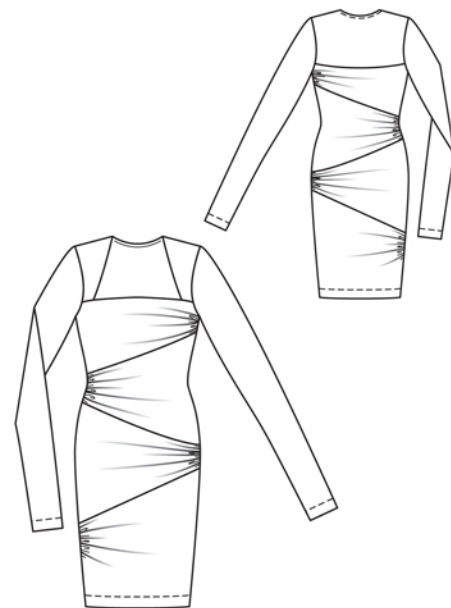
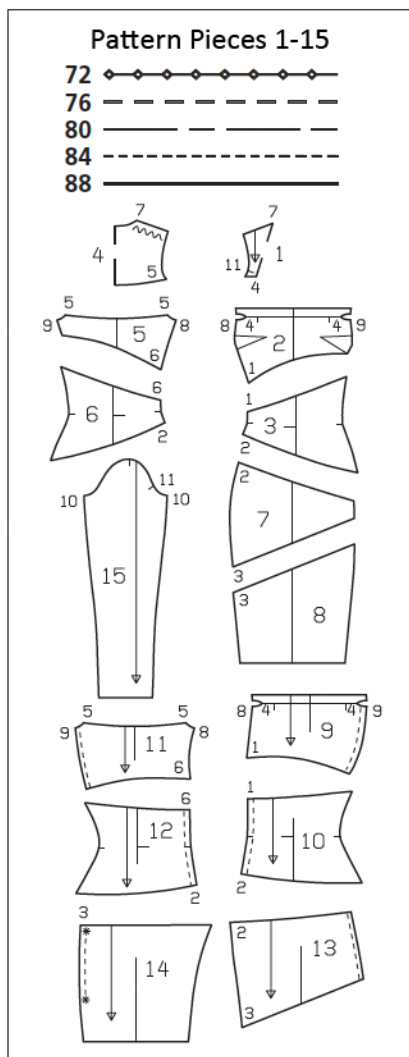
Print the pattern out on letter or A4 sized paper. It is **very important** to not scale the document. Your pattern will print on multiple pages, which you will then tile together. Arrange the sheets on a large, hard and flat surface matching up the numbers and letters (i.e. 6A to 6A). Cut or fold one of the sides and match the edge to it's corresponding side. Then, tape down in place so paper is secure.

Trace the pattern pieces from the pattern sheet following the lines and markings for style 112B and your size.

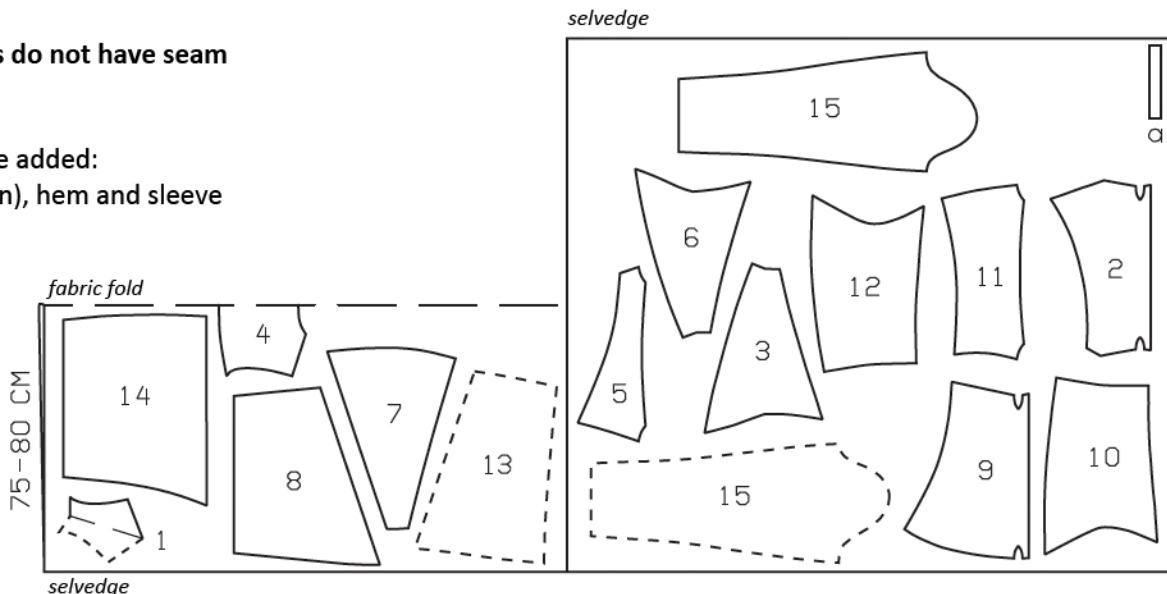
burda style magazine patterns do not have seam allowance included.

Seam and hem allowance to be added:

Seams and edges 1.5 cm (5/8 in), hem and sleeve hems 4 cm (1 5/8 ins).



Fold the fabric as shown in the pattern layout. Right side faces in on a double layer of fabric; right side faces up on a single layer. Cut the asymmetric pieces 2, 3, 5, 6, 9, 10, 11, and 12 from a single layer of fabric, right side facing up. Cut right and left sleeves as opposites.



Cutting Out

- 1 front yoke, on a fold 2x
- 2 upper front 1x
- 3 lower front 1x
- 4 upper back, on a fold 1x
- 5 middle back 1x
- 6 lower back 1x
- 7 upper skirt panel 2x
- 8 lower skirt panel 2x
- 9 draping piece for upper front 1x
- 10 draping piece for lower front 1x
- 11 draping piece for middle back 1x
- 12 draping piece for lower back 1x
- 13 draping piece
for upper skirt panel 2x
- 14 draping piece
for lower skirt panel 2x
- 15 sleeve 2x

Draft the following piece NOT included in the pattern:

- a) facing strip for back neck edge, 19 – 19 – 20 – 20 – 21 cm (7 1/2 – 7 1/2 – 8 – 8 – 8 3/8 ins) long, 4 cm (1 5/8 ins) wide (incl. allowances).

Important: The paper pattern pieces for the asymmetric skirt panels 7 and 8 and the corresponding draping pieces 13 and 14 are for the front pieces. These paper pattern pieces must be turned over (i.e. face down) to cut the back pieces. Cutting from a double layer of fabric, will automatically give you both pieces.

Vilene Bias Tape/stay tape: Iron to wrong side of armhole edges and back neck edge. Iron the Bias Tape/stay tape to the neck edge of the front yoke and upper front so that the line of chain stitch lies on the inside half of the yoke, next to the marked fabric fold line, and on the facing of upper front, next to the facing fold line. If you are working with a delicate fabric, also interface the outer yoke halves with Vilene/Pellon.

Sewing

Note: Stitch seams on stretch fabrics with a special stretch stitch or at a narrow zigzag setting. Stitch hems with a twin sewing machine needle to keep them elastic.

Stitch bust darts. Press darts up.

On draping piece for upper front, gather left side edge to 5.5 cm (2 1/4 ins). Lay draping piece on upper front, with wrong side facing right side. On side and lower edges, stitch seam allowances together, next to seam line. On upper edge, stitch self-facings together on inside edge and next to fold line.

On draping piece for lower front, gather right side edge to 8 cm (3 1/4 ins). Lay draping piece on lower front, with wrong side facing right side, and stitch seam allowances together next to seam line.

On draping piece for upper front skirt panel, gather left side edge to 6 cm (2 3/8 ins). On draping piece for lower front skirt panel, gather right side edge between asterisks to 8 cm (3 1/4 ins). Lay draping pieces on corresponding front skirt panel pieces and stitch seam allowances together.

Stitch upper front to lower front (seam number 1). Stitch upper front skirt panel to lower front skirt panel (seam number 3). Stitch front to front skirt panel (seam number 2). Press seam allowances open.

Fold front yokes on fabric fold lines, wrong side facing in, and press. Baste open yoke edges together. Stitch lower yoke edges to upper front edge, along facing fold line, from seam number 4 – yokes point down. Stitch seam allowances of yoke joining seams to facing. Turn yokes up, turn facing down, and press. Baste side facing edges in place.

Gather back draping pieces and stitch to corresponding back pieces. Stitch upper back to middle back (seam number 5). Press seam allowances up. Stitch middle back to lower back (seam number 6). Press seam allowances open. Stitch back skirt panel pieces together (seam number 3). Stitch back to back skirt panel (seam number 2). Press seam allowances open.

Stitch side seams. Stitch shoulder seams – allowances of back extend at neck edge. Press shoulder seam allowances onto back.

Fold facing strip for back neck edge lengthwise, right side facing out, and press. Pin folded facing strip to back neck edge so that fold edge of strip lies on garment piece, 1 cm (3/8 in) past seam line. Stitch along seam line. Turn facing strip up and turn ends under. Turn facing strip to inside and press edge. Topstitch 7 mm (1/4 in) from back neck edge.

Stitch sleeve seams. Press sleeve hem allowances to inside. Work from right side of sleeves and use twin needle to stitch hems 3.5 cm (1 1/2 ins) from lower sleeve edges.

Set in sleeves.

Additional Information:

Burda patterns do not include seam and hem allowances. We recommend adding 1-2 cm (3/8 - 3/4 inch) for seams and 2-5 cm (3/4 - 2 inch/es) for hems. Refer to your specific pattern instructions for exact measurements.

The fabric requirements are based on the fabric used for the original designs. These amounts will change if you use fabric of a different width. The pattern of the fabric determines whether all the pieces must be cut in the same direction or whether some can be reversed to save fabric.

The cutting layout printed with the instructions shows the best way to place the pattern pieces on our original fabric. Fold the fabric double with the right side facing in. The fabric then has a fold edge and a selvedge edge. When cutting from a single fabric layer, the right side should face up.

Pattern pieces which are shown in the cutting layout with broken outlines should be pinned to the fabric with their printed side facing down.

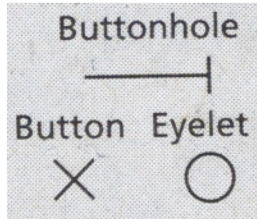
Grey shaded areas in the cutting layout indicate which pieces are to be interfaced.

Transfer the pattern piece lines to the wrong side of your fabric with burda dressmaker's carbon paper. Hand-baste along lines (e.g. for pockets or centre front) to make them visible on the right side of the fabric.

Key Symbols:

Seam numbers

show where pattern pieces must be sewn together. Match pieces with the same numbers.



Seam marks

on long seams. Match the small symbols to one another.



Presser foot is the symbol for seam and top-stitching lines.



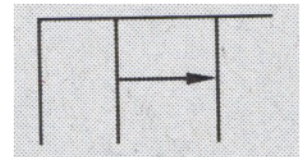
Scissors

indicate edges to be cut with-out seam allowances and alsoslash lines, e. g. pocket openings.



Pleat symbol

Fold pleat in direction of arrow.



Placket/slit mark

Indicates beginning/ end of placket/slit.



Gather
Ease
Stretch

